

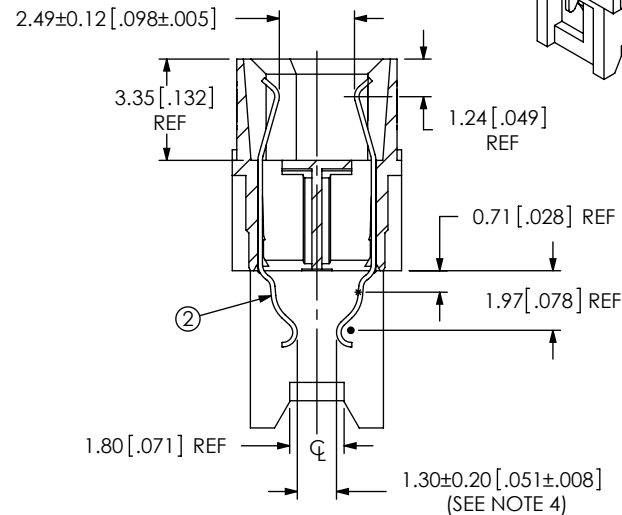
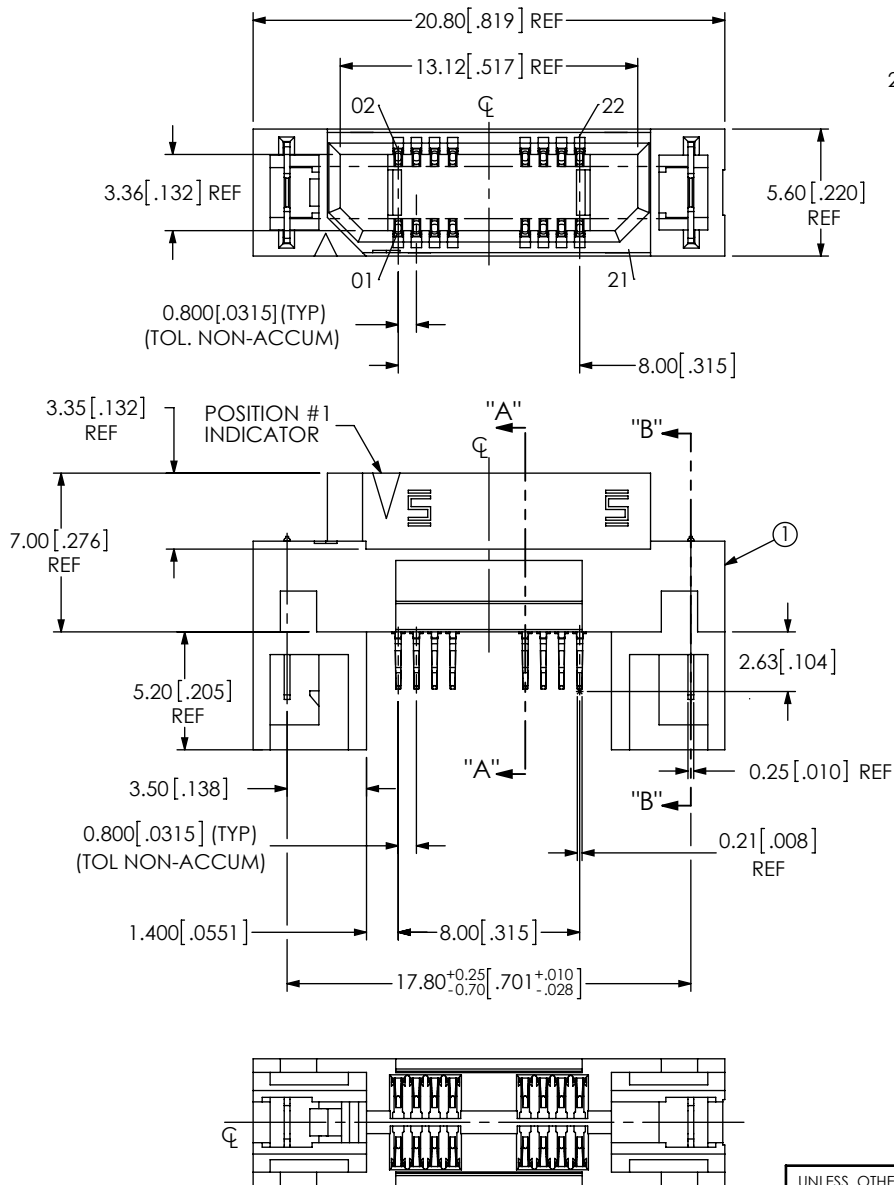
REVISION A

DO NOT
SCALE FROM
THIS PRINT

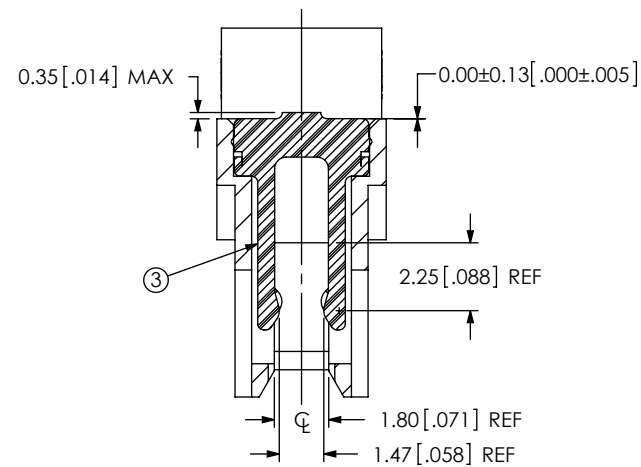
NOTES:

1. 11 POSITIONS NOT OFFERED AS STANDARD.
2. REPRESENTS A CRITICAL DIMENSION.
3. MINIMUM PUSHOUT FORCE: 2.22N[.5 LB].
4. TO BE MEASURED USING GAGE PINS.
5. PARTS TO BE PACKAGED IN TAPE & REEL.

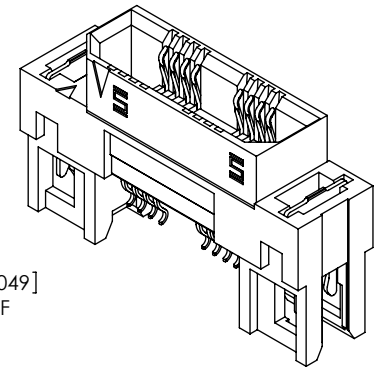
**DESIGNED & DIMENSIONED
IN MILLIMETERS[INCHES]**



SECTION "A"-"A"



SECTION "B"- "B"



ITEM NO.	PART NUMBER	QUANTITY	MATERIAL
1	ERF8-011-D-EM2	1.0000	VECTRA E130i, COLOR: BLACK
2	C-221-01-S	22.000	BeCu, ALLOY 390 HT
3	WT-17-01-T	2.0000	PHOS BRONZE, 510 SPRING TEMPER
4	CT-ASP4039MS	.00444	CONDUCTIVE POLYMER

UNLESS OTHERWISE SPECIFIED,
DIMENSIONS ARE IN MILLIMETERS.
TOLERANCES ARE:

DECIMALS	ANGLES
X.X: ± 0.3 [.01]	2°
X.XX: ± 0.13 [.005]	
X.XXX: ± 0.051 [.0020]	

PROPRIETARY NOTE

THIS DOCUMENT CONTAINS INFORMATION
CONFIDENTIAL AND PROPRIETARY TO
SAMTEC, INC. AND SHALL NOT BE REPRODUCED
OR TRANSFERRED TO OTHER DOCUMENTS OR
DISCLOSED TO OTHERS OR USED FOR ANY
PURPOSE OTHER THAN THAT WHICH IT WAS
OBTAINED WITHOUT THE EXPRESSED WRITTEN
CONSENT OF SAMTEC, INC.

DO NOT SCALE DRAWING

SHEET SCALE: 3:1

PLATING:
CONTACT AREA: .000030 GOLD OVER .000050 NICKEL
REMAINDER: .000200 REF TIN OVER .000050 NICKEL



520 PARK EAST BLVD, NEW ALBANY, IN 47150
PHONE: 812-944-6733 FAX: 812-948-5047
e-Mail info@SAMTEC.com code 55322

DESCRIPTION:

MODIFIED ERF8 ASSEMBLY

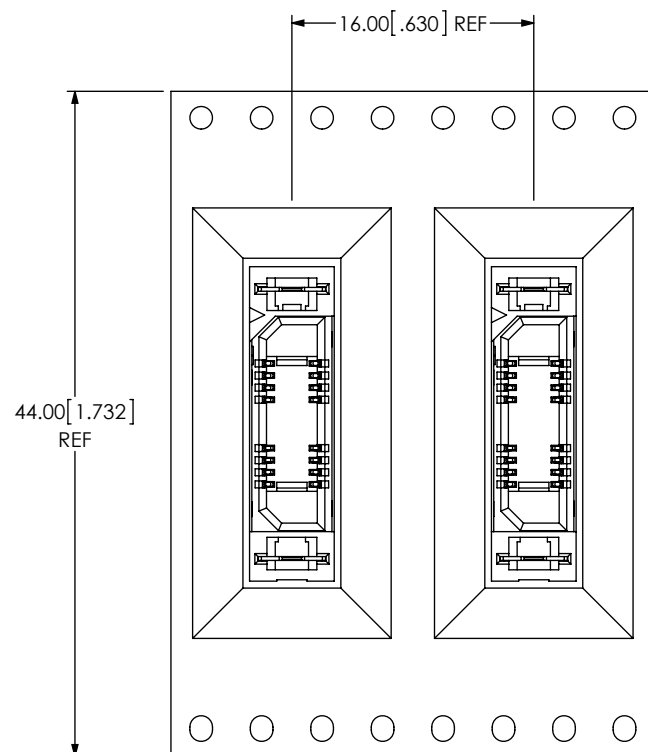
DWG. NO.

ASP-177706-01

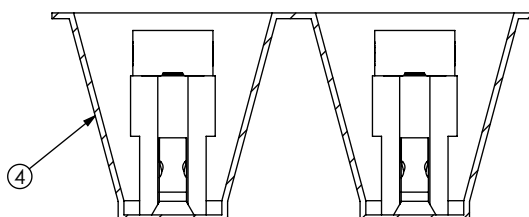
BY: JERRY SU

09/16/2013 | SHEET 1 OF 2

c:\enterprisevault\DWG\MISC\MKTG\ASP-177706-01-MKT.SLDDRW



USER DIRECTION OF UN-REELING
POCKET NOT DETAILED →



PACKAGING VIEW

PROPRIETARY NOTE

THIS DOCUMENT CONTAINS INFORMATION
CONFIDENTIAL AND PROPRIETARY TO
SAMTEC, INC. AND SHALL NOT BE REPRODUCED
OR TRANSFERRED TO OTHER DOCUMENTS OR
DISCLOSED TO OTHERS OR USED FOR ANY
PURPOSE OTHER THAN THAT WHICH IT WAS
OBTAINED WITHOUT THE EXPRESSED WRITTEN
CONSENT OF SAMTEC, INC.

samtec

520 PARK EAST BLVD., NEW ALBANY, IN 47150
PHONE: 812-944-6733 FAX: 812-948-5047
e-Mail: info@SAMTEC.com code 55322

SHEET SCALE: 2:1

DESCRIPTION:
MODIFIED ERF8 ASSEMBLY

DWG. NO.
ASP-177706-01

BY: JERRY SU 09/16/2013 SHEET 2 OF 2

Mouser Electronics

Authorized Distributor

Click to View Pricing, Inventory, Delivery & Lifecycle Information:

[Samtec:](#)

[ASP-177706-01](#)