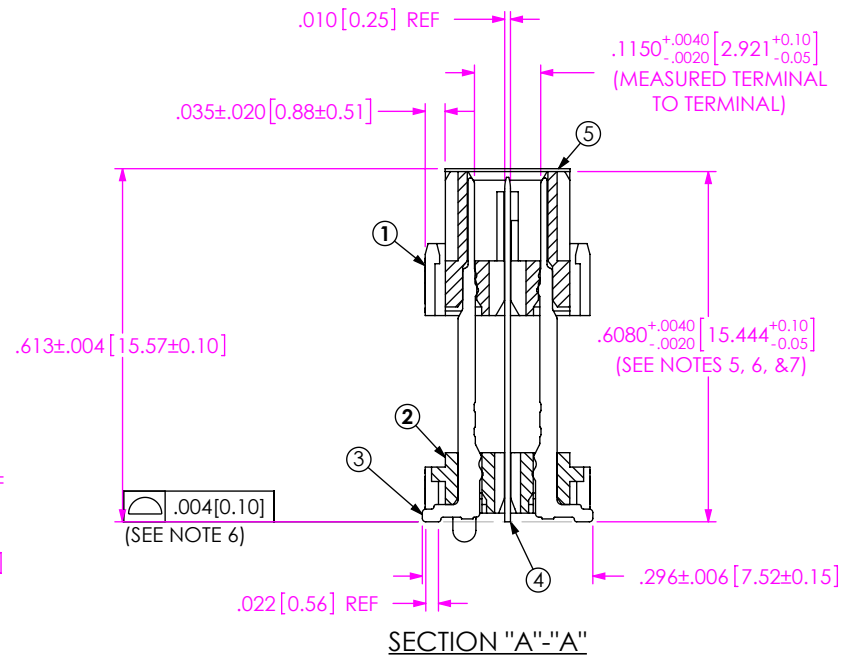
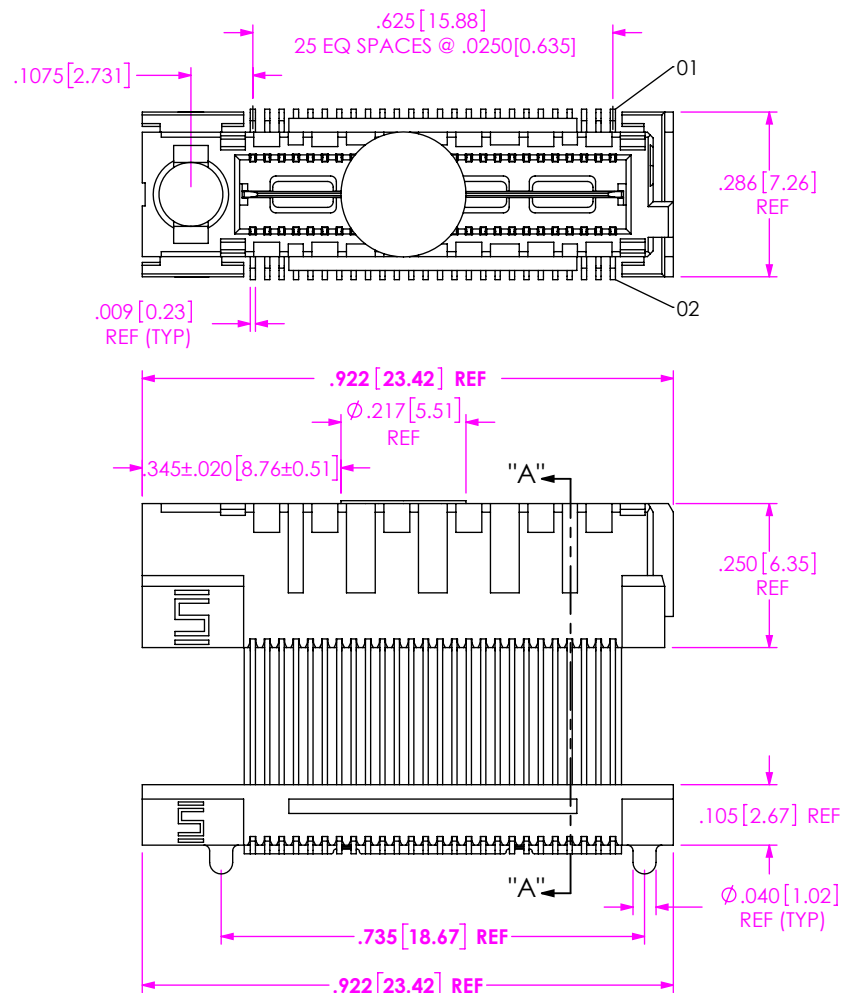


DO NOT  
SCALE FROM  
THIS PRINT

## NOTES:

1. ITEMS 1 & 2, STACKER HEIGHT NOT AVAILABLE AS STANDARD.
2. REPRESENTS A CRITICAL DIMENSION.
3. MAXIMUM BURR ALLOWANCE: .0015[0.038]
4. MINIMUM PUSHOUT FORCE: SIGNAL: .5 LB, GROUND: 1 LB
5. MAXIMUM VARIANCE OF .002[0.05].
6. DIMENSION APPLIES TO CONTACTS & GROUND PLANES.
7. GROUND PLANE PRESS HEIGHT MUST BE .003[0.08] LESS THAN THE MAXIMUM HEIGHT OR .001[0.03] GREATER THAN THE MINIMUM HEIGHT OF THE TERMINAL.
8. FOR QUANTITIES UP TO 49 PIECES, NO LEADER, TRAILER, OR EIA-481-D REEL WILL BE SUPPLIED.
9. FOR QUANTITIES OF 50-100 PIECES, NO LEADER, TRAILER WILL BE SUPPLIED.
10. PARTS TO BE TRAY PACKAGED ONLY FOR VISION PROCESS.
11. FOR ALL PREVIOUS MANUFACTURING STEPS PARTS ARE TO BE PACKAGED IN LAYERS
12. PARTS TO BE PACKAGED IN TAPE & REEL.



UNLESS OTHERWISE SPECIFIED,  
DIMENSIONS ARE IN INCHES.

TOLERANCES ARE:

DECIMALS

ANGLES

.XX: ±.01[0.3]

2°

.XXX: ±.005[0.13]

.XXXX: ±.0020[0.051]

PROPRIETARY NOTE

THIS DOCUMENT CONTAINS CONFIDENTIAL AND PROPRIETARY INFORMATION AND ALL DESIGN, MANUFACTURING, REPRODUCTION, USE, PATENT RIGHTS AND SALES RIGHTS ARE EXPRESSLY RESERVED BY SAMTEC, INC. THIS DOCUMENT SHALL NOT BE DISCLOSED, IN WHOLE OR PART, TO ANY UNAUTHORIZED PERSON OR ENTITY NOR REPRODUCED, TRANSFERRED OR INCORPORATED IN ANY OTHER PROJECT IN ANY MANNER WITHOUT THE EXPRESS WRITTEN CONSENT OF SAMTEC, INC.

PLATING:

CONTACTS:

CONTACT AREA: .000030 GOLD OVER .000050 NICKEL

REMAINDER: .000200 REF TIN OVER .000050 NICKEL

GROUND PLANE:

CONTACT AREA: .000010 GOLD OVER .000050 NICKEL

REMAINDER: .000200 REF TIN OVER .000050 NICKEL

DO NOT SCALE DRAWING

SHEET SCALE: 3:1

DESCRIPTION:

MODIFIED ELEVATED QMS ASM

DWG. NO.

ASP-142781-07

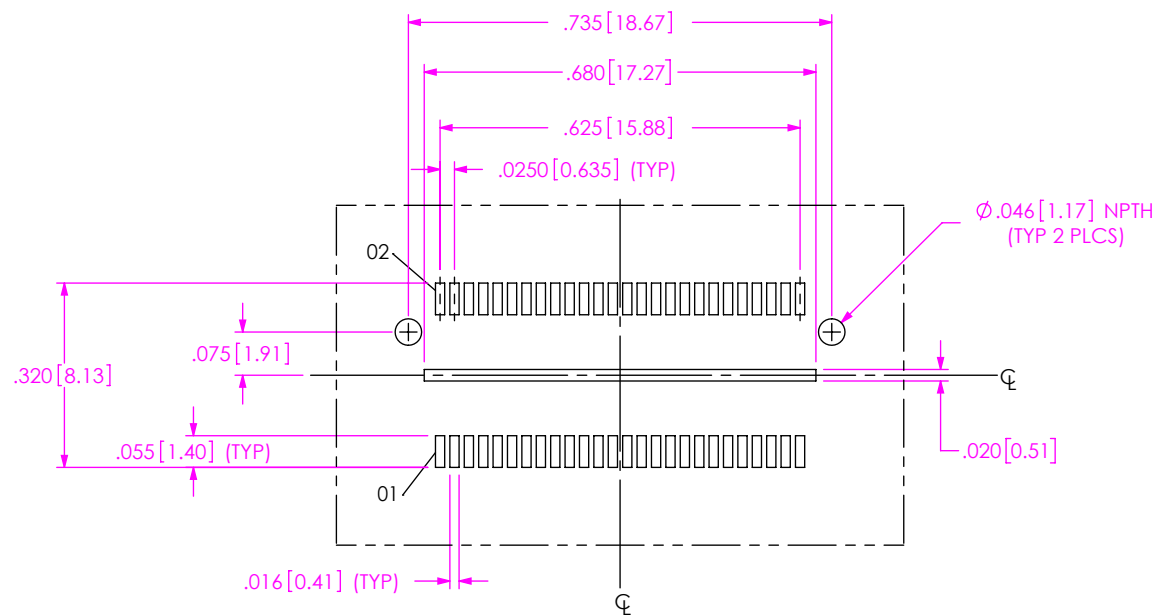
BY: J. BROWNING 06/26/2014 SHEET 1 OF 2

F:\DWG\MISC\MKTG\ASP-142781-07-MKT.SLDDRW

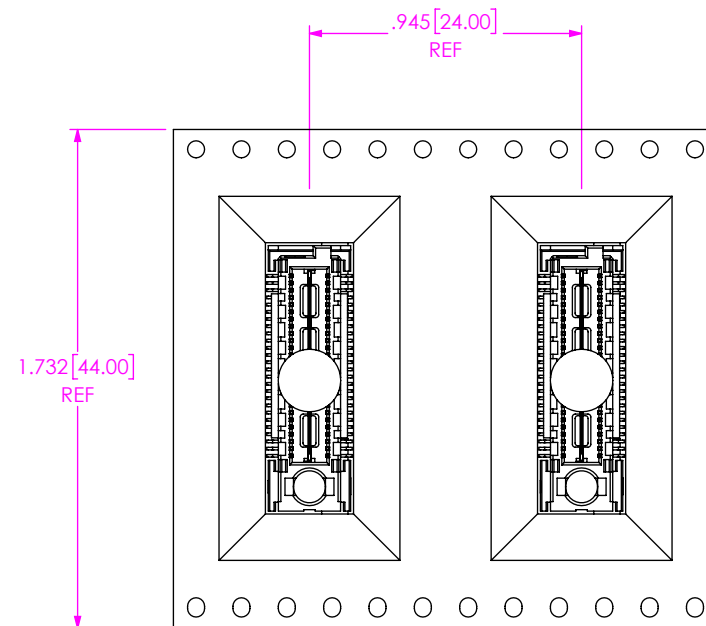
**samtec**

520 PARK EAST BLVD, NEW ALBANY, IN 47150  
PHONE: 812-944-6733 FAX: 812-948-5047  
e-Mail: info@SAMTEC.com code 55322

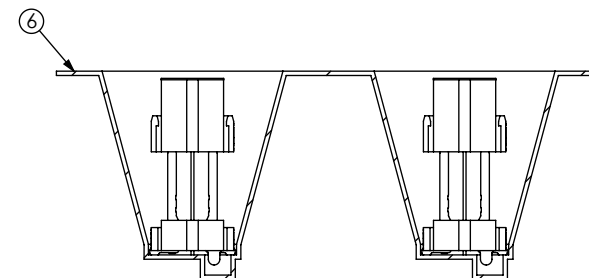
ITEM NO.	PART NUMBER	QUANTITY	MATERIAL
1	ASP-173281-02-B	1.0000	VECTRA E130i, COLOR: BLACK
2	ASP-129634-07-B	1.0000	VECTRA E130i, COLOR: BLACK
3	T-1M72-15.75-S	52.000	PHOS BRONZE, 521 EXTRA SPRING TEMPER
4	T-1G19-15.75-L	1.0000	PHOS BRONZE, 510 FULL HARD TEMPER
5	K-DOT-.217-.315-.005	1.0000	POLYIMIDE FILM
6	CT-ASP4332MS	.01000	CONDUCTIVE POLYMER



RECOMMENDED PCB LAYOUT  
(ALL DIMENSIONS ARE SYMMETRIC ABOUT THE CENTERLINE)



USER DIRECTION OF UN-REELING  
POCKET NOT DETAILED



PACKAGING VIEW

**PROPRIETARY NOTE**  
THIS DOCUMENT CONTAINS CONFIDENTIAL AND PROPRIETARY INFORMATION AND ALL DESIGN, MANUFACTURING, REPRODUCTION, USE, PATENT RIGHTS AND SALES RIGHTS ARE EXPRESSLY RESERVED BY SAMTEC, INC. THIS DOCUMENT SHALL NOT BE DISCLOSED, IN WHOLE OR PART, TO ANY UNAUTHORIZED PERSON OR ENTITY NOR REPRODUCED, TRANSFERRED OR INCORPORATED IN ANY OTHER PROJECT IN ANY MANNER WITHOUT THE EXPRESS WRITTEN CONSENT OF SAMTEC, INC.

SHEET SCALE: 2.5:1

**samtec**  
520 PARK EAST BLVD, NEW ALBANY, IN 47150  
PHONE: 812-944-6733 FAX: 812-948-5047  
e-Mail: info@SAMTEC.com code 55322

DESCRIPTION:  
MODIFIED ELEVATED QMS ASM

DWG. NO.  
ASP-142781-07

BY: J. BROWNING 06/26/2014 SHEET 2 OF 2

# Mouser Electronics

Authorized Distributor

Click to View Pricing, Inventory, Delivery & Lifecycle Information:

[Samtec:](#)

[ASP-142781-07](#)