

REVISION

DATE: _____

COMPANY: _____

CUSTOMER SIGNATURE _____

PRINTED NAME _____

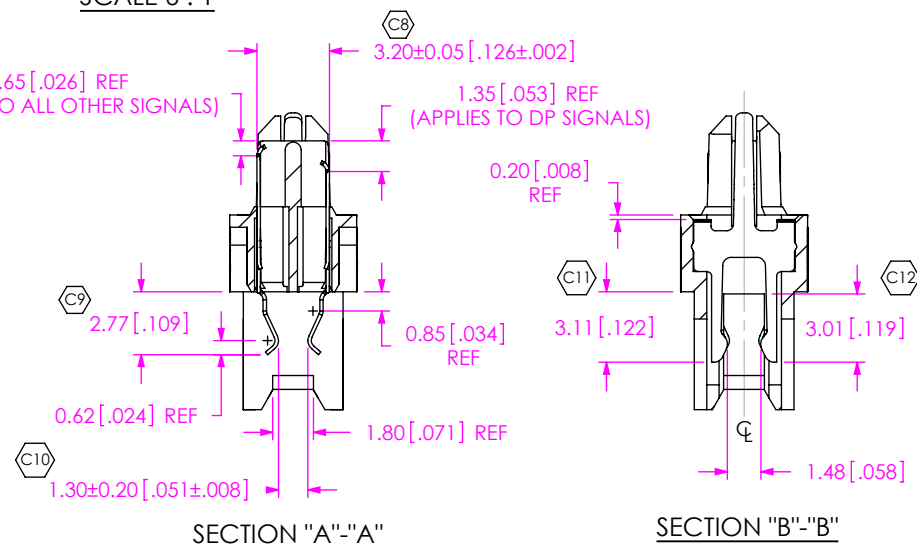
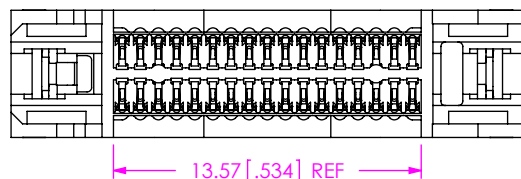
PHONE No: _____

FAX No: _____

☐ ACCEPTANCE OF DRAWING

☐ ACCEPTED WITH DEVIATIONS LISTED

1. ITEM 1 IS NOT AVAILABLE AS A STANDARD
2.  REPRESENTS A CRITICAL DIMENSION.
3. MAXIMUM BURR ALLOWANCE: .038[.0015].
4. MINIMUM PUSHOUT FORCE: 2.22N [.5 LB].
5. PARTS TO BE PACKAGED IN TRAYS.



UNLESS OTHERWISE SPECIFIED,
DIMENSIONS ARE IN INCHES.

TOLERANCES ARE:

DECIMALS	ANGLES
.X: $\pm .3[.01]$	2°
.XX: $\pm .13[.005]$	
.XXX: $\pm .051[.0020]$	

THIS DOCUMENT CONTAINS INFORMATION
CONFIDENTIAL AND PROPRIETARY TO
SAMTEC, INC. AND SHALL NOT BE REPRODUCED
OR TRANSFERRED TO OTHER DOCUMENTS OR
DISCLOSED TO OTHERS OR USED FOR ANY
PURPOSE OTHER THAN THAT WHICH IT WAS
OBTAINED WITHIN THE EXPRESSED WRITTEN
CONSENT OF SAMTEC, INC.

F:\DWG\SW\ASP\137000\ASP-137974-01.SLDDRW

PROPRIETARY NOTE
DOCUMENT CONTAINS INFORMATION
CONFIDENTIAL AND PROPRIETARY TO
SAMTEC, INC. AND SHALL NOT BE REPRODUCED
OR TRANSFERRED TO OTHER DOCUMENTS OR
DISCLOSED TO OTHERS OR USED FOR ANY
PURPOSE OTHER THAN THAT WHICH IT WAS
OBTAINED WITHOUT THE EXPRESSED WRITTEN
CONSENT OF SAMTEC, INC.

DO NOT SCALE DRAWING SHEET SCALE: 3:1

520 PARK EAST BLVD, NEW ALBANY, IN 47150
PHONE: 812-944-6733 FAX: 812-948-5047
e-Mail: info@SAMTEC.com code: 55322

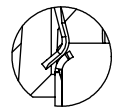
DESCRIPTION: MODIFIED ERM8 ASSEMBLY

DWG. NO. ASP-137974-01

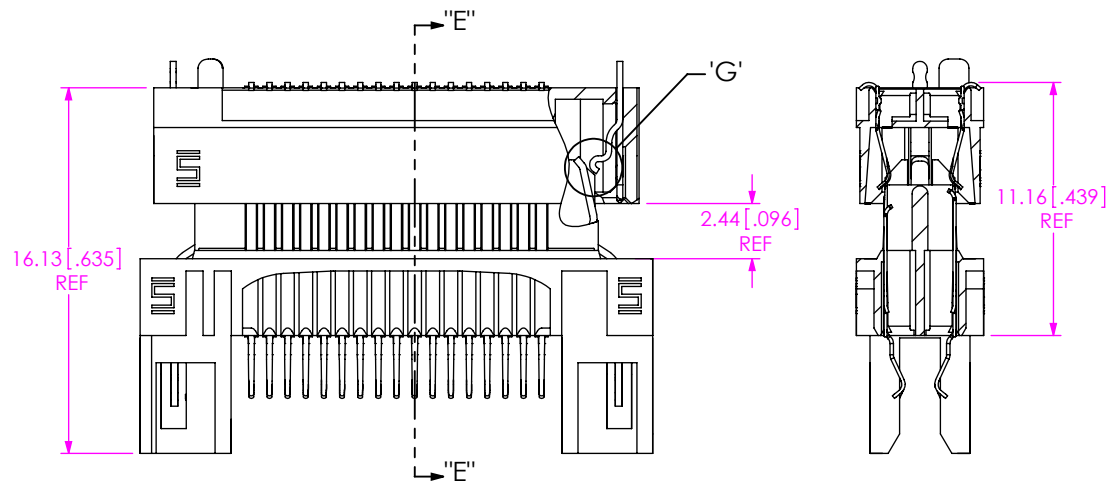
BY: David F	01/31/2008	SHEET 1 OF 2
-------------	------------	--------------



DETAIL 'G'
SCALE 6 : 1

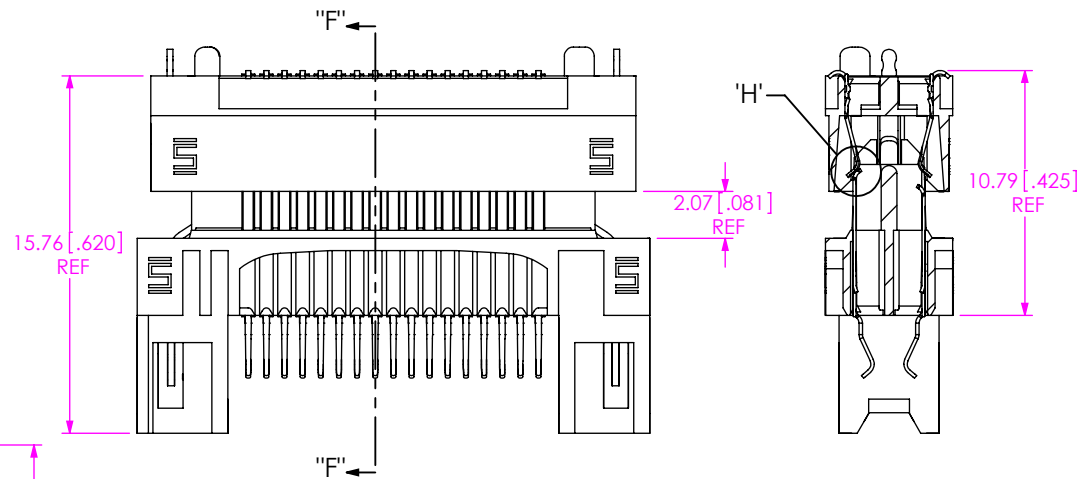


DETAIL 'H'
SCALE 6 : 1



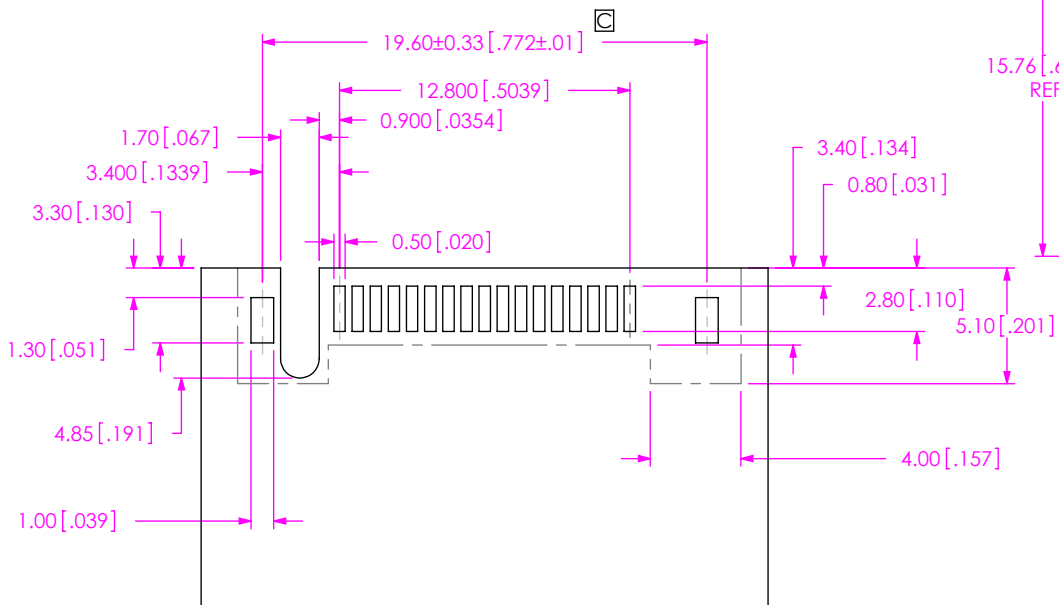
LATCH ENGAGING VIEW

SECTION "E"-"E"



PIN ENGAGING VIEW

SECTION "F"-"F"



RECOMMENDED PCB LAYOUT

PROPRIETARY NOTE

THIS DOCUMENT CONTAINS INFORMATION
CONFIDENTIAL AND PROPRIETARY TO
SAMTEC, INC. AND SHALL NOT BE REPRODUCED
OR TRANSFERRED TO OTHER DOCUMENTS OR
DISCLOSED TO OTHERS OR USED FOR ANY
PURPOSE OTHER THAN THAT WHICH IT WAS
OBTAINED WITHOUT THE EXPRESSED WRITTEN
CONSENT OF SAMTEC, INC.

SHEET SCALE: 3:1

samtec

520 PARK EAST BLVD, NEW ALBANY, IN 47150
PHONE: 812-944-6733 FAX: 812-948-5047
e-Mail: info@SAMTEC.com code: 55322

DESCRIPTION:

MODIFIED ERM8 ASSEMBLY

DWG. NO.

ASP-137974-01

BY: David F

01/31/2008

SHEET 2 OF 2

Mouser Electronics

Authorized Distributor

Click to View Pricing, Inventory, Delivery & Lifecycle Information:

[Samtec:](#)

[ASP-137974-01](#)