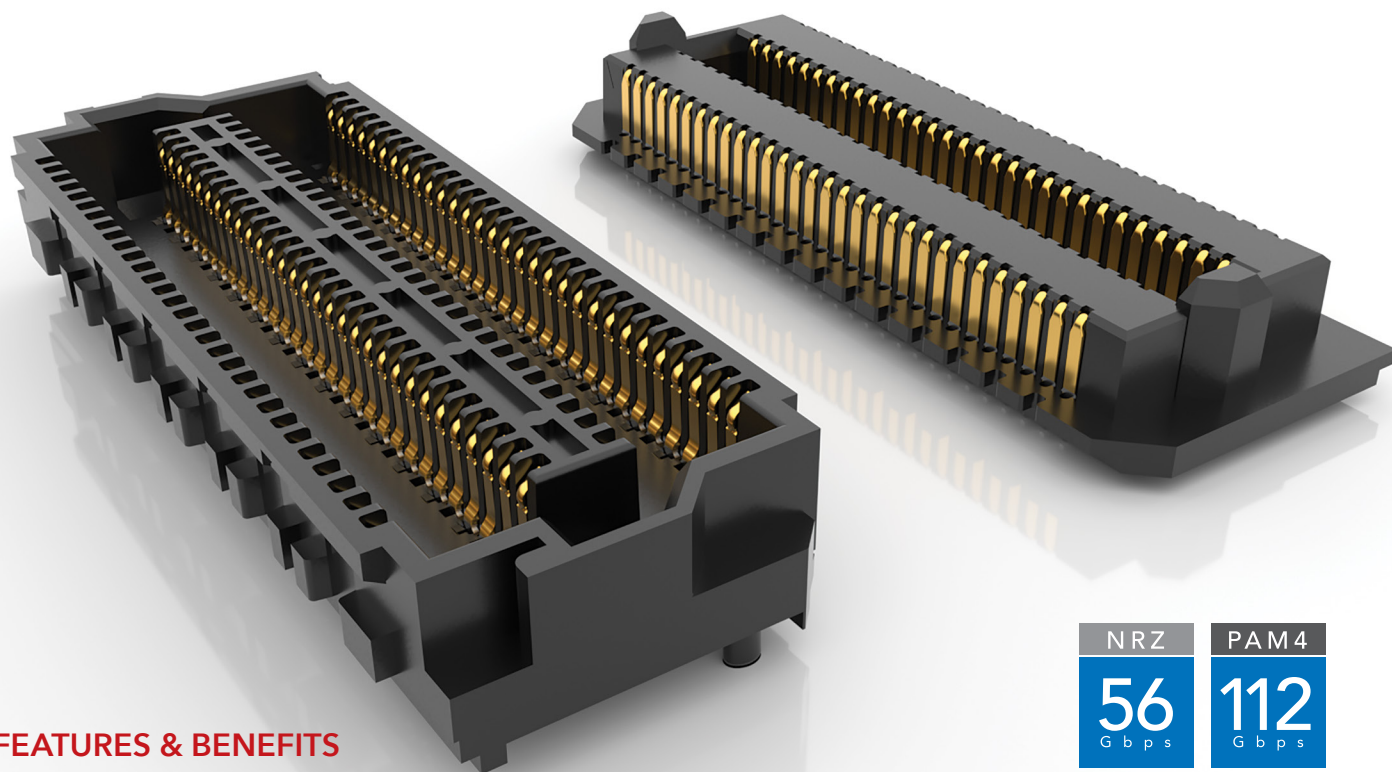


ACCELERATE[®]HP

HIGH-PERFORMANCE ARRAY SYSTEM

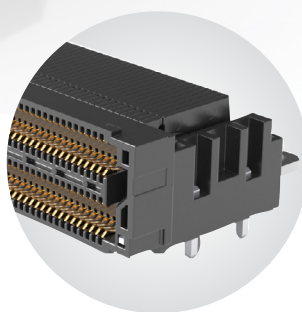
(0.635 mm) .025" PITCH



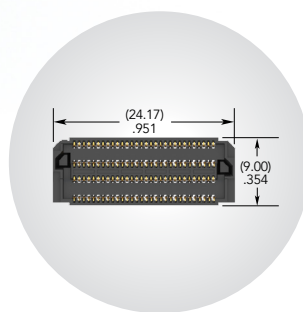
FEATURES & BENEFITS

- Flexible open-pin-field and cost optimized, extreme performance solution
- Low profile 5 mm and up to 10 mm stack heights
- 0.635 mm pitch
- Four row design with up to 400 total pins; roadmap to 1,000+ pins
- Data rate compatible with PCIe[®] 6.0/CXL[™] 3.1 and 100 GbE
- In Development: 6, 8 and 10 rows, additional position counts

NRZ	PAM4
56 Gbps	112 Gbps



Right-angle connector
(samtec.com?APF6-RA)



APF6 Series; 120 pins

KEY SPECIFICATIONS (APM6/APF6)

TOTAL PINS	INSULATOR MATERIAL	CONTACT MATERIAL	PLATING	OPERATING TEMP RANGE	CURRENT RATING	VOLTAGE RATING	LEAD-FREE SOLDERABLE
40 - 400	Black LCP	Copper Alloy	Au or Sn over 50 μ " (1.27 μ m) Ni	-55 °C to +125 °C	1.2 A (4 pins powered)	150 VAC/212 VDC	Yes

PCI-SIG[®], PCI Express[®] and the PCIe[®] design marks are registered trademarks and/or service marks of PCI-SIG.

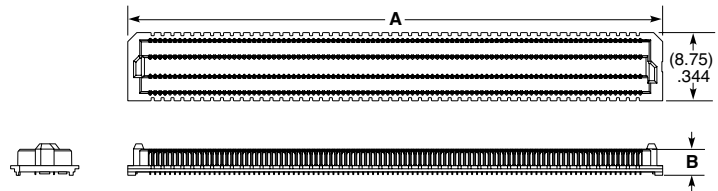
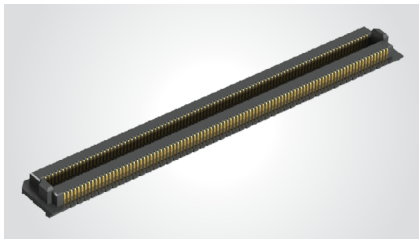
(0.635 mm) .025" PITCH • 112 Gbps PAM4 OPEN-PIN-FIELD ARRAYS

SERIES	NO. OF POSITIONS	LEAD STYLE	PLATING OPTION	NO. OF ROWS	0	OPTION	"X"R
APM6 Terminal	-020, -040, -060, -100 (per row)	-01.5 = 1.5 mm (APM6 only)	-L = 10 μ " (0.25 μ m) Gold on contact area, Matte Tin on tail	-04 = Four Rows		(Leave blank for no alignment pin)	-TR = Tape & Reel
APF6 Socket	-064 (per row) (APM6 & -01.9 lead style only)	-01.9 = 1.9 mm (APM6-064 only)	-S = 30 μ " (0.76 μ m) Gold on contact area, Matte Tin on tail			-A = Alignment Pin	-FR = Full Reel Tape & Reel (must order max. quantity per reel; contact Samtec for quantity breaks)
		-06.5 = 6.5 mm (APM6 only)					
		-03.5 = 3.5 mm (APF6 only)					

APM6

Board Mates:
APF6, APF6-RA

Standoffs:
GPSO



NO. OF POSITIONS PER ROW	A	LEAD STYLE	B
-020	(17.82) .701	-01.5	(3.33) .131
-040	(30.52) 1.201	-01.9	(3.71) .146
-060	(43.22) 1.701	-06.5	(8.33) .328
-064	(45.21) 1.780		
-100	(68.62) 2.701		

View complete specifications at: samtec.com?APM6

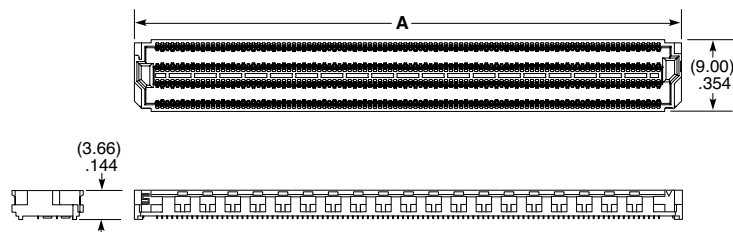
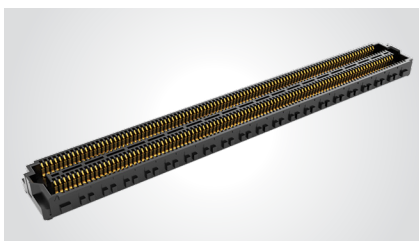
MATED HEIGHTS *		
APF6 LEAD STYLE	APM6 LEAD STYLE	
	-01.5	-06.5
-03.5	(5.00 mm) .197"	(10.00 mm) .394"

* Processing conditions will affect mated height.

APF6

Board Mates:
APM6

Standoffs:
GPSO



ALSO AVAILABLE

Right-angle
samtec.com?APF6-RA

Notes:

Some sizes, styles and options are non-standard, non-returnable

View complete specifications at: samtec.com?APF6

NO. OF POSITIONS PER ROW	A
-020	(17.82) .701
-040	(30.52) 1.201
-060	(43.22) 1.701
-100	(68.62) 2.701

Mouser Electronics

Authorized Distributor

Click to View Pricing, Inventory, Delivery & Lifecycle Information:

[Samtec:](#)

[ASP-209946-01](#)