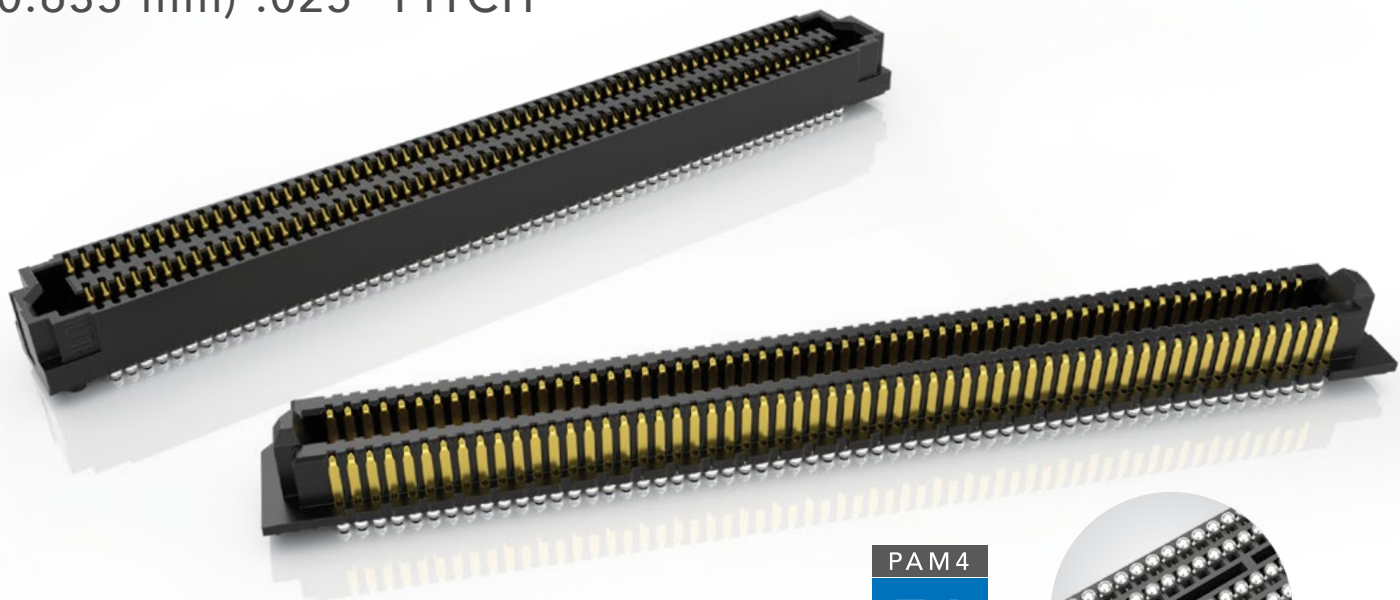


# ACCELERATE<sup>®</sup>HD

## HIGH-DENSITY SLIM BODY ARRAYS

(0.635 mm) .025" PITCH



PAM 4  
**56**  
G b p s

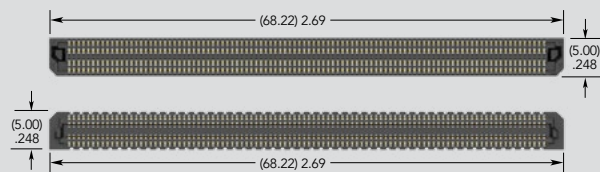


Solder ball technology  
for simplified processing

### FEATURES & BENEFITS

- Up to 240 positions in 4-row design (400 positions in development)
- Low-profile 5 mm stack heights
- Slim 5 mm width body design
- Edge Rate<sup>®</sup> contact system optimized for signal integrity performance
- Open-pin-field for grounding and routing flexibility
- PCIe<sup>®</sup> 5.0 capable
- Compatible with mPower<sup>®</sup> (UMPT/UMPS) for a power signal solution

### HIGHER DENSITY THAN PREVIOUS GENERATION STRIPS



ADM6/ADF6 Series (400 total positions)

### KEY SPECIFICATIONS

PITCH	TOTAL POSITIONS	INSULATOR MATERIAL	CONTACT MATERIAL	PLATING	OPERATING TEMP RANGE	CURRENT RATING	WORKING VOLTAGE	LEAD-FREE SOLDERABLE
(0.635 mm) .025"	40 - 240	Black LCP	Copper Alloy	Au or Sn over 50 $\mu$ " (1.27 $\mu$ m) Ni	-55 °C to +125 °C	1.34 A per pin (4 pins powered)	Testing now	Yes

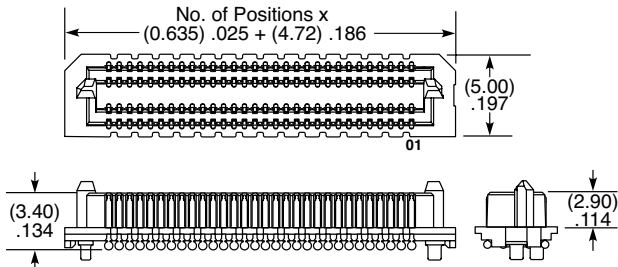
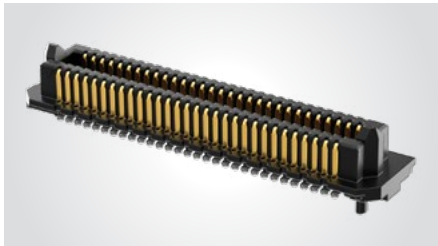
(0.635 mm) .025" PITCH • SLIM BODY OPEN-PIN-FIELD ARRAYS

SERIES	NO. OF POSITIONS	LEAD STYLE	PLATING OPTION	NO. OF ROWS	SOLDER TYPE	OPTION	"X" R
ADM6 Terminal	-10, -20, -30, -40, -50, -60 (per row)	-01.5 = 1.5 mm (ADM6 only)	-L = 10 μ" (0.25 μm) Gold on contact area, Matte Tin on tail	-4 = Four Rows	-2 = Lead-Free Solder Ball	(Leave blank for no alignment pin)	-TR = Tape & Reel
ADF6 Socket		-03.5 = 3.5 mm (ADF6 only)				-A = Alignment Pin	-FR = Full Reel Tape & Reel (must order max. quantity per reel; contact Samtec for quantity breaks)

ADM6

Board Mates:  
ADF6

Standoffs:  
JSO



View complete specifications at: [samtec.com?ADM6](http://samtec.com?ADM6)

MATED HEIGHTS \*

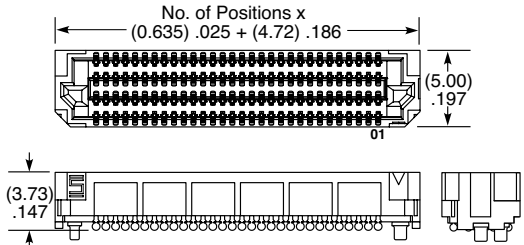
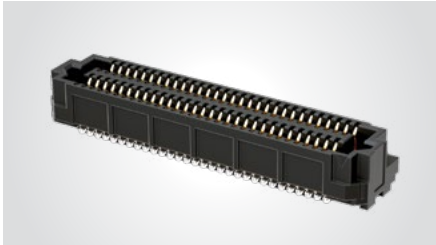
ADF6 LEAD STYLE	ADM6 LEAD STYLE
	-01.5
-03.5	(5 mm) .197"

\* Processing conditions will affect mated height.

ADF6

Board Mates:  
ADM6

Standoffs:  
JSO



**Notes:**  
Some sizes, styles and  
options are non-standard,  
non-returnable

View complete specifications at: [samtec.com?ADF6](http://samtec.com?ADF6)

# Mouser Electronics

Authorized Distributor

Click to View Pricing, Inventory, Delivery & Lifecycle Information:

Samtec:

[ADM6-40-01.5-L-4-2-A-TR](#)