

12 mm IP68 FIELD TERMINATION KIT

SPECIFICATIONS

For complete specifications and processing guidelines see www.samtec.com?ACRK-12

Insulator Material:

Thermoplastic

Terminal Material:

Brass

Contact Material:

Brass/BeCu

Plating:

Au over
50 μ " (1.27 μ m) Ni

Operating Temp Range:

-10 °C to +80 °C

Housing:

-P: Black Nylon

-M: Zinc Alloy

RoHS Compliant:

Yes

Mates with:

ACP-12, ACPK-12

CURRENT RATING

LEAD STYLE	PINS POWERED	CCC per PIN
-01	4	3.8 A
-02	5	3.6 A
-05	2 (plus 4 signal pins powered @ 1.2 A)	5.0 A

For general reference only. See www.samtec.com?ACRK-12 for complete test data or contact AccliMate@samtec.com for applications requiring higher current carrying capacity.

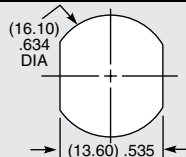
DUST CAPS

- DCA-ACR-12-M-X (Metal)
- DCA-ACR-12-P-X (Plastic)



- Visit sealedio.samtec.com for a complete list of sealed systems

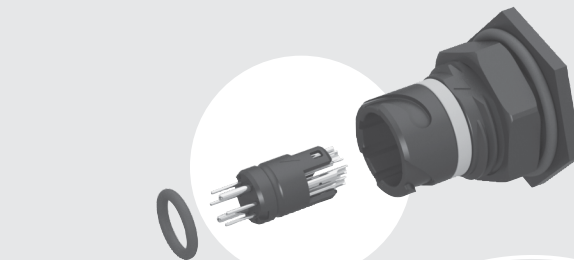
PANEL OPENING



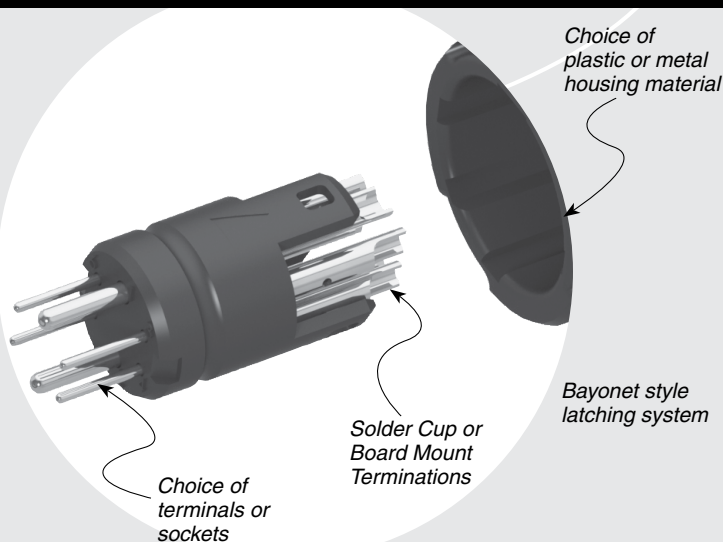
NOTE

For complete specifications and processing guidelines see www.samtec.com?ACRK-12

Note:
Some lengths, styles and options are non-standard, non-returnable.



ACRK-12-05-G-T-C-P-1



ACRK

12

LEAD STYLE

PLATING

GENDER

TERMINATION

HOUSING MATERIAL

KEY

-01

= 1.0 mm DIA (4)
terminals or sockets
(20-24 AWG)

-02

= 1.0 mm DIA (5)
terminals or sockets
(20-24 AWG)

-05

= 1.0 mm DIA (2)
terminals or sockets
(20-24 AWG)
+ 0.5 mm DIA (4)
terminals or sockets
(26-30 AWG)

-G
= 10 μ "
(0.25 μ m)
Gold
over
50 μ "
(1.27 μ m)
Ni on
contact

-T
= Terminal

-S
= Socket

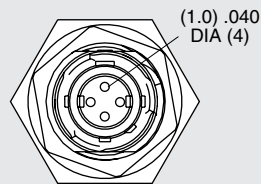
-C
= Solder Cup

-B1
= (1.60 mm) .062"
Board Mount

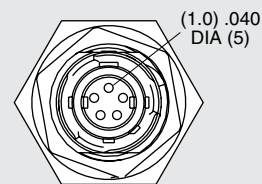
-P
= Plastic

-M
= Metal

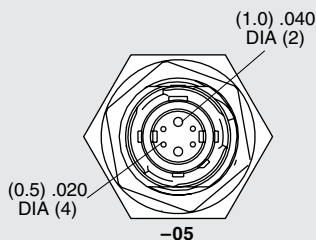
-1
= Orange,
45°



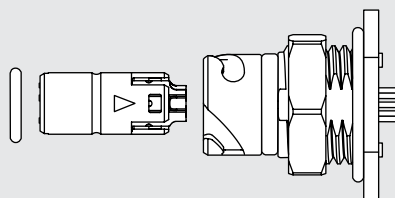
-01



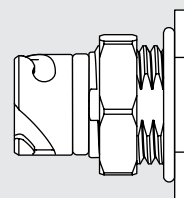
-02



-05



-B1 END SHOWN



-C END SHOWN

Mouser Electronics

Authorized Distributor

Click to View Pricing, Inventory, Delivery & Lifecycle Information:

Samtec:

[ACRK-12-05-G-S-B1-P-1](#) [ACRK-12-02-G-S-C-P-1](#) [ACRK-12-05-G-S-C-M-1](#) [ACRK-12-02-G-S-B1-P-1](#) [ACRK-12-05-G-S-B1-M-1](#) [ACRK-12-02-G-S-C-M-1](#) [ACRK-12-05-G-S-C-P-1](#) [ACRK-12-02-G-S-B1-M-1](#)