

# 12 mm IP68 FIELD TERMINATION KIT

## SPECIFICATIONS

For complete specifications and processing guidelines see [www.samtec.com?ACRK-12](http://www.samtec.com?ACRK-12)

### Insulator Material:

Thermoplastic

### Terminal Material:

Brass

### Contact Material:

Brass/BeCu

### Plating:

Au over  
50  $\mu$ " (1.27  $\mu$ m) Ni

### Operating Temp Range:

-10 °C to +80 °C

### Housing:

-P: Black Nylon

-M: Zinc Alloy

### RoHS Compliant:

Yes

### Mates with:

ACP-12, ACPK-12

### CURRENT RATING

LEAD STYLE	PINS POWERED	CCC per PIN
-01	4	3.8 A
-02	5	3.6 A
-05	2 (plus 4 signal pins powered @ 1.2 A)	5.0 A

For general reference only. See [www.samtec.com?ACRK-12](http://www.samtec.com?ACRK-12) for complete test data or contact [AccliMate@samtec.com](mailto:AccliMate@samtec.com) for applications requiring higher current carrying capacity.



**Solutionator.**  
DESIGN IN A MINUTE



Choice of terminals or sockets

Solder Cup or Board Mount Terminations

Choice of plastic or metal housing material

Bayonet style latching system

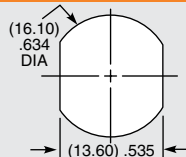
## DUST CAPS

- DCA-ACR-12-M-X (Metal)
- DCA-ACR-12-P-X (Plastic)



- Visit [sealedio.samtec.com](http://sealedio.samtec.com) for a complete list of sealed systems

## PANEL OPENING



## NOTE

For complete specifications and processing guidelines see [www.samtec.com?ACRK-12](http://www.samtec.com?ACRK-12)

**Note:**  
Some lengths, styles and options are non-standard, non-returnable.

ACRK	12	LEAD STYLE	PLATING	GENDER	TERMINATION	HOUSING MATERIAL	KEY
		<b>-01</b> = 1.0 mm DIA (4) terminals or sockets (20-24 AWG)  <b>-02</b> = 1.0 mm DIA (5) terminals or sockets (20-24 AWG)  <b>-05</b> = 1.0 mm DIA (2) terminals or sockets (20-24 AWG) + 0.5 mm DIA (4) terminals or sockets (26-30 AWG)	<b>-G</b> = 10 $\mu$ " (0.25 $\mu$ m) Gold over 50 $\mu$ " (1.27 $\mu$ m) Ni on contact  <b>-T</b> = Terminal  <b>-S</b> = Socket	<b>-T</b> = Terminal  <b>-S</b> = Socket	<b>-C</b> = Solder Cup  <b>-B1</b> = (1.60 mm) .062" Board Mount	<b>-P</b> = Plastic  <b>-M</b> = Metal	<b>-1</b> = Orange, 45°

(1.0) .040 DIA (4)

-01

(1.0) .040 DIA (5)

-02

(0.5) .020 DIA (4)

(1.0) .040 DIA (2)

-05

-B1 END SHOWN

-C END SHOWN

Due to technical progress, all designs, specifications and components are subject to change without notice.

[WWW.SAMTEC.COM](http://WWW.SAMTEC.COM)

All parts within this catalog are built to Samtec's specifications.

Customer specific requirements must be approved by Samtec and identified in a Samtec customer-specific drawing to apply.

# Mouser Electronics

Authorized Distributor

Click to View Pricing, Inventory, Delivery & Lifecycle Information:

Samtec:

[ACRK-12-05-G-S-B1-P-1](#) [ACRK-12-02-G-S-C-P-1](#) [ACRK-12-05-G-S-C-M-1](#) [ACRK-12-02-G-S-B1-P-1](#) [ACRK-12-05-G-S-B1-M-1](#) [ACRK-12-02-G-S-C-M-1](#) [ACRK-12-05-G-S-C-P-1](#) [ACRK-12-02-G-S-B1-M-1](#)