

REVISION

0	AH	T WILD
06/27/2024	ECN-24-5506-1	
ISSUE FOR REVIEW.		

NOT RELEASED
FOR PRODUCTION

USE FOR QUOTING, PRELIMINARY
DESIGN, PROTOTYPING AND
INFORMATIONAL PURPOSES ONLY

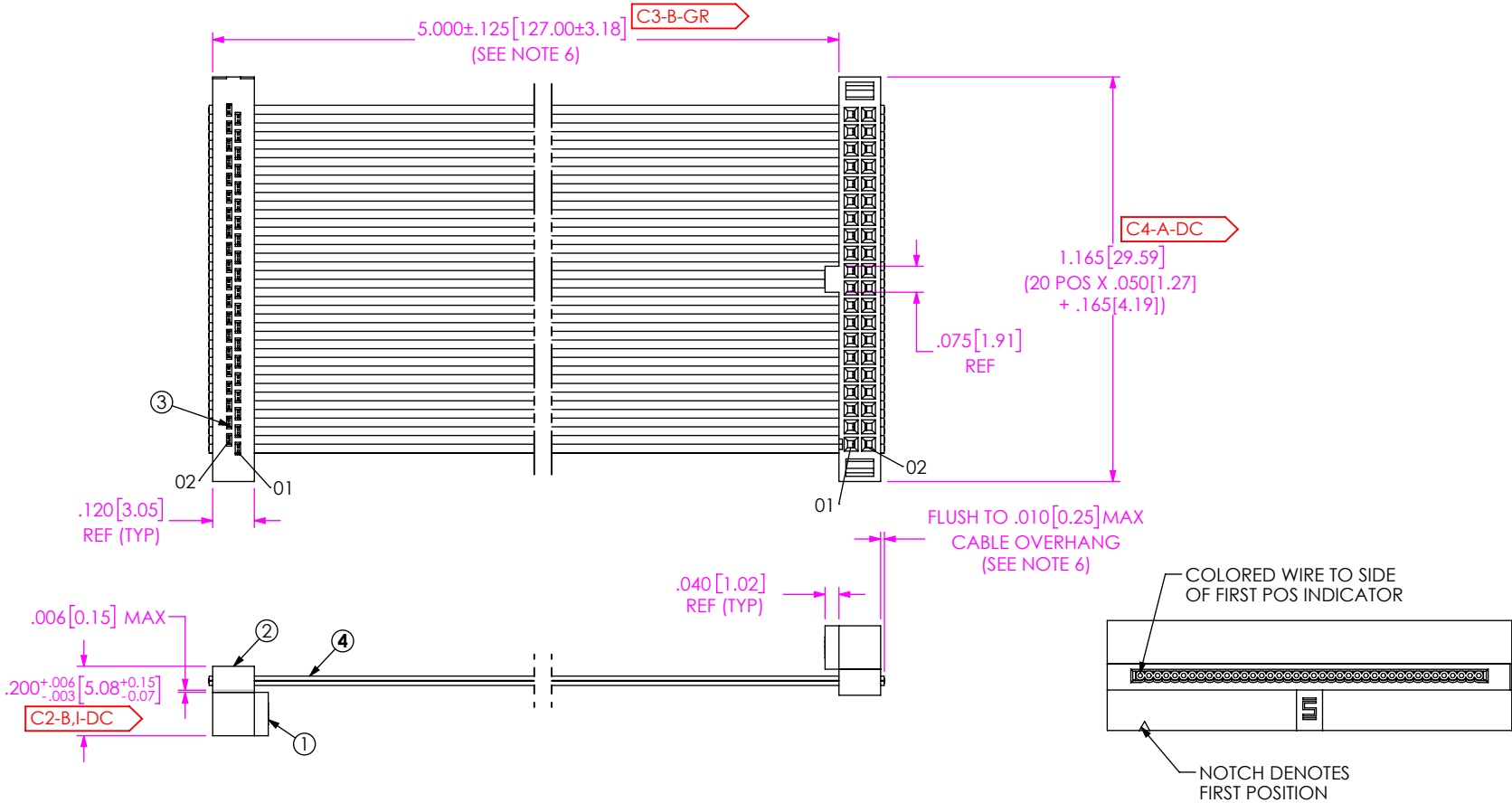
BY SIGNING THIS DOCUMENT
YOU ARE ACCEPTING THE
CONDITIONS SET WITHIN.
YOUR REQUIREMENTS MUST BE
LISTED WITHIN THIS DRAWING.
WHERE NO DIRECTION FROM THE
CUSTOMER IS IDENTIFIED
SAMTEC'S PROCESS
REQUIREMENTS WILL BE USED.

DATE: _____
COMPANY: _____
CUSTOMER SIGNATURE: _____
PRINTED NAME: _____
PHONE NO: _____
EXCEPTIONS: _____

NOTES:

1. **TEFLON CABLE NOT AVAILABLE AS STANDARD.**
2. **CX-X-XX** REPRESENTS A CRITICAL DIMENSION.
3. FFSD CABLE ASSEMBLIES ARE LEAD FREE.
4. ALL ASSEMBLIES TO BE 100% ELECTRICALLY TESTED FOR SHORTS AND OPENS.
5. ALL ASSEMBLIES TO BE 100% HI-POT TESTED AT 630V.
6. WHEN CUTTING CABLE TO LENGTH, CONDUCTORS SHOULD NOT EXTEND PAST THE CABLE INSULATION, EXTENDING LESS THAN 25% OF CABLE THICKNESS ON CONSECUTIVE AND LESS THAN 50% OF CABLE THICKNESS ON NON-CONSECUTIVE STRANDS IS CONSIDERED A PROCESS INDICATOR.
7. REFERENCE FFSD-XX-XX-X-N-XXX FOR CONNECTOR ASSEMBLY DIMENSIONS AND ITS REQUIREMENTS.
8. PARTS TO BE PACKAGED IN BULK.
9. ORDERS WILL BE PACKAGED ACCORDING TO THE SAMTEC PACKAGING EFFICIENCY STANDARDS (SPES) FOUND ON WWW.SAMTEC.COM.

C1-D-ET



UNLESS OTHERWISE SPECIFIED,
DIMENSIONS ARE IN INCHES.

TOLERANCES ARE:

DECIMALS

ANGLES

.XX: ±.01 [0.3]

2°

.XXX: ±.005 [0.13]

.XXXX: ±.0020 [0.051]

PROPRIETARY NOTE

THIS DOCUMENT CONTAINS CONFIDENTIAL AND PROPRIETARY INFORMATION AND ALL DESIGN, MANUFACTURING, REPRODUCTION, USE, PATENT RIGHTS AND SALES RIGHTS ARE EXPRESSLY RESERVED BY SAMTEC, INC. THIS DOCUMENT SHALL NOT BE DISCLOSED, IN WHOLE OR PART, TO ANY UNAUTHORIZED PERSON OR ENTITY NOR REPRODUCED, TRANSFERRED OR INCORPORATED IN ANY OTHER PROJECT IN ANY MANNER WITHOUT THE EXPRESS WRITTEN CONSENT OF SAMTEC, INC.

DO NOT SCALE DRAWING

SHEET SCALE: 2:1

PLATING:

CONTACT AREA: .000030 GOLD OVER .000050 NICKEL

REMAINDER: .000200 TIN OVER .000050 NICKEL

samtec

520 PARK EAST BLVD, NEW ALBANY, IN 47150
PHONE: 812-944-6733 FAX: 812-948-5047
e-Mail: info@SAMTEC.com code 55322

DESCRIPTION:

MODIFIED .050 x .050 DOUBLE ROW FEMALE IDC ASM

DWG. NO.

ASP-238410-03

BY: ANN H

6/28/2024

SHEET 1 OF 1

ITEM NO.	PART NUMBER	QUANTITY	MATERIAL
1	FFS-20-D	2.0000	VALOX 420 SEO, COLOR: BLACK
2	FFC-20-D	2.0000	VALOX 420 SEO, COLOR: BLACK
3	C-67-S	80.000	BECU
4	ASP-136680-01-C	5.0000	TEFLON/SILVER PLATED COPPER

F:\dwg\sw\asp\238000\ASP-238410-03.SLDRW

Mouser Electronics

Authorized Distributor

Click to View Pricing, Inventory, Delivery & Lifecycle Information:

[Samtec:](#)

[ASP-238410-03](#)