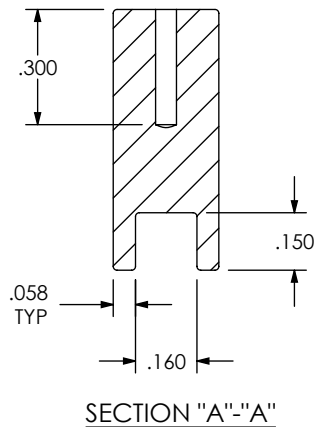
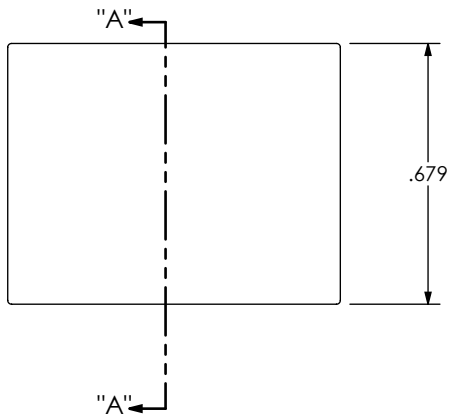
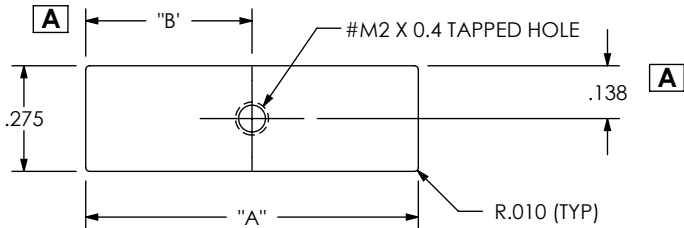


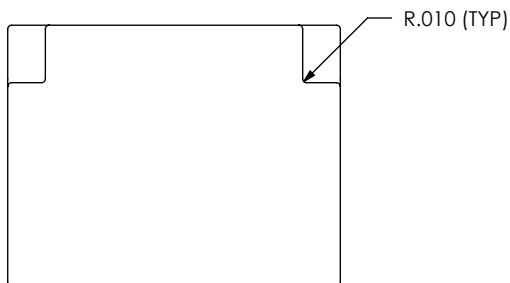
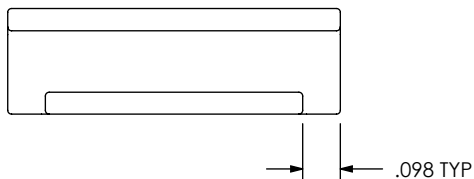
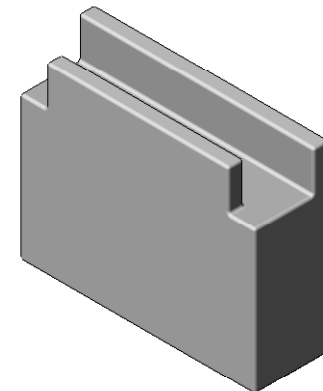
DO NOT
SCALE FROM
THIS PRINT



CAT-UPTT-XX

UPT PUSH TOOL

NO OF POSITIONS
02, 04, 06, 08



A

TABLE 1

PART NUMBER	"A"	"B"
CAT-UPTT-02	.5660	0.283
CAT-UPTT-04	.8660	0.433
CAT-UPTT-06	1.1660	0.583
CAT-UPTT-08	1.4660	0.733

NOTES:

1. Ⓢ REPRESENTS A CRITICAL DIMENSION.
2. BREAK ALL SHARP EDGES UNLESS OTHERWISE SPECIFIED.
3. PART TO HAVE COMPLETE PART NUMBER, VENDOR NAME AND D.O.M. ENGRAVED.
4. ALL PARTS TO MEET SAMTEC SPECIFICATIONS SAM-5000
5. E.D.M. FINISH CHARMILLES # 24 OR BETTER ON THESE SURFACES.
6. ALL DIMENSIONS APPLICABLE AFTER CHROME FINISH.

UNLESS OTHERWISE SPECIFIED,
DIMENSIONS ARE IN INCHES.
TOLERANCES ARE:
DECIMALS ANGLES
.XX: ±.01 [.3] 2°
.XXX: ±.005 [.13]
.XXXX: ±.0020 [.051]

PROPRIETARY NOTE
THIS DOCUMENT CONTAINS INFORMATION
CONFIDENTIAL AND PROPRIETARY TO
SAMTEC, INC. AND SHALL NOT BE REPRODUCED
OR TRANSFERRED TO OTHER DOCUMENTS OR
DISCLOSED TO OTHERS OR USED FOR ANY
PURPOSE OTHER THAN THAT WHICH IT WAS
OBTAINED WITHOUT THE EXPRESSED WRITTEN
CONSENT OF SAMTEC, INC.

samtec

520 PARK EAST BLVD, NEW ALBANY, IN 47150
PHONE: 812-944-6733 FAX: 812-948-5047
e-Mail info@SAMTEC.com code 55322

MATERIAL: DO NOT SCALE DRAWING SHEET SCALE: 2:1

H13 40-50 HRC
FLASH CHROME

DESCRIPTION:
UPXT COMPLIANT PIN UPPER PUSH TOOL

DWG. NO.
CAT-UPTT-XX

BY: KRM 7/16/10 SHEET 1 OF 1

c:\enterprisevault\DWG\MISC\MKTG\CAT-UPTT-XX-MKT.SLDDRW

Mouser Electronics

Authorized Distributor

Click to View Pricing, Inventory, Delivery & Lifecycle Information:

Samtec:

[CAT-UPTT-02](#) [CAT-UPTT-04](#) [CAT-UPTT-06](#) [CAT-UPTT-08](#)