

HDR-124289-XX-6QDPS		
REVISION		
F	AC	G LEWIS
9/26/2011	ECN-163313	
UPDATE MODEL FOR ASP-111519-01-C, UPDATE TO LONGER LENGTH STS.		
G	AC	G LEWIS
4/30/2012	ECN-176962	
SHT 2 SUB SIDE VIEW: UPDATE CONN TO SHOW SHIELD TERMINALS CLIPPED		
H	FA	G LEWIS
8/1/2013	ECN-208860	
NOTE 6 SHOULD BE ITEM 8 NOT 7		
J	JW	A SHROUT
1/19/2014	ECN-219424	
SHT 2, J1 VIEW: ADD BALLOON 3; BOM, ITEM 3: CHG PT-1-24-18-29 TO PT-1-24-01-152, CHG .04545 TO .04167; ITEM 4: CHG TP-07 TO TP-38, CHG .09191 TO .08333.		

HDR SETUP OPTION:
EQCD-1 BANK
PCB SETUP OPTION:
OPTION 4



THIS PRODUCT MANUFACTURED WITH LEAD-FREE PROCESSING

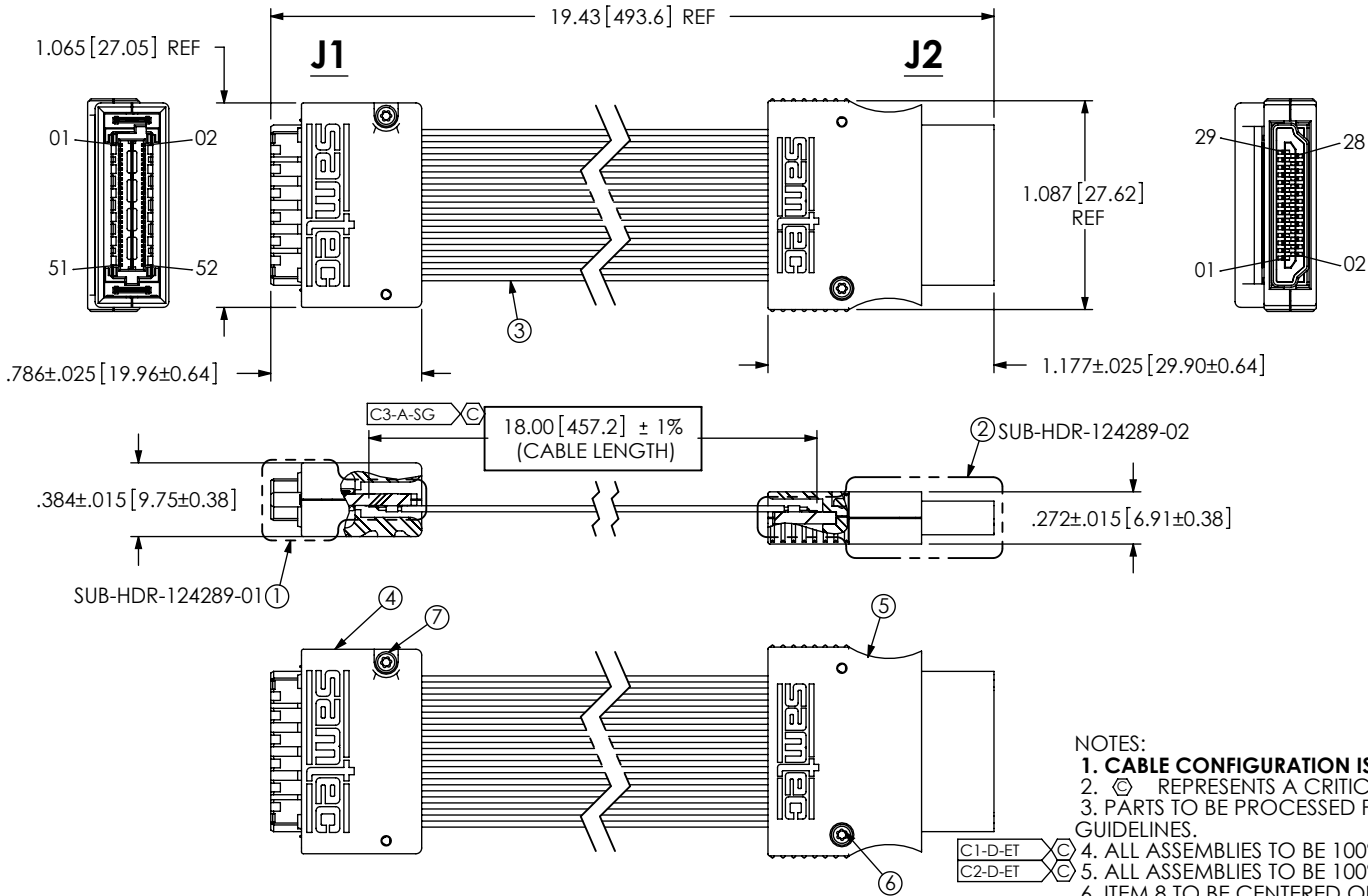


TABLE 1		
SIGNAL MAPPING		
J1	CABLE	J2
GND	GROUND	29
GND	GROUND	28
1	1	27
3	GROUND	26
5	2	25
7	3	24
9	4	23
11	5	22
13	6	21
15	7	20
17	8	19
19	9	18
21	10	17
23	11	16
25	12	15
27	13	14
29	14	13
31	15	12
33	16	11
35	17	10
37	18	9
39	19	8
41	20	7
43	21	6
45	22	5
47	23	4
49	GROUND	3
51	24	2
GND	GROUND	1

TABLE 2	
PART #	DESCRIPTION
HDR-124289-01-6QDPS	(AS SHOWN)

- NOTES:
1. CABLE CONFIGURATION IS NON-STANDARD.
 2. Ⓢ REPRESENTS A CRITICAL DIMENSION.
 3. PARTS TO BE PROCESSED PER SAMTEC BOUNDARY DOCUMENT GUIDELINES.
 4. ALL ASSEMBLIES TO BE 100% ELECTRICALLY TESTED.
 5. ALL ASSEMBLIES TO BE 100% HI-POT TESTED AT 300V.
 6. ITEM 8 TO BE CENTERED ON ITEM 3 AS SHOWN. ITEM 8 TO CONTAIN: LINE 1 - PART NUMBER "HDR-XXXXXX-XX", LINE 2 SHOP ORDER NUMBER "XXXXXX", AND LINE 3 - DATE CODE "XXXXX".
 7. FOR PROCESSING INFORMATION ON SUB-ASSEMBLIES, REFERENCE SUB-HDR-124289-XX TRAVELER.XLS.
 8. FOR SUB-ASSEMBLY AND FINISHED GOOD PACKAGING REQUIREMENTS, REFERENCE PACKAGING STANDARD CO-HD-WI-3033-M.
 9. PANEL PCB-100753-HDR-XX YIELDS (5) PCB-100753-HDR-01 BOARDS AND PANEL PCB-100754-HDR-XX YIELDS (5) PCB-100754-HDR-01 BOARDS.

HDR-124289-XX-6QDPS BOM				
ITEM NO.	PART NUMBER	DESCRIPTION	QUANTITY	MATERIAL
1	SUB-HDR-124289-01	SUB ASSEMBLY	1	SUB ASSEMBLY
2	SUB-HDR-124289-02	SUB ASSEMBLY	1	PCB
3	SUB-TCF-3450F-25-02-18.00	34 AWG COAX CABLE	1	SUB ASSEMBLY
4	ASP-111519-01-C	HOUSING	2	IDEMITSU XAREC EA522BK, COLOR: BLACK
5	PDP-29-03	HOUSING	2	IDEMITSU XAREC EA522BK, COLOR: BLACK
6	STS-01	FASTENER	2	LOW CARBON STEEL
7	STS-04	FASTENER	2	LOW CARBON STEEL
8	HDRL-11	LABEL	1	SELF LAMINATING VINYL, B-427

TOLERANCES DO NOT APPLY TO REFERENCE DIMENSIONS, UNLESS OTHERWISE SPECIFIED, DIMENSIONS ARE IN INCHES.

TOLERANCES ARE:

DECIMALS ANGLES

.XX: ±.01 [3] 2°

.XXX: ±.005 [13]

.XXXX: ±.0020 [051]

PROPRIETARY NOTE

THIS DOCUMENT CONTAINS INFORMATION CONFIDENTIAL AND PROPRIETARY TO SAMTEC, INC. AND SHALL NOT BE REPRODUCED OR TRANSFERRED TO OTHER DOCUMENTS OR DISCLOSED TO OTHERS OR USED FOR ANY PURPOSE OTHER THAN THAT WHICH IT WAS OBTAINED WITHOUT THE EXPRESSED WRITTEN CONSENT OF SAMTEC, INC.

DO NOT SCALE DRAWING SHEET SCALE: 1:1



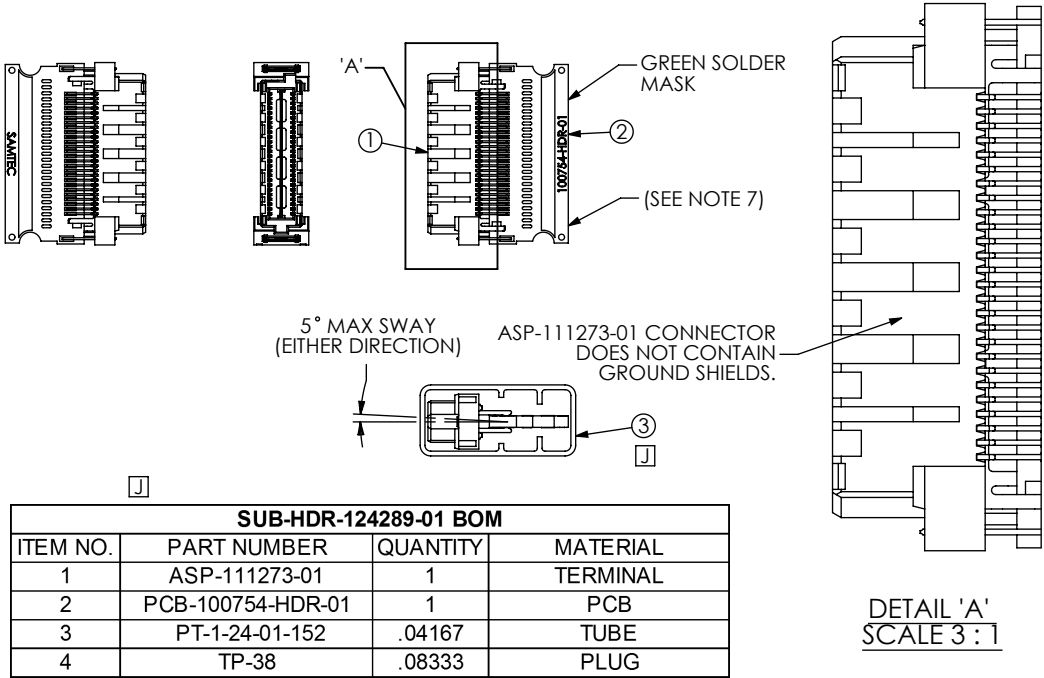
520 PARK EAST BLVD, NEW ALBANY, IN 47150
PHONE: 812-944-6733 FAX: 812-948-5047
e-Mail: info@SAMTEC.com code 55322

DESCRIPTION:	CUSTOM HDR CABLE ASSEMBLY
DWG. NO.	HDR-124289-XX-6QDPS
BY: J.BORGELT 03/15/2006	SHEET 1 OF 2

THIS PRODUCT MANUFACTURED
WITH LEAD-FREE PROCESSING

HDR SETUP OPTION:
SUB-XQCD-03-1 BANK
PCB SETUP OPTION:
OPTION 4

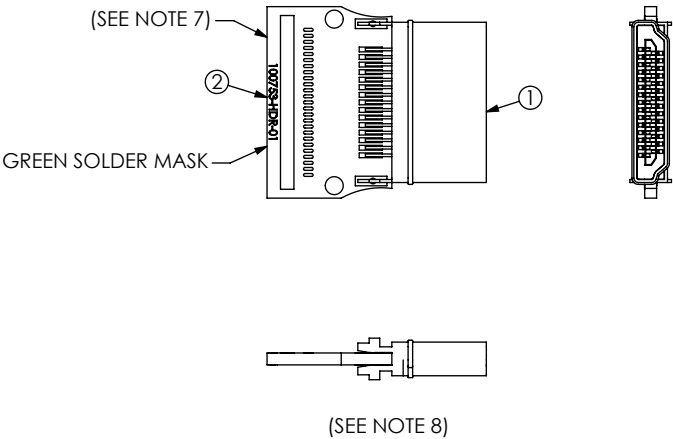
J1
SUB-HDR-124289-01



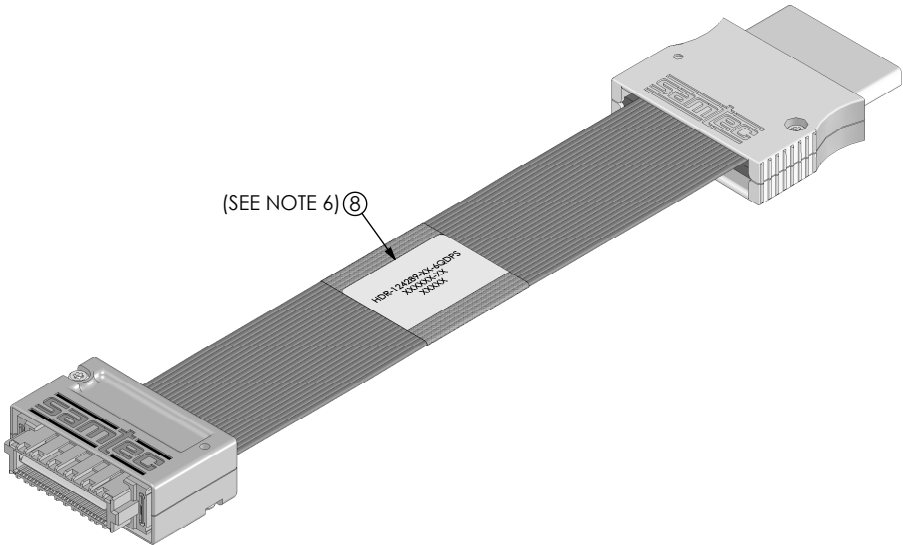
THIS PRODUCT MANUFACTURED
WITH LEAD-FREE PROCESSING

HDR SETUP OPTION:
SUB-XQCD-03-1 BANK
PCB SETUP OPTION:
OPTION 4

J2
SUB-HDR-124289-02



SUB-HDR-124289-02 BOM			
ITEM NO.	PART NUMBER	QUANTITY	MATERIAL
1	HDMIP-29-01-S-EM	1	TERMINAL
2	PCB-100753-HDR-01	1	PCB



F:\dwg\hdr\124000\hdr-124289-xx-6qdp\hdr-124289-xx-6QDPS.SLDDRW

SHEET SCALE: 1:1	PROPRIETARY NOTE THIS DOCUMENT CONTAINS INFORMATION CONFIDENTIAL AND PROPRIETARY TO SAMTEC, INC. AND SHALL NOT BE REPRODUCED OR TRANSFERRED TO OTHER DOCUMENTS OR DISCLOSED TO OTHERS OR USED FOR ANY PURPOSE OTHER THAN THAT WHICH IT WAS OBTAINED WITHOUT THE EXPRESSED WRITTEN CONSENT OF SAMTEC, INC.	
	DESCRIPTION: CUSTOM HDR CABLE ASSEMBLY	
	DWG. NO. HDR-124289-XX-6QDPS	
BY: J.BORGELT 03/15/2006		SHEET 2 OF 2

Mouser Electronics

Authorized Distributor

Click to View Pricing, Inventory, Delivery & Lifecycle Information:

[Samtec:](#)

[HDR-124289-01-6QDPS](#)