

TABLE 1	
LEAD STYLE	BOARD SPACE WHEN MATED WITH TOLC
-02	.250 [6.35]

SOLC-1XX-XX-XXX-Q-X

## NO OF POSITIONS

-05, -10, -15, -20, -25  
-30, -35, -40, -45, -50  
(PER ROW)

## LEAD STYLE

-02: (USE C-89-01-X)

## PLATING SPEC

-F: 3μ" GOLD IN CONTACT AREA  
3μ" GOLD ON TAIL  
-L: 10μ" GOLD IN CONTACT AREA  
3μ" GOLD ON TAIL  
-S: 30μ" GOLD IN CONTACT AREA  
3μ" GOLD ON TAIL

\*-STL: 30μ" GOLD IN CONTACT AREA  
TIN / LEAD ON TAIL  
(\* = EXISTING CUSTOMERS ONLY)

## OPTIONS

-LC: LOCKING CLIP (SEE FIG 2,  
SHT 2) (SEE NOTE 5)  
NOT AVAILABLE WITH -A  
-A: ALIGNMENT PINS (SEE FIG 3,  
SHT 2)  
(USE SOLC-XX-Q-A)  
(NOT AVAILABLE WITH -LC)  
-TR: TAPE & REEL  
-P: PICK & PLACE PAD  
(USE MPP-07, SEE FIG 4, SHT 2)  
-K: POLYIMIDE FILM PAD  
(SEE FIG 5, SHT 2)  
(USE K-DOT-.276-.375-.005)

## ROW SPEC

-Q: QUAD  
(USE SOLC-XX-Q)

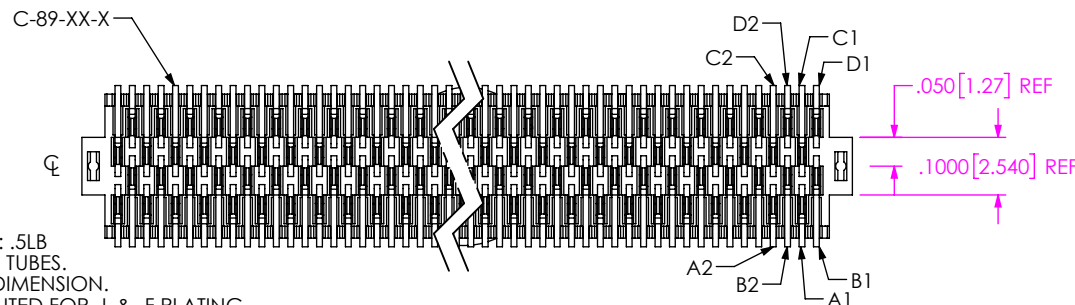
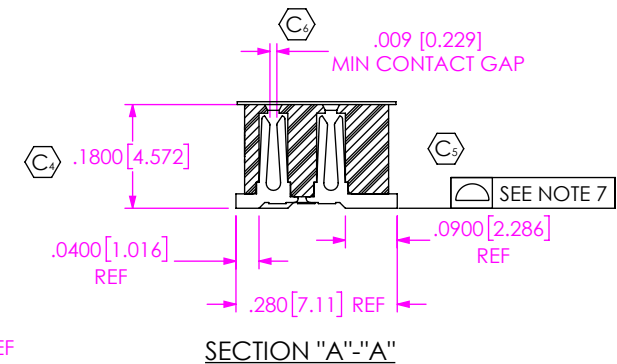
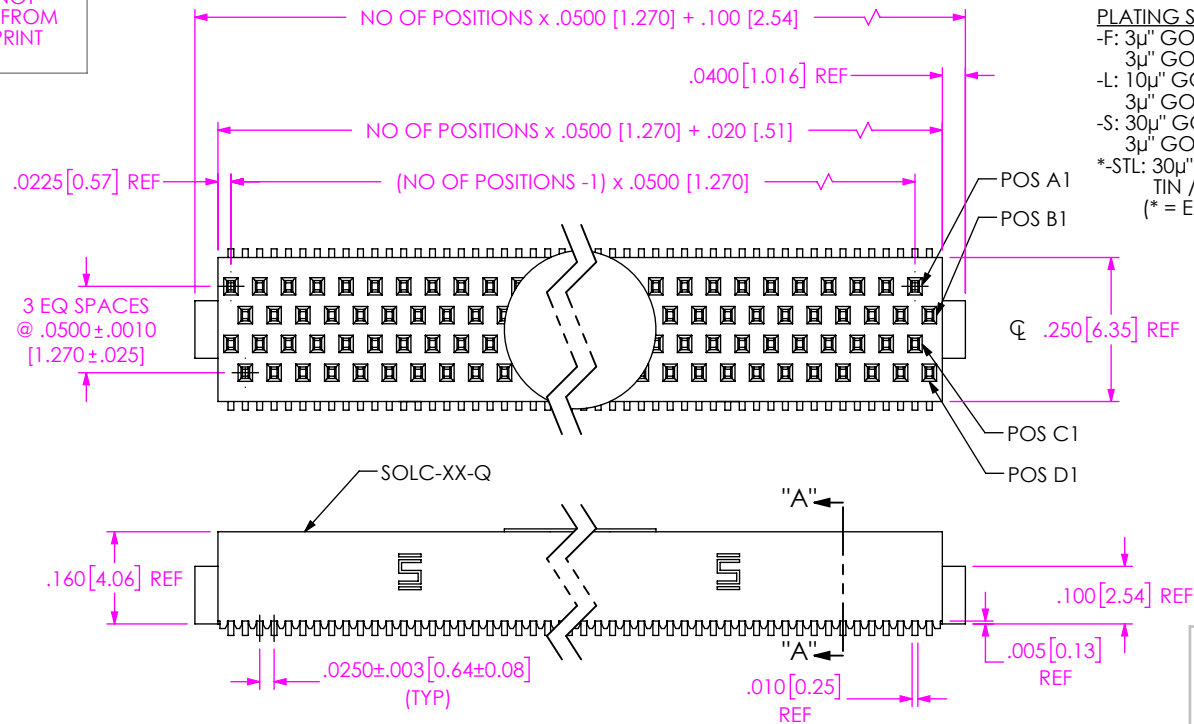
DO NOT  
SCALE FROM  
THIS PRINT

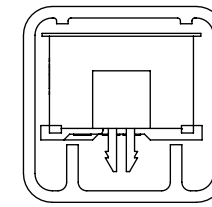
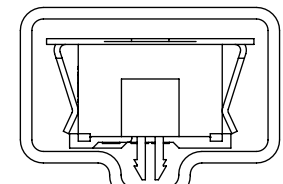
FIG 1

## NOTES:

1. MINIMUM PUSHOUT FORCE: .5LB
2. PARTS TO BE PACKAGED IN TUBES.
3. Ⓢ INDICATES A CRITICAL DIMENSION.
4. -S PLATING CAN BE SUBSTITUTED FOR -L & -F PLATING.
5. DUE TO THE HIGH AMOUNT OF INSERTION FORCE NEEDED, THE -LC OPTION IS NOT COMPATIBLE WITH AUTO PLACEMENT. SAMTEC RECOMMENDS MANUAL PLACEMENT FOR ALL ASSEMBLIES WITH THE -LC OPTION.
6. INSULATOR MATERIAL: LCP, UL 94 V0
7. COPLANARITY:  
-05 THRU -30 POSITION: .0040 [0.102]  
-35 THRU -50 POSITION: .0060 [0.152]

## PACKAGING VIEW

TABLE		
NO OPTION, -LC, -A, -K, -K-LC, -K-A	PT-1-24-11-63	TP-09
-P, -P-LC, -P-A	PT-1-24-01-61	TP-03

PT-1-24-11-63 TUBE  
TP-09 PLUGPT-1-24-01-61 TUBE  
TP-03 PLUGUNLESS OTHERWISE SPECIFIED,  
DIMENSIONS ARE IN INCHES.

TOLERANCES ARE:

DECIMALS ANGLES  
.XX: ±.01 [0.3] 5°  
.XXX: ±.005 [0.13]  
.XXXX: ±.0020 [0.051]

## PROPRIETARY NOTE

THIS DOCUMENT CONTAINS INFORMATION  
CONFIDENTIAL AND PROPRIETARY TO  
SAMTEC, INC. AND SHALL NOT BE REPRODUCED  
OR TRANSFERRED TO OTHER DOCUMENTS OR  
DISCLOSED TO OTHERS OR USED FOR ANY  
PURPOSE OTHER THAN THAT WHICH IT WAS  
OBTAINED WITHOUT THE EXPRESSED WRITTEN  
CONSENT OF SAMTEC, INC.

MATERIAL:  
INSULATOR: VECTRA E130I, COLOR: BLACK  
CONTACT: PHOS BRONZE

MAX FLASH ALLOWED: .002 [0.05]  
MAX GATE VESTIGE: .002 [0.05]

F:\DWG\MISC\MKTG\SOLC-1XX-XX-XXX-Q-XX-MKT.SLDDRW

DO NOT SCALE DRAWING

SHEET SCALE: 3:1

DESCRIPTION:  
QUAD ROW STAGGERED SMT SOCKET ASM

DWG. NO.

SOLC-1XX-XX-XXX-Q-XX

BY: TIM P.

2/11/2013

SHEET 1 OF 2

**samtec**

520 PARK EAST BLVD, NEW ALBANY, IN 47150  
PHONE: 812-944-6733 FAX: 812-948-5047  
e-Mail: info@SAMTEC.com code 55322

FIG 2  
-LC OPTION  
(DIFFERENT AS SHOWN, OTHER WISE SAME AS FIG 1)

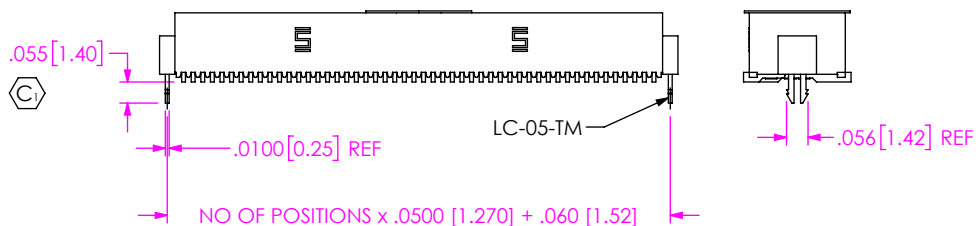


FIG 3  
-A MOLDED  
(DIFFERENT AS SHOWN, OTHER WISE SAME AS FIG 1)

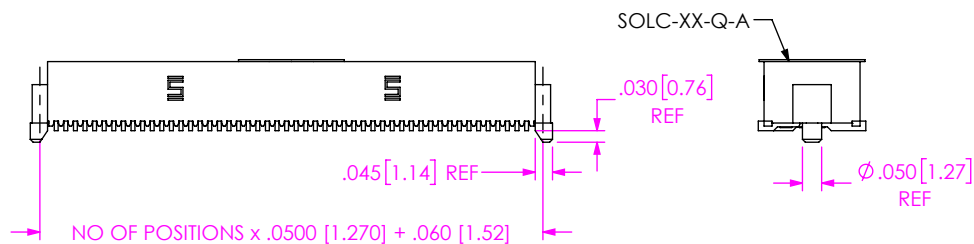


FIG 4  
-P OPTION  
(DIFFERENT AS SHOWN, OTHER WISE SAME AS FIG 1)

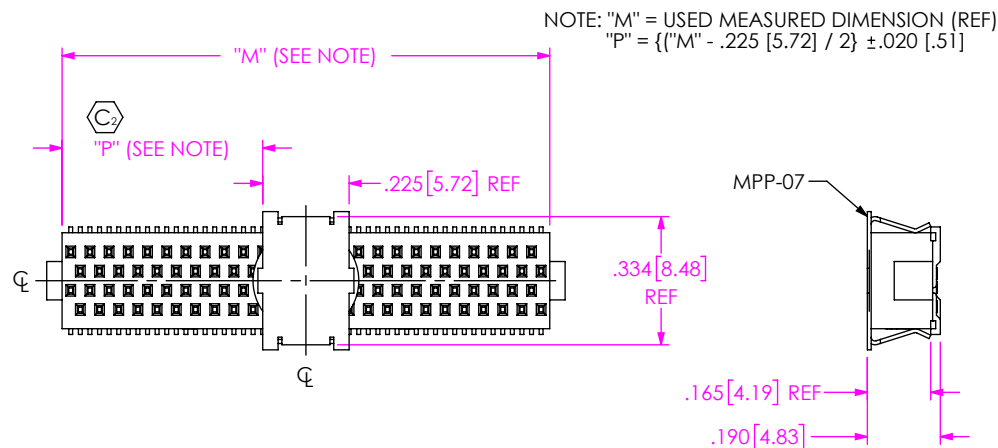
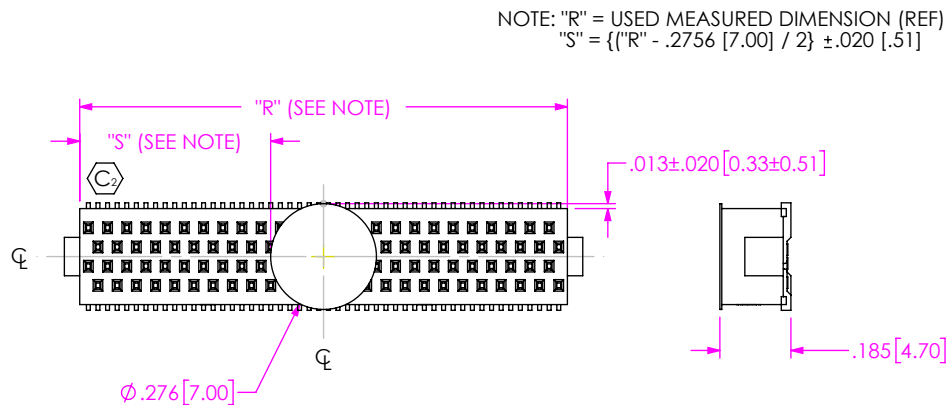


FIG 5  
-P POLYIMIDE FILM PAD  
(DIFFERENT AS SHOWN, OTHER WISE SAME AS FIG 1)



PROPRIETARY NOTE  
THIS DOCUMENT CONTAINS INFORMATION  
CONFIDENTIAL AND PROPRIETARY TO  
SAMTEC, INC. AND SHALL NOT BE REPRODUCED  
OR TRANSFERRED TO OTHER DOCUMENTS OR  
DISCLOSED TO OTHERS OR USED FOR ANY  
PURPOSE OTHER THAN THAT WHICH IT WAS  
OBTAINED WITHOUT THE EXPRESSED WRITTEN  
CONSENT OF SAMTEC, INC.

DO NOT SCALE DRAWING

SHEET SCALE: 2:1

**samtec**

520 PARK EAST BLVD, NEW ALBANY, IN 47150  
PHONE: 812-944-6733 FAX: 812-948-5047  
e-Mail: info@SAMTEC.com code 55322

DESCRIPTION:  
QUAD ROW STAGGERED SMT SOCKET ASM

DWG. NO.  
**SOLC-1XX-XX-XXX-Q-XX**

BY: TIM P. 2/11/2013 SHEET 2 OF 2

# Mouser Electronics

Authorized Distributor

Click to View Pricing, Inventory, Delivery & Lifecycle Information:

[Samtec:](#)

[SOLC-105-02-F-Q-A-K](#) [SOLC-125-02-L-Q-K-TR](#) [SOLC-105-02-L-Q-A-K](#) [SOLC-140-02-L-Q-LC-K](#) [SOLC-115-02-F-Q-A-P](#) [SOLC-110-02-F-Q-K-TR](#) [SOLC-150-02-L-Q-A-K-TR](#) [SOLC-110-02-L-Q-A-P-TR](#)