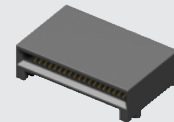
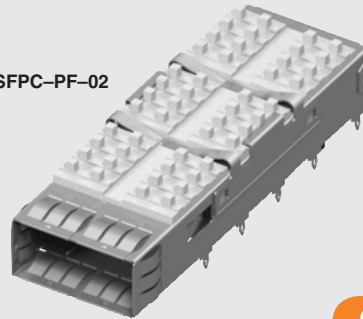


QSFP8-PF-02



QSFP8-038-01-L-D-RA1

(0,80 mm) .0315"

QSFP8, QSFP8, QSFP8 SERIES

QSFP CONNECTOR & CAGE

Mates with:

QSFP8

SPECIFICATIONS

For complete specifications and recommended PCB layouts see www.samtec.com/QSFP8

Insulator Material:

LCP

Contact Material:

Phosphor Bronze

Ground Plane:

Phosphor Bronze

Plating:

Au or Sn over 50µ" (1.27 µm) Ni

Current Rating (QSFP8/Card):

1.6 A per pin

(1 pin powered per row)

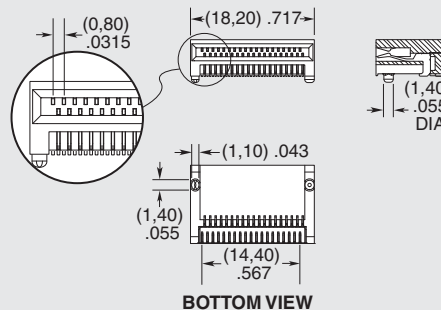
RECOGNITIONS

For complete scope of recognitions see www.samtec.com/quality



Note: Some lengths, styles and options are non-standard, non-returnable.

| QSFP8 | NO. OF POSITIONS | CARD THICKNESS | PLATING | D | RA1 |
|-------|-------------------------------------|-------------------------------------|---------|---|-----|
| | -038 = Total Number of Positions | -01 = (1,00 mm) .039" thick card | | -L = 10µ" (0,25 µm) Gold on contact, Matte Tin on tail | |



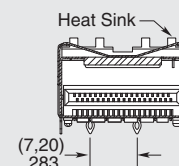
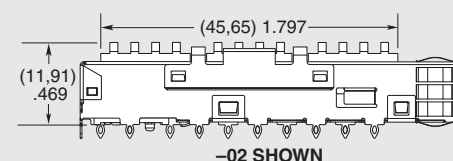
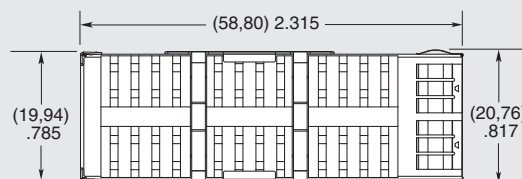
Use with: QSFP8

SPECIFICATIONS

For complete specifications see www.samtec.com/QSFP8 or www.samtec.com/QSFP8

| TYPE | TERMINATION | OPTION |
|-----------------------------------|--------------------|--|
| QSFP8 = Cage | -PF = Press Fit | -01 = Without Heat Sink |
| QSFP8 = Cage and Connector Kit | | -02 = With Heat Sink |
| | | -03 = With Heat Sink and clip packaged separately (Recommended for cage press fit processing) |

APPLICATION



Note: Some sizes, styles and options are non-standard, non-returnable.

Mouser Electronics

Authorized Distributor

Click to View Pricing, Inventory, Delivery & Lifecycle Information:

[Samtec:](#)

[QSFPK-PF-01](#) [QSFPK-PF-02](#)