

DO NOT  
SCALE FROM  
THIS PRINT

DESIGNED & DIMENSIONED  
IN MILLIMETERS[INCHES]

S1SSX-XX-XXX-XX-XX.XX-X-XXX

FEP CABLE OPTION

-T: FEP INSULATION  
LEAVE BLANK FOR PVC  
(SEE NOTE 8)

NO OF POSITIONS

-02, -03, -05, -07, -10, -15, -20  
(PER ROW) AVAILABLE AS STANDARD  
-02 THRU -20 AVAILABLE AS ASO

WIRE GAUGE (AWG)

-28, -30

COLOR CODE

-C: COLOR CODE WIRE  
(SEE TABLE 3, SHEET 2)

LEAVE BLANK FOR STANDARD WIRE  
(SEE TABLE 1)

NOT AVAILABLE WITH S1SST

OPTION

DOUBLE

(MUST BE USED ON -D END OPTION ONLY  
& APPLIES TO END 2 HOUSING)  
-NUS: NO LATCH, "N" UP, STRAIGHT  
-NDS: NO LATCH, "N" DOWN, STRAIGHT

END OPTION

-S: SINGLE END  
-D: DOUBLE END

ASSEMBLED LENGTH

(SPECIFY IN INCHES)  
01.80 IN MINIMUM

PLATING SPECIFICATION

-T: TIN PLATING  
-GF: 3u" MIN Au/50u" Ni  
IN CONTACT AND TAIL

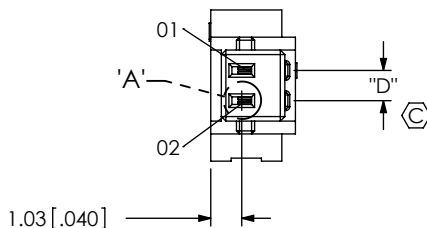
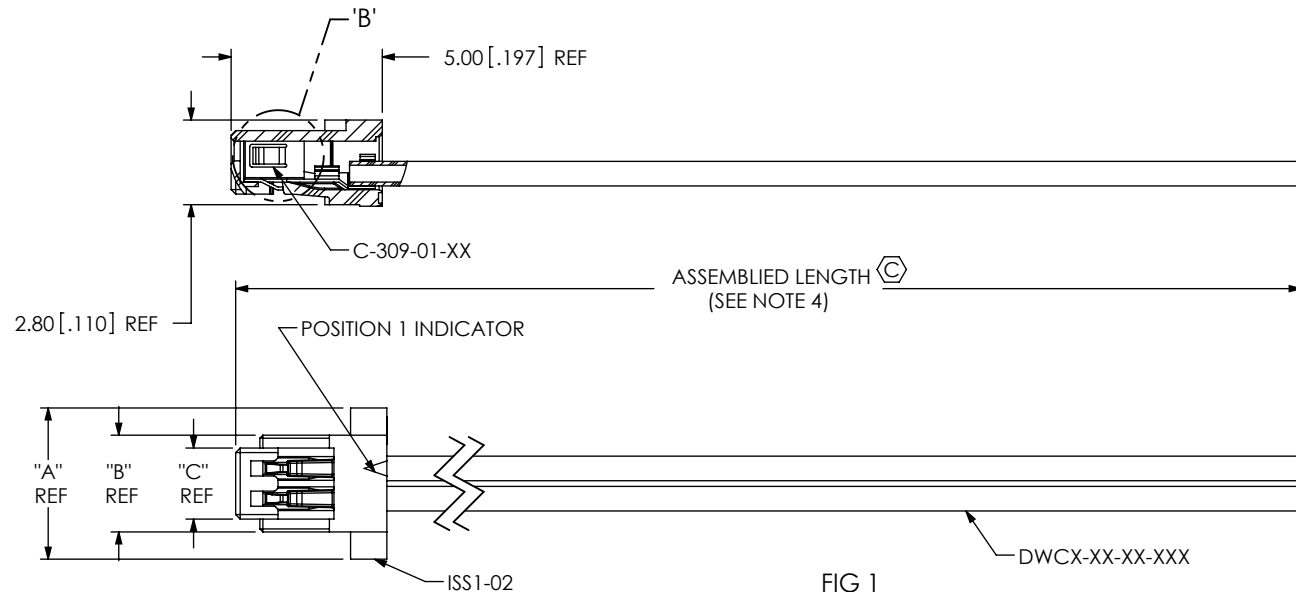
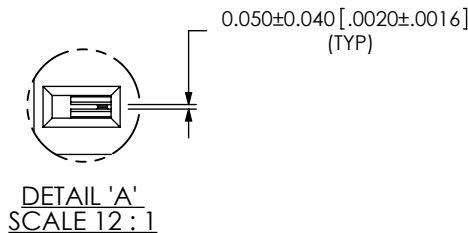
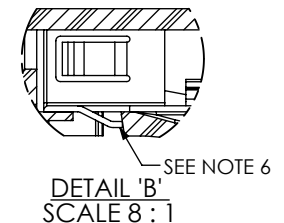


TABLE 1	
WIRE GAUGE	WIRE PART NUMBER
-28	DWC-28-10-300
-30	DWC-30-10-300
-28	DWCT-28-01-TC
-30	DWCT-30-01-TC



NOTES:

- ⊗ REPRESENTS A CRITICAL DIMENSION.
- MINIMUM PUSHOUT FORCE: SIGNAL: 6.6N[1.5 LB]
- PARTS TO BE PACKAGED IN BAG.
- FOR ASSEMBLED LENGTHS LESS THAN 13.00 IN, TOLERANCE SHALL BE  $\pm .125[3.18]$ , FOR OTHER LENGTHS, TOLERANCE SHALL BE  $\pm 2\%$ .
- REFER TO CRIMP SPECIFICATIONS FOR CRIMP AND STRIP DIMENSIONS, TOLERANCES, TOOLING, AND ITS REQUIREMENTS.
- ⊗ 6. CONTACT MUST BE INSERTED UNTIL RETENTION FEATURE LOCKS IN PLACE.
- ⊗ 7. ALL FINISHED GOODS ARE TO BE ELECTRICALLY TESTED INCLUDING HI-POT TEST AT 1000 VOLTS DC. AFTER FINAL ELECTRICAL TEST, LABEL EACH ASSEMBLY WITH (1) ET STAMP ON THE BODY.
- SINGLE ENDED ASSEMBLIES USING THE FEP OPTION ARE FOR CRIMP APPLICATIONS ONLY.

UNLESS OTHERWISE SPECIFIED,  
DIMENSIONS ARE IN MILLIMETERS.

TOLERANCES ARE:

DECIMALS ANGLES  
X.X:  $\pm 0.3$  [.01] 2°  
X.XX:  $\pm 0.13$  [.005]  
X.XXX:  $\pm 0.051$  [.0020]

PROPRIETARY NOTE

THIS DOCUMENT CONTAINS INFORMATION  
CONFIDENTIAL AND PROPRIETARY TO  
SAMTEC, INC. AND SHALL NOT BE REPRODUCED  
OR TRANSFERRED TO OTHER DOCUMENTS OR  
DISCLOSED TO OTHERS OR USED FOR ANY  
PURPOSE OTHER THAN THAT WHICH IT WAS  
OBTAINED WITHOUT THE EXPRESSED WRITTEN  
CONSENT OF SAMTEC, INC.

MATERIAL: DO NOT SCALE DRAWING  
INSULATOR: PPA UL 94-V0, COLOR: BLACK  
CONTACT: PHOS BRONZE

SHEET SCALE: 6:1

**samtec**

520 PARK EAST BLVD, NEW ALBANY, IN 47150  
PHONE: 812-944-6733 FAX: 812-948-5047  
e-Mail: info@SAMTEC.com code 55322

DESCRIPTION:

1MM CABLE ASSEMBLY

DWG. NO.

S1SSX-XX-XXX-XX-XX.XX-X-XXX

BY: VICKY Z

04/13/2010

SHEET 1 OF 2

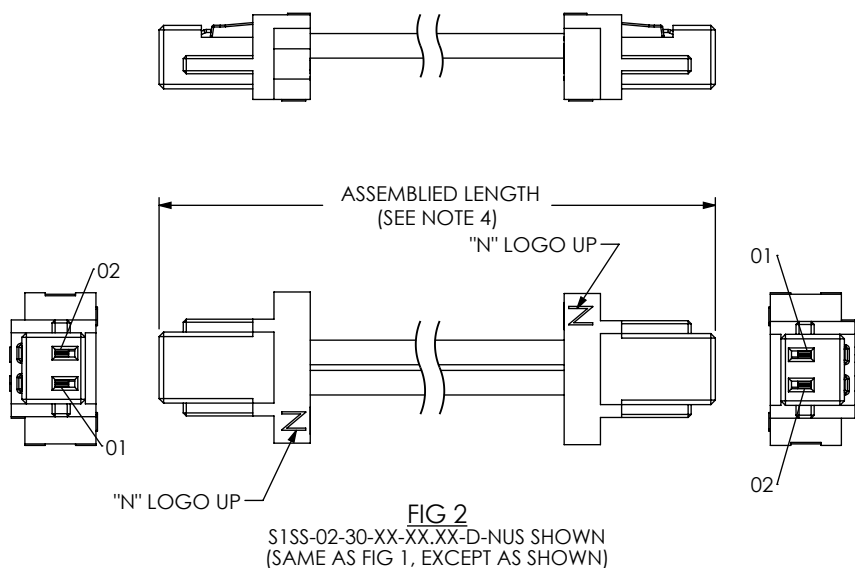


FIG 2  
S1SS-02-30-XX-XX-XX-D-NUS SHOWN  
(SAME AS FIG 1, EXCEPT AS SHOWN)

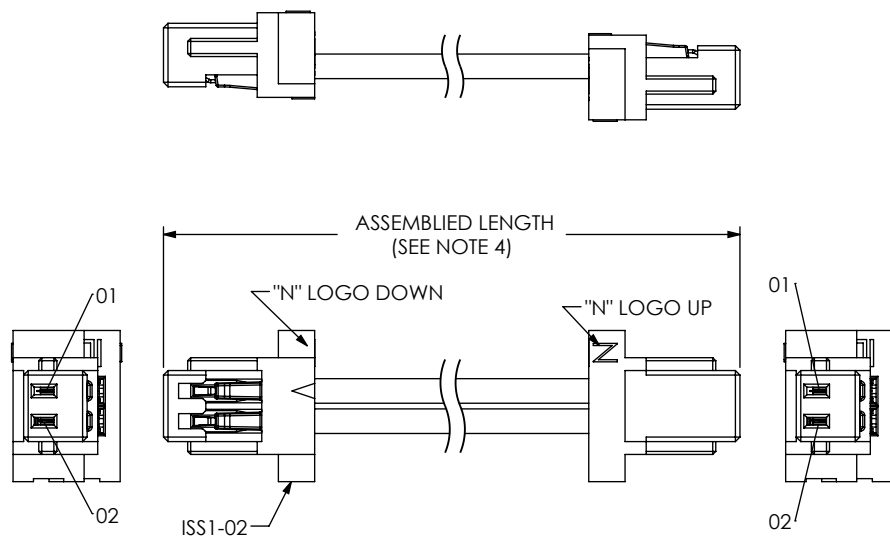


FIG 3  
S1SS-02-30-XX-XX-XX-D-NDS SHOWN  
(SAME AS FIG 1, EXCEPT AS SHOWN)

TABLE 2

No. OF POS	"A"	"B"	"C"	"D"
-02	5.00 [0.197]	3.200 [0.1260]	2.350 [0.0925]	1.000 [0.0394]
-03	6.00 [0.236]	4.200 [0.1654]	3.350 [0.1319]	2.000 [0.0787]
-04	7.00 [0.276]	5.200 [0.2047]	4.350 [0.1713]	3.000 [0.1181]
-05	8.00 [0.315]	6.200 [0.2441]	5.350 [0.2106]	4.000 [0.1575]
-06	9.00 [0.354]	7.200 [0.2835]	6.350 [0.2500]	5.000 [0.1969]
-07	10.00 [0.394]	8.200 [0.3228]	7.350 [0.2894]	6.000 [0.2362]
-08	11.00 [0.433]	9.200 [0.3622]	8.350 [0.3287]	7.000 [0.2756]
-09	12.00 [0.472]	10.200 [0.4016]	9.350 [0.3681]	8.000 [0.3150]
-10	13.00 [0.512]	11.200 [0.4409]	10.350 [0.4075]	9.000 [0.3543]
-11	14.00 [0.551]	12.200 [0.4803]	11.350 [0.4469]	10.000 [0.3937]
-12	15.00 [0.591]	13.200 [0.5197]	12.350 [0.4862]	11.000 [0.4331]
-13	16.00 [0.630]	14.200 [0.5591]	13.350 [0.5256]	12.000 [0.4724]
-14	17.00 [0.669]	15.200 [0.5984]	14.350 [0.5650]	13.000 [0.5118]
-15	18.00 [0.709]	16.200 [0.6378]	15.350 [0.6043]	14.000 [0.5512]
-16	19.00 [0.748]	17.200 [0.6772]	16.350 [0.6437]	15.000 [0.5906]
-17	20.00 [0.787]	18.200 [0.7165]	17.350 [0.6831]	16.000 [0.6299]
-18	21.00 [0.827]	19.200 [0.7559]	18.350 [0.7224]	17.000 [0.6693]
-19	22.00 [0.866]	20.200 [0.7953]	19.350 [0.7618]	18.000 [0.7087]
-20	23.00 [0.906]	21.200 [0.8346]	20.350 [0.8012]	19.000 [0.7480]

TABLE 3

S1SX COLOR CODED WIRE SEQUENCE

PIN#	COLOR									
	BROWN	RED	ORANGE	YELLOW	GREEN	DARK BLUE	VIOLET	GRAY	WHITE	BLACK
1	2	3	4	5	6	7	8	9	10	
11	12	13	14	15	16	17	18	19	20	
28 AWG WIRE	DWC-28-01-300	DWC-28-02-300	DWC-28-03-300	DWC-28-04-300	DWC-28-05-300	DWC-28-06-300	DWC-28-07-300	DWC-28-08-300	DWC-28-09-300	DWC-28-10-300
30 AWG WIRE	DWC-30-01-300	DWC-30-02-300	DWC-30-03-300	DWC-30-04-300	DWC-30-05-300	DWC-30-06-300	DWC-30-07-300	DWC-30-08-300	DWC-30-09-300	DWC-30-10-300

## PROPRIETARY NOTE

THIS DOCUMENT CONTAINS INFORMATION CONFIDENTIAL AND PROPRIETARY TO SAMTEC, INC. AND SHALL NOT BE REPRODUCED OR TRANSFERRED TO OTHER DOCUMENTS OR DISCLOSED TO OTHERS OR USED FOR ANY PURPOSE OTHER THAN THAT WHICH IT WAS OBTAINED WITHOUT THE EXPRESSED WRITTEN CONSENT OF SAMTEC, INC.

DO NOT SCALE DRAWING

SHEET SCALE: 4:1

**samtec**

520 PARK EAST BLVD, NEW ALBANY, IN 47150  
PHONE: 812-944-6733 FAX: 812-948-5047  
e-Mail: info@SAMTEC.com code 55322

DESCRIPTION:

1MM CABLE ASSEMBLY

DWG. NO.

S1SSX-XX-XXX-XX-XX.XX-X-XXX

BY: VICKY Z 04/13/2010 SHEET 2 OF 2

# Mouser Electronics

Authorized Distributor

Click to View Pricing, Inventory, Delivery & Lifecycle Information:

Samtec:

[S1SST-20-28-GF-01.80-D-NUS](#) [S1SST-05-28-GF-01.80-D-NUS](#) [S1SST-20-28-GF-01.80-S](#)