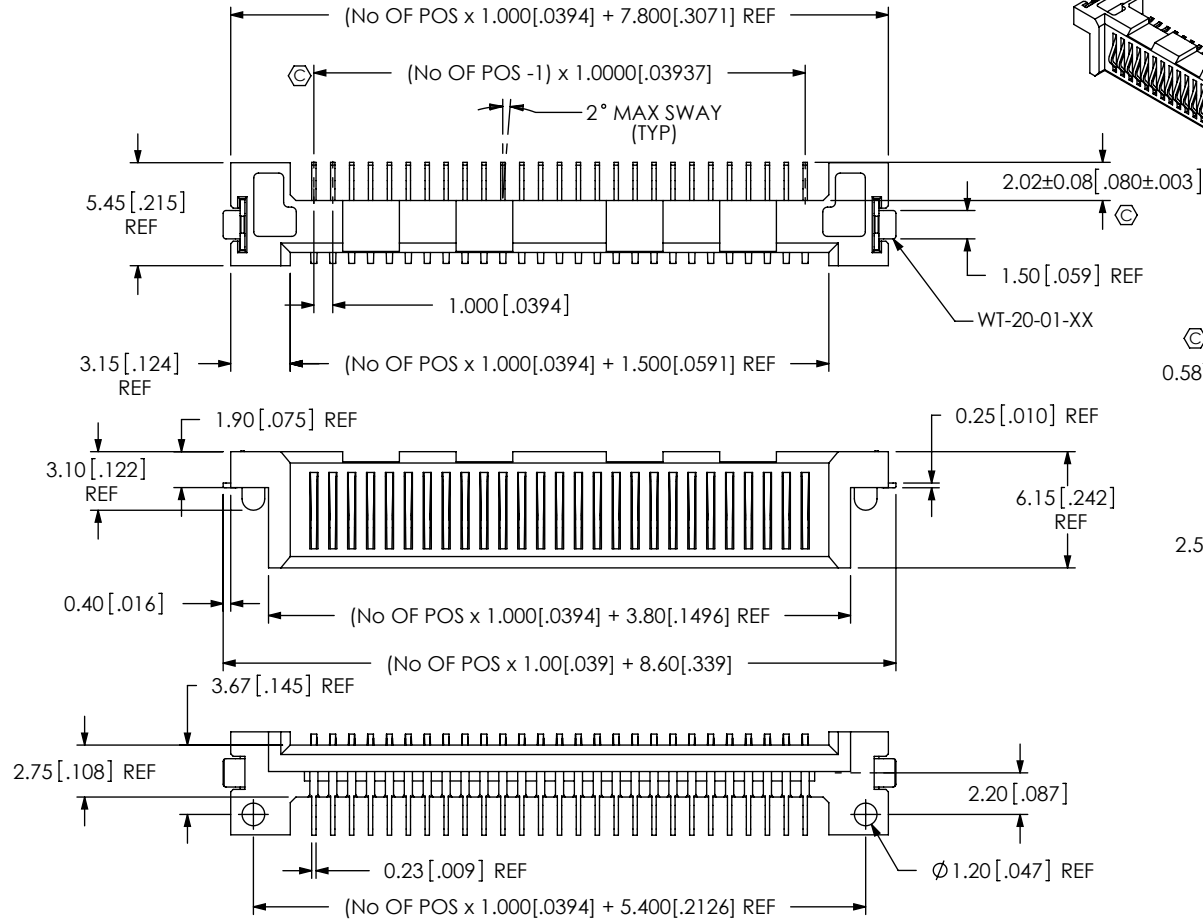


NOTES:

1.  $\odot$  REPRESENTS A CRITICAL DIMENSION.
2. BURR ALLOWANCE: .038[.0015] MAX.
3. MINIMUM PUSHOUT FORCE: .5 LB.
4. MAXIMUM ALLOWABLE BOW: .05[.002] INCH/INCH AFTER ASSEMBLY.
5. PARTS TO BE PACKAGED IN TUBES.
6. INCLUDES CONTACTS AND WELD TABS.
7. DIMENSION APPLIES FROM LINE FORMED BY BODY TO BOTH THE WELD TAB AND THE SOLDER TAIL. WELD TAB AND SOLDER TAIL MAY BE ABOVE OR BELOW LINE FORMED BY BODY.

DO NOT  
SCALE FROM  
THIS PRINT

DESIGNED & DIMENSIONED  
IN MILLIMETERS[INCHES]



SAL1-1XX-XX-XX-S-A-XX

No OF POSITIONS  
-20, -27, -30, & -40

LEAD STYLE  
-01:  
(USE C-192-03-XX)

OPTIONS  
-TR: TAPE & REEL (SEE FIG 3, SHT 2)  
(REQUIRED FOR NEW CUSTOMERS)  
-K: KAPTON PAD  
(SEE FIG 2, SHT 2)

ALIGNMENT PIN

ROW SPECIFICATION  
-S: SINGLE (USE SAL1-XX-S-A)

PLATING SPECIFICATION  
-S: 30μ" SELECTIVE GOLD IN CONTACT  
AREA, MATTE TIN ON TAIL.  
(USE C-192-03-S & WT-20-01-T)  
-H: 30μ" GOLD IN CONTACT AREA,  
3μ" GOLD ON TAIL.  
(USE C-192-03-H & WT-20-01-T)  
-SM: 30μ" SELECTIVE GOLD IN CONTACT  
AREA, MATTE TIN ON TAIL.  
(USE C-192-03-S & WT-20-01-TM)

$\odot$   
0.58<sup>+0.13</sup><sub>-0.08</sub> [.023<sup>+0.005</sup><sub>-.003</sub>]

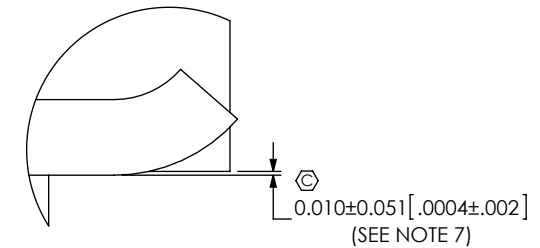
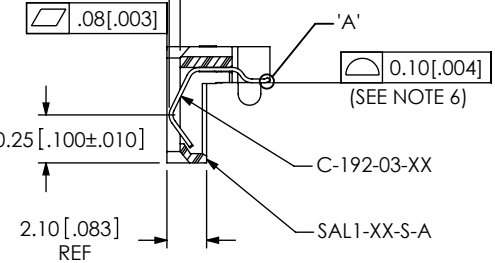
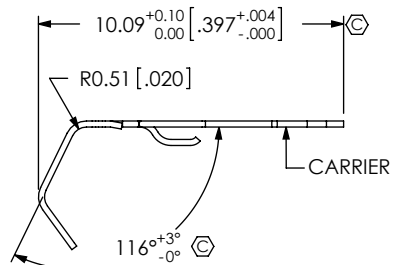


FIG 1  
SAL1-127-01-XX-S-A SHOWN

DETAIL 'A'  
SCALE 50:1



IN-PROCESS

UNLESS OTHERWISE SPECIFIED,  
DIMENSIONS ARE IN MILLIMETERS.

TOLERANCES ARE:

DECIMALS ANGLES  
.X: ±.3 [.01] 2°  
.XX: ±.13 [.005]  
.XXX: ±.051 [.0020]

PROPRIETARY NOTE

THIS DOCUMENT CONTAINS INFORMATION  
CONFIDENTIAL AND PROPRIETARY TO  
SAMTEC, INC. AND SHALL NOT BE REPRODUCED  
OR TRANSFERRED TO OTHER DOCUMENTS OR  
DISCLOSED TO OTHERS OR USED FOR ANY  
PURPOSE OTHER THAN THAT WHICH IT WAS  
OBTAINED WITHOUT THE EXPRESSED WRITTEN  
CONSENT OF SAMTEC, INC.

MATERIAL: DO NOT SCALE DRAWING  
INSULATOR: LCP, COLOR: BLACK  
CONTACT: BeCu

SHEET SCALE: 2.5:1

**samtec**

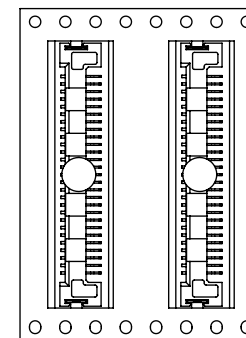
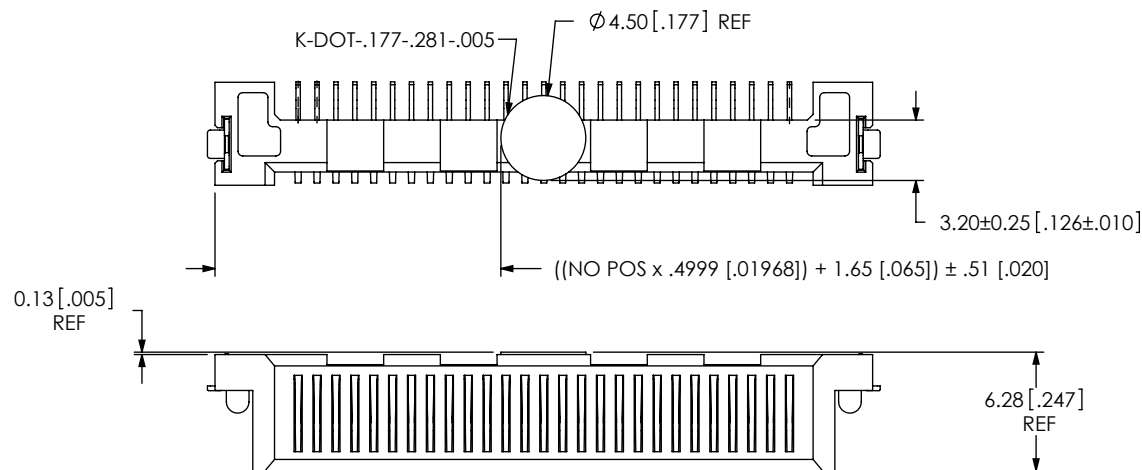
520 PARK EAST BLVD, NEW ALBANY, IN 47150  
PHONE: 812-944-6733 FAX: 812-948-5047  
e-Mail: info@SAMTEC.com code 55322

DESCRIPTION:  
1MM SERIAL ATA LINK CONNECTOR

DWG. NO.  
SAL1-1XX-XX-XX-S-A-XX

BY: DEAN P 09-23-2010 SHEET 1 OF 2

FIG 2  
SAL1-127-01-XX-S-A-K SHOWN  
SAME AS FIG 1 EXCEPT AS SHOWN



USER DIRECTION OF UN-REELING  
POCKET NOT DETAILED

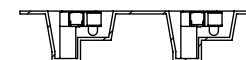
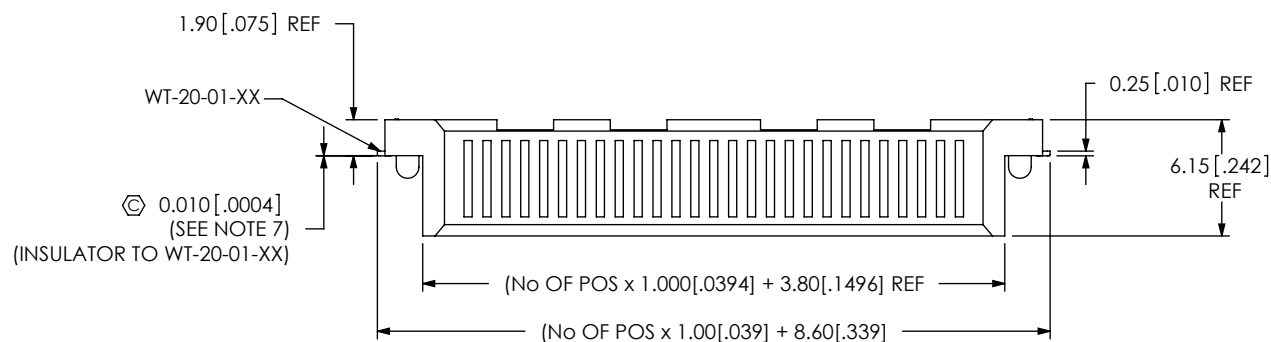
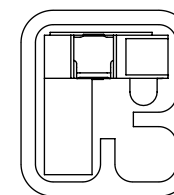


FIG 3  
T&R PACKAGING



SUB ASSEMBLY  
SUB-SAL1-127-01-XX-XX-S-A SHOWN  
(FILL WT-20-01-XX)  
(PARTS TO BE BULK PACKAGED)

EXISTING CUSTOMERS ONLY



TUBE PACKAGING  
TUBE: PT-1-24-01-144  
PLUG: TP-24-02

PROPRIETARY NOTE  
THIS DOCUMENT CONTAINS INFORMATION  
CONFIDENTIAL AND PROPRIETARY TO  
SAMTEC, INC. AND SHALL NOT BE REPRODUCED  
OR TRANSFERRED TO OTHER DOCUMENTS OR  
DISCLOSED TO OTHERS OR USED FOR ANY  
PURPOSE OTHER THAN THAT WHICH IT WAS  
OBTAINED WITHOUT THE EXPRESSED WRITTEN  
CONSENT OF SAMTEC, INC.

DO NOT SCALE DRAWING

SHEET SCALE: 2.5:1

**samtec**

520 PARK EAST BLVD, NEW ALBANY, IN 47150  
PHONE: 812-944-6733 FAX: 812-948-5047  
e-Mail: info@SAMTEC.com code 55322

DESCRIPTION:  
1MM SERIAL ATA LINK CONNECTOR

DWG. NO.  
SAL1-1XX-XX-XX-S-A-XX

BY: DEAN P 09-23-2010 SHEET 2 OF 2

# Mouser Electronics

Authorized Distributor

Click to View Pricing, Inventory, Delivery & Lifecycle Information:

[Samtec:](#)

[SAL1-127-01-H-S-A-TR](#)