

FIG 2  
(IJ5C-04-XXXX-S-D-NDS-1 SHOWN)  
(SAME AS FIG 1, EXCEPT AS SHOWN)  
(SHOWING SECOND END ORIENTATION -NDS)

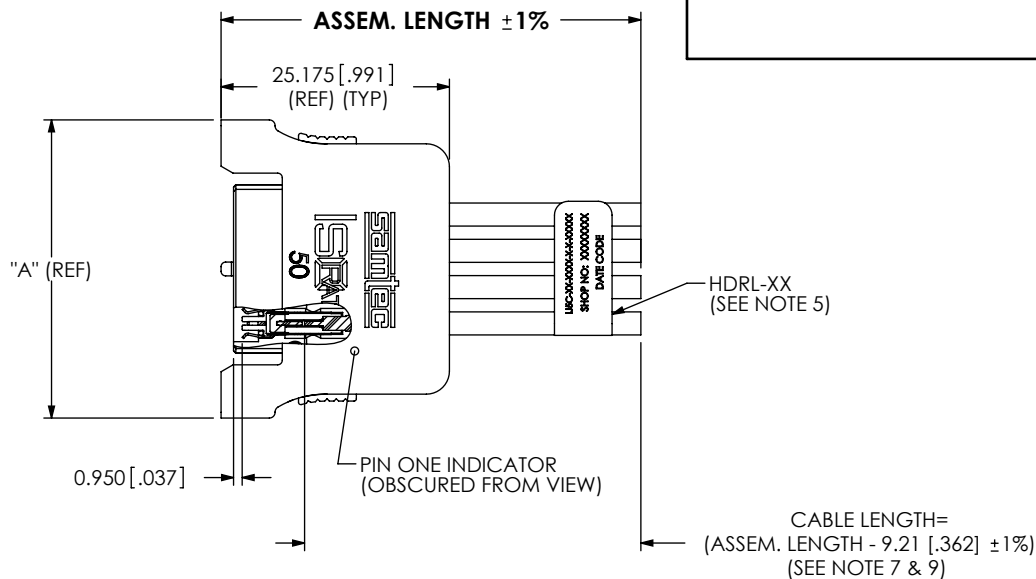


FIG 3  
(IJ5C-04-XXXX-S-S-1 SHOWN)  
(SAME AS FIG 1, EXCEPT AS SHOWN)

PROPRIETARY NOTE

THIS DOCUMENT CONTAINS INFORMATION CONFIDENTIAL AND PROPRIETARY TO SAMTEC, INC. AND SHALL NOT BE REPRODUCED OR TRANSFERRED TO OTHER DOCUMENTS OR DISCLOSED TO OTHERS OR USED FOR ANY PURPOSE OTHER THAN THAT WHICH IT WAS OBTAINED WITHOUT THE EXPRESSED WRITTEN CONSENT OF SAMTEC, INC.

DO NOT SCALE DRAWING

SHEET SCALE: 1:0.666667

**samtec**

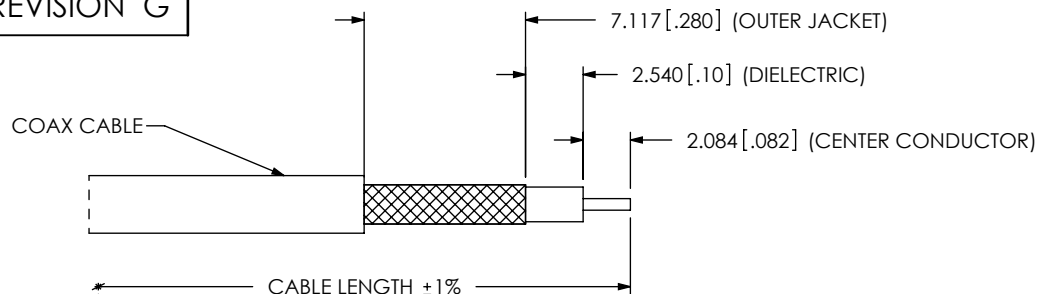
520 PARK EAST BLVD, NEW ALBANY, IN 47150  
PHONE: 812-944-6733 FAX: 812-948-5047  
e-Mail: info@SAMTEC.com code: 55322

DESCRIPTION:  
CABLE ASSEMBLY, IJ5C CONNECTOR

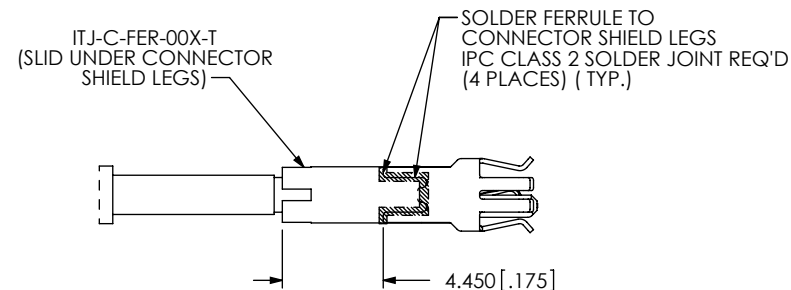
DWG. NO.  
IJ5C-XX-XXXX-X-X-XXX-X-XX

BY: KNOWLDEN 04/16/2008 SHEET 2 OF 4

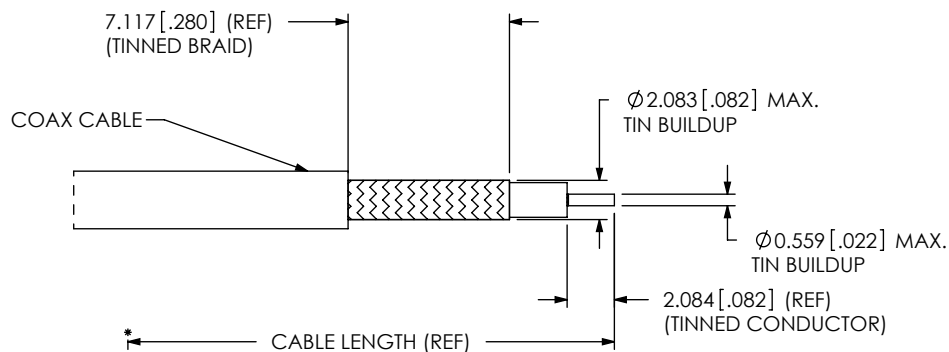
# REVISION G



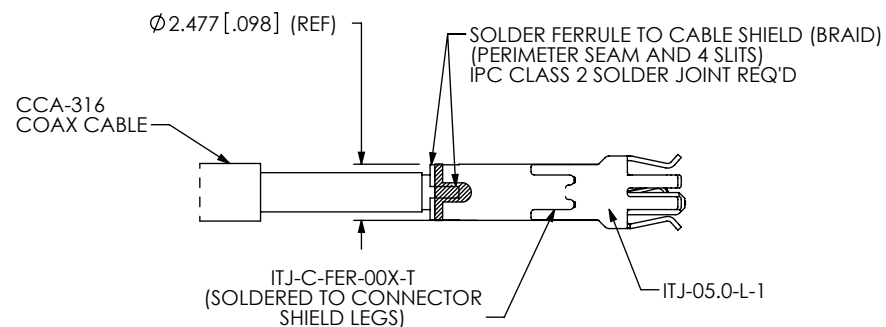
**IN-PROCESS STEP 1**  
(MEASURE AND STRIP CABLE)  
(SEE IJ5C CABLE TRAVELER FOR PREP INSTRUCTIONS)



**IN-PROCESS STEP 4**  
(POSITION & SOLDER ITJ-C-FER-00X-T TO CONNECTOR LEGS )

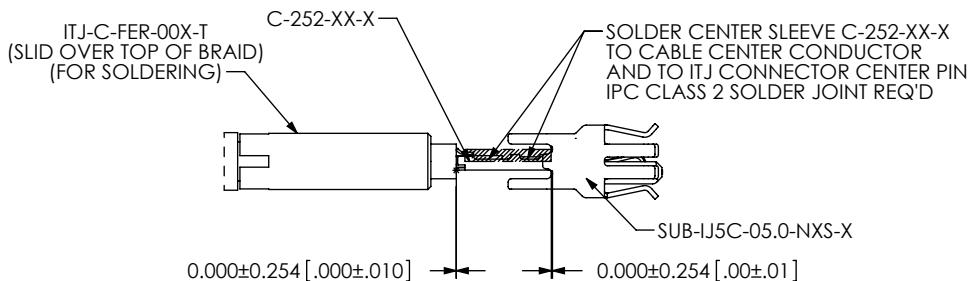


**IN-PROCESS STEP 2**  
(PRE-TIN BRAID & CONDUCTOR)  
(SEE IJ5C CABLE TRAVELER FOR PREP INSTRUCTIONS)



**IN-PROCESS STEP 5**  
(FINAL SOLDER ITJ-C-FER-00X-T TO TINNED BRAID )

## ORIENTING SUB-IJ5C-05.0-NXS-X



**IN-PROCESS STEP 3**  
(INSTALL & SOLDER SUB-IJ5C )

### PROPRIETARY NOTE

THIS DOCUMENT CONTAINS INFORMATION CONFIDENTIAL AND PROPRIETARY TO SAMTEC, INC. AND SHALL NOT BE REPRODUCED OR TRANSFERRED TO OTHER DOCUMENTS OR DISCLOSED TO OTHERS OR USED FOR ANY PURPOSE OTHER THAN THAT WHICH IT WAS OBTAINED WITHOUT THE EXPRESSED WRITTEN CONSENT OF SAMTEC, INC.

DO NOT SCALE DRAWING

SHEET SCALE: 1:1

**samtec**

520 PARK EAST BLVD, NEW ALBANY, IN 47150  
PHONE: 812-944-6733 FAX: 812-948-5047  
e-Mail: info@SAMTEC.com code: 55322

### DESCRIPTION:

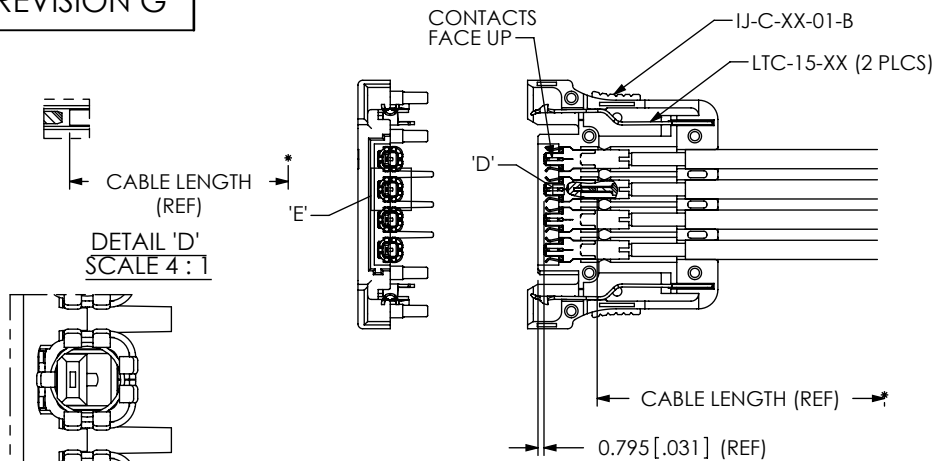
CABLE ASSEMBLY, IJ5C CONNECTOR

### DWG. NO.

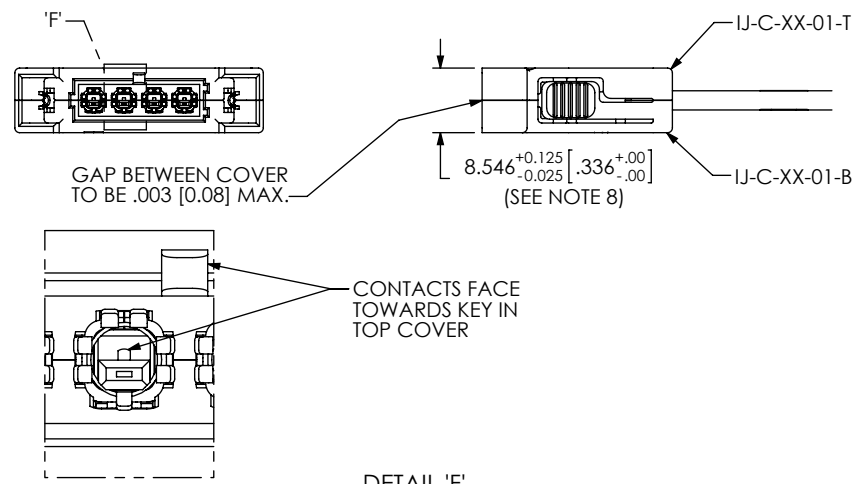
IJ5C-XX-XXXX-X-X-XXX-X-XX

BY: KNOWLDEN 04/16/2008 SHEET 3 OF 4

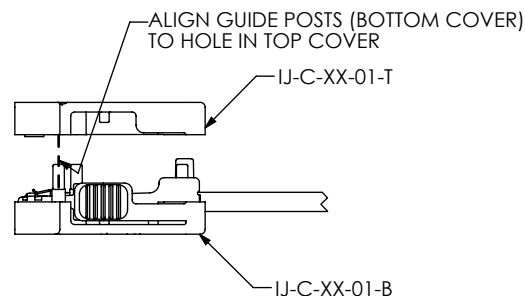
# REVISION G



IN-PROCESS STEP 6  
(FILL BOTTOM COVER HOUSING)



IN-PROCESS STEP 8  
(THERMO WELD COVERS)



IN-PROCESS STEP 7  
(ASSEMBLE TOP COVER HOUSING)

TABLE 2									
No. OF POS	END OPTION	CABLE TYPE		SUB	FERRULE	TOP HOUSING	BOTTOM HOUSING	LATCH	
		OPTION	CABLE NAME						
-01	-S	-1	CTB-2650F-01	SUB-IJ5C-05.0-NXS-XXX	ITJ-C-FER-001-T	IJ-C-01-01-T	IJ-C-01-01-B	LTC-15-01	
		-2	CCA-316		ITJ-C-FER-002-T				
	-D	-1	CTB-2650F-01	SUB-IJ5C-05.0-NXS-XXX	ITJ-C-FER-001-T	IJ-C-01-01-T	IJ-C-01-01-B	LTC-15-01	
		-2	CCA-316		ITJ-C-FER-002-T				
-02	-S	-1	CTB-2650F-01	SUB-IJ5C-05.0-NXS-XXX	ITJ-C-FER-001-T	IJ-C-02-01-T	IJ-C-02-01-B	LTC-15-01	
		-2	CCA-316		ITJ-C-FER-002-T				
	-D	-1	CTB-2650F-01	SUB-IJ5C-05.0-NXS-XXX	ITJ-C-FER-001-T	IJ-C-02-01-T	IJ-C-02-01-B	LTC-15-01	
		-2	CCA-316		ITJ-C-FER-002-T				
-04	-S	-1	CTB-2650F-01	SUB-IJ5C-05.0-NXS-XXX	ITJ-C-FER-001-T	IJ-C-04-01-T	IJ-C-04-01-B	LTC-15-01	
		-2	CCA-316		ITJ-C-FER-002-T				
	-D	-1	CTB-2650F-01	SUB-IJ5C-05.0-NXS-XXX	ITJ-C-FER-001-T	IJ-C-04-01-T	IJ-C-04-01-B	LTC-15-01	
		-2	CCA-316		ITJ-C-FER-002-T				
-06	-S	-1	CTB-2650F-01	SUB-IJ5C-05.0-NXS-XXX	ITJ-C-FER-001-T	IJ-C-06-01-T	IJ-C-06-01-B	LTC-15-01	
		-2	CCA-316		ITJ-C-FER-002-T				
	-D	-1	CTB-2650F-01	SUB-IJ5C-05.0-NXS-XXX	ITJ-C-FER-001-T	IJ-C-06-01-T	IJ-C-06-01-B	LTC-15-01	
		-2	CCA-316		ITJ-C-FER-002-T				
-08	-S	-1	CTB-2650F-01	SUB-IJ5C-05.0-NXS-XXX	ITJ-C-FER-001-T	IJ-C-08-01-T	IJ-C-08-01-B	LTC-15-01	
		-2	CCA-316		ITJ-C-FER-002-T				
	-D	-1	CTB-2650F-01	SUB-IJ5C-05.0-NXS-XXX	ITJ-C-FER-001-T	IJ-C-08-01-T	IJ-C-08-01-B	LTC-15-01	
		-2	CCA-316		ITJ-C-FER-002-T				
*-10	-S	-1	CTB-2650F-01	SUB-IJ5C-05.0-NXS-XXX	ITJ-C-FER-001-T	IJ-C-10-01-T	IJ-C-10-01-B	LTC-15-01	
		-2	CCA-316		ITJ-C-FER-002-T				
	-D	-1	CTB-2650F-01	SUB-IJ5C-05.0-NXS-XXX	ITJ-C-FER-001-T	IJ-C-10-01-T	IJ-C-10-01-B	LTC-15-01	
		-2	CCA-316		ITJ-C-FER-002-T				

(\* = NOT TOOLED)

## PROPRIETARY NOTE

THIS DOCUMENT CONTAINS INFORMATION CONFIDENTIAL AND PROPRIETARY TO SAMTEC, INC. AND SHALL NOT BE REPRODUCED OR TRANSFERRED TO OTHER DOCUMENTS OR DISCLOSED TO OTHERS OR USED FOR ANY PURPOSE OTHER THAN THAT WHICH IT WAS OBTAINED WITHOUT THE EXPRESSED WRITTEN CONSENT OF SAMTEC, INC.

DO NOT SCALE DRAWING

SHEET SCALE: 1:1

# samtec

520 PARK EAST BLVD, NEW ALBANY, IN 47150  
PHONE: 812-944-6733 FAX: 812-948-5047  
e-Mail: info@SAMTEC.com code: 55322

DESCRIPTION:  
CABLE ASSEMBLY, IJ5C CONNECTOR

DWG. NO.  
IJ5C-XX-XXXX-X-X-XXX-X-XX

BY: KNOWLDEN 04/16/2008 SHEET 4 OF 4

# Mouser Electronics

Authorized Distributor

Click to View Pricing, Inventory, Delivery & Lifecycle Information:

## Samtec:

[IJ5C-08-1000-S-D-NUS-1](#) [IJ5C-06-1000-S-D-NUS-1](#) [IJ5C-04-1000-S-D-NUS-1](#) [IJ5C-02-0100-S-D-NDS-1](#) [IJ5C-08-1000-S-D-NDS-1](#) [IJ5C-06-0400-S-D-NUS-2](#) [IJ5C-01-1000-S-D-NUS-2](#) [IJ5C-08-0400-S-D-NDS-2](#) [IJ5C-06-1000-S-D-NDS-1](#) [IJ5C-01-0100-S-D-NUS-1](#) [IJ5C-08-0400-S-D-NUS-1](#) [IJ5C-01-0400-S-D-NUS-2](#) [IJ5C-02-0100-S-D-NUS-1](#) [IJ5C-04-0400-S-D-NUS-1](#) [IJ5C-04-1000-S-D-NUS-2](#) [IJ5C-06-1000-S-D-NUS-2](#) [IJ5C-08-0400-S-D-NUS-2](#) [IJ5C-02-0400-S-D-NUS-2](#) [IJ5C-08-0100-S-D-NUS-1](#) [IJ5C-04-0400-S-D-NDS-2](#) [IJ5C-06-0100-S-D-NDS-1](#) [IJ5C-01-1000-S-D-NUS-1](#) [IJ5C-04-1000-S-D-NDS-1](#) [IJ5C-06-0400-S-D-NDS-2](#) [IJ5C-04-0100-S-D-NUS-1](#) [IJ5C-04-0100-S-D-NDS-1](#) [IJ5C-02-0400-S-D-NUS-1](#)