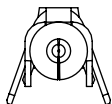


DO NOT
SCALE FROM
THIS PRINT



ALL DIMENSIONS ARE REFERENCE
(SEE T-1M74-X-XX-X FOR CONTROL PRINT)

T1M74-X-XX-X

SUPPLIED
-L: LOOSE
-R: REEL

PLATING SPECIFICATION
-F: FLASH SELECTIVE GOLD
-L: LIGHT SELECTIVE GOLD
-S: SELECTIVE GOLD

LEAD STYLE
-01: 26-30 AWG
-02: 20-24 AWG
-03: 28-30 AWG(PTFE/FEP)

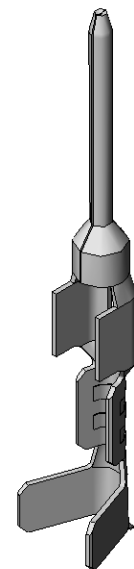
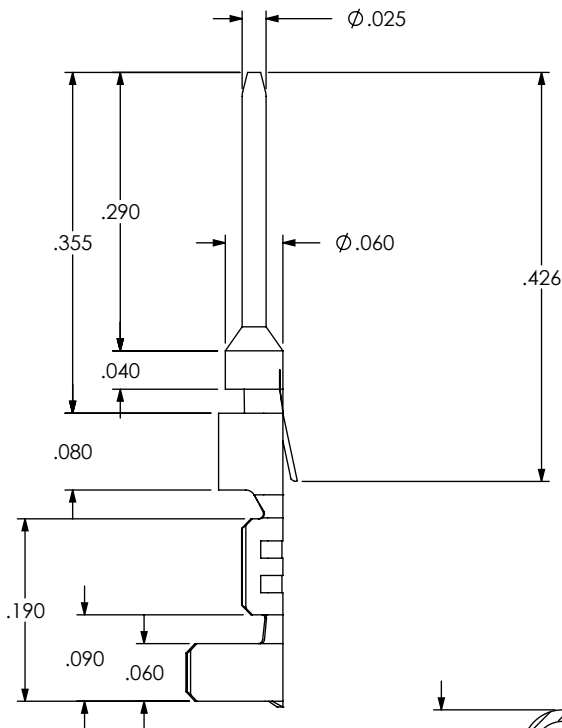
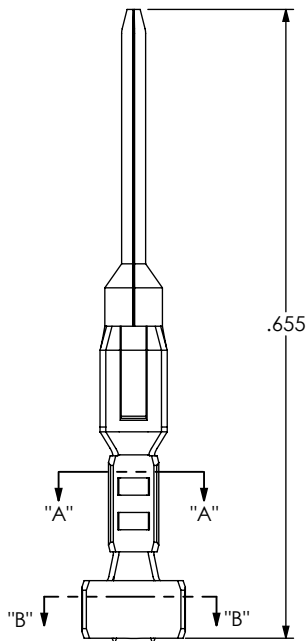
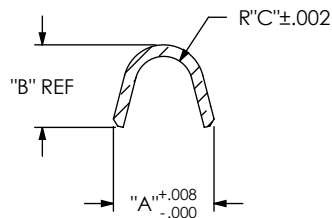
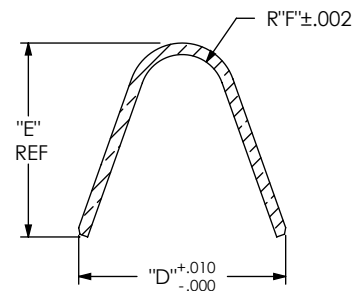


TABLE 1						
STYLE	"A"	"B"	"C"	"D"	"E"	"F"
-01	.052	.043	.015	.077	.071	.025
-02	.075	.065	.018	.108	.101	.030
-03	.052	.043	.015	.077	.055	.016



SECTION "A"- "A"
SCALE 10 : 1



SECTION "B"- "B"
SCALE 10 : 1

UNLESS OTHERWISE SPECIFIED,
DIMENSIONS ARE IN INCHES.
TOLERANCES ARE:
DECIMALS ANGLES
.XX: ±.01 2°
.XXX: ±.005
.XXXX: ±.0020

PROPRIETARY NOTE
THIS DOCUMENT CONTAINS INFORMATION
CONFIDENTIAL AND PROPRIETARY TO
SAMTEC, INC. AND SHALL NOT BE REPRODUCED
OR TRANSFERRED TO OTHER DOCUMENTS OR
DISCLOSED TO OTHERS OR USED FOR ANY
PURPOSE OTHER THAN THAT WHICH IT WAS
OBTAINED WITHOUT THE EXPRESSED WRITTEN
CONSENT OF SAMTEC, INC.

samtec

520 PARK EAST BLVD, NEW ALBANY, IN 47150
PHONE: 812-944-6733 FAX: 812-948-5047
e-Mail: info@SAMTEC.com code: 55322

MATERIAL: DO NOT SCALE DRAWING

THICKNESS: .0060 ±.0003

SHEET SCALE: 2:1

DESCRIPTION:

DWG. NO.

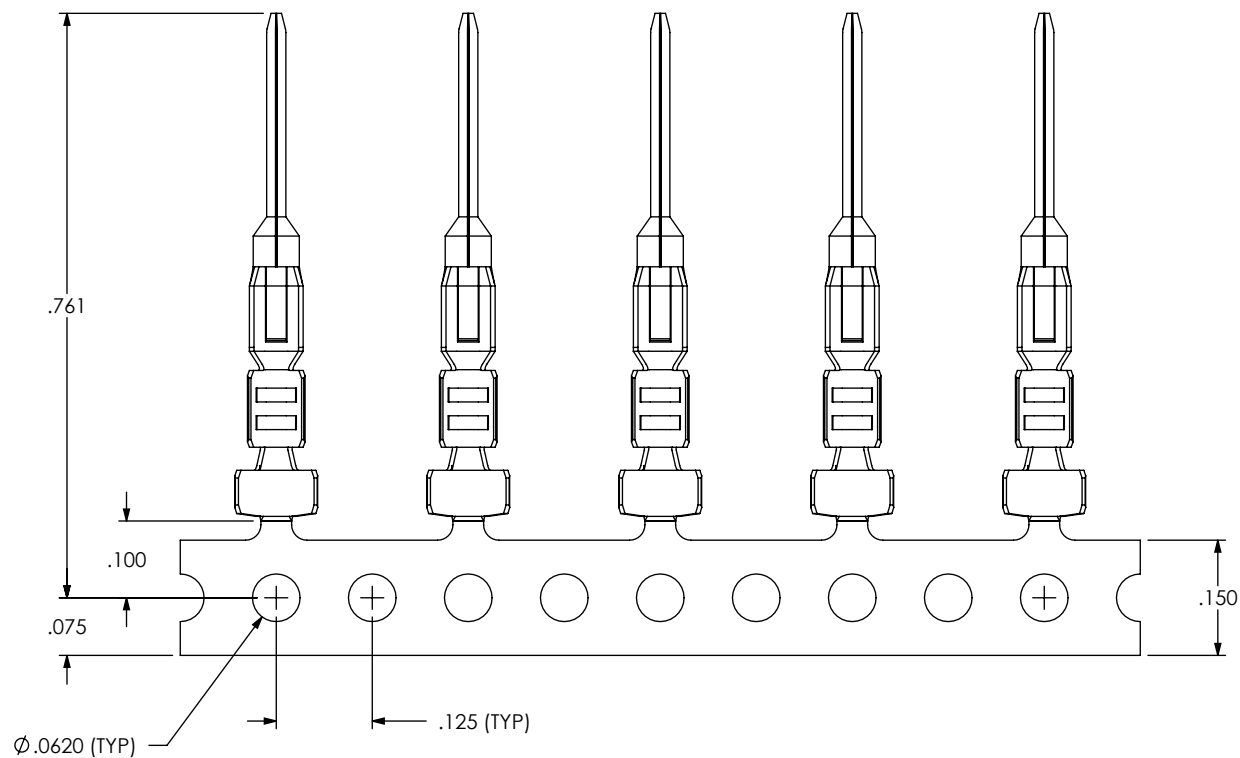
T1M74-X-XX-X

BY: VICKY Z

01/13/2010

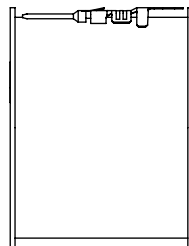
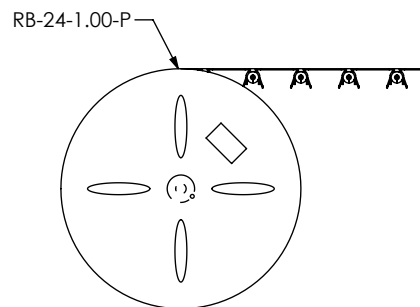
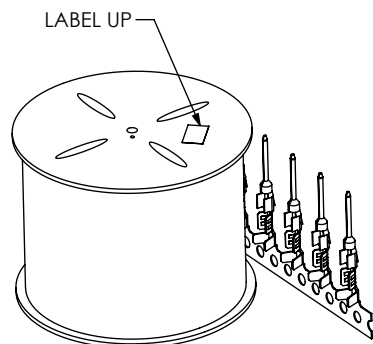
SHEET 1 OF 2

CARRIER SPECIFICATIONS



REEL SPECIFICATIONS

PLATED T1M74 PARTS ARE TO BE UNWOUND THEN REWOUND AND COUNTED.
 15,300+100/-0 PCS POSITIONED AS SHOWN ON SAMTEC REEL WITH VIEWPORTS.
 LABELED T1M74 WITH APPROPRIATE PLATE CALL OUT AND LABEL PLACED AS SHOWN.
 MAXIMUM OF 2 SPLICES PER REEL, SPLICES ARE NOT TO BE CONNECTED.
 NUMBER OF SPLICES TO BE MARKED ON EACH REEL.
 REELED PARTS TO BE INTERLEAVED WITH PAPER BETWEEN EACH LAYER OF PARTS.
 SECURELY CONNECT INTERLEAF SPLICE.
 OUTER WRAP SHALL RECEIVE RB-24-1.00-P PROTECTIVE REEL BAND.



PROPRIETARY NOTE

THIS DOCUMENT CONTAINS INFORMATION
 CONFIDENTIAL AND PROPRIETARY TO
 SAMTEC, INC. AND SHALL NOT BE REPRODUCED
 OR TRANSFERRED TO OTHER DOCUMENTS OR
 DISCLOSED TO OTHERS OR USED FOR ANY
 PURPOSE OTHER THAN THAT WHICH IT WAS
 OBTAINED WITHOUT THE EXPRESSED WRITTEN
 CONSENT OF SAMTEC, INC.

DO NOT SCALE DRAWING

SHEET SCALE: 4:1

samtec

520 PARK EAST BLVD, NEW ALBANY, IN 47150
 PHONE: 812-944-6733 FAX: 812-948-5047
 e-Mail: info@SAMTEC.com code: 55322

DESCRIPTION:
 .100" C.L. DISCRETE WIRE TERMINAL

DWG. NO.
T1M74-X-XX-X

BY: VICKY Z 01/13/2010 SHEET 2 OF 2

Mouser Electronics

Authorized Distributor

Click to View Pricing, Inventory, Delivery & Lifecycle Information:

[Samtec:](#)

[T1M74-L-03-L](#) [T1M74-L-03-S](#) [T1M74-L-01-S](#) [T1M74-L-02-S](#) [T1M74-R-02-S](#) [T1M74-L-03-F](#)