

ALL DIMENSIONS ARE REFERENCE
(SEE T-TM82-XXXX-XX FOR CONTROLLING PRINT)

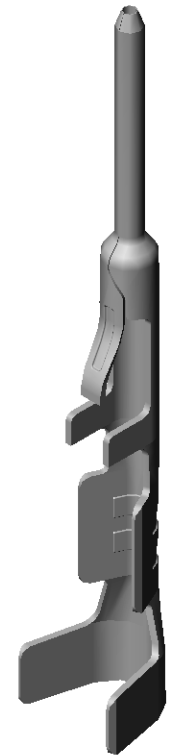
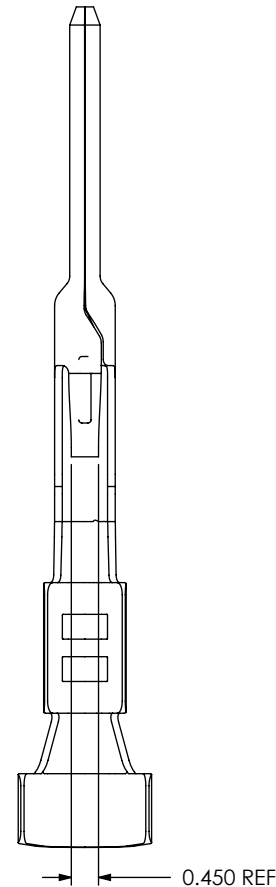
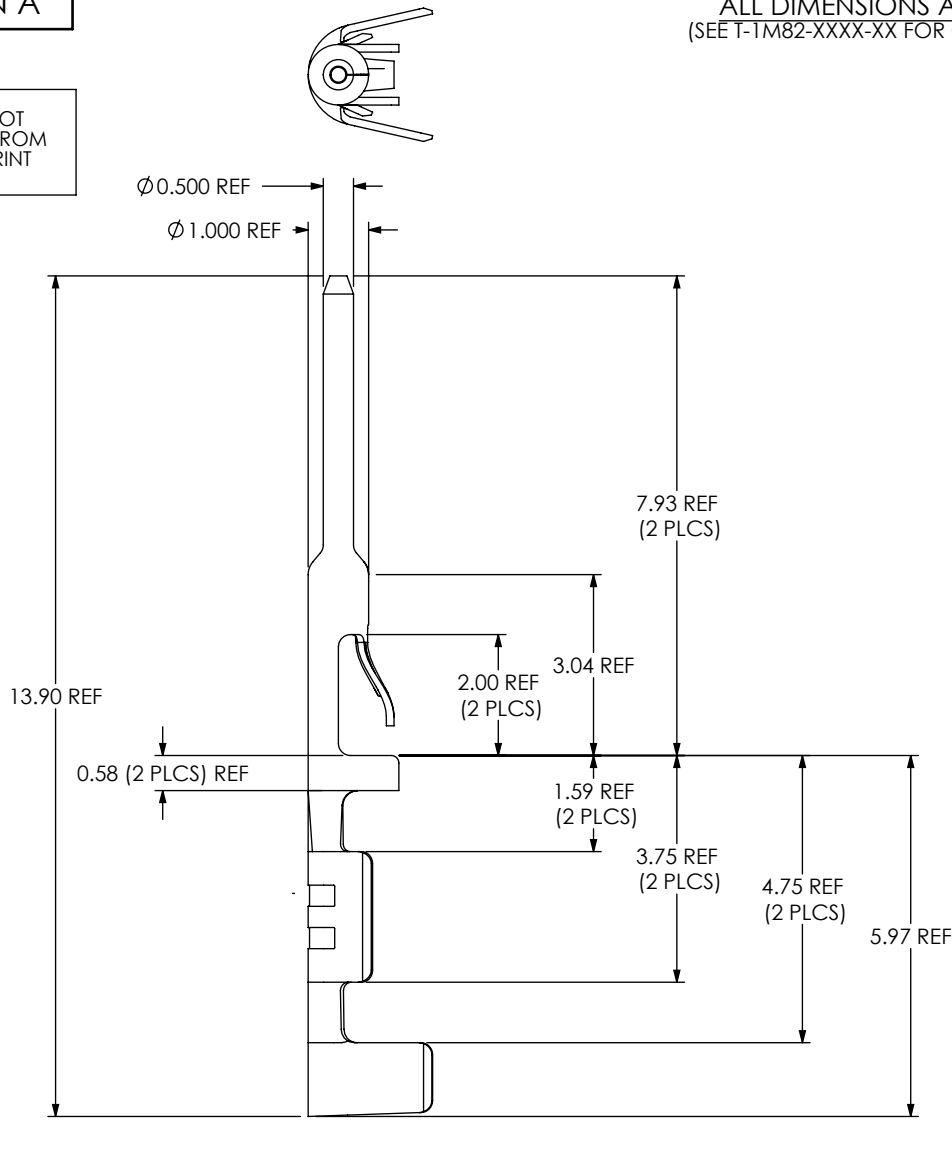
T1M82-X-XXXX-01-XX

DO NOT
SCALE FROM
THIS PRINT

SUPPLIED
-L: LOOSE
-R: REEL

PLATING SPECIFICATION
-L: LIGHT SELECTIVE
-S: SELECTIVE
-F: FLASH SELECTIVE

LEAD STYLE
-2426: 24-26 AWG
-2830: 28-30 AWG



UNLESS OTHERWISE SPECIFIED,
DIMENSIONS ARE IN MILLIMETERS.

PROPRIETARY NOTE

THIS DOCUMENT CONTAINS INFORMATION
CONFIDENTIAL AND PROPRIETARY TO
SAMTEC, INC. AND SHALL NOT BE REPRODUCED
OR TRANSFERRED TO OTHER DOCUMENTS OR
DISCLOSED TO OTHERS OR USED FOR ANY
PURPOSE OTHER THAN THAT WHICH IT WAS
OBTAINED WITHOUT THE EXPRESSED WRITTEN
CONSENT OF SAMTEC, INC.

samtec

520 PARK EAST BLVD, NEW ALBANY, IN 47150
PHONE: 812-944-6733 FAX: 812-948-5047
e-Mail: info@SAMTEC.com code: 55322

DO NOT SCALE DRAWING

SHEET SCALE: 8:1

DESCRIPTION:

2mm C.L. DISCRETE WIRE TERMINAL

DWG. NO.

T1M82-X-XXXX-01-XX

BY: J. BORGELT 08-09-2010

SHEET 1 OF 2

CARRIER SPECIFICATIONS

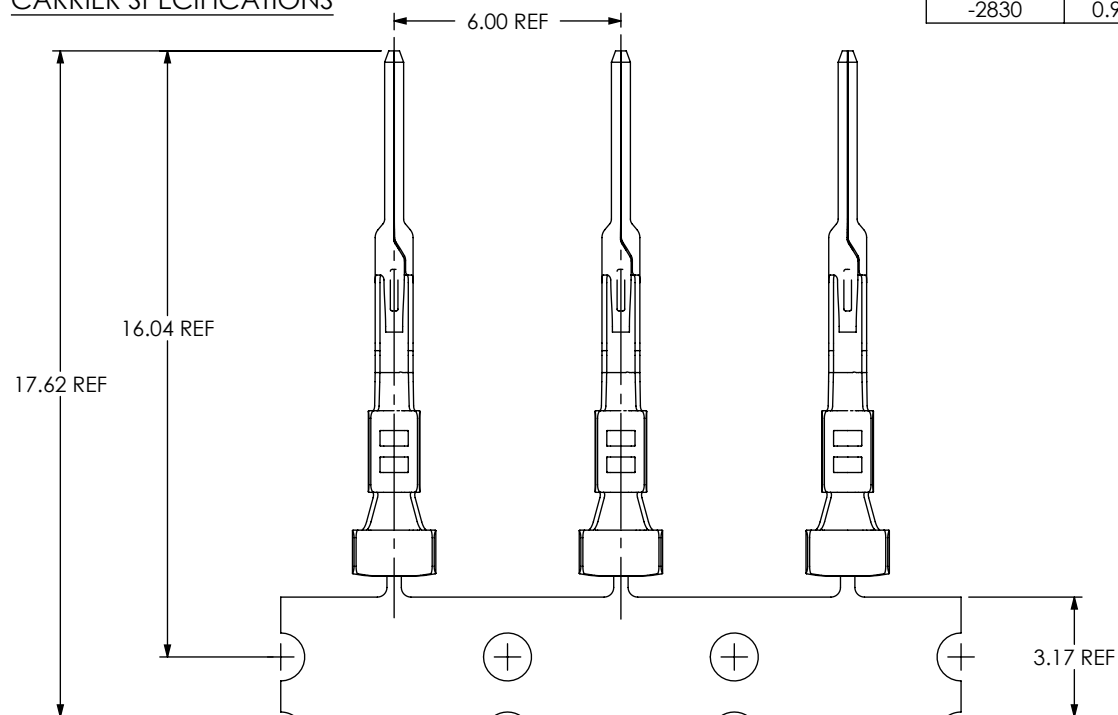
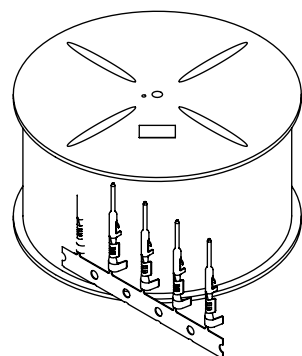


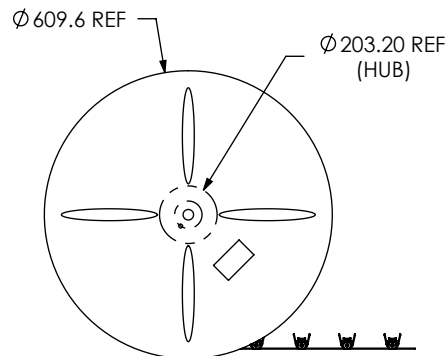
TABLE 1						
LEAD STYLE	"A"	"B"	"C"	"D"	"E"	"F"
-2426	1.36	1.04	2.21	2.06	2.54	4.92
-2830	0.96	0.87	1.37	1.45	1.98	3.28



REEL SPECIFICATIONS



UNWINDING DIRECTION



PROPRIETARY NOTE

THIS DOCUMENT CONTAINS INFORMATION CONFIDENTIAL AND PROPRIETARY TO SAMTEC, INC. AND SHALL NOT BE REPRODUCED OR TRANSFERRED TO OTHER DOCUMENTS OR DISCLOSED TO OTHERS OR USED FOR ANY PURPOSE OTHER THAN THAT WHICH IT WAS OBTAINED WITHOUT THE EXPRESSED WRITTEN CONSENT OF SAMTEC, INC.

DO NOT SCALE DRAWING

SHEET SCALE: 8:1

samtec

520 PARK EAST BLVD, NEW ALBANY, IN 47150
PHONE: 812-944-6733 FAX: 812-948-5047
e-Mail: info@SAMTEC.com code: 55322

DESCRIPTION:

2mm C.L. DISCRETE WIRE TERMINAL

DWG. NO.

T1M82-X-XXXX-01-XX

BY: J. BORGELT 08-09-2010

SHEET 2 OF 2

Mouser Electronics

Authorized Distributor

Click to View Pricing, Inventory, Delivery & Lifecycle Information:

Samtec:

[T1M82-L-2830-01-F](#) [T1M82-L-2426-01-S](#) [T1M82-R-2830-01-S](#) [T1M82-L-2830-01-S](#) [T1M82-R-2426-01-S](#) [T1M82-R-2830-01-F](#)