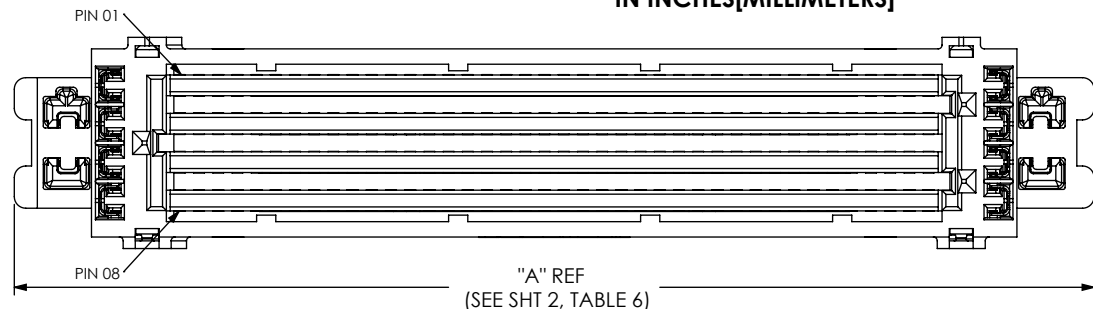


DO NOT  
SCALE FROM  
THIS PRINT



SEAR-XX-XX.X-XX-XXXX

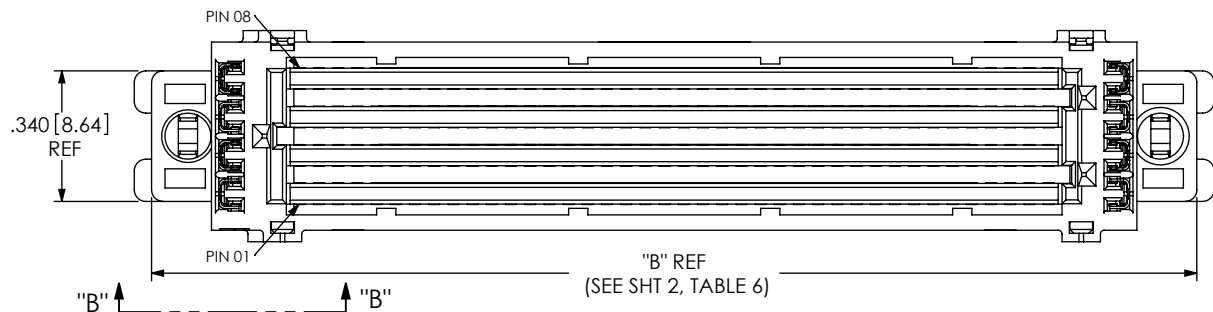
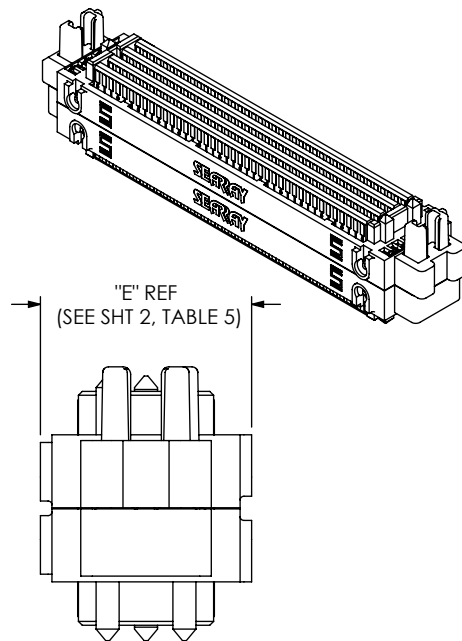
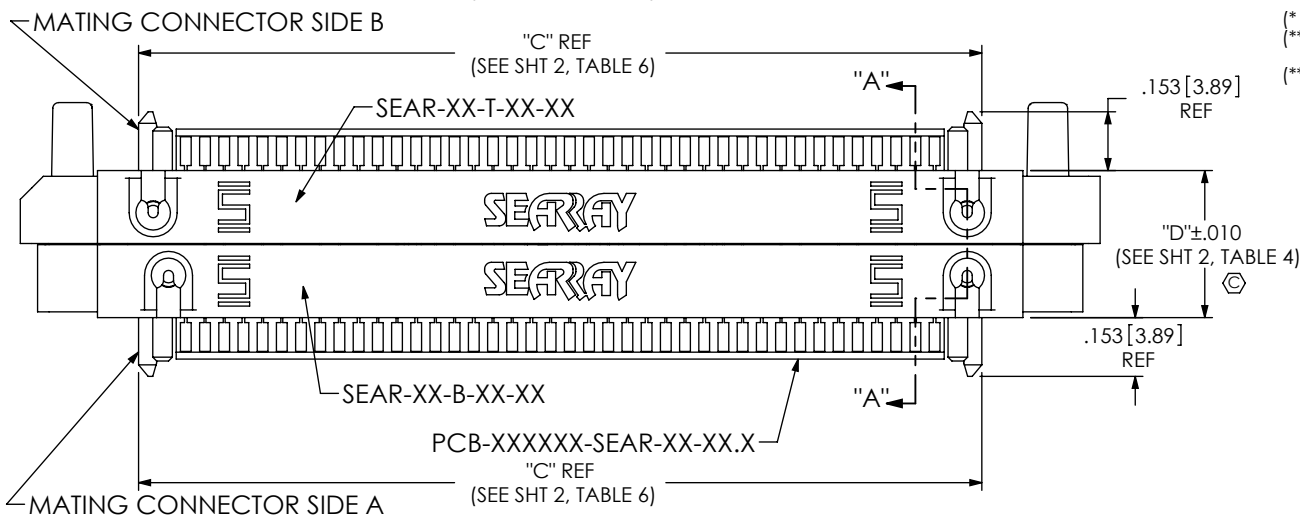
No OF POSITIONS  
\*-10, \*-15, \*\*20, \*-30,  
-40, -50 (PER ROW)  
(SEE NOTE 7)

LEAD STYLE  
-10.0: 10mm  
-20.0: 20mm  
-30.0: 30mm  
\*\*-31.0: 31mm

OHMS  
\*-050: 50 OHMS  
SINGLE-ENDED ONLY  
(GSGSGSG....)  
-085: 85 OHMS  
DIFFERENTIAL PAIR ONLY  
(GSSGSSGSG...)  
\*-100: 100 OHMS  
DIFFERENTIAL PAIR ONLY  
(GSSGSSGSG...)  
\*\*-085Q: 85 OHMS  
LOW CROSSTALK FOR  
QPI APPLICATIONS

ROW  
\*.04: 4 ROW  
-06: 6 ROW  
-08: 8 ROW  
-10: 10 ROW

(\* = NOT TOOLED)  
(\*\* = TOOLED ONLY IN -20 & -40 POS, -31.0mm  
LEADSTYLE)  
(\*\*\*= TOOLED ONLY FOR -085Q OHM OPTION)



NOTES:

1. REPRESENTS A CRITICAL DIMENSION.
2. ALIGN WITH MATING CONNECTOR SIDE A SEAF PIN 1 INDICATOR.
3. PCB CENTERING CLIP RETENTION TO BE TBD.
4. PCB PAD PLATED WITH .000030 INCHES GOLD WITH A HARDNESS OF 130-200 KNOOP PER ASTM B 488 TYPE 2, GRADE C.
5. DOWEL PIN RETENTION AFTER HEAT STAKE TO BE 1.0LBS[4.44N] MIN.
6. ASSEMBLIES TO BE PACKAGED IN TUBES.
7. -20 POSITION ONLY AVAILABLE IN 10 ROW.

FIG 1  
SEAR-40-10.0-08-085 SHOWN

TABLE 1 STACK HEIGHT					
CONNECTOR SIDE A SEAF LEAD STYLE	CONNECTOR SIDE B SEAF LEAD STYLE	SEAR LEAD STYLE			
		-10.0	-20.0	-30.0	-31.0
-05.0	-05.0	20mm	30mm	40mm	31mm

TABLE 2			
SEAR ASSEMBLY (LEAD STYLE)	TOP BODY CALLOUT	BOTTOM BODY CALLOUT	PCB P/N
SEAR-XX-10.0-XX-XXX	SEAR-XX-T-01-XX	SEAR-XX-B-01-XX	PCB-XXXXXX-SEAR-XX-10.0
SEAR-XX-20.0-XX-XXX	SEAR-XX-T-02-XX	SEAR-XX-B-01-XX	PCB-XXXXXX-SEAR-XX-20.0
SEAR-XX-30.0-XX-XXX	SEAR-XX-T-02-XX	SEAR-XX-B-02-XX	PCB-XXXXXX-SEAR-XX-30.0
SEAR-XX-31.0-XX-085Q	SEAR-XX-T-02-XX	SEAR-XX-B-02-XX	PCB-XXXXXX-SEAR-XX-31.0

UNLESS OTHERWISE SPECIFIED,  
DIMENSIONS ARE IN INCHES.

TOLERANCES ARE:

DECIMALS ANGLES  
.XX: ±.01 [.3] 2°  
.XXX: ±.003 [.08]  
.XXXX: ±.0020 [.051]

PROPRIETARY NOTE

THIS DOCUMENT CONTAINS INFORMATION  
CONFIDENTIAL AND PROPRIETARY TO  
SAMTEC, INC. AND SHALL NOT BE REPRODUCED  
OR TRANSFERRED TO OTHER DOCUMENTS OR  
DISCLOSED TO OTHERS OR USED FOR ANY  
PURPOSE OTHER THAN THAT WHICH IT WAS  
OBTAINED WITHOUT THE EXPRESSED WRITTEN  
CONSENT OF SAMTEC, INC.

MATERIAL: DO NOT SCALE DRAWING  
INSULATOR: LCP, COLOR: BLACK  
CLIP: COPPER ALLOY  
PCB: FR4, COPPER

SHEET SCALE: 2:1

F:\DWG\MISC\MKTG\SEAR-XX-XX.X-XX-XXXX-MKT.SLDDRW

**samtec**

520 PARK EAST BLVD, NEW ALBANY, IN 47150  
PHONE: 812-944-6733 FAX: 812-948-5047  
e-Mail: info@SAMTEC.com code 55322

DESCRIPTION:

SEAR RISER ASSEMBLY

DWG. NO.

SEAR-XX-XX.X-XX-XXXX

BY: R MUSSER 05/06/2010

SHEET 1 OF 6

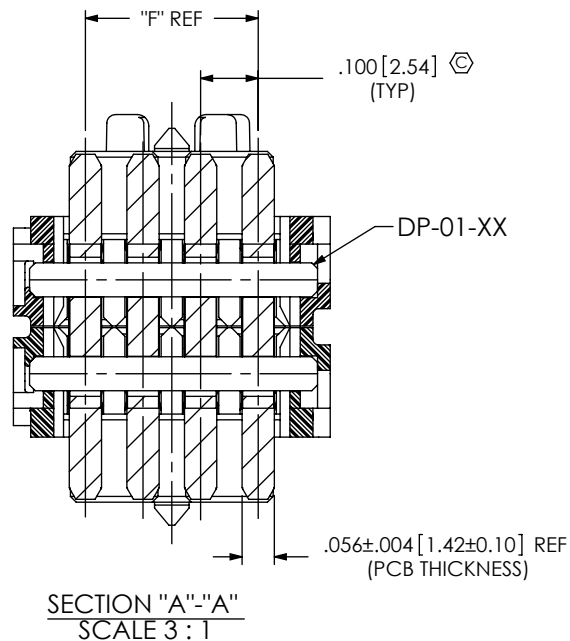
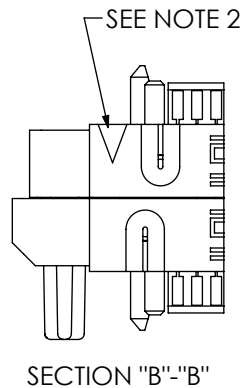


TABLE 4	
STYLE	"D"
-10.0	.383 [9.73]
-20.0	.777 [19.73]
-30.0	1.170 [29.73]
***-31.0	1.210 [30.73]

(\*\*\*= TOOLED ONLY FOR  
-085Q OHM OPTION)

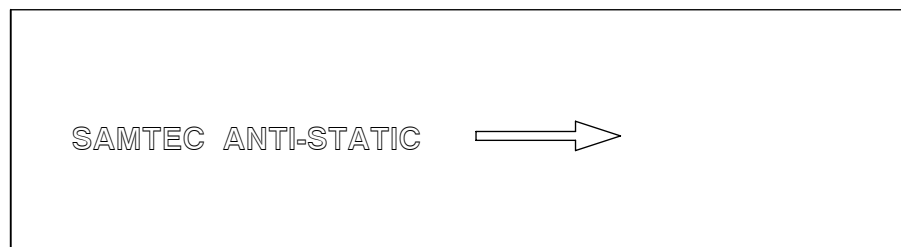
TABLE 5			
No. OF ROWS	"E"	"F"	DP-01-XX
*-04	.350 [8.89]	.100 [2.54]	DP-01-04
-06	.450 [11.43]	.200 [5.08]	DP-01-06
-08	.550 [13.97]	.300 [7.62]	DP-01-08
-10	.650 [16.51]	.400 [10.16]	DP-01-10

(\* = NOT TOOLED)

TABLE 6			
No. OF POS	"A"	"B"	"C"
*-10	1.312 [33.32]	1.222 [31.04]	.696 [17.68]
*-15	1.562 [39.67]	1.472 [37.39]	.946 [24.03]
***-20	1.812 [46.02]	1.722 [43.74]	1.196 [30.38]
*-30	2.312 [58.72]	2.222 [56.44]	1.696 [43.08]
-40	2.812 [71.42]	2.722 [69.14]	2.196 [55.78]
-50	3.312 [84.12]	3.222 [81.84]	2.696 [68.48]

(\* = NOT TOOLED; \*\*\* = TOOLED ONLY FOR 085Q OPTION)

TABLE 3	
SEAR ASSEMBLY (OHMS)	PCB P/N
SEAR-XX-XX.X-XX-050	PCB-102598-SEAR-XX-XX.X
SEAR-XX-XX.X-XX-085	PCB-102596-SEAR-XX-XX.X
SEAR-20-31.0-10-085Q	PCB-105033-SEAR-20-31.0
SEAR-40-31.0-XX-085Q	PCB-105033-SEAR-40-31.0
SEAR-XX-XX.X-XX-100	PCB-102597-SEAR-XX-XX.X



SEE TABLE 7

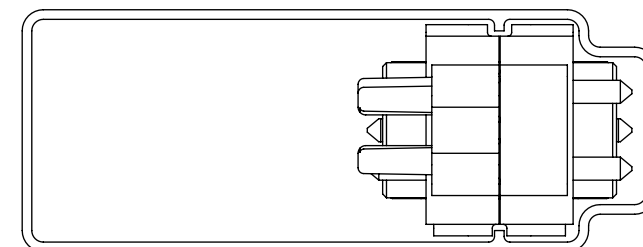
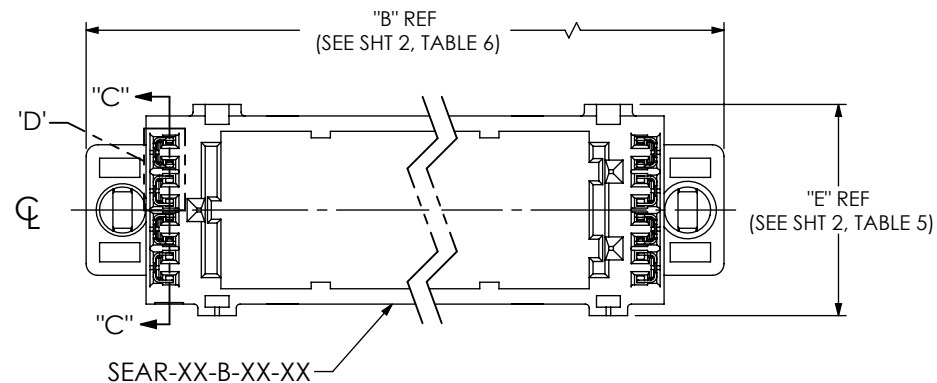
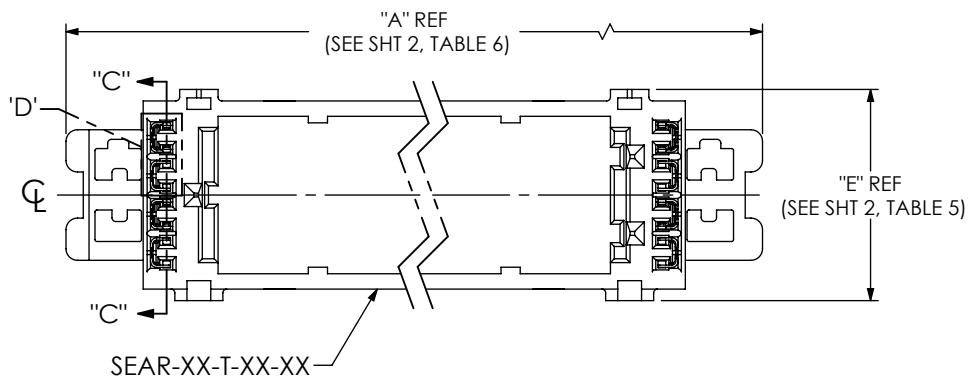


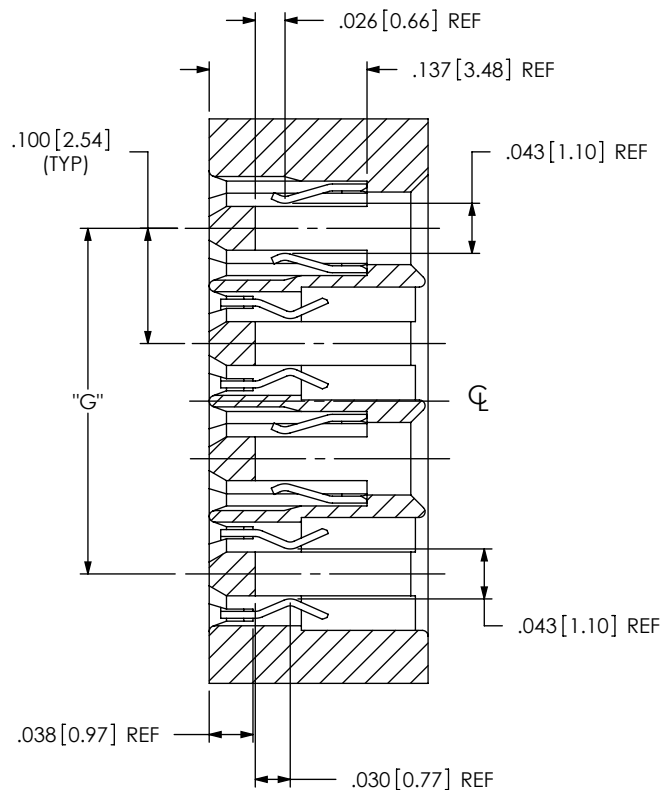
FIG. 2  
SEAR-40-10.0-08 SHOWN  
(SHOWN IN PACKAGING TUBE)

TABLE 7		
SEAR ASSEMBLY (LEAD STYLE)	PACKAGING TUBE P/N	TUBE PLUG P/N (2 REQ'D)
SEAR-XX-XX.X-06	PT-SEAR001-06	TP-31
SEAR-XX-XX.X-08	PT-SEAR002-08	TP-31
SEAR-XX-XX.X-10	PT-SEAR003-10	TP-31

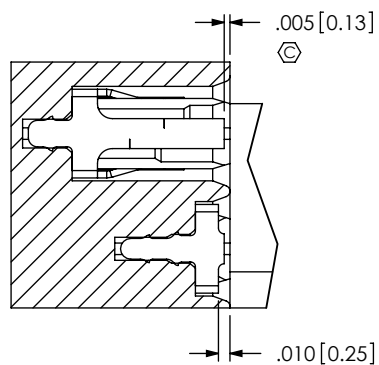
<p><b>PROPRIETARY NOTE</b> THIS DOCUMENT CONTAINS INFORMATION CONFIDENTIAL AND PROPRIETARY TO SAMTEC, INC. AND SHALL NOT BE REPRODUCED OR TRANSFERRED TO OTHER DOCUMENTS OR DISCLOSED TO OTHERS OR USED FOR ANY PURPOSE OTHER THAN THAT WHICH IT WAS OBTAINED WITHOUT THE EXPRESSED WRITTEN CONSENT OF SAMTEC, INC.</p> <p>DO NOT SCALE DRAWING</p> <p>SHEET SCALE: 2:1</p>	<p>520 PARK EAST BLVD, NEW ALBANY, IN 47150 PHONE: 812-944-6733 FAX: 812-948-5047 e-Mail: info@SAMTEC.com code 55322</p>	
	<p>DESCRIPTION: SEAR RISER ASSEMBLY</p>	
	<p>DWG. NO. SEAR-XX-XX.X-XX-XXXX</p>	
	<p>BY: R MUSSER 05/06/2010</p>	<p>SHEET 2 OF 6</p>



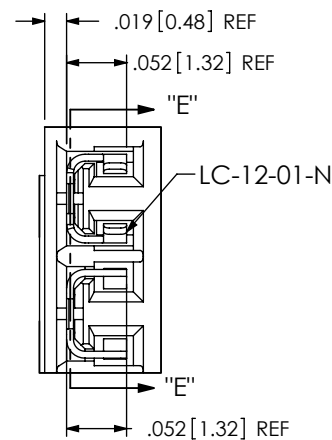
IN PROCESS 1  
(INSERT PCB CENTERING CLIPS INTO BODIES)  
(SEE NOTE 3)



SECTION "C"-"C"  
SCALE 6 : 1



SECTION "E"-"E"  
SCALE 6 : 1



DETAIL "D"  
SCALE 6 : 1

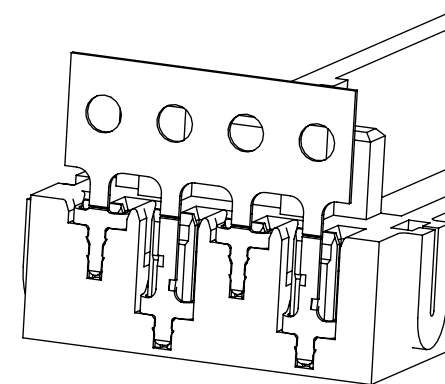


TABLE 7	
No. OF ROWS	"G"
*-04	.100 [2.54]
-06	.200 [5.08]
-08	.300 [7.62]
-10	.400 [10.16]

(\* = NOT TOOLED)

PROPRIETARY NOTE  
THIS DOCUMENT CONTAINS INFORMATION  
CONFIDENTIAL AND PROPRIETARY TO  
SAMTEC, INC. AND SHALL NOT BE REPRODUCED  
OR TRANSFERRED TO OTHER DOCUMENTS OR  
DISCLOSED TO OTHERS OR USED FOR ANY  
PURPOSE OTHER THAN THAT WHICH IT WAS  
OBTAINED WITHOUT THE EXPRESSED WRITTEN  
CONSENT OF SAMTEC, INC.

DO NOT SCALE DRAWING

SHEET SCALE: 2:1

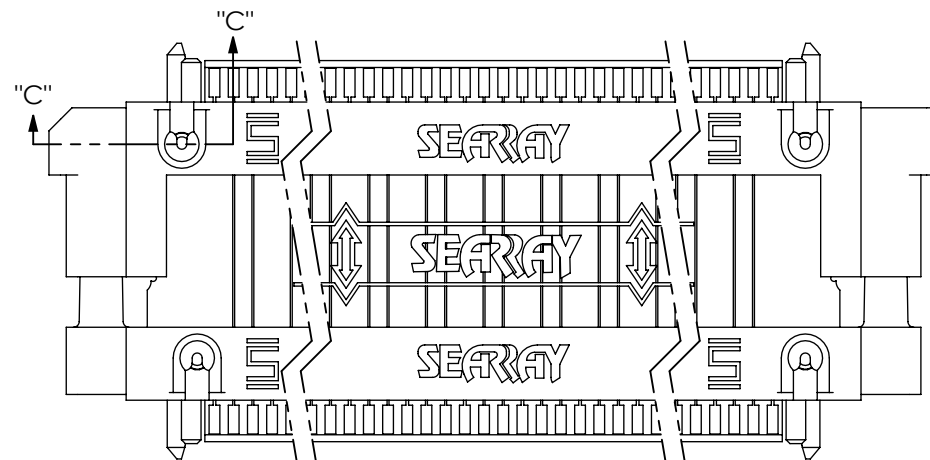
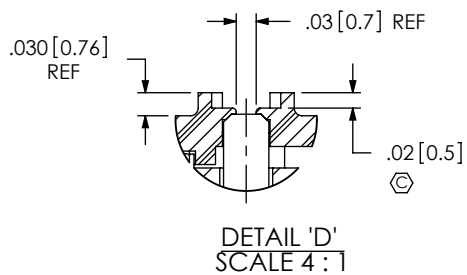
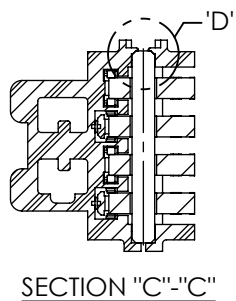
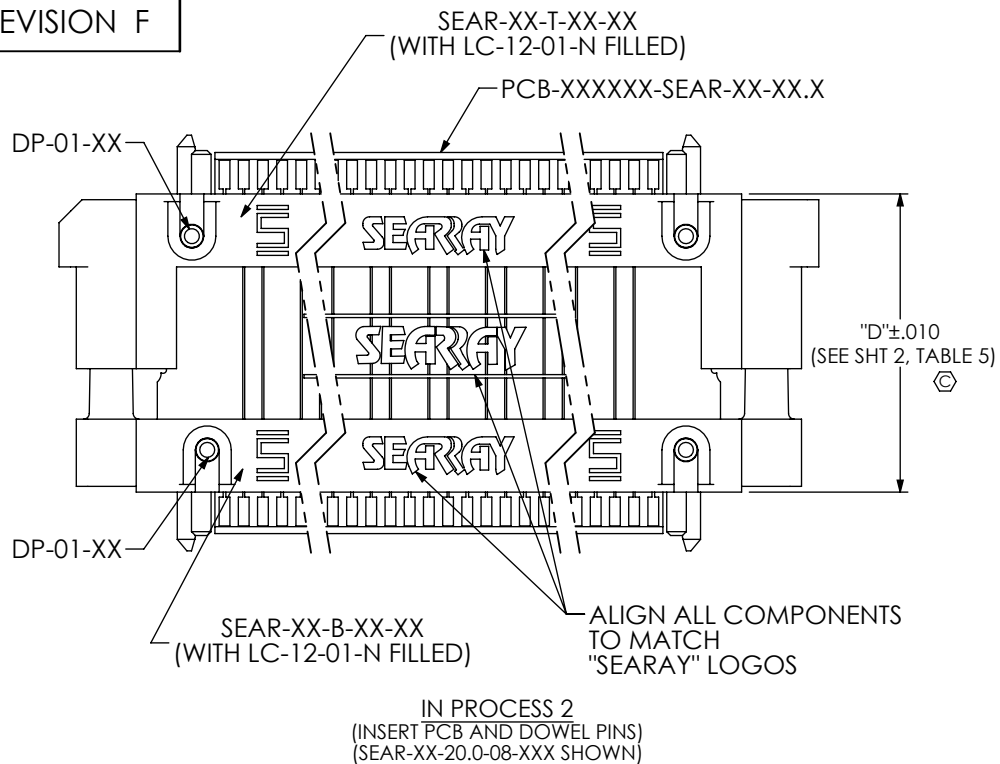
**samtec**

520 PARK EAST BLVD, NEW ALBANY, IN 47150  
PHONE: 812-944-6733 FAX: 812-948-5047  
e-Mail info@SAMTEC.com code 55322

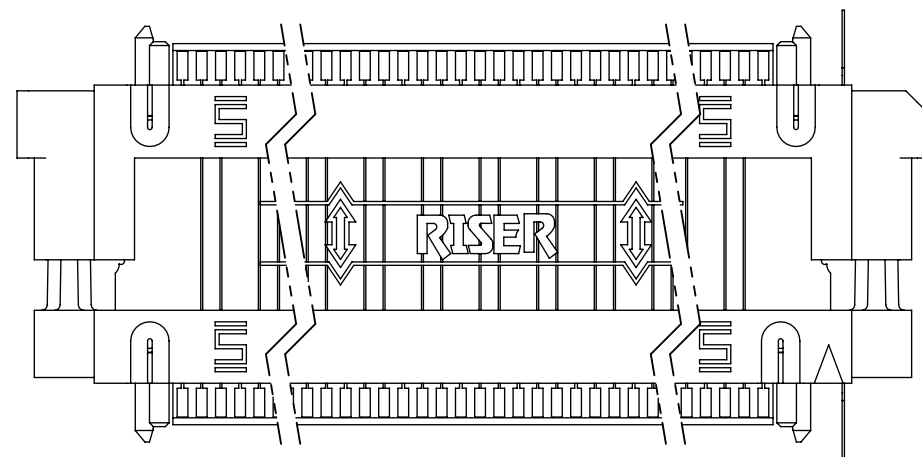
DESCRIPTION:  
SEAR RISER ASSEMBLY

DWG. NO.  
SEAR-XX-XX.X-XX-XXXX

BY: R MUSSER 05/06/2010 SHEET 3 OF 6



FINAL ASSEMBLY  
(HEAT STAKE DOWEL PINS)  
(SEAR-XX-20.0-08-XXX SHOWN)  
(SEE NOTE 5)



FINAL ASSEMBLY (BACK VIEW)

PROPRIETARY NOTE

THIS DOCUMENT CONTAINS INFORMATION  
CONFIDENTIAL AND PROPRIETARY TO  
SAMTEC, INC. AND SHALL NOT BE REPRODUCED  
OR TRANSFERRED TO OTHER DOCUMENTS OR  
DISCLOSED TO OTHERS OR USED FOR ANY  
PURPOSE OTHER THAN THAT WHICH IT WAS  
OBTAINED WITHOUT THE EXPRESSED WRITTEN  
CONSENT OF SAMTEC, INC.

DO NOT SCALE DRAWING

SHEET SCALE: 2:1

**samtec**

520 PARK EAST BLVD, NEW ALBANY, IN 47150  
PHONE: 812-944-6733 FAX: 812-948-5047  
e-Mail: info@SAMTEC.com code 55322

DESCRIPTION:  
SEAR RISER ASSEMBLY

DWG. NO.  
SEAR-XX-XX.X-XX-XXXX

BY: R MUSSER 05/06/2010 SHEET 4 OF 6

SEAR-40-XX.X-06-XXXX SIGNAL MAPPING FOR -085 OHMS						
END 1	1	2	3	4	5	6
	GND	SIG	SIG	GND	SIG	SIG
END 2	10	20	30	40	50	60
End 1	7	8	9	10	11	12
	GND	SIG	SIG	GND	SIG	SIG
End 2	9	19	29	39	49	59
End 1	13	14	15	16	17	18
	GND	SIG	SIG	GND	SIG	SIG
End 2	8	18	28	38	48	58
END 1	...	...	...	...	...	...
	GND	SIG	SIG	GND	SIG	SIG
END 2	...	...	...	...	...	...
END 1	...	...	...	...	...	...
	GND	SIG	SIG	GND	SIG	SIG
END 2	...	...	...	...	...	...
END 1	223	224	225	226	227	228
	GND	SIG	SIG	GND	SIG	SIG
END 2	3	13	23	33	43	53
END 1	229	230	231	232	233	234
	GND	SIG	SIG	GND	SIG	SIG
END 2	2	12	22	32	42	52
END 1	235	236	237	238	239	240
	GND	SIG	SIG	GND	SIG	SIG
END 2	1	11	21	31	41	51

SEAR-40-XX.X-08-XXXX SIGNAL MAPPING FOR -085 OHMS								
END 1	1	2	3	4	5	6	7	8
	GND	SIG	SIG	GND	SIG	SIG	GND	SIG
END 2	10	20	30	40	50	60	70	80
END 1	9	10	11	12	13	14	15	16
	SIG	GND	SIG	SIG	GND	SIG	SIG	GND
END 2	9	19	29	39	49	59	69	79
END 1	17	18	19	20	21	22	23	24
	SIG	SIG	GND	SIG	SIG	GND	SIG	SIG
END 2	8	18	28	38	48	58	68	78
END 1	...	...	...	...	...	...	...	...
	GND	SIG	SIG	GND	SIG	SIG	GND	SIG
END 2	...	...	...	...	...	...	...	...
END 1	...	...	...	...	...	...	...	...
	SIG	GND	SIG	SIG	GND	SIG	SIG	GND
END 2	...	...	...	...	...	...	...	...
END1	297	298	299	300	301	302	303	304
	SIG	SIG	GND	SIG	SIG	GND	SIG	SIG
END 2	243	253	263	273	283	293	303	313
END 1	305	306	307	308	309	310	311	312
	GND	SIG	SIG	GND	SIG	SIG	GND	SIG
END 2	242	252	262	272	282	292	302	312
END 1	313	314	315	316	317	318	319	320
	SIG	GND	SIG	SIG	GND	SIG	SIG	GND
END 2	241	251	261	271	281	291	301	311

SEAR-40-XX.X-10-XXXX SIGNAL MAPPING FOR -085 OHMS										
END 1	1	2	3	4	5	6	7	8	9	10
	GND	SIG	SIG	GND	SIG	SIG	GND	SIG	SIG	GND
END 2	10	20	30	40	50	60	70	80	90	100
END 1	11	12	13	14	15	16	17	18	19	20
	SIG	SIG	GND	SIG	SIG	GND	SIG	SIG	GND	SIG
END 2	9	19	29	39	49	59	69	79	89	99
END 1	21	22	23	24	25	26	27	28	29	30
	SIG	GND	SIG	SIG	GND	SIG	SIG	GND	SIG	SIG
END 2	8	18	28	38	48	58	68	78	88	98
END 1	...	...	...	...	...	...	...	...	...	...
	GND	SIG	SIG	GND	SIG	SIG	GND	SIG	SIG	GND
END 2	...	...	...	...	...	...	...	...	...	...
END 1	...	...	...	...	...	...	...	...	...	...
	GND	SIG	SIG	GND	SIG	SIG	GND	SIG	SIG	GND
END 2	...	...	...	...	...	...	...	...	...	...
END 1	371	372	373	374	375	376	377	378	379	380
	SIG	SIG	GND	SIG	SIG	GND	SIG	SIG	GND	SIG
END 2	303	313	323	333	343	353	363	373	383	393
END 1	381	382	383	384	385	386	387	388	389	390
	SIG	GND	SIG	SIG	GND	SIG	SIG	GND	SIG	SIG
END 2	302	312	322	332	342	352	362	372	382	392
END 1	391	392	393	394	395	396	397	398	399	400
	GND	SIG	SIG	GND	SSIG	SIG	GND	SIG	SIG	GND
END 2	301	311	321	331	341	351	361	371	381	391

PROPRIETARY NOTE  
THIS DOCUMENT CONTAINS INFORMATION  
CONFIDENTIAL AND PROPRIETARY TO  
SAMTEC, INC. AND SHALL NOT BE REPRODUCED  
OR TRANSFERRED TO OTHER DOCUMENTS OR  
DISCLOSED TO OTHERS OR USED FOR ANY  
PURPOSE OTHER THAN THAT WHICH IT WAS  
OBTAINED WITHOUT THE EXPRESSED WRITTEN  
CONSENT OF SAMTEC, INC.

DO NOT SCALE DRAWING

SHEET SCALE: 2:1



520 PARK EAST BLVD, NEW ALBANY, IN 47150  
PHONE: 812-944-6733 FAX: 812-948-5047  
e-Mail info@SAMTEC.com code 55322

DESCRIPTION:  
SEAR RISER ASSEMBLY

DWG. NO.  
SEAR-XX-XX.X-XX-XXXX

BY: R MUSSER 05/06/2010 SHEET 5 OF 6

SEAR-50-XX.X-06-XXXX SIGNAL MAPPING FOR -085 OHMS						
END 1	1	2	3	4	5	6
	GND	SIG	SIG	GND	SIG	SIG
END 2	10	20	30	40	50	60
END 1	7	8	9	10	11	12
	GND	SIG	SIG	GND	SIG	SIG
END 2	9	19	29	39	49	59
END 1	13	14	15	16	17	18
	GND	SIG	SIG	GND	SIG	SIG
END 2	8	18	28	38	48	58
END 1	...	...	...	...	...	...
	GND	SIG	SIG	GND	SIG	SIG
END 2	...	...	...	...	...	...
END 1	...	...	...	...	...	...
	GND	SIG	SIG	GND	SIG	SIG
END 2	...	...	...	...	...	...
END 1	283	284	285	286	287	288
	GND	SIG	SIG	GND	SIG	SIG
END 2	243	253	263	273	283	293
END 1	289	290	291	292	293	294
	GND	SIG	SIG	GND	SIG	SIG
END 2	242	252	262	272	282	292
END 1	295	296	297	298	299	300
	GND	SIG	SIG	GND	SIG	SIG
END 2	241	251	261	271	281	291


SEAR-50-XX.X-08-XXXX SIGNAL MAPPING FOR -085 OHMS								
END 1	1	2	3	4	5	6	7	8
	GND	SIG	SIG	GND	SIG	SIG	GND	SIG
END 2	10	20	30	40	50	60	70	80
END 1	9	10	11	12	13	14	15	16
	SIG	GND	SIG	SIG	GND	SIG	SIG	GND
END 2	9	19	29	39	49	59	69	79
END 1	17	18	19	20	21	22	23	24
	SIG	SIG	GND	SIG	SIG	GND	SIG	SIG
END 2	8	18	28	38	48	58	68	78
END 1	...	...	...	...	...	...	...	...
	GND	SIG	SIG	GND	SIG	SIG	GND	SIG
END 2	...	...	...	...	...	...	...	...
END 1	...	...	...	...	...	...	...	...
	SIG	GND	SIG	SIG	GND	SIG	SIG	GND
END 2	...	...	...	...	...	...	...	...
END 1	377	378	379	380	381	382	383	384
	SIG	SIG	GND	SIG	SIG	GND	SIG	SIG
END 2	323	333	343	353	363	373	383	393
END 1	385	386	387	388	389	390	391	392
	GND	SIG	SIG	GND	SIG	SIG	GND	SIG
END 2	322	332	342	352	362	372	382	392
END 1	393	394	395	396	397	398	399	400
	SIG	GND	SIG	SIG	GND	SIG	SIG	GND
END 2	321	331	341	351	361	371	381	391

SEAR-50-XX.X-10-XXXX SIGNAL MAPPING FOR -085 OHMS										
END 1	1	2	3	4	5	6	7	8	9	10
	GND	SIG	SIG	GND	SIG	SIG	GND	SIG	SIG	GND
END 2	10	20	30	40	50	60	70	80	90	100
END 1	11	12	13	14	15	16	17	18	19	20
	SIG	SIG	GND	SIG	SIG	GND	SIG	SIG	GND	SIG
END 2	9	19	29	39	49	59	69	79	89	99
END 1	21	22	23	24	25	26	27	28	29	30
	SIG	GND	SIG	SIG	GND	SIG	SIG	GND	SIG	SIG
END 2	8	18	28	38	48	58	68	78	88	98
END 1	...	...	...	...	...	...	...	...	...	...
	GND	SIG	SIG	GND	SIG	SIG	GND	SIG	SIG	GND
END 2	...	...	...	...	...	...	...	...	...	...
END 1	...	...	...	...	...	...	...	...	...	...
	GND	SIG	SIG	GND	SIG	SIG	GND	SIG	SIG	GND
END 2	...	...	...	...	...	...	...	...	...	...
END 1	471	472	473	474	475	476	477	478	479	480
	SIG	SIG	GND	SIG	SIG	GND	SIG	SIG	GND	SIG
END 2	403	413	423	433	443	453	463	473	483	493
END 1	481	482	483	484	485	486	487	488	489	490
	SIG	GND	SIG	SIG	GND	SIG	SIG	GND	SIG	SIG
END 2	402	412	422	432	442	452	462	472	482	492
END 1	491	492	493	494	495	496	497	4998	499	500
	GND	SIG	SIG	GND	SIG	SIG	GND	SIG	SIG	GND
END 2	401	411	421	431	441	451	461	471	481	491

PROPRIETARY NOTE  
THIS DOCUMENT CONTAINS INFORMATION  
CONFIDENTIAL AND PROPRIETARY TO  
SAMTEC, INC. AND SHALL NOT BE REPRODUCED  
OR TRANSFERRED TO OTHER DOCUMENTS OR  
DISCLOSED TO OTHERS OR USED FOR ANY  
PURPOSE OTHER THAN THAT WHICH IT WAS  
OBTAINED WITHOUT THE EXPRESSED WRITTEN  
CONSENT OF SAMTEC, INC.

DO NOT SCALE DRAWING

SHEET SCALE: 2:1



520 PARK EAST BLVD, NEW ALBANY, IN 47150  
PHONE: 812-944-6733 FAX: 812-948-5047  
e-Mail info@SAMTEC.com code 55322

DESCRIPTION:  
SEAR RISER ASSEMBLY

DWG. NO.  
SEAR-XX-XX.X-XX-XXXX

BY: R MUSSER 05/06/2010 SHEET 6 OF 6

# Mouser Electronics

Authorized Distributor

Click to View Pricing, Inventory, Delivery & Lifecycle Information:

Samtec:

[SEAR-40-31.0-08-085Q](#) [SEAR-40-20.0-10-100](#) [SEAR-20-30.0-10-085](#)