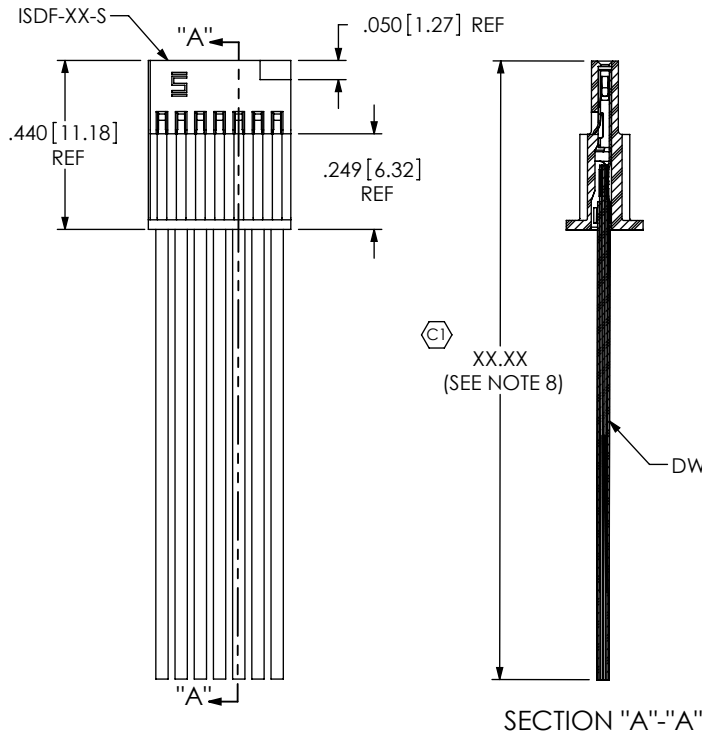


FIG. 1

-S: SINGLE END
(SFSSX-07-28-X-XX.XX-S SHOWN)



SECTION "A"-"A"

TABLE 1

SERIES	WIRE GAUGE	DWCX-XX-XX-300
SFSS-XX-XXX-XX-XX.XX-XX-XXX	28 AWG	DWC-28-XX-300
SFSS-XX-XXX-XX-XX.XX-XX-XXX	30 AWG	DWC-30-XX-300
SFSST-XX-XXX-XX-XX.XX-XX-XXX	28 AWG	DWCT-28-XX
SFSST-XX-XXX-XX-XX.XX-XX-XXX	30 AWG	DWCT-30-XX

NOTES:

1. C REPRESENTS A CRITICAL DIMENSION.
2. MINIMUM PULLOUT FORCE: 3.0 LBS [13.3 N].
3. CONTACT MUST BE INSERTED UNTIL RETENTION FEATURE LOCKS INTO PLACE.
4. ALL FINISHED GOODS ARE TO BE ELECTRICAL TESTED INCLUDING HI-POT TEST AT 1000 VOLTS DC. AFTER FINAL ELECTRICAL TEST, LABEL EACH ASSEMBLY WITH 1 LABEL-ET.
5. TINNED COPPER WIRE IS ROHS COMPLIANT.
6. PARTS TO BE LAYER PACKAGED.
7. END OF DISCRETE WIRE MUST BE IN THE RANGE AFTER CRIMP.
8. FOR LENGTHS LESS THAN 12 in, TOLERANCE SHALL BE +/- .125. FOR OTHER LENGTHS, TOLERANCE SHALL BE +/- .2%.
9. SEE DWLX-08-XX-X-XX.XX-X FOR PVC APPLICATIONS OR DWLT-08-XX-X-XX.XX-XX-XX FOR PTFE APPLICATIONS.
10. COLOR CODED CABLE NOT AVAILABLE WITH SFSST (FEP).

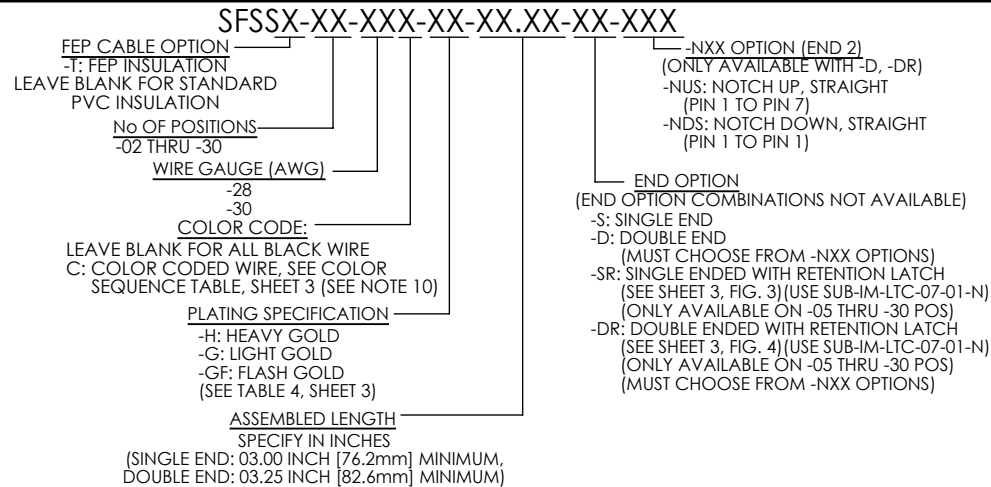


FIG. 2

-D: DOUBLE END
(SFSSX-07-28-X-XX.XX-D-NUS SHOWN)
(SAME AS FIG. 1, UNLESS OTHERWISE STATED)

UNLESS OTHERWISE SPECIFIED,
DIMENSIONS ARE IN INCHES.

TOLERANCES ARE:

DECIMALS

.XX: $\pm .01$ [.3]

.XXX: $\pm .005$ [.13]

.XXXX: $\pm .0020$ [.051]

ANGLES

2°

PROPRIETARY NOTE

THIS DOCUMENT CONTAINS INFORMATION
CONFIDENTIAL AND PROPRIETARY TO
SAMTEC, INC. AND SHALL NOT BE REPRODUCED
OR TRANSFERRED TO OTHER DOCUMENTS OR
DISCLOSED TO OTHERS OR USED FOR ANY
PURPOSE OTHER THAN THAT WHICH IT WAS
OBTAINED WITHOUT THE EXPRESSED WRITTEN
CONSENT OF SAMTEC, INC.

MATERIAL:

INSULATOR: LCP, COLOR: BLACK

CONTACT: BeCu

CABLE INSULATION: PVC

WIRE: TINNED COPPER

DO NOT SCALE DRAWING

SHEET SCALE: 2:1

DESCRIPTION:

.050 [1.27] SOCKET DISCRETE CABLE ASSEMBLY

DWG. NO.

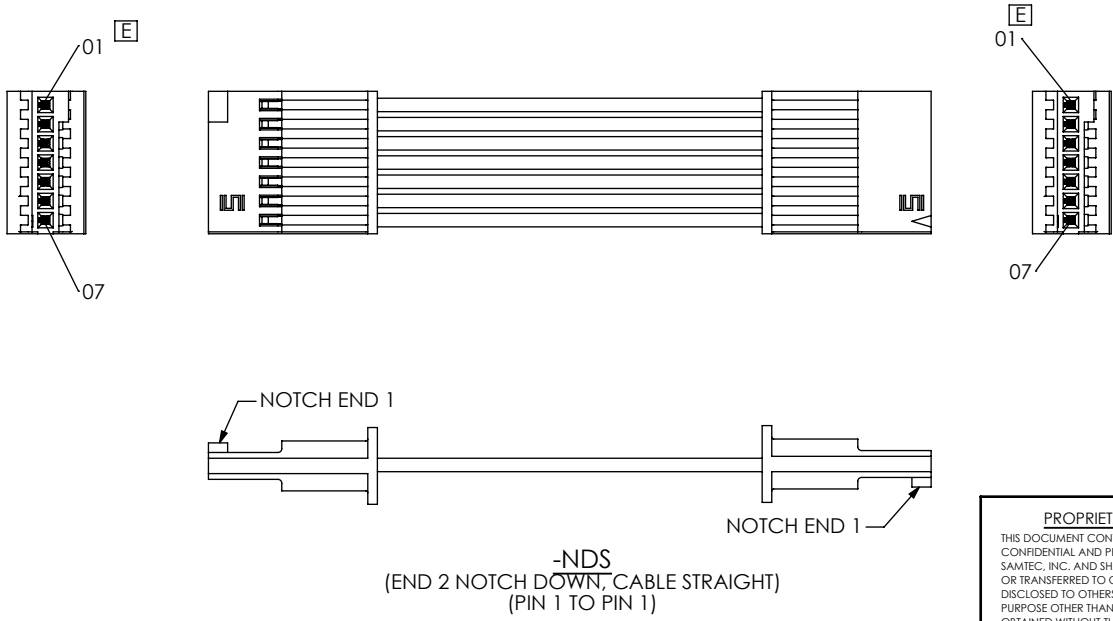
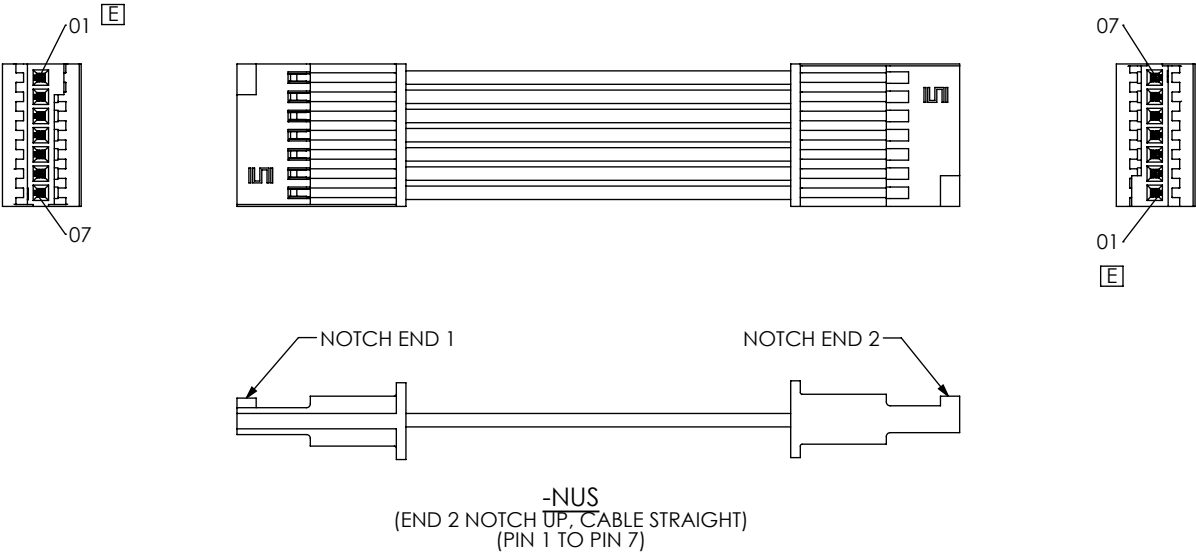
SFSSX-XX-XXX-XX-XX.XX-XX-XXX

BY: GAYNOR 6/12/2008

SHEET 1 OF 3

samtec

520 PARK EAST BLVD, NEW ALBANY, IN 47150
PHONE: 812-944-6733 FAX: 812-948-5047
e-Mail: info@SAMTEC.com code: 55322



<p>PROPRIETARY NOTE</p> <p>THIS DOCUMENT CONTAINS INFORMATION CONFIDENTIAL AND PROPRIETARY TO SAMTEC, INC. AND SHALL NOT BE REPRODUCED OR TRANSFERRED TO OTHER DOCUMENTS OR DISCLOSED TO OTHERS OR USED FOR ANY PURPOSE OTHER THAN THAT WHICH IT WAS OBTAINED WITHOUT THE EXPRESSED WRITTEN CONSENT OF SAMTEC, INC.</p> <p>DO NOT SCALE DRAWING</p> <p>SHEET SCALE: 1:0.571429</p>		
	<p>520 PARK EAST BLVD, NEW ALBANY, IN 47150 PHONE: 812-944-6733 FAX: 812-948-5047 e-Mail: info@SAMTEC.com code: 55322</p>	
	<p>DESCRIPTION: .050[1.27] SOCKET DISCRETE CABLE ASSEMBLY</p>	
	<p>DWG. NO. SFSSX-XX-XXX-XX-XX.XX-XX-XXX</p>	
<p>BY: GAYNOR 6/12/2008</p>		<p>SHEET 2 OF 3</p>

FIG. 3
 -SR: SINGLE END WITH RETENTION LATCH
 (SFSSX-05-28-X-XX.XX-SR SHOWN)
 (ONLY AVAILABLE ON -05 THRU -30 POS)
 (SAME AS FIG. 1, UNLESS OTHERWISE STATED)

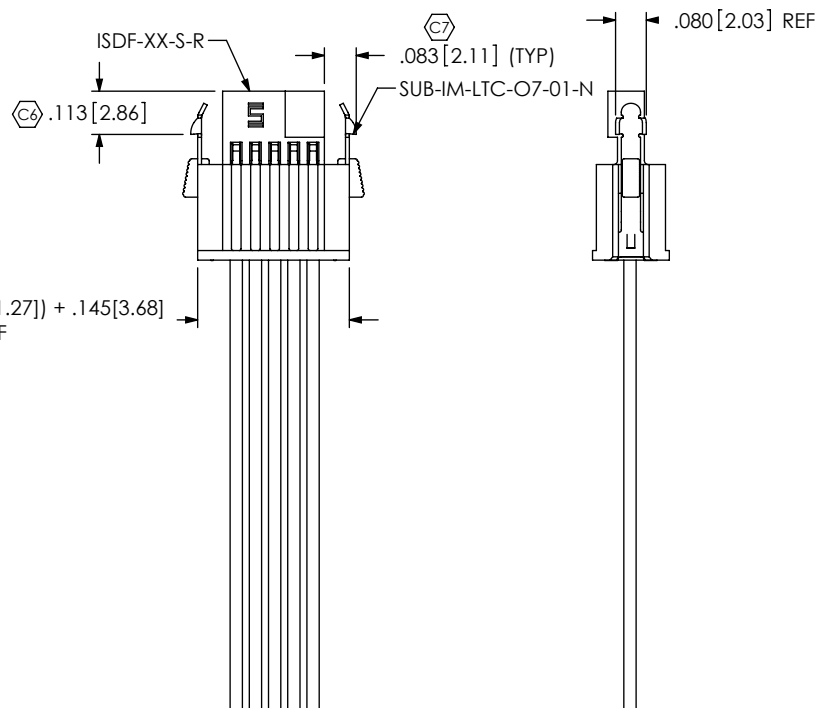
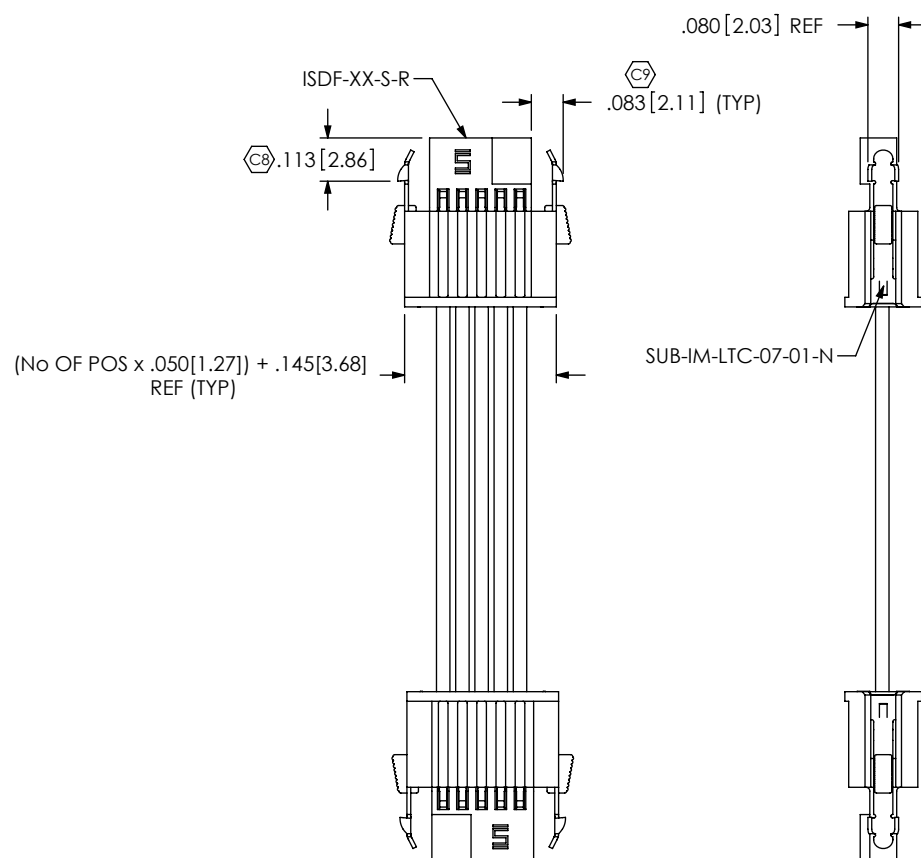


FIG. 4
 -DR: DOUBLE END WITH RETENTION LATCH
 (SFSSX-05-28-X-XX.XX-DR SHOWN)
 (ONLY AVAILABLE ON -05 THRU -30 POS)
 (SAME AS FIG. 1, UNLESS OTHERWISE STATED)



F:\DWG\MISC\MKTG\SFSSX-XX-XXX-XX.XX-XXX-MKT.SLDDRW

SFSS color coded wire sequence (SEE NOTE 10)

pin #	COLOR									
	brown	red	orange	yellow	dk green	violet	gray	white	black	dk blue
	1	2	3	4	5	6	7	8	9	10
	11	12	13	14	15	16	17	18	19	20
	21	22	23	24	25	26	27	28	29	30

PROPRIETARY NOTE

THIS DOCUMENT CONTAINS INFORMATION CONFIDENTIAL AND PROPRIETARY TO SAMTEC, INC. AND SHALL NOT BE REPRODUCED OR TRANSFERRED TO OTHER DOCUMENTS OR DISCLOSED TO OTHERS OR USED FOR ANY PURPOSE OTHER THAN THAT WHICH IT WAS OBTAINED WITHOUT THE EXPRESSED WRITTEN CONSENT OF SAMTEC, INC.

DO NOT SCALE DRAWING

SHEET SCALE: 4:1

samtec

520 PARK EAST BLVD, NEW ALBANY, IN 47150
 PHONE: 812-944-6733 FAX: 812-948-5047
 e-Mail: info@SAMTEC.com code: 55322

DESCRIPTION:
 .050 [1.27] SOCKET DISCRETE CABLE ASSEMBLY

DWG. NO.
SFSSX-XX-XXX-XX-XX.XX-XX-XXX

BY: GAYNOR 6/12/2008 SHEET 3 OF 3

Mouser Electronics

Authorized Distributor

Click to View Pricing, Inventory, Delivery & Lifecycle Information:

[Samtec:](#)

[SFSS-06-28-G-03.25-D-NUS](#)