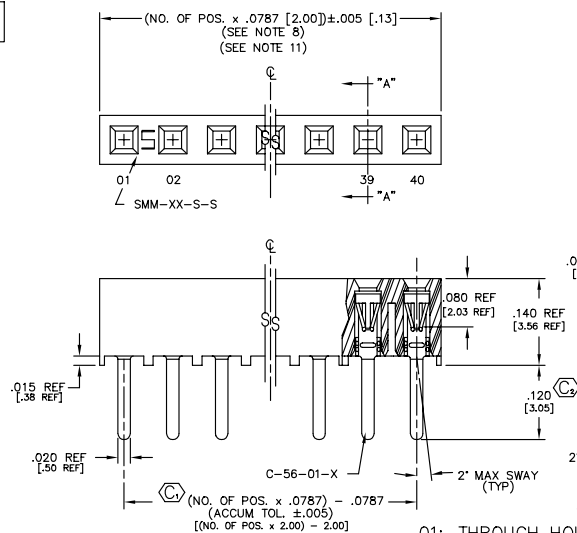
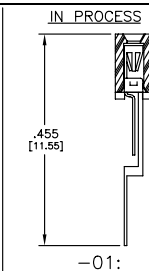


REVISION AP

DO NOT SCALE
FROM THIS PRINT



* PINS INTERLEAVED AND ORIENTED SAME DIRECTION FOR -01 ONLY



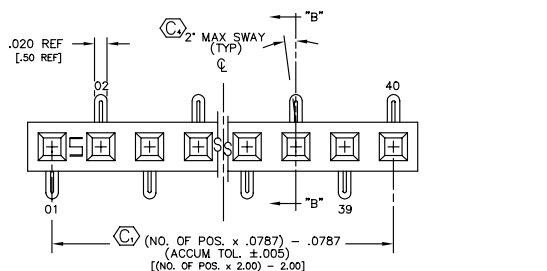
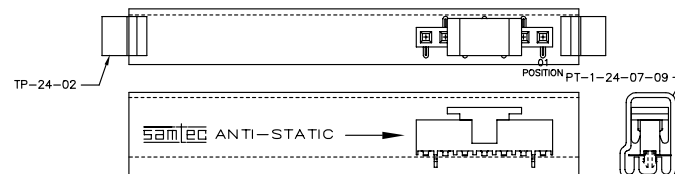
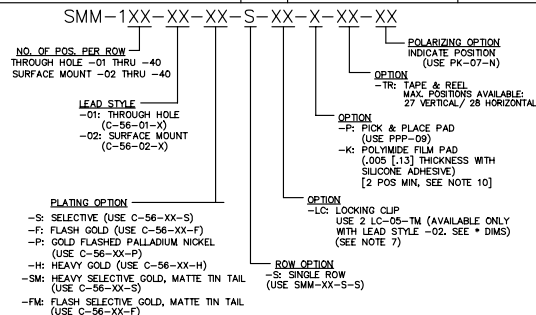
NOTES:

1. RETENTION FORCE IN BODY TO BE: 1 lbs. MIN
2. INSERTION FORCE TO BE: 3.0 oz. MAX.
3. WITHDRAWAL FORCE TO BE: 0.4 oz. MIN.
4. Ⓢ REPRESENTS CRITICAL DIMS. FOR STATISTICAL PROCESS CONTROL.
5. [] DIMS ARE IN METRIC AND ARE NOT CONTROLLING DIMS.
- 6.) SMM-105-01-X THRU SMM-140-01-X MUST USE PT-1-24-01-12.
- 7.) -LC" OPTION FOR A 02 POSITION WILL HAVE ONLY ONE LOCKING CLIP (LC-05-T).
- 8.) "END WALLS" AFTER CUTTING SHOULD BE .017±.005.
- 9.) ALL OPTIONS: PACKAGE POSITIONS -04 THRU -40 IN TUBES. LAYER PACKAGE POSITIONS -02 & -03 WITH NO OPTIONS.
- 10.) -02 THRU -05 POSITION WITH -K OR -P TO BE PACKAGED IN -TR ONLY. -06 THRU -40 POSITION AVAILABLE IN TUBE OR -TR PACKAGING.
- 11.) MAX CUT FLASH: .010[.25]

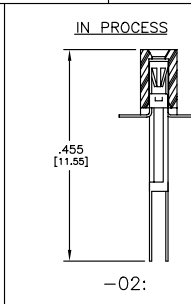
TUBE PACKAGING TABLE

LEAD STYLE	TUBE	PLUG
-01	PT-1-24-01-12	TP-12
-01-P	PT-1-24-02-29	TP-24
-02	PT-1-24-01-16	TP-12
-02-K, -02-LC, -02-LC-K	PT-1-24-02-29	TP-24
-02-P	PT-1-24-07-09	TP-24-02

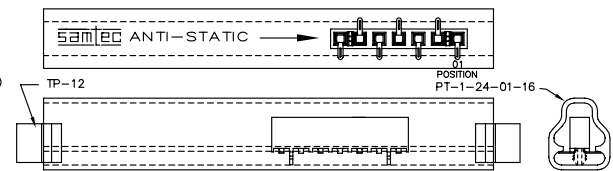
DIMENSIONS ARE IN INCHES	UNLESS OTHERWISE NOTED	TOLERANCES ARE	ANGLES	TITLE: 2 mm SOCKET STRIP (SINGLE ROW)	DWG NO: SMM-1XX-XX-XX-S-XX-X-XX-XX
ONE PLACE DECIMALS: ± .1	THREE PLACE DECIMALS: ± .005	FOUR PLACE DECIMALS: ± .0020	± 1°		SHEET 1 OF 1



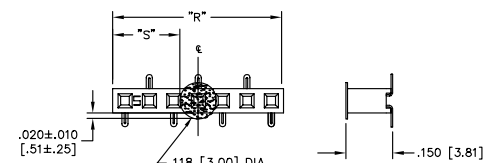
-02: SURFACE MOUNT



PACKAGE PARTS IN TUBE AS SHOWN (POSITION PARTS WITH POS. -01 TOWARD ARROW AS SHOWN)

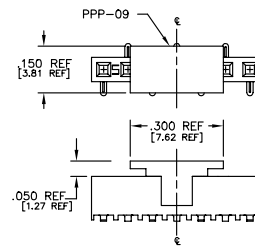


-K: POLYIMIDE FILM PAD [2 POSITION MINIMUM, SEE NOTE 10]



NOTE: "R" = USED MEASURED DIMENSION (REF)
"S" = {("R" - .118 [3.0]) / 2} ± .020 [.51]

1/2 SCALE



-P: PICK AND PLACE PAD (PLACE PPP-09 ABOUT C.L. AS SHOWN)

PROPRIETARY NOTE
THIS PRODUCT CONTAINS PROPRIETARY INFORMATION AND IS NOT TO BE REPRODUCED OR TRANSMITTED IN ANY FORM OR BY ANY MEANS, ELECTRONIC OR MECHANICAL, INCLUDING PHOTOCOPYING, RECORDING, OR BY ANY INFORMATION STORAGE AND RETRIEVAL SYSTEM, WITHOUT PERMISSION IN WRITING FROM SAMTEC.

Mouser Electronics

Authorized Distributor

Click to View Pricing, Inventory, Delivery & Lifecycle Information:

Samtec:

[SMM-128-02-F-S-LC-P](#) [SMM-110-02-SM-S-LC-P](#)