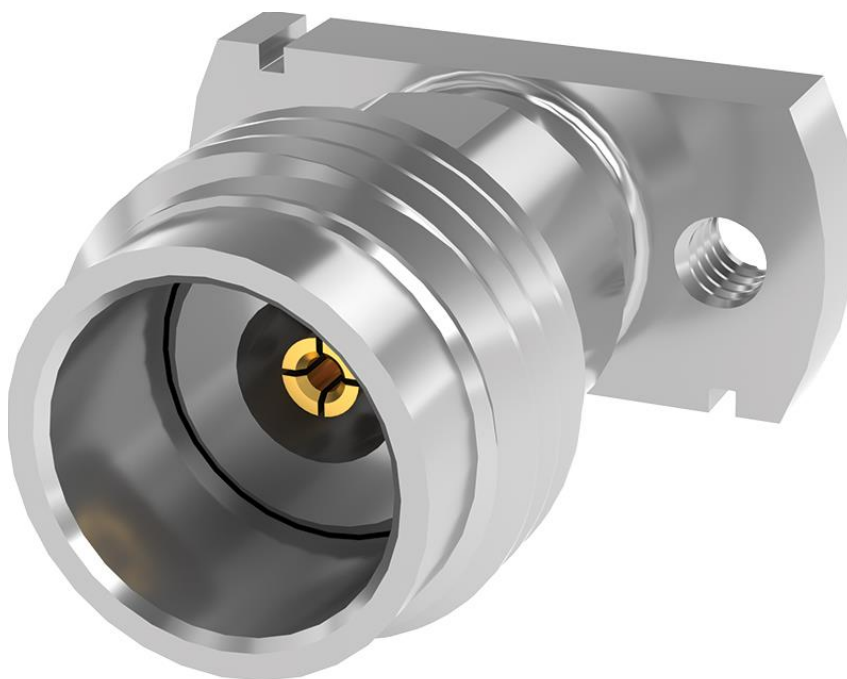


Series: 2.4mm Jack, PCB Compression Mount, 50 Ω , Stripline/Microstrip



240-J-P-EP-ST-XXX-X-X

PACKAGING

- BLANK: INDIVIDUALLY BAGGED
- B: FULL TRAY (QTY \geq 100)

OPTION

- 1: OPTION 1 (WITHOUT SCREWS)
- 2: OPTION 2 (FOR PCB THICKNESS .016" TO .125")
- 3: OPTION 3 (FOR PCB THICKNESS .069" TO .178")

TERMINATION

- CM: COMPRESSION MOUNT STRIPLINE
- CMM: COMPRESSION MOUNT MICROSTRIP

MATERIAL AND FINISHES

Connector part	Material	Finish	
Shell	Stainless Steel	Passivated	
Bushing	Stainless Steel	Passivated	
Pin	Beryllium Copper	50 μ " Gold over Nickel	
Insulator	Ultem 1000	N/A	

Series: 2.4mm Jack, PCB Compression Mount, 50 Ω , Stripline/Microstrip

ELECTRICAL DATA

Impedance	50 Ohm
Frequency Range	DC to 50 GHz
VSWR ¹	DC to 26.5 GHz: 1.10:1 max 26.5 GHz to 40 GHz: 1.20:1 max 40 GHz to 50 GHz: 1.30:1 max
Insertion Loss ¹	$0.03\sqrt{F(GHz)} \text{ dB max}$
LLCR - Center Contact	<6.0 m Ω
LLCR - Outer Contact	<2.0 m Ω
Dielectric Withstanding Voltage (DWV)	650 VRMS Min
Insulation Resistance	5,000 M Ω Min
Voltage Rating @ Sea Level	220 VRMS Max

¹ per connector, when tested in pairs, back-to-back with a coaxial fixture

MECHANICAL DATA

Interface	I.A.W. IEC 61169 fig. 5	
Recommended Mating Coupler Torque	0.9-1.13 N-m (8-10 in-Lb.)	
Durability	500 Cycles minimum	
Force to Engage / Disengage	$\leq 0.23 \text{ N-m (2.0 in-Lb.) Max Torque}$	
Center Contact Retention	17.8 N (4.0 Lb.) Minimum Axial	
Mass	Compression Mount	1.78g (0.063 oz.)
	Compression Mount, Microstrip	1.89g (0.067 oz.)

ENVIRONMENTAL DATA

Temperature Range	-65 to +165°C
Thermal Shock	EIA-364-32, -55 to +125°C, 100 Cycles
Vibration	EIA-364-28, Condition V-B, 2 hrs/axis
Mechanical Shock	EIA-364-27, Condition G

REFERENCED DOCUMENTS

Configuration and Features	DRAWING
Compression Mount	240-J-P-EP-ST-CM-X-X
Compression Mount Microstrip	240-J-P-EP-ST-CMM-X-X



Series: 2.4mm Jack, PCB Compression Mount, 50 Ω , Stripline/Microstrip

USE OF PRODUCT SPECIFICATION SHEET

This Product Specification Sheet ("PSS") is a brief summary of information related to the Product identified. As a summary, it should only be used for the limited purpose of considering the purchase/use of Product. This PSS is the property of Samtec, Inc. ("Samtec") and contains proprietary information of Samtec, our various licensors, or both. Samtec does not grant express or implied rights or license under any patent, copyright, trademark or other proprietary rights and the use of the PSS for building, reverse engineering or replication is strictly prohibited. By using the PSS, the user agrees to not infringe, directly or indirectly, upon any intellectual property rights of Samtec and acknowledges that Samtec, our various licensors, or both own all intellectual property therein. The PSS is presented "AS IS". While Samtec makes every effort to present excellent information, the PSS is only provided as a guideline and does not, therefore, warrant it is without error or defect or that the PSS contains all necessary and/or relevant information about the Product. The user agrees that all access and use of the PSS is at its own risk. **NO WARRANTIES EXPRESSED OR IMPLIED, INCLUDING ANY WARRANTY OF MERCHANTABILITY, FITNESS FOR A PARTICULAR PURPOSE OR OF ANY KIND WHATSOEVER ARE PROVIDED**