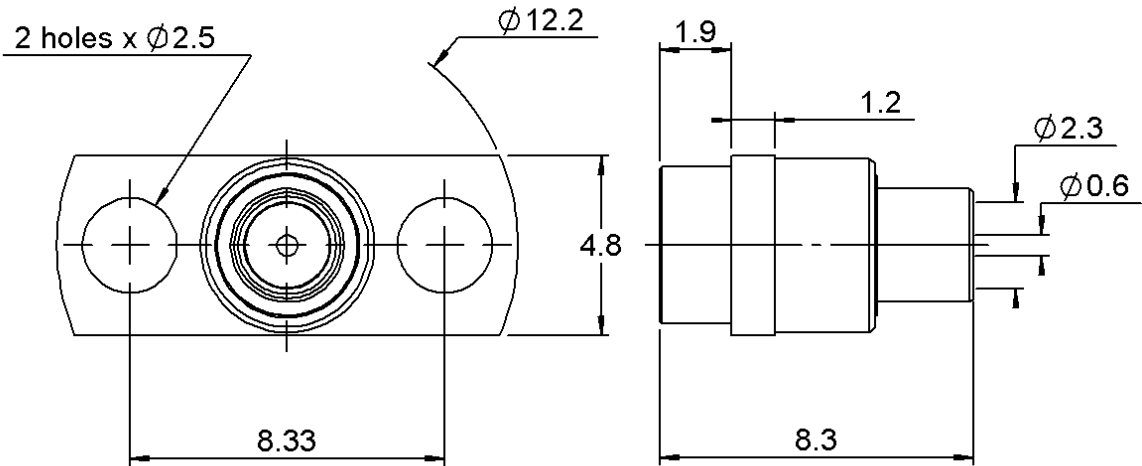
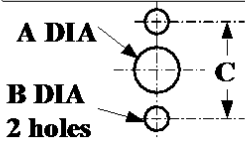


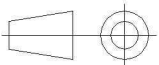
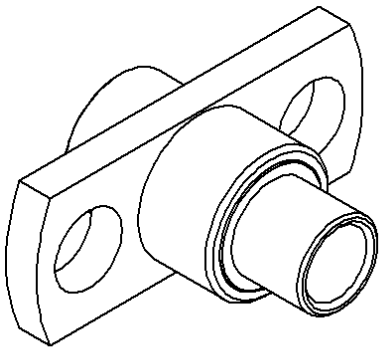
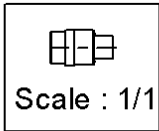
| | | | |
|----------|-------------|------------|------------------------|
| PAGE 1/3 | ISSUE 1437C | SERIES SMP | PART NUMBER R222252022 |
|----------|-------------|------------|------------------------|



PANEL CUT OUT



| | mm | |
|---|------|------|
| | Maxi | mini |
| A | 4.8 | 4.7 |
| B | 2.6 | 2.5 |
| C | 8.38 | 8.28 |



All dimensions are in mm.

| COMPONENTS | MATERIALS | PLATING (µm) |
|----------------|-------------------------|---------------------------------|
| Body | STAINLESS STEEL + BRASS | PASSIVATED+GOLD1.3 OVER NICKEL2 |
| Center contact | BERYLLIUM COPPER | GOLD 1.27 OVER NICKEL 1.27 |
| Outer contact | - | - |
| Insulator | PTFE | - |
| Gasket | - | - |
| Others parts | - | - |
| - | - | - |
| - | - | - |

PAGE **2/3**

ISSUE **1437C**

SERIES **SMP**

PART NUMBER **R22252022**

PACKAGING

| Standard | Unit | Other |
|------------|-------------------|-------------------|
| 100 | Contact us | Contact us |

ELECTRICAL CHARACTERISTICS

| | | |
|---------------------------------|----------------------|--------------------------|
| Impedance | 50 | Ω |
| Frequency | 0-40 | GHz |
| VSWR | 1.50 + 0,0000 | x F(GHz) Maxi |
| Insertion loss | .12 | \sqrt{F} (GHz) dB Maxi |
| RF leakage | - (| - F(GHz)) dB Maxi |
| Voltage rating | 335 | Veff Maxi |
| Dielectric withstanding voltage | 500 | Veff mini |
| Insulation resistance | 5000 | M Ω mini |

MECHANICAL CHARACTERISTICS

| | | |
|----------------------------|---------------|-------------|
| Center contact retention | | |
| Axial force – Mating End | NA | N mini |
| Axial force – Opposite end | NA | N mini |
| Torque | NA | N.cm mini |
| Recommended torque | | |
| Mating | NA | N.cm |
| Panel nut | NA | N.cm |
| Clamp nut | NA | N.cm |
| A/F clamp nut | 0,0000 | mm |
| Mating life | 100 | Cycles mini |
| Weight | 0,8000 | g |

ENVIRONMENTAL

| | | |
|-----------------------|-----------------|--------------------|
| Operating temperature | -65/+165 | $^{\circ}\text{C}$ |
| Hermetic seal | NA | Atm.cm3/s |
| Panel leakage | NA | |

SPECIFICATION

CABLE ASSEMBLY

| Stripping | a | b | c | d | e | f |
|-----------|------------|----------|----------|----------|----------|----------|
| mm | 1,3 | 0 | 0 | 0 | 0 | 0 |

Assembly instruction:

Recommended cable(s)

RG 405
KS 1

Characteristics indicated on this data sheet are those that can be achieved with the highest performance cable. Intrinsic limitations of the cable may diminish the performance of the assembly

Cable retention

| | | |
|------------|------------|--------|
| - pull off | 200 | N mini |
| - torque | NA | N.cm |

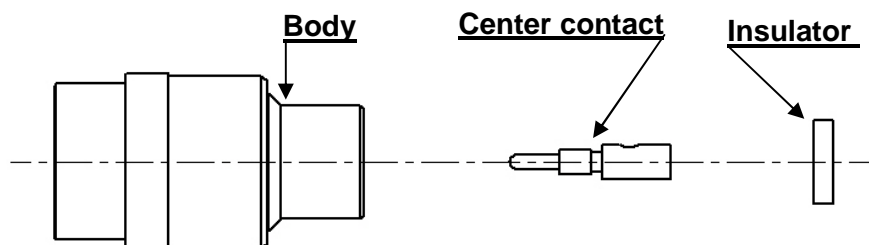
TOOLING

| Part Number | Description | Hexagon |
|-------------|------------------------------|---------|
| R282051000 | STRIPPING TOOL | |
| R282062010 | POINTER GAUGE | |
| R282743100 | POSITIONER FOR SOLDERING SMP | |
| R282744254 | POSITIONER FOR SOLDERING SMP | |
| R282862120 | SOLDER GAUGE THCK 1.83 | |
| R282740000 | SOLDERING MOUNTING | |

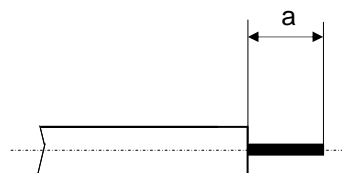
OTHER CHARACTERISTICS

RF leakage -80dB DC-3 GHz
-65dB 3-26.5 GHz
Compliant with MIL-STD-348

COMPONENTS



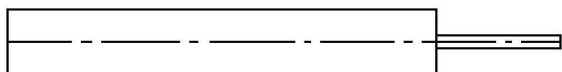
STRIPPING CABLES



We recommend a thermal preconditioning cable

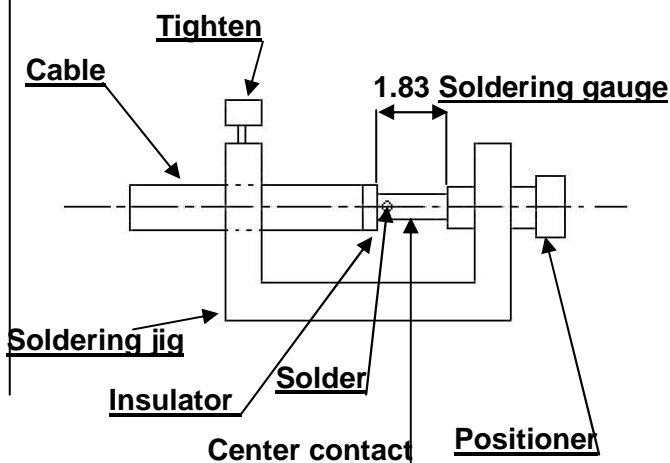
1

Strip the dielectric of the cable .
Clean the cable .
Soldering 180°C
Temperature stoking do not exceeded 250°C



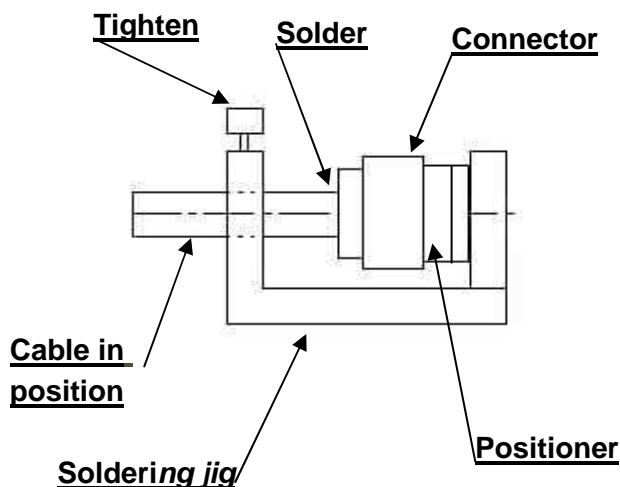
2

Screw the positioner onto the soldering jig.
Slide the center contact onto the cable inner conductor against insulator.
Fit the cable assembly onto the soldering jig.
Insert the soldering gauge
Tighten.
Take off the soldering gauge.
and solder the contact.



3

After cooling remove cable assembly from the jig.
Insert cable+centre contact in the connector.
Slide the positioner in the connector interface.
Slide cable into the connector body until it bottoms against.
Slide positioner into the assembly.
Tighten.
Solder the body onto the cable.
After cooling remove cable assembly from the jig.



Mouser Electronics

Authorized Distributor

Click to View Pricing, Inventory, Delivery & Lifecycle Information:

Radial:

[R222252022](#)