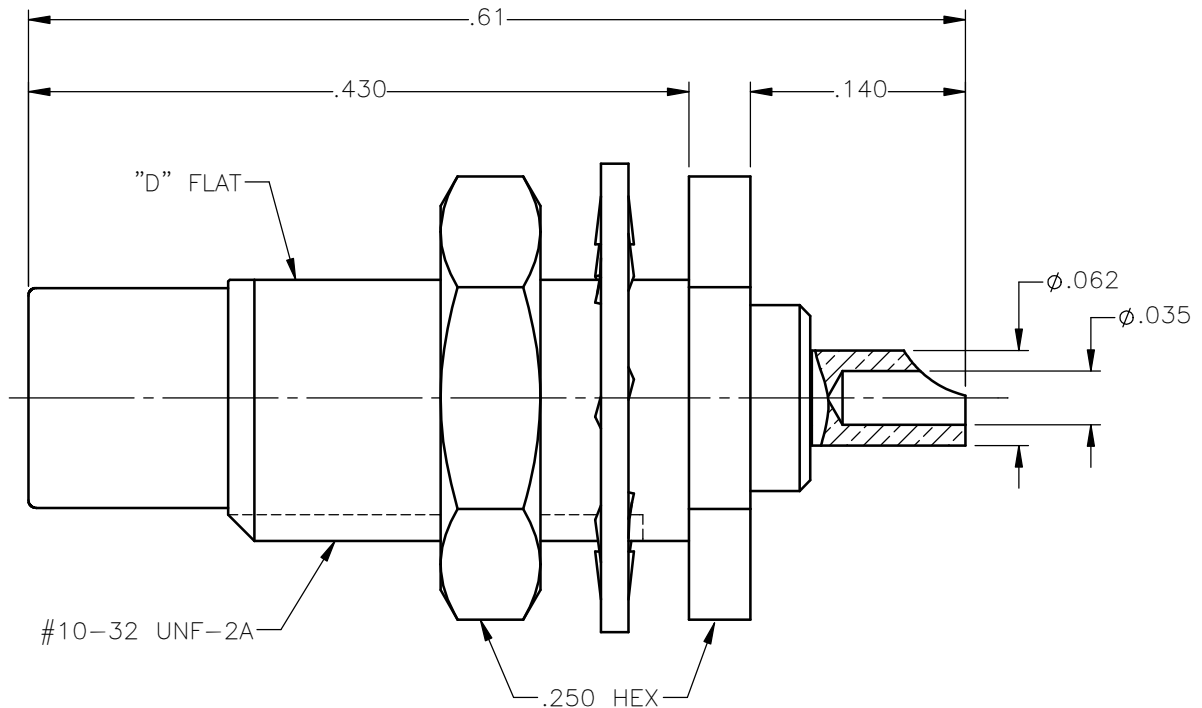


REVISIONS			
REV.	DESCRIPTION	DATE	APPROVED
A	INITIAL RELEASE	12/20/17	J.S.





NOTES:

MATERIALS:

1. LOCKWASHER = PHOSPHOR BRONZE PER ASTM B139, COPPER ALLOY C53400, TEMPER H04.
2. INSULATOR = VIRGIN WHITE TEFLON PER ASTM D1710, GRADE 1, TYPE I, CLASS "B".
3. ALL OTHER METAL PARTS = BRASS PER ASTM B16, ALLOY C36000, TEMPER H02.

FINISHES:

1. CONTACT = GOLD PLATE PER ASTM B488-01, TYPE II, 50µin MIN, GRADE C, OVER 100 TO 200µin STRESS FREE SULFAMATE NICKEL PER QQ-N-290.
2. ALL OTHER METAL PARTS = NICKEL PLATE PER AMS-QQ-N-290, CLASS 1, GRADE G, EXCEPT 100 TO 200µin THICK OVER 50 TO 100µin THICK COPPER PER AMS 2418.

UNLESS OTHERWISE SPECIFIED DIMENSIONS ARE IN INCHES TOLERANCES ON		DWN: J.S.	DATE 12/20/17	 Property of Radiall This document cannot be reproduced or communicated to a third party without prior written permission of RADIALL.	
		CHKD: C.E.	DATE 12/20/17		
DECIMAL	ANGLE	APVD: J.M.	DATE 12/20/17	SMC STRAIGHT MALE JACK BULKHEAD MOUNT SOLDER POT RECEPTACLE	
REFERENCE:		MATERIALS & FINISHES: SEE NOTES			
ORIGINATED: J.S. DATE: 12/20/17		SIZE A	FSCM NO. 19505	DWG NO. 1004-7511-000	REV A
		SCALE 8:1	THIRD ANGLE PROJECTION		SHEET 1 OF 1

1004-7511-000

Mouser Electronics

Authorized Distributor

Click to View Pricing, Inventory, Delivery & Lifecycle Information:

Radial:

[1004-7511-000](#)