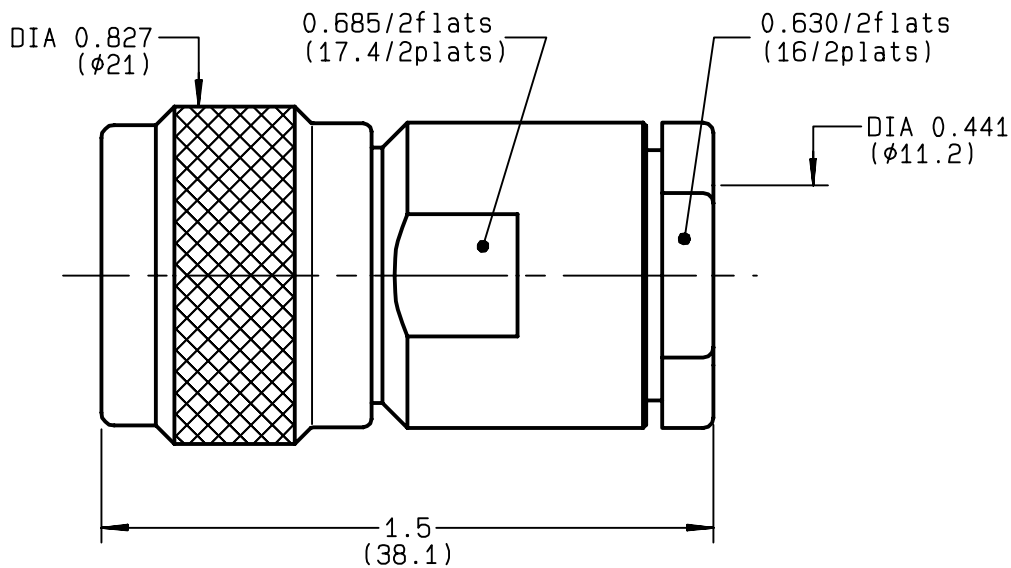


STRAIGHT PLUG CLAMP TYPE
CABLE 10+11/75
R162.017.000
SERIES N 75


NOMINAL IMPEDANCE	75	Ω
FREQUENCY RANGE	0-1.5	GHz
TEMPERATURE RATING	-55/+155	$^{\circ}\text{C}$
V.S.W.R	1.06 +	$\times F(\text{GHz})\text{Maxi}$
RF INSERTION LOSS	0.15	$\sqrt{F}(\text{GHz}) \text{ dB Maxi}$
VOLTAGE RATING	1400	$V_{\text{eff}} \text{ Maxi}$
DIELECTRIC WITHSTANDING VOLTAGE	2500	$V_{\text{eff}} \text{ Mini}$
INSULATION RESISTANCE	5000	$M \Omega \text{ Mini}$
HERMETIC SEAL	NA	$\text{Atm.cm}^3/\text{s}$
LEAKAGE (pressurized only)	NA	
MECHANICAL DURABILITY	500	Cycles
WEIGHT	49.1	gr
SPECIFICATION		

CABLES : **KX 8**
RG 11
RG 144
RG 216

OTHERS CHARACTERISTICS

CABLE RETENTION	300	N Mini
CENTER CONTACT RETENTION		
Axial force - mating end	NA	N Mini
Axial force - opposite end	NA	N Mini
Torque	NA	cm.N Mini
RECOMMENDED TORQUES		
Mating	130	cm.N
Panel nut	NA	cm.N
Clamp nut	800	cm.N

CONNECTOR PARTS	MATERIALS	FINISH	(all values are given) in micrometers
BODY	BRASS	BBR 2	
OUTER CONTACT	BRASS	BBR 2	
CENTER CONTACT	BRASS	GOLD 0.5 OVER NICKEL 2	
INSULATOR	SILICONE RUBBER	-	
GASKET	PTFE	-	
OTHERS PIECES	BRASS	BBR 2	

BONOMINI

ISSUE
9813D01
CREATION DATE
26/10/1993
FILE PART-NUMBER
EPC 96-07

RADIALL®

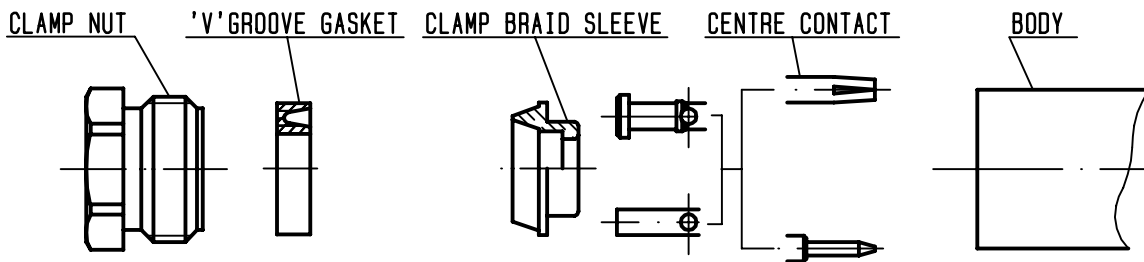
The information given here is subject to change without notice.
 Design changes may be in order to improve the product .

Connect to the future



R162.017.000

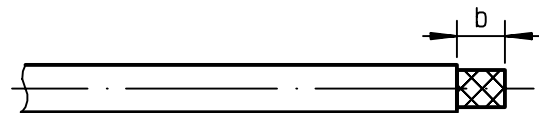
ISSUE **9813D01** SERIES **N 75**



①

Strip the cable .

-
-
-
-

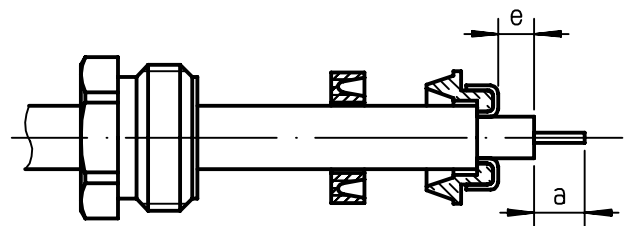


Stripping	a	b	c	d	e
inch	0.197	0.335	0	0	0.059
mm	5	8.5			1.5

②

Slide the clamp nut and the 'V' groove gasket onto the cable .
Slide clamp braid sleeve over braid .
Fold back braid and trim off surplus braid .
Trim back dielectric as shown .

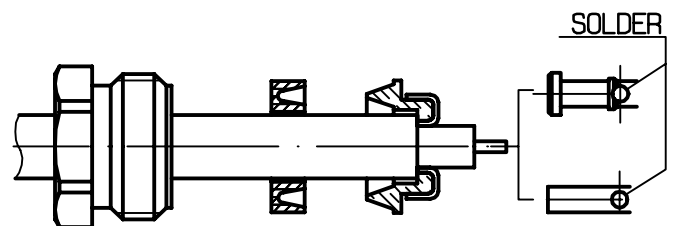
-



③

Solder the cable inner conductor into centre contact .

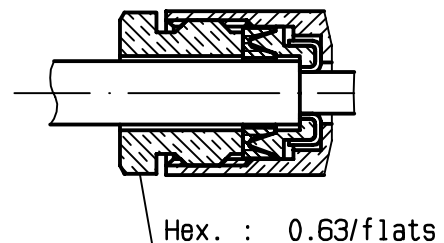
-
-
-
-



④

Screw sub-assembly into the connector body .
(recommended coupling torque 70.87 in.lb)

-
-



Mouser Electronics

Authorized Distributor

Click to View Pricing, Inventory, Delivery & Lifecycle Information:

[Radial:](#)

[R162017000W](#)