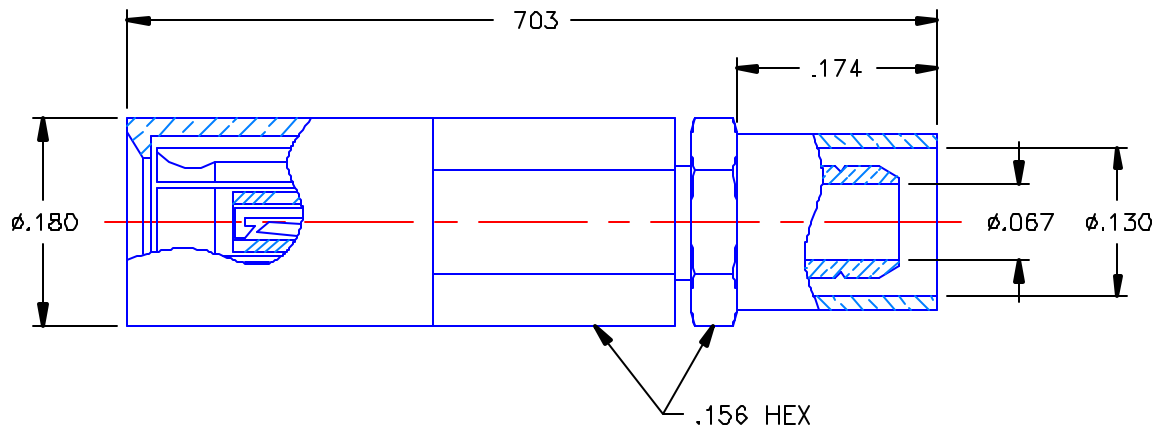


REVISIONS			
REV	DESCRIPTION	DATE	APPROVED
—	INITIAL RELEASE	10/19/04	A.D.M.
A	ECO #5670	01/18/05	A D M.

PROPRIETARY INFORMATION  
NOT TO BE RELEASED  
WITHOUT WRITTEN PERMISSION  
FROM AN AUTHORIZED  
REPRESENTATIVE OF  
APPLIED ENGINEERING PRODUCTS




#### NOTES:

#### MATERIALS:

1. BODY & CONTACT = BERYLLIUM COPPER PER ASTM B196, ALLOY C17300, TEMPER TD04.
2. INSULATORS = VIRGIN WHITE TEFLON PER ASTM D1710, GRADE 1, TYPE I, CLASS "B".
3. SLEEVE & CRIMP NUT = BRASS PER ASTM B16, ALLOY C36000, TEMPER H02.
4. CRIMP SLEEVE = SEAMLESS LOWLEAD BRASS TUBE, ALLOY 330, SOFT ANNEAL TEMPER, .025/.060 GRAIN SIZE OR SEAMLESS COPPER TUBE PER ASTM B75, TYPE C12000, TEMPER: LIGHT ANNEAL 050 EXCEPT YIELD STRENGTH.
5. SHRINK TUBE = RNF100 (NOT SHOWN)

#### FINISHES:

1. CONTACT = GOLD PLATE PER MIL-G-45204, TYPE II, CLASS 1, GRADE C, OVER .00010 TO .00020 STRESS FREE SULFAMATE NICKEL PER QQ-N-290.
2. ALL OTHER METAL PARTS = GOLD PLATE PER MIL-G-45204, TYPE II, CLASS D, GRADE C, OVER .00010 TO .00020 COPPER STRIKE PER MIL-C-14550.

UNLESS OTHERWISE SPECIFIED DIMENSIONS ARE IN INCHES TOLERANCES ON		DWN. A D.M.	DATE 10/15/04	 <b>APPLIED ENGINEERING PRODUCTS</b> 104 John W. Murphy Dr. New Haven, CT 06513
		CHKD: D.N.	DATE 10/19/04	
DECIMAL	ANGLE	APVD: D.J.C.	DATE 10/19/04	<b>SSMB STRAIGHT FEMALE PLUG CRIMP TYPE FOR RG-316DS CABLE</b>
REFERENCE:		MATERIALS & FINISHES:		SIZE A
ORIGINATOR: A.D.M. DATE: 10/15/04		SEE NOTES		FSCM NO. 19505
				DWG. NO. 7202-1572-108
				REV A
		SCALE 6:1		SHEET 1 OF 1

7202-1572-108

# Mouser Electronics

Authorized Distributor

Click to View Pricing, Inventory, Delivery & Lifecycle Information:

Radial:

[7202-1572-108](tel:7202-1572-108)