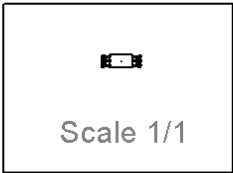
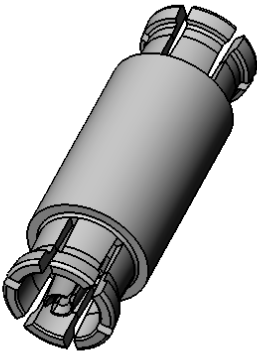
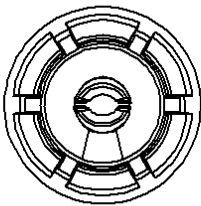
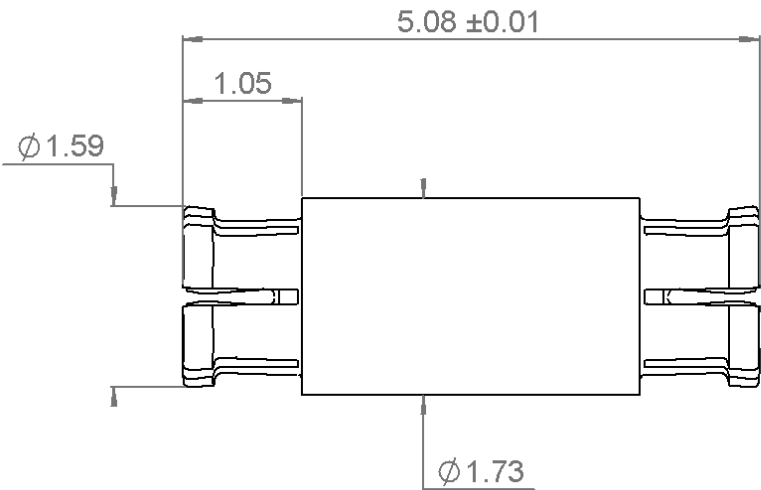
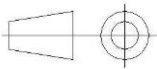


PAGE 1/4	ISSUE 12-03-19C	SERIES SMPW	PART NUMBER R218705020
----------	-----------------	-------------	------------------------



All dimensions are in mm. Tolerances according ISO 2768 m-H



COMPONENTS	MATERIALS	PLATING (µm)
Body	BERYLLIUM COPPER	GOLD OVER NICKEL
Center contact	BERYLLIUM COPPER	GOLD OVER NICKEL
Outer contact		
Insulator	PEEK	
Gasket		
Others parts		
-	-	-
-	-	-

PAGE 2/4

ISSUE 12-03-19C

SERIES SMPW

PART NUMBER R218705020

PACKAGING

Standard	Unit	Other
100	Contact us	Contact us

ELECTRICAL CHARACTERISTICS

Impedance		50	Ω
Frequency		0-100	GHz
VSWR	See* +	0,0000	x F(GHz) Maxi
Insertion loss		0.055	√F(GHz) dB Maxi
RF leakage	- (70**	- F(GHz) dB Maxi
Voltage rating		125	Veff Maxi
Dielectric withstanding voltage		250	Veff mini
Insulation resistance		3500	MΩ mini

MECHANICAL CHARACTERISTICS

Center contact retention			
Axial force – Mating End		5.8	N mini
Axial force – Opposite end		5.8	N mini
Torque		NA	N.cm mini

Recommended torque			
Mating		NA	N.cm
Panel nut		NA	N.cm

Mating	100	Cycles mini Full-detent
	500	Cycles Smooth-bore

Weight	0,0500	g
--------	--------	---

ENVIRONMENTAL

Operating temperature	-40/+125	°C
Hermetic seal	NA	Atm.cm3/s
Panel leakage	NA	

SPECIFICATION

OTHER CHARACTERISTICS

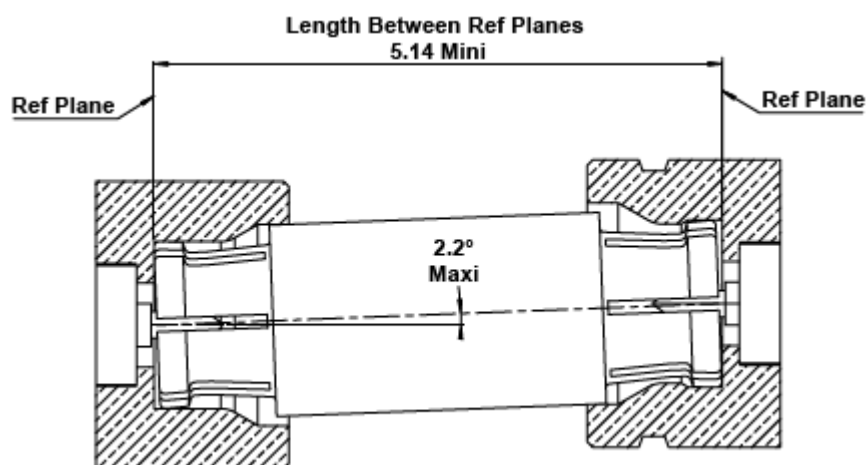
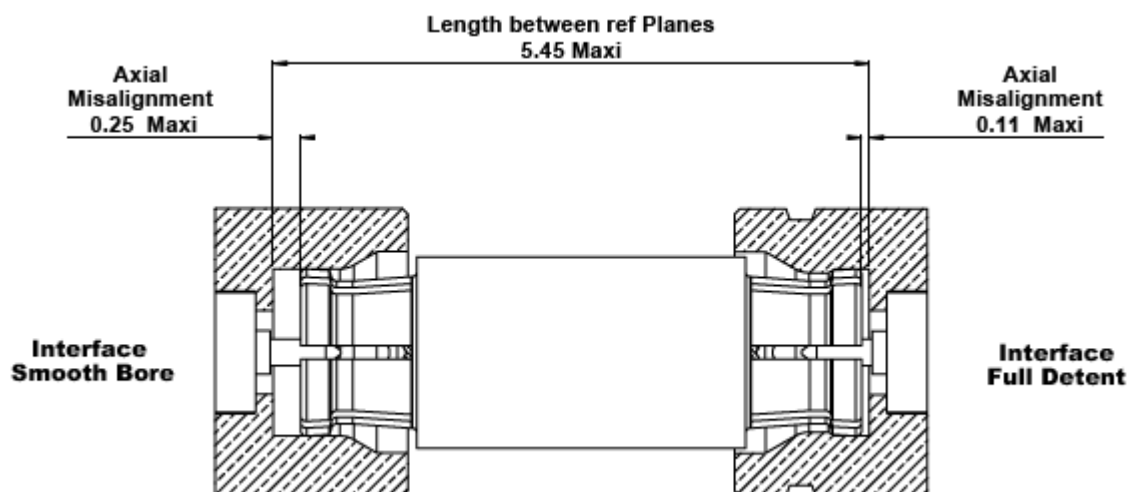
Assembly instruction:

Others:

*1.1(DC to 26.5Ghz) 1.25(26.5 to 65Ghz)

**DC to 40 Ghz

MISALIGNMENT AXIAL AND RADIAL



PAGE 4/4

ISSUE **12-03-19C**

SERIES **SMPW**

PART NUMBER **R218705020**

PACKAGING

100 PER BOX



10 Bullets per cavity

Mouser Electronics

Authorized Distributor

Click to View Pricing, Inventory, Delivery & Lifecycle Information:

Radial:

[R218705020](#)