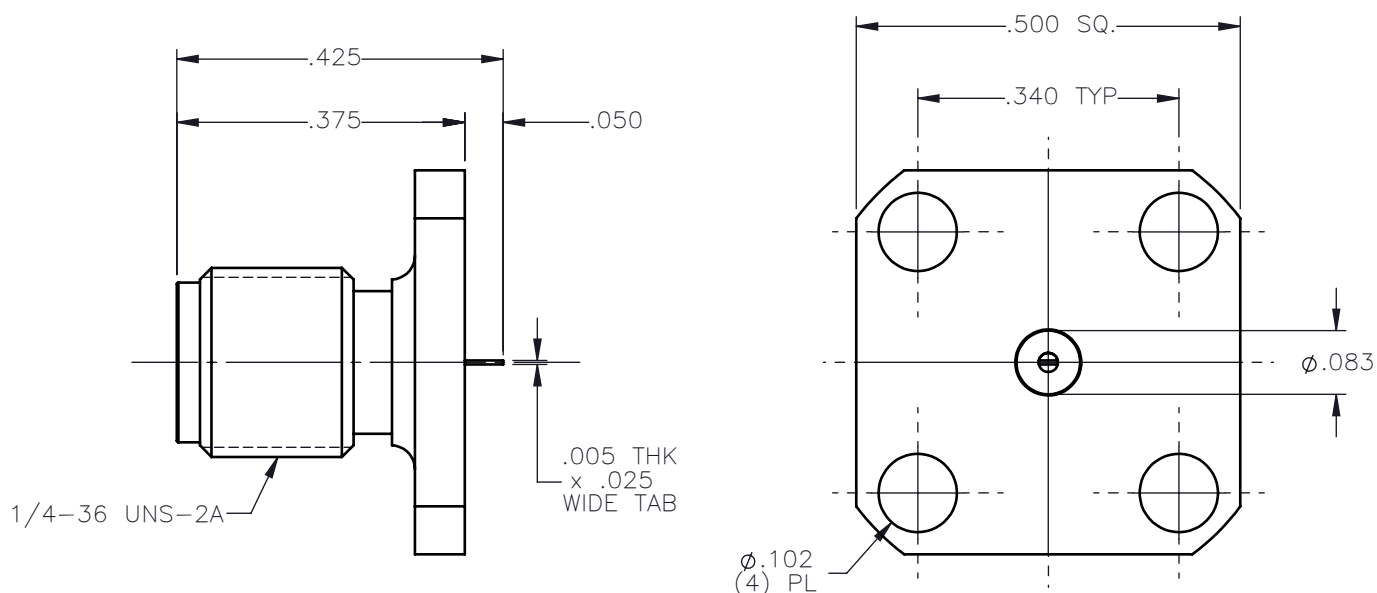


REVISIONS			
REV.	DESCRIPTION	DATE	APPROVED
A	INITIAL RELEASE	05/04/16	N.D.






NOTES:

MATERIALS:

1. BODY = STAINLESS STEEL PER ASTM A582, ALLOY 303, CONDITION "A".
2. INSULATOR = VIRGIN WHITE TEFLON PER ASTM D1710, GRADE 1, TYPE I, CLASS "B".
3. CONTACT = BERYLLIUM COPPER PER ASTM B196, ALLOY C17300, TEMPER TD04.

FINISHES:

1. BODY = GOLD PLATE PER ASTM B488-11, TYPE II, 30μin MIN, GRADE C, OVER 50 TO 100μin STRESS FREE NICKEL PER AMS-QQ-N-290.
2. CONTACT = GOLD PLATE PER ASTM B488-11, TYPE II, 50μin MIN, GRADE C, OVER 100 TO 200μin STRESS FREE SULFAMATE NICKEL PER AMS-QQ-N-290.

UNLESS OTHERWISE SPECIFIED DIMENSIONS ARE IN INCHES TOLERANCES ON		DWN: N.D.	DATE 05/04/16	<div><div>Property of Radiall This document cannot be reproduced or communicated to a third party without prior written permission of RADIALL.</div></div> <div>SMA STRAIGHT JACK 4 HOLE FLANGE MOUNT TAB CONTACT</div>	
		CHKD: D.N.	DATE 05/04/16		
DECIMAL	ANGLE	APVD: J.M.	DATE 05/04/16		
REFERENCE:		MATERIALS AND FINISHES: SEE NOTES			
ORIGINATED: N.D. DATE: 05/04/16		SIZE A	FSCM NO. 19505	DWG NO. 9114—1113—000	REV A
		SCALE 4:1		THIRD ANGLE PROJECTION	 SHEET 1 OF 1

9114-1113-000

Mouser Electronics

Authorized Distributor

Click to View Pricing, Inventory, Delivery & Lifecycle Information:

Radial:

[9114-1113-000](#)