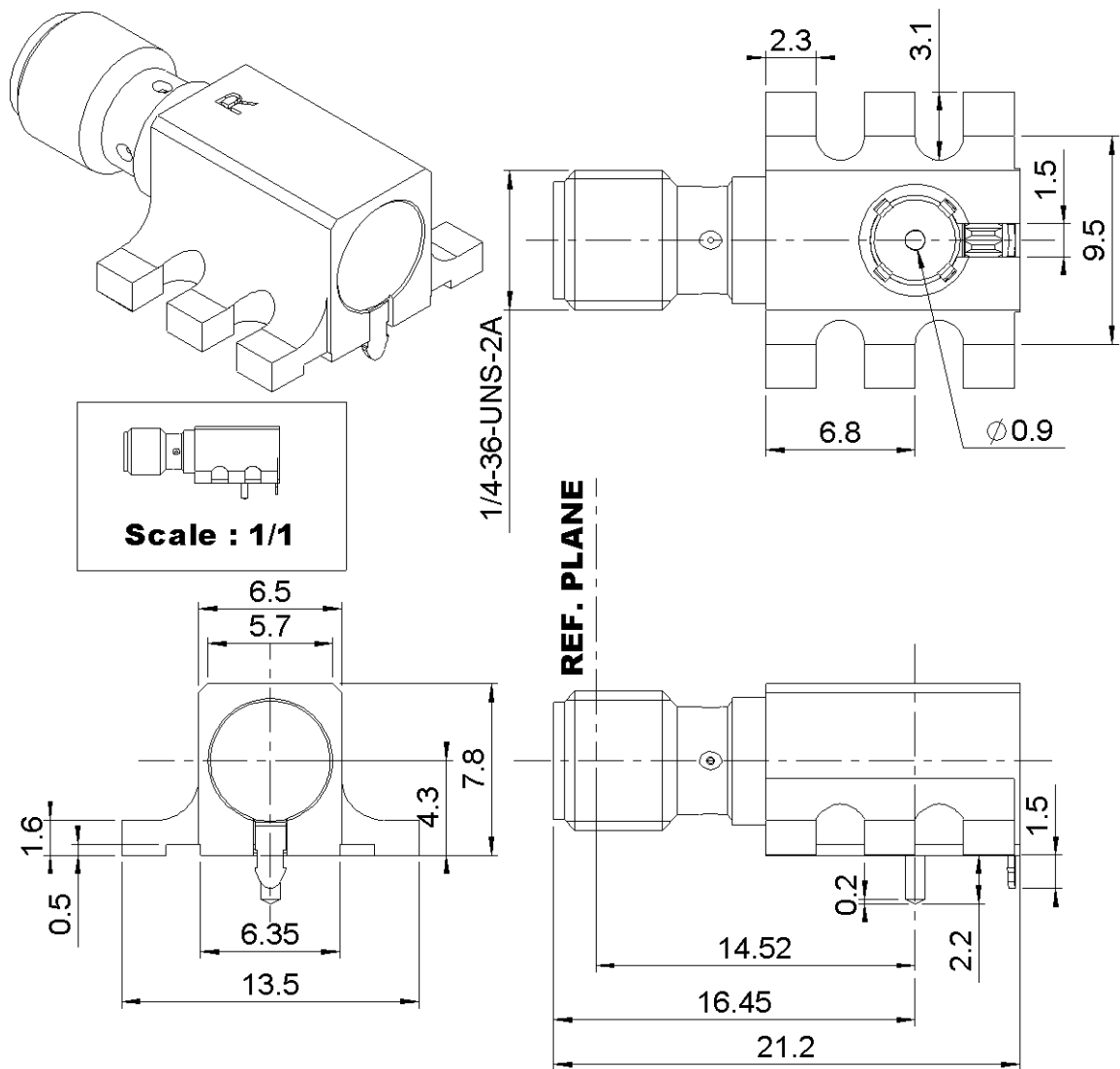
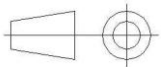


PAGE 1/5	ISSUE 1435D	SERIES SMA-COM	PART NUMBER R124682820
----------	-------------	----------------	------------------------



All dimensions are in mm.



COMPONENTS	MATERIALS	PLATING (μm)
Body	BRASS	NPGR
Center contact	BERYLLIUM COPPER	GOLD OVER COPPER
Outer contact		
Insulator	PTFE	
Gasket		
Others parts	BRASS	GOLD OVER COPPER
.	.	.
.	.	.

PAGE 2/5

ISSUE **1435D**

SERIES **SMA-COM**

PART NUMBER **R124682820**

## PACKAGING

Standard	Unit	Other
<b>250</b>	<b>Contact us</b>	<b>Contact us</b>

## ELECTRICAL CHARACTERISTICS

Impedance	<b>50</b>	$\Omega$
Frequency	<b>0-18</b>	GHz
VSWR	<b>0.0000</b>	x F(GHz) Maxi
Insertion loss	<b>0.07</b>	$\sqrt{F}$ (GHz) dB Maxi
RF leakage	<b>90</b>	- F(GHz) dB Maxi
Voltage rating	<b>350</b>	Veff Maxi
Dielectric withstanding voltage	<b>1000</b>	Veff mini
Insulation resistance	<b>5000</b>	M $\Omega$ mini

## MECHANICAL CHARACTERISTICS

Center contact retention		
Axial force – Mating End	<b>27</b>	N mini
Axial force – Opposite end	<b>27</b>	N mini
Torque	<b>NA</b>	N.cm mini
Recommended torque		
Mating	<b>60</b>	N.cm
Panel nut	<b>NA</b>	N.cm
Mating life	<b>100</b>	Cycles mini
Weight	<b>5.7120</b>	g

## ENVIRONMENTAL

Operating temperature	<b>-65/+165</b>	°C
Hermetic seal	<b>NA</b>	Atm.cm3/s
Panel leakage	<b>NA</b>	

## SPECIFICATION

**1301-RNT 403 054 / 003 Rev. D**

## OTHER CHARACTERISTICS

Assembly instruction:

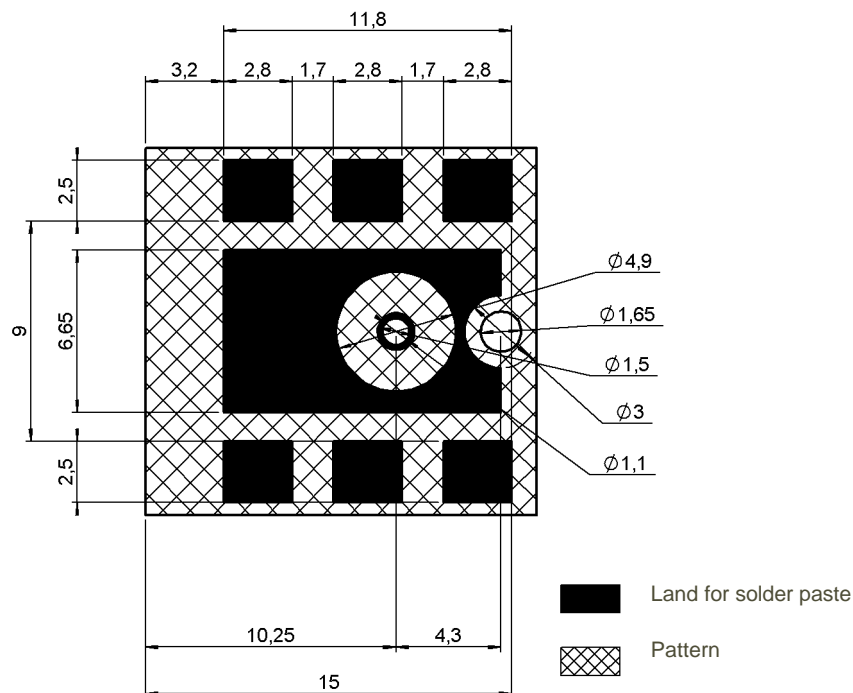
Others:

**\*Coaxial transmission line only**  
**1.15 to 2GHz**

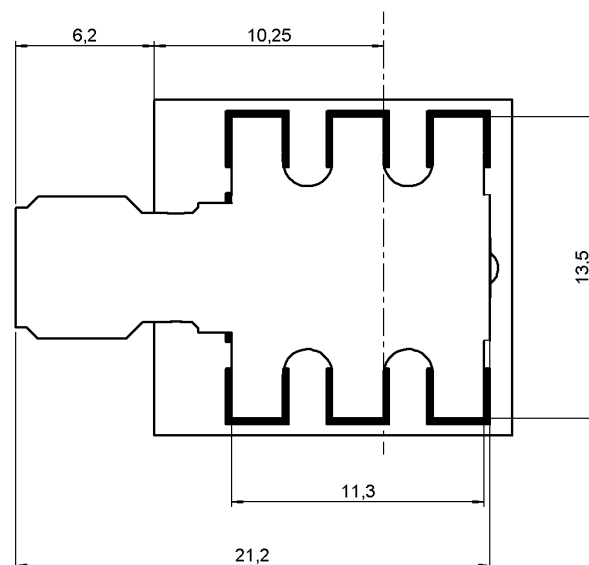
## SMA SERIES - INFORMATION

Coplanar line : pattern and signal are on the same side . Thickness of PCB : .063(1.6mm)

The material of PCB is the epoxy resin of glass fabrics bacs . (Er = 4.8) . The solder resist should be printed except for the land pattern on the PCB .



## SHADOW OF SMA RECEPTACLE FOR VIDEO CAMERA



PAGE 4/5

ISSUE 1435D

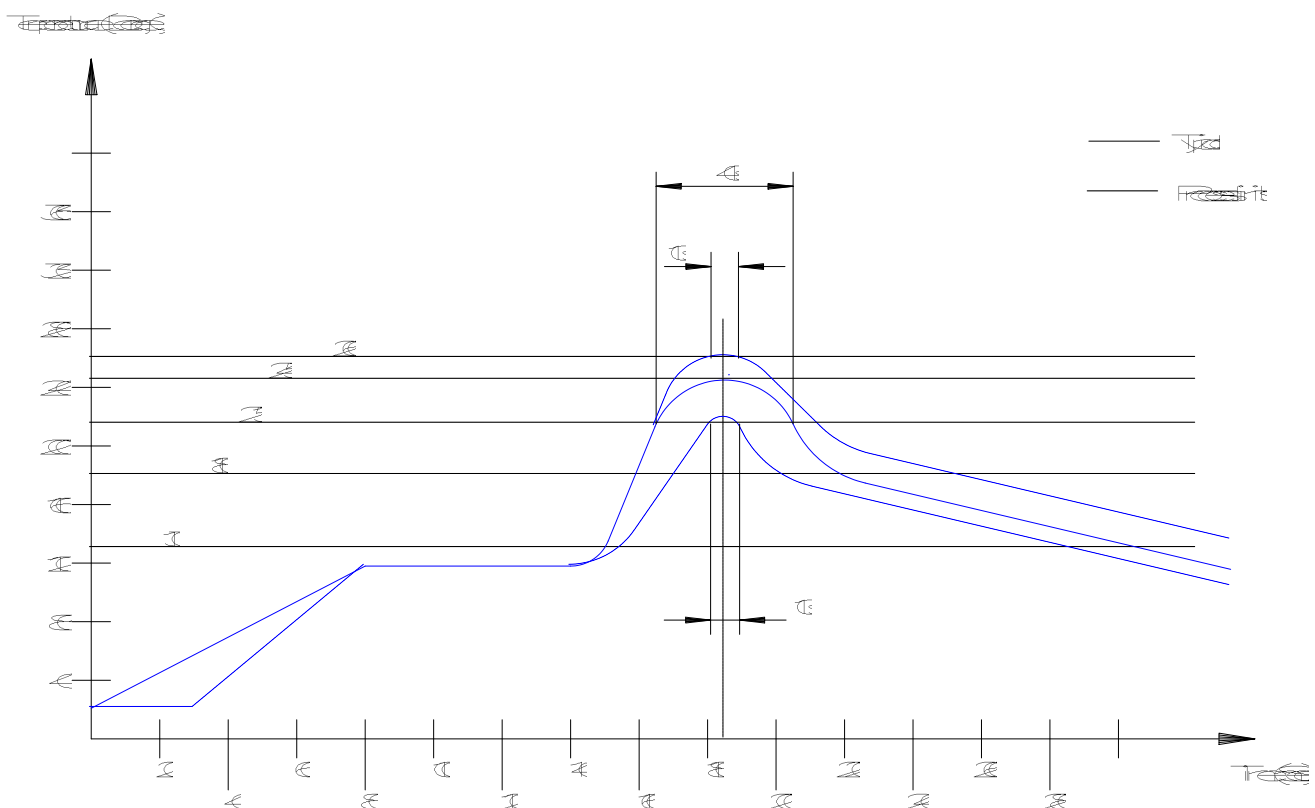
SERIES SMA-COM

PART NUMBER R124682820

## SOLDER PROCEDURE

1. Deposit solder paste 'SN62RP11AGS90' on mounting zone by screen printing application.  
We recommend a low residue flux. We advise a thickness of 150 micromm(5.850 microinch).  
Verify that the edges of the zone are clean.
2. Placement of the receptacle on the mounting zone with an automatic machine of 'pick and place' type. Video camera is preferred to check the positioning of the component. Adhesive agents are forbidden on the receptacle.
3. Soldering by infra-red reflow.
4. Cleaning of printed circuit boards.
5. Checking of solder joints and position of the component by visual inspection.

## TEMPERATURE PROFIL

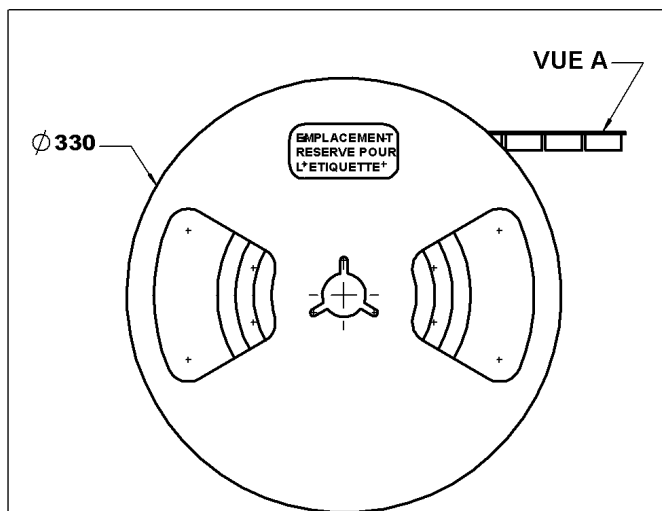


PAGE 5/5

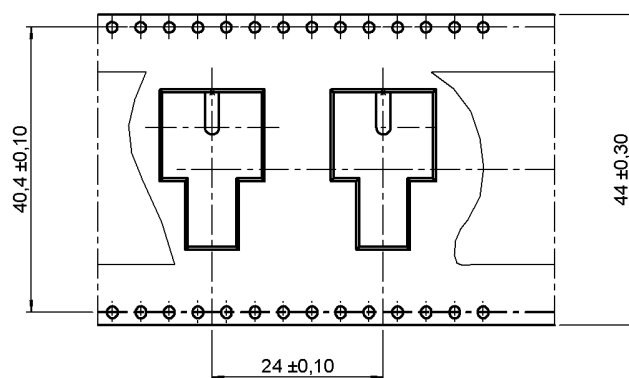
ISSUE 1435D

SERIES SMA-COM

PART NUMBER R124682820



bobine Ech :0.7



**Vue A ( ech : 1.5)  
sans connecteurs**

# Mouser Electronics

Authorized Distributor

Click to View Pricing, Inventory, Delivery & Lifecycle Information:

Radial:

[R124682820](#)