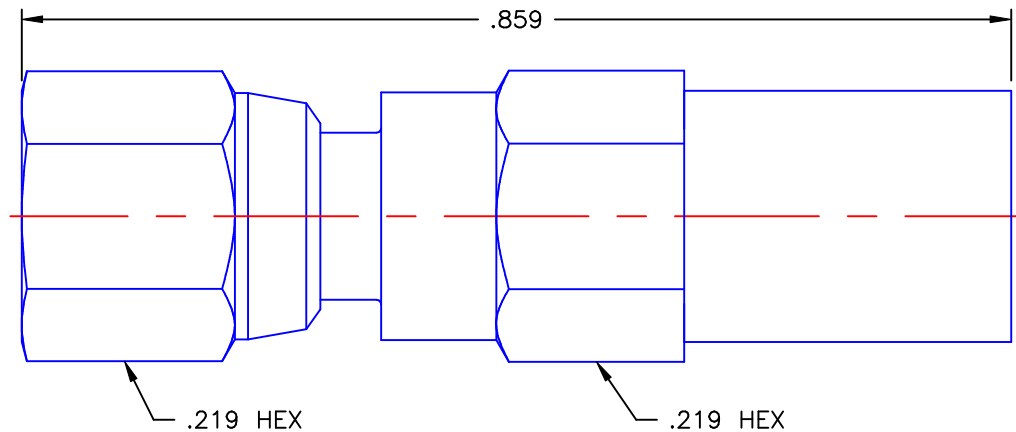


REVISIONS			
REV	DESCRIPTION	DATE	APPROVED
A	INITIAL RELEASE	02/01/11	A.D.M.





NOTES:

MATERIALS:

1. BODY, COUPLING NUT & NUT = BRASS PER ASTM B16, ALLOY C36000, TEMPER H02.
2. INSULATORS = VIRGIN WHITE TEFLON PER ASTM D1710, GRADE 1, TYPE I, CLASS "B".
3. CONTACT = BERYLLIUM COPPER PER ASTM B196, ALLOY C17300, TEMPER TD04.
4. RESISTOR = 47 OHM, 1/2 WATT, 1% TOL. PER MIL-R-10509.

FINISHES:

1. CONTACT = GOLD PLATE PER MIL-G-45204, TYPE II, CLASS 1, GRADE C, OVER .00010 TO .00020 STRESS FREE SULFAMATE NICKEL PER QQ-N-290.
2. ALL OTHER METAL PARTS = GOLD PLATE PER MIL-G-45204, TYPE II, CLASS 0, GRADE C, OVER .00010 TO .00020 COPPER STRIKE PER MIL-C-14550.

UNLESS OTHERWISE SPECIFIED DIMENSIONS ARE IN INCHES TOLERANCES ON		DWN: A.D.M.	DATE 02/01/11	 Property of Radiall This document cannot be reproduced or communicated to a third party without prior written permission of RADIALL.
		CHKD: D.N.	DATE 02/01/11	
DECIMAL	ANGLE	APVD: J.M.	DATE 02/01/11	SMC PLUG DUMMY LOAD
REFERENCE:		MATERIALS & FINISHES: SEE NOTES		
ORIGINATOR: A.D.M. DATE: 02/01/11		SIZE A	FSCM NO. 19505	DWG. NO. 1036-1511-051
		SCALE 6:1	THIRD ANGLE PROJECTION	 SHEET 1 OF 1

1036-1511-051

Mouser Electronics

Authorized Distributor

Click to View Pricing, Inventory, Delivery & Lifecycle Information:

Radial:

[1036-1511-051](#)