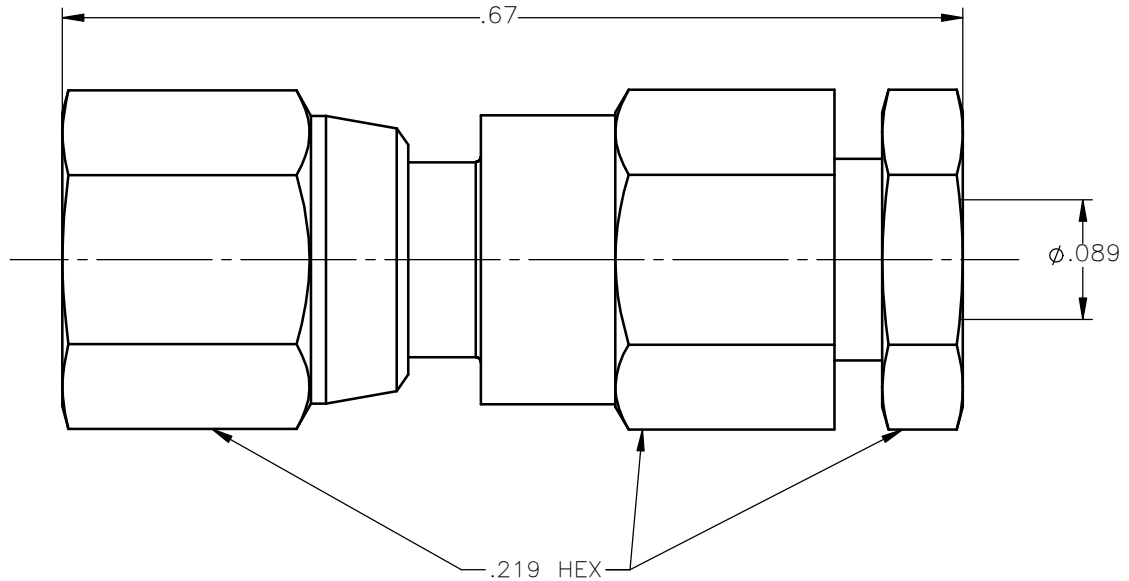


| REVISIONS | | | |
|-----------|-----------------|----------|----------|
| REV. | DESCRIPTION | DATE | APPROVED |
| A | INITIAL RELEASE | 10/31/12 | J.S. |





NOTES:

MATERIALS:

1. CONTACT = BERYLLIUM COPPER PER ASTM B196, ALLOY C17300, TEMPER TD04.
2. INSULATOR = VIRGIN WHITE TEFLON PER ASTM D1710, GRADE 1, TYPE I, CLASS "B".
3. ALL OTHER METAL PARTS = BRASS PER ASTM B16, ALLOY C36000, TEMPER H02.

FINISHES:

1. CONTACT = GOLD PLATE PER MIL-G-45204, TYPE II, CLASS 1, GRADE C, OVER .00010 TO .00020 STRESS FREE SULFAMATE NICKEL PER QQ-N-290.
2. ALL OTHER METAL PARTS = GOLD PLATE PER MIL-G-45204, TYPE II, CLASS 0, GRADE C, OVER .00010 TO .00020 COPPER STRIKE PER MIL-C-14550.

| | | | | | | | |
|-------------------------------------------------------------------------|-------|------------------------------------|---------------------------|------------------------------------------------------------------------------------------------------------------------------------------------------------------------------------------------------------------------------------------|--------------|---------------------------------------------------------------------------------------|--|
| UNLESS OTHERWISE SPECIFIED DIMENSIONS ARE IN INCHES TOLERANCES ON | | DWN: J.S. | DATE 10/31/12 |  Property of Radiall This document cannot be reproduced or communicated to a third party without prior written permission of RADIALL. | |  | |
| | | CHKD: D.N. | DATE 10/31/12 | | | | |
| DECIMAL | ANGLE | APVD: J.M. | DATE 10/31/12 | SMC STRAIGHT FEMALE PLUG CLAMP TYPE FOR RG-178 & SIMILAR CABLES | | | |
| REFERENCE: | | MATERIALS & FINISHES: SEE NOTES | | | | | |
| ORIGINATED: J.S. DATE: 10/31/12 | | SIZE A | FSCM NO. 19505 | DWG NO. 1002-1551-002 | REV A | | |
| | | SCALE 7:1 | THIRD ANGLE PROJECTION | | SHEET 1 OF 1 | | |

1002-1551-002

Mouser Electronics

Authorized Distributor

Click to View Pricing, Inventory, Delivery & Lifecycle Information:

Radial:

[1002-1551-002](#)