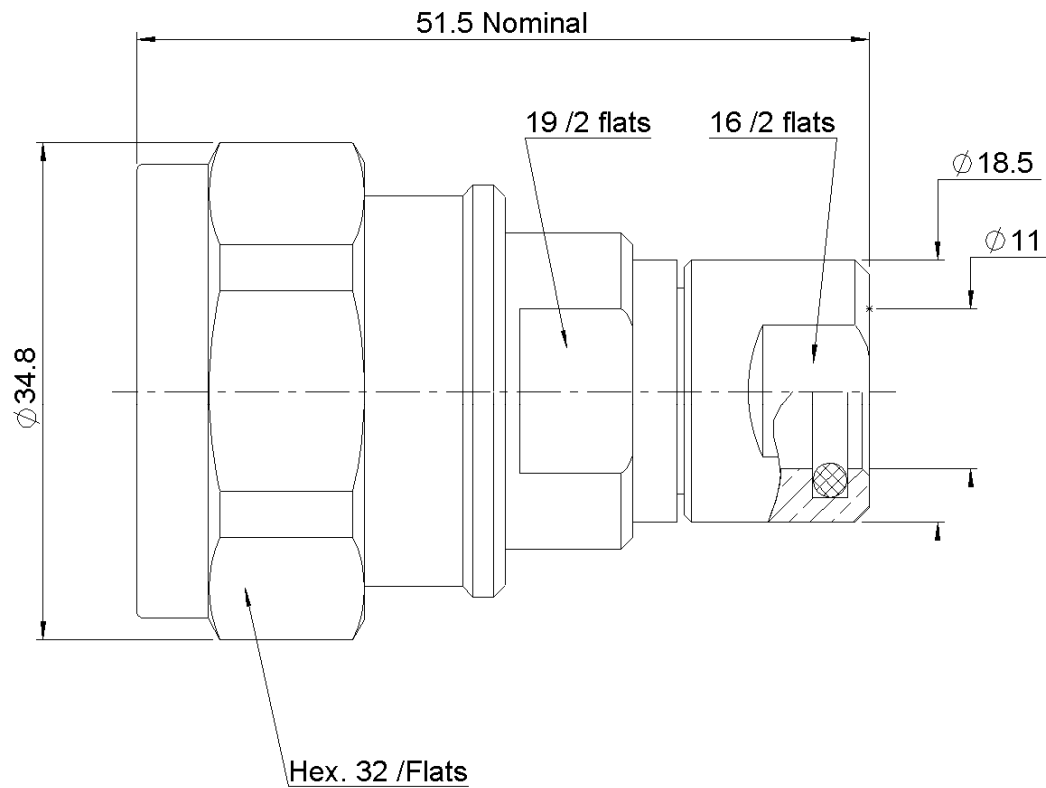


PAGE 1/3

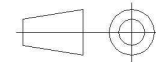
ISSUE 1334B

SERIES ECO 7/16

PART NUMBER **R185A032200**



All dimensions are in mm.



COMPONENTS	MATERIALS	PLATING (μm)
Body	<b>BRASS</b>	<b>BBR</b>
Center contact	<b>BRONZE</b>	<b>SILVER</b>
Outer contact		
Insulator	<b>PTFE</b>	
Gasket	<b>SILICONE RUBBER</b>	
Others parts	<b>BRASS</b>	<b>BBR</b>
-	-	-
-	-	-

PAGE 2/3

ISSUE 1334B

SERIES ECO 7/16

PART NUMBER R185A032200

### PACKAGING

Standard	Unit	Other
20	Contact us	Contact us

### ELECTRICAL CHARACTERISTICS

Impedance	50	Ω
Frequency	0-3	GHz
VSWR	1.1 + 0.0000	x F(GHz) Maxi
Insertion loss	0.05	√F(GHz) dB Maxi
RF leakage	- (NA)	- F(GHz) dB Maxi
Voltage rating	900	Veff Maxi
Dielectric withstanding voltage	1500	Veff mini
Insulation resistance	5000	MΩ mini

### MECHANICAL CHARACTERISTICS

Center contact retention		
Axial force – Mating End	200	N mini
Axial force – Opposite end	100	N mini
Torque	NA	N.cm mini
Recommended torque		
Mating	3500	N.cm
Panel nut	NA	N.cm
Clamp nut	950	N.cm
A/F clamp nut	16.0000	mm
Mating life	100	Cycles mini
Weight	140.8000	g

### ENVIRONMENTAL

Operating temperature	-40/+85	°C
Hermetic seal	NA	Atm.cm3/s
Panel leakage	NA	

### SPECIFICATION

### CABLE ASSEMBLY

Stripping	a	b	c	d	e	f
mm	8	24	0	0	0	0

Assembly instruction:

Recommended cable(s)

**FSJ2-50-3/8"HELIAX**

Characteristics indicated on this data sheet are those that can be achieved with the highest performance cable. Intrinsic limitations of the cable may diminish the performance of the assembly

Cable retention

- pull off	250	N mini
- torque	NA	N.cm

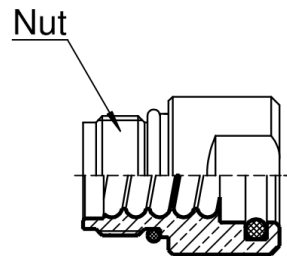
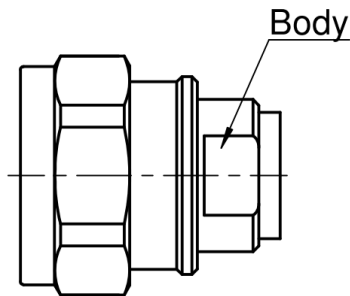
### TOOLING

Part Number	Description	Hexagon
R282010040	STRIPPING TOOL	

### OTHER CHARACTERISTICS

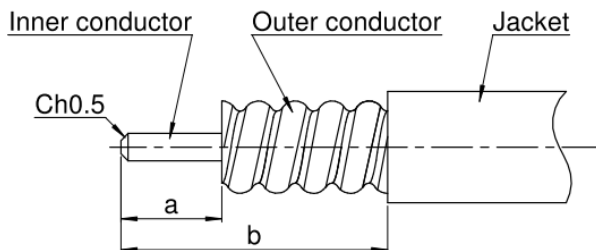
**Watertightness:IP67**

### Components



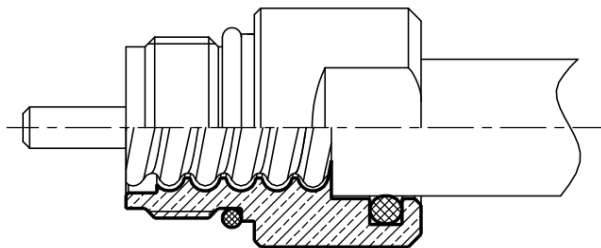
1

- Strip the cable.
- Do not damage the outer conductor.
- The end surface of inner conductor should be chamfered.
- Remove impurities such as copper scraps and burrs on the end surface of the cable.



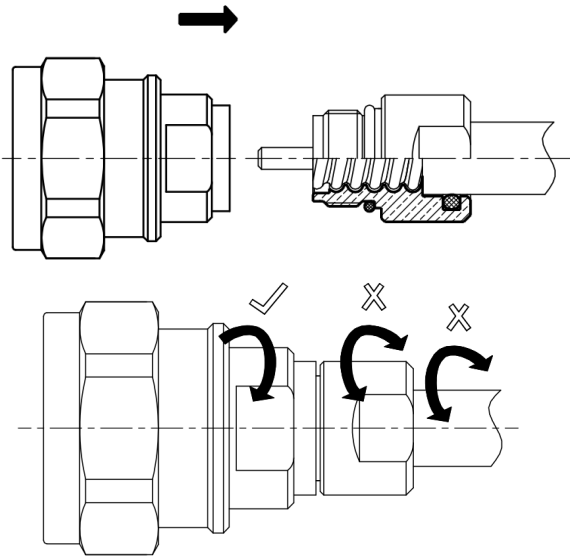
2

- Screw the cable on the back nut until it could not be moved.



3

- Screw connector body onto the nut tightly.
- Screw the body, keeping the nut and cable fixing while tightening.
- Recommended coupling torque: 950 N.cm



# Mouser Electronics

Authorized Distributor

Click to View Pricing, Inventory, Delivery & Lifecycle Information:

Radial:

[R185A032200](#)