

Page  
1 / 2

OPTIONS: INDICATOR /SELF CUT-OFF

FREQUENCY RANGE : 0 - 12.4 GHz  
IMPEDANCE : 50 Ohms

FREQUENCY (GHz)	0 - 1	1 - 2	2 - 3	3 - 8	8 - 12.4
V.S.W.R. <=	1.15	1.20	1.25	1.35	1.50
INSERT. LOSS <=	0.15 dB	0.20 dB	0.25 dB	0.35 dB	0.50 dB
ISOLATION >=	85 dB	80 dB	75 dB	70 dB	60 dB
AVER. POWER (*)	700 W	500 W	400 W	250 W	200 W

ACTUATOR	: LATCHING
NOMINAL CURRENT AT 25°C (±10%)	: 125 mA
ACTUATOR VOLTAGE (Vcc)	: 28V (24 to 30V) /NEGATIVE COMMON
TERMINALS	: D-sub 9 pins
INDICATOR RATING	: 1 W / 30 V / 100 mA
SELF CUT-OFF TIME	: 40 ms < CT < 120 ms

CONNECTORS	: N female	per MIL C 39012
LIFE	: 2.500.000	cycles
SWITCHING TIME (nominal voltage;25° C)	: < 15	ms
CONSTRUCTION	: splashproof	
WEIGHT	: < 215	g

OPERATING TEMPERATURE RANGE (°C) : -40 , +85  
STORAGE TEMPERATURE RANGE (°C) : -55 , +85

(\* : average power at 25° C)

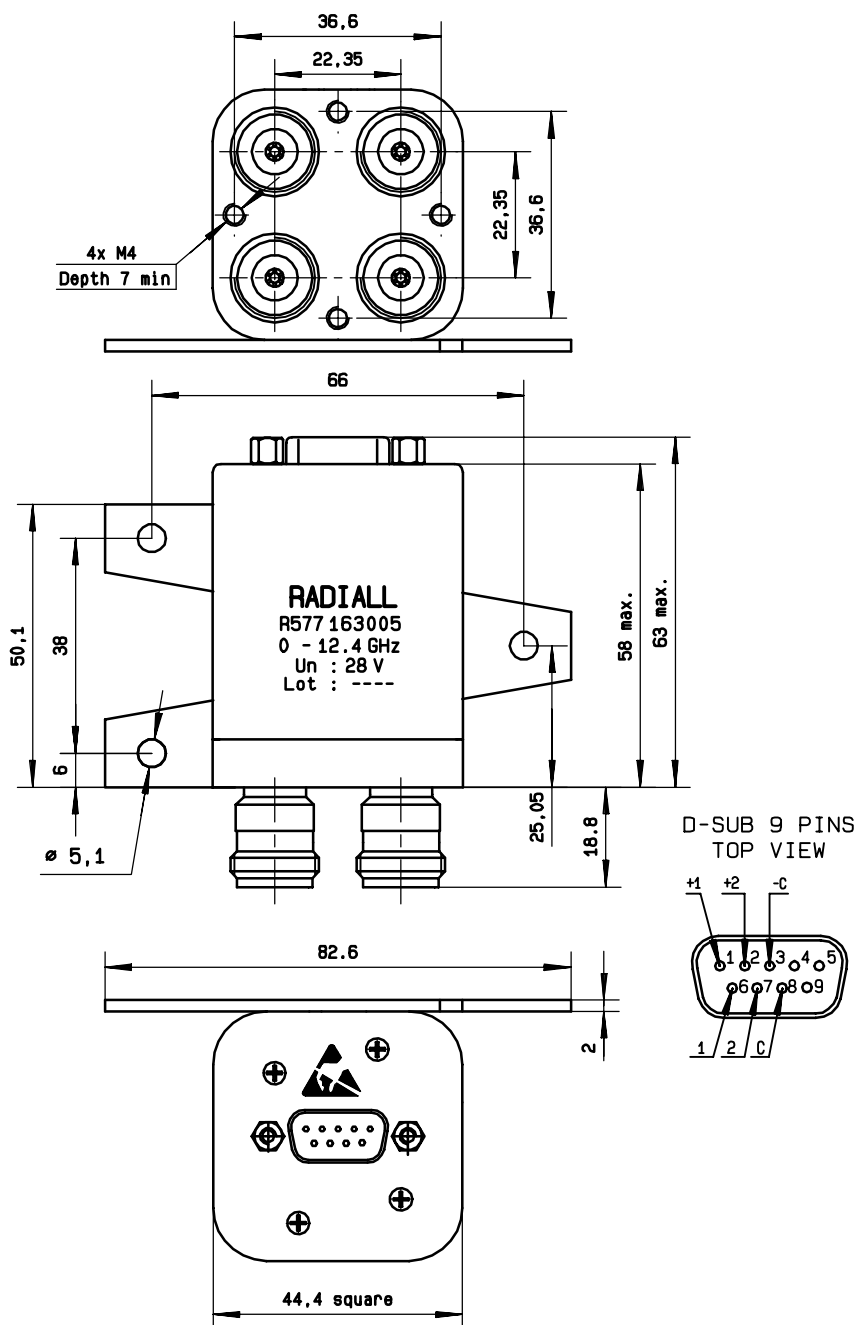
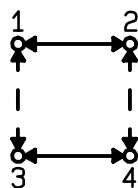
This information is given as an indication. In the continual goal to improve our products, we reserve the right to make any modifications judged necessary

General tolerance:  $\pm 0,5$  mm

# R577.163.005

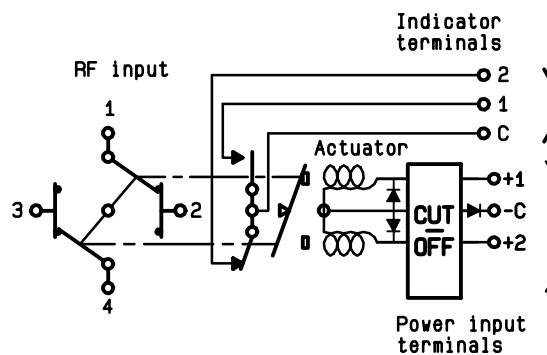
Page  
2/2

## DRAWING



## SCHEMATIC DIAGRAM

Voltage	RF continuity	Indicator
- C + 1	1↔3 2↔4	C . 1
- C + 2	1↔2 3↔4	C . 2



ISSUE 22. jan.08

4113-9212

# Mouser Electronics

Authorized Distributor

Click to View Pricing, Inventory, Delivery & Lifecycle Information:

Radial:

[R577163005](#)