

Page
1 / 2

OPTIONS: INDICATOR / TTL DRIVE

```

FREQUENCY RANGE      : 0 - 3 GHz
IMPEDANCE            : 50 Ohms

```

FREQUENCY (GHz)	0 - 1	1 - 2	2 - 3
V.S.W.R. <=	1.15	1.20	1.25
INSERT. LOSS <=	0.15 dB	0.20 dB	0.25 dB
ISOLATION >=	85 dB	80 dB	75 dB
AVER. POWER (*)	700 W	500 W	400 W

ACTUATOR	: FAILSAFE
NOMINAL CURRENT AT 25° C (±10%)	: 340 mA
ACTUATOR VOLTAGE (Vcc)	: 12V (10.2 to 13V)
TERMINALS	: solder pins (250 Deg.C max./30 sec)
INDICATOR RATING	: 1 W / 30 V / 100 mA
TTL INPUTS (E) - High level	: 2.2 to 5.5V / 800µA at 5V
- Low level	: 0 to 0.8V / 20µA at 0.8V

CONNECTORS	: N female	per MIL C 39012
LIFE	: 2.500.000	cycles
SWITCHING TIME (nominal voltage;25° C)	: < 15	ms
CONSTRUCTION	: splashproof	
WEIGHT	: < 215	g

OPERATING TEMPERATURE RANGE (°C) : -40 , +85
STORAGE TEMPERATURE RANGE (°C) : -55 , +85

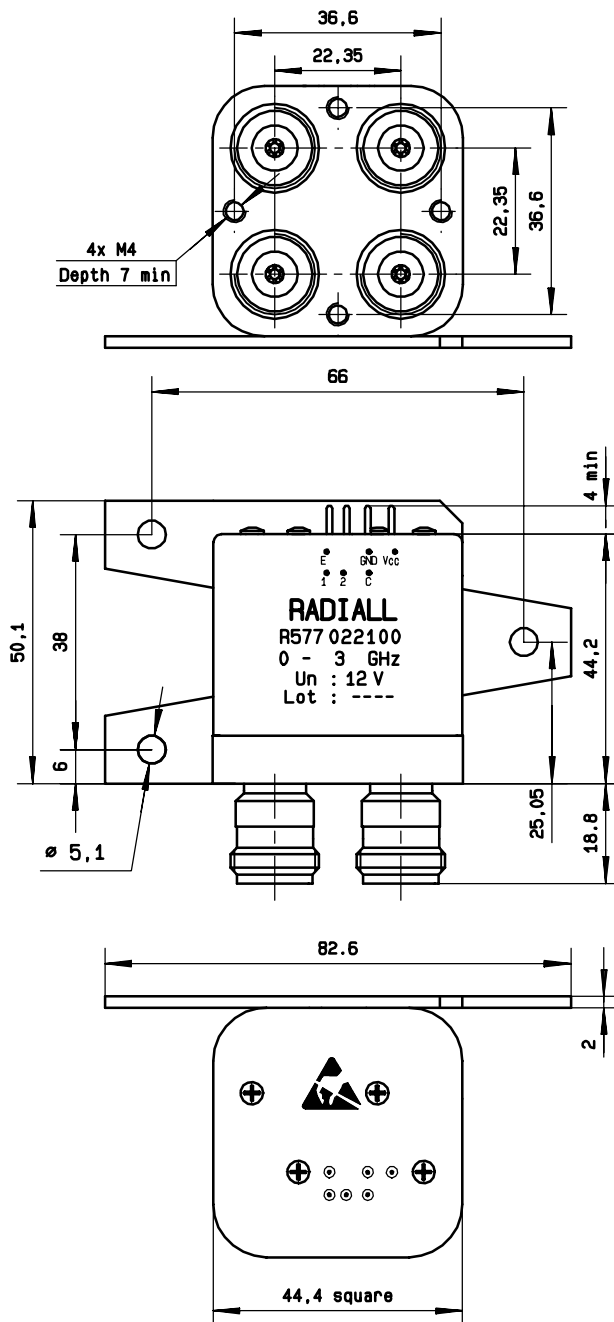
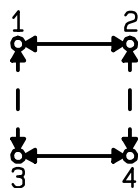
(* : average power at 25° C)

General tolerance: $\pm 0,5$ mm

R577.022.100

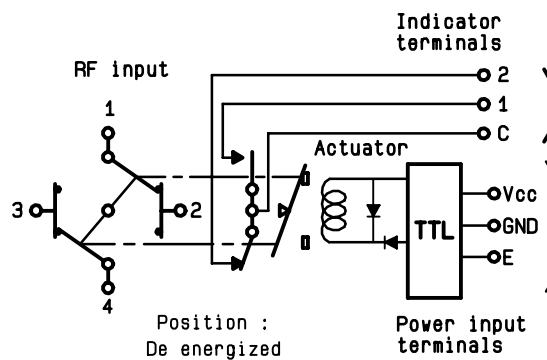
Page
2/2

DRAWING



SCHEMATIC DIAGRAM

TTL input	RF continuity	Indicator
E=1	1↔3 2↔4	C . 1
E=0	1↔2 3↔4	C . 2



ISSUE 22. jan.08

Mouser Electronics

Authorized Distributor

Click to View Pricing, Inventory, Delivery & Lifecycle Information:

Radial:

[R577022100](#)