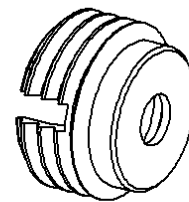
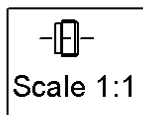
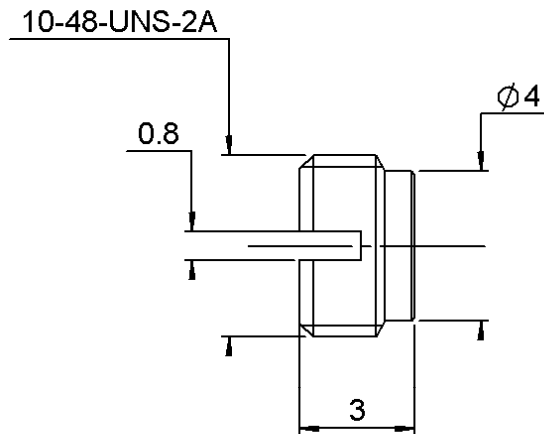


**THREAD-IN SHROUD 0.4MM**

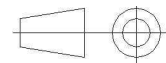
**FULL DETENT**

**R222.550.001**

Series : SMP



All dimensions are in mm.



COMPONENTS	MATERIALS	PLATINGS (µm)
<b>BODY</b>	<b>STAINLESS STEEL</b>	<b>PASSIVATED.</b>
<b>CENTER CONTACT</b>	-	-
<b>OUTER CONTACT</b>	-	-
<b>INSULATOR</b>	-	-
<b>GASKET</b>	-	-
<b>OTHERS PARTS</b>	-	-
-	-	-
-	-	-

**Issue : 1243 B**

In the effort to improve our products, we reserve the right to make changes judged to be necessary.



**THREAD-IN SHROUD 0.4MM****R222.550.001****FULL DETENT**Series : **SMP****PACKAGING**

Standard	Unit	Other
<b>100</b>	<b>'W' option</b>	<b>Contact us</b>

**SPECIFICATION****ELECTRICAL CHARACTERISTICS**

Impedance	<b>50</b>	$\Omega$
Frequency	<b>NA</b>	GHz
VSWR	<b>NA + 0,0000</b>	x F(GHz) Maxi
Insertion loss	<b>NA</b>	$\sqrt{F}(\text{GHz})$ dB Maxi
RF leakage	<b>NA - (</b>	<b>NA</b> - F(GHz)) dB Maxi
Voltage rating	<b>NA</b>	Veff Maxi
Dielectric withstanding voltage	<b>NA</b>	Veff mini
Insulation resistance	<b>NA</b>	M $\Omega$ mini

**ENVIRONMENTAL**

Operating temperature	<b>-65/+165</b>	$^{\circ}\text{C}$
Hermetic seal	<b>NA</b>	Atm.cm3/s
Panel leakage	<b>NA</b>	

**OTHERS CHARACTERISTICS**Assembly instruction **NA**Others :  
-**MECHANICAL CHARACTERISTICS**

Center contact retention	
Axial force – Mating end	<b>NA</b> N mini
Axial force – Opposite end	<b>NA</b> N mini
Torque	<b>NA</b> N.cm mini
Recommended torque	
Mating	<b>NA</b> N.cm
Panel nut	<b>90</b> N.cm
Mating life	<b>100</b> Cycles mini
Weight	<b>0,1500</b> g

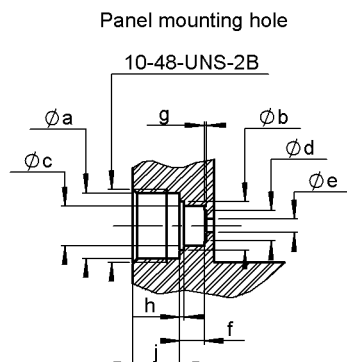
**Issue : 1243 B**

In the effort to improve our products, we reserve the right to make changes judged to be necessary.

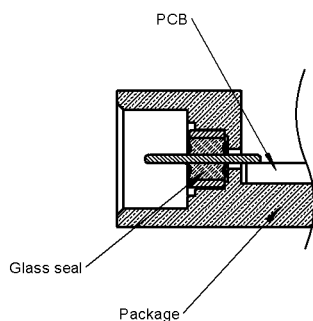


**THREAD-IN SHROUD 0.4MM****FULL DETENT****R222.550.001**

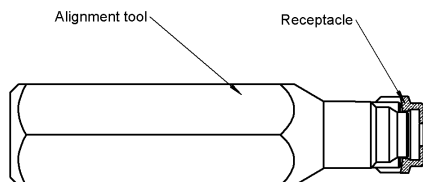
Series : SMP

**ADDITIONAL INFORMATION  
MOUNTING AND REPLACEMENT INSTRUCTIONS**

	mini - maxi
a	4,32 - 4,37
b	3,21 - 3,25
c	2,56 - 2,58
d	1,95 - 2,05
e	0,86 - 0,89
f	1,61 - 1,65
g	0,13 - 0,18
h	0,28 - 0,35
i	3,10 - 3,15



1. Solder the glass seal on the panel.
2. Connector must be screwed or unscrewed with adapted torque driver R282.339.001 (recommended coupling torque 90 Ncm)  
Alignment tool R282.360.001
3. Slide on the receptacle until it bottoms against tooling



1. Screw the receptacle into the package housing until activation of the torque driver
2. Withdraw the alignment tool

**Issue : 1243 B**

In the effort to improve our products, we reserve the right to make changes judged to be necessary.



# Mouser Electronics

Authorized Distributor

Click to View Pricing, Inventory, Delivery & Lifecycle Information:

Radial:

[R222550001](#)