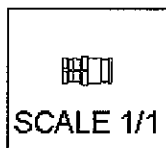
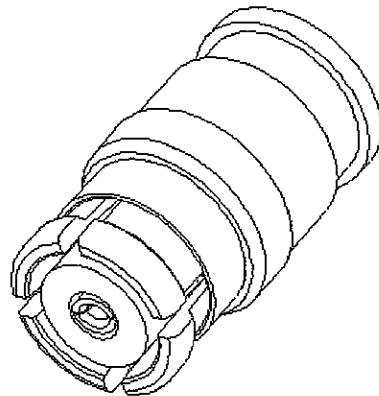
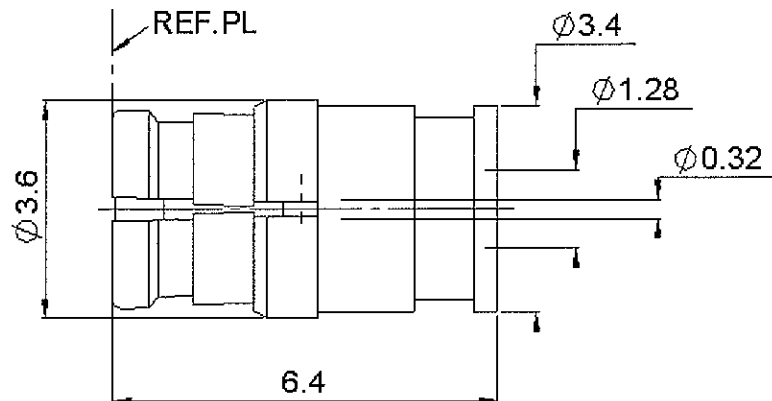


FEMALE STRAIGHT PLUG SOLDER TYPE

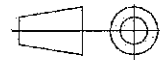
R222.051.000

CABLE .047

Series : SMP



All dimensions are in mm.



| COMPONENTS | MATERIALS | PLATINGS (μm) |
|----------------|------------------|----------------------------|
| BODY | BERYLLIUM COPPER | GOLD 1.3 OVER NICKEL 2 |
| CENTER CONTACT | BERYLLIUM COPPER | GOLD 1.27 OVER NICKEL 1.27 |
| OUTER CONTACT | - | - |
| INSULATOR | PTFE | - |
| GASKET | - | - |
| OTHERS PARTS | BERYLLIUM COPPER | GOLD 1.3 OVER NICKEL 2 |
| - | - | - |
| - | - | - |

Issue : 0606 C

In the effort to improve our products, we reserve the right to make changes judged to be necessary.



FEMALE STRAIGHT PLUG SOLDER TYPE**R222.051.000****CABLE .047**Series : **SMP****PACKAGING**

| Standard | Unit | Other |
|----------|------------|------------|
| 100 | 'W' option | Contact us |

ELECTRICAL CHARACTERISTICS

| | | |
|---------------------------------|----------|-------------------------|
| Impedance | 50 | Ω |
| Frequency | 0-40 | GHz |
| VSWR | 1.35 + 0 | x F(GHz) Maxi |
| Insertion loss | 0.12 | $\sqrt{F(GHz)}$ dB Maxi |
| RF leakage | - (| - F(GHz)) dB mini |
| Voltage rating | 335 | Veff Maxi |
| Dielectric withstanding voltage | 500 | Veff mini |
| Insulation resistance | 5000 | M Ω mini |

MECHANICAL CHARACTERISTICS

| | | |
|----------------------------|------|-------------|
| Center contact retention | | |
| Axial force – Mating end | NA | N mini |
| Axial force – Opposite end | NA | N mini |
| Torque | NA | N.cm mini |
| Recommended torque | | |
| Mating | NA | N.cm |
| Panel nut | NA | N.cm |
| Clamp nut | NA | N.cm |
| A/F clamp nut | 0 | mm |
| Mating life | 100 | Cycles mini |
| Weight | 0.29 | g |

ENVIRONMENTAL

| | | |
|-----------------------|----------|-----------|
| Operating temperature | -65/+165 | ° C |
| Hermetic seal | NA | Atm.cm3/s |
| Panel leakage | NA | |

SPECIFICATION**CABLE ASSEMBLY**

| Stripping | a | b | c | d | e | f |
|-----------|-----|---|---|---|---|---|
| mm | 1.3 | 0 | 0 | 0 | 0 | 0 |

Assembly instruction :

Recommended cable(s)
UT47 M17/151-00001

Cable retention

| | | |
|------------|----|--------|
| - pull off | 45 | N mini |
| - torque | NA | N.cm |

TOOLING

| Part Number | Description | Hexagon |
|--------------|------------------------------|---------|
| . | . | . |
| R282.740.030 | SOLDERING MOUNTING | |
| R282.743.120 | POSITIONER FOR SOLDERING SMP | |
| R282.744.253 | POSITIONER FOR SOLDERING SMP | |
| R282.862.050 | SOLDER GAUGE THCK .012 | |

OTHERS CHARACTERISTICSRF leakage : -80dB DC-3GHz
-65dB 3-26.5GHz
Compliant with MIL-STD-348

Issue : 0606 C

In the effort to improve our products, we reserve the right to make changes judged to be necessary.

**RADIALL®**

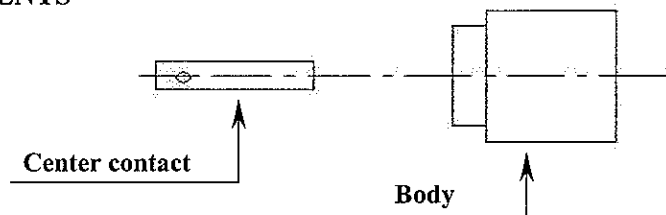
FEMALE STRAIGHT PLUG SOLDER TYPE

R222.051.000

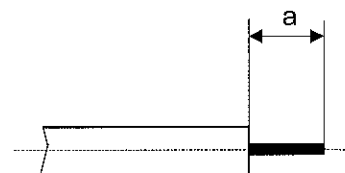
CABLE .047

Series : SMP

COMPONENTS



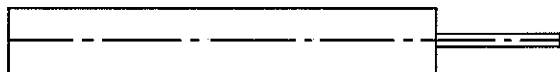
STRIPPING DIMENSIONS



We recommend a thermal preconditioning cable

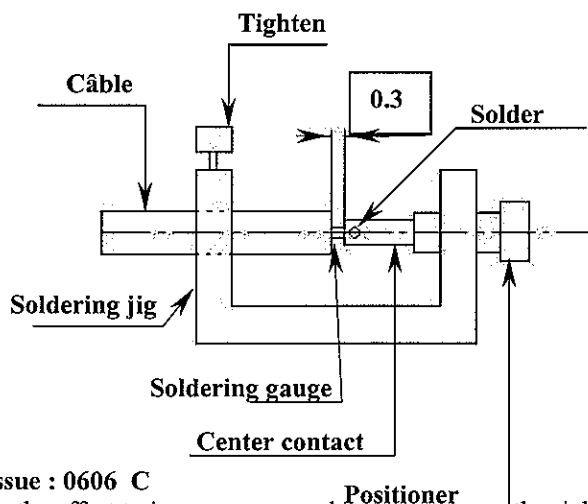
1

Strip the dielectric of the cable .
Trim the cable cone.
Clean the cable .
The iron temperature shall not exceed 250°C



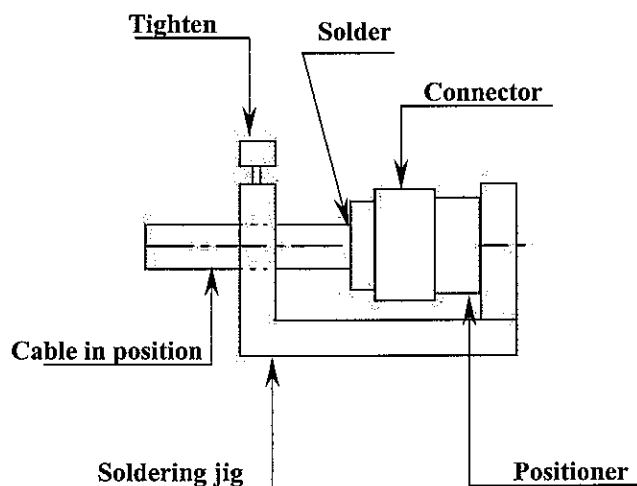
2

Screw the positioner onto the soldering jig.
Slide the center contact into positioner.
Insert the solder gauge between contact and the cable .
Tighten and solder the center contact.



3

After cooling remove cable assembly from the jig.
Slide body into the positioner .
Slide cable into the connector until it bottoms against the positioner .
Tighten.
Solder the body onto the cable.
After cooling remove cable assembly from the jig.



Issue : 0606 C

In the effort to improve our products, we reserve the right to make changes judged to be necessary.

**RADIALL®**

Mouser Electronics

Authorized Distributor

Click to View Pricing, Inventory, Delivery & Lifecycle Information:

Radial:

[R222051000](#)