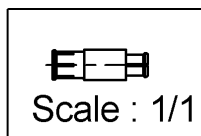
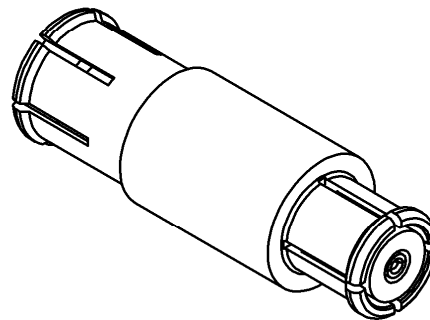
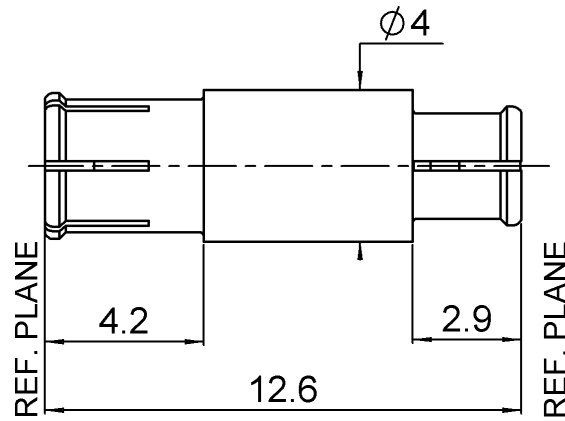


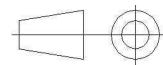
SMP-MAX FEMALE SLIDE TYPE - SMP FEMALE
STRAIGHT ADAPTER

R191.996.110

Série : ADAPTER



All dimensions are in mm.



COMPONENTS	MATERIALS	PLATING (µm)
BODY	BERYLLIUM COPPER	NPGR
CENTER CONTACT	BERYLLIUM COPPER	NPGR
OUTER CONTACT		
INSULATOR	PTFE	
GASKET		
OTHERS PARTS		
-	-	-
-	-	-

Issue : 1107 A

In the effort to improve our products, we reserve the rights to make changes judged to be necessary.

RADIAL 

SMP-MAX FEMALE SLIDE TYPE - SMP FEMALE**R191.996.110****STRAIGHT ADAPTER**Série : **ADAPTER****PACKAGING**

Standard	Unit	Other
100	'W' option	Contact us

SPECIFICATION**ELECTRICAL CHARACTERISTICS**

Impedance	50	Ω
Frequency	0-6	GHz
VSWR	1.25* + 0,0000	x F(GHz) Maxi
Insertion loss	0.15*	$\sqrt{F}(\text{GHz})$ dB Maxi
RF leakage	- (NA)	- F(GHz)) dB Maxi
Voltage rating	335	Veff Maxi
Dielectric withstanding voltage	500	Veff mini
Insulation resistance	5000	M Ω mini

ENVIRONMENTAL

Operating	-55/+125	$^{\circ}\text{C}$
Hermetic seal	NA	Atm.cm3/s
Panel leakage	NA	

MECHANICAL CHARACTERISTICS

Center contact retention	
Axial force – Mating end	7 N mini
Axial force – Opposite end	7 N mini
Torque	NA N.cm mini

Recommended torque	
Mating	SMP-MAX 0 N.cm
	SMP-COM 0 N.cm
	0 N.cm
Panel nut	NA N.cm

Mating life	100 Cycles mini
Weight	0,6230 g

OTHER CHARACTERISTICS

*VSWR: up to 3GHz; 3-6GHz,1.35max
 *Coaxial Transmission Line Only
 *Slide type receptacle+Bullet+Snap type receptacle
 Typical VSWR(Board to Board connection):
 0-3GHz, 1.2max
 Power handling (typical) : >120W@3GHz at 25°C
 Radial working angle: 3°min
 Axial working range : 2mm

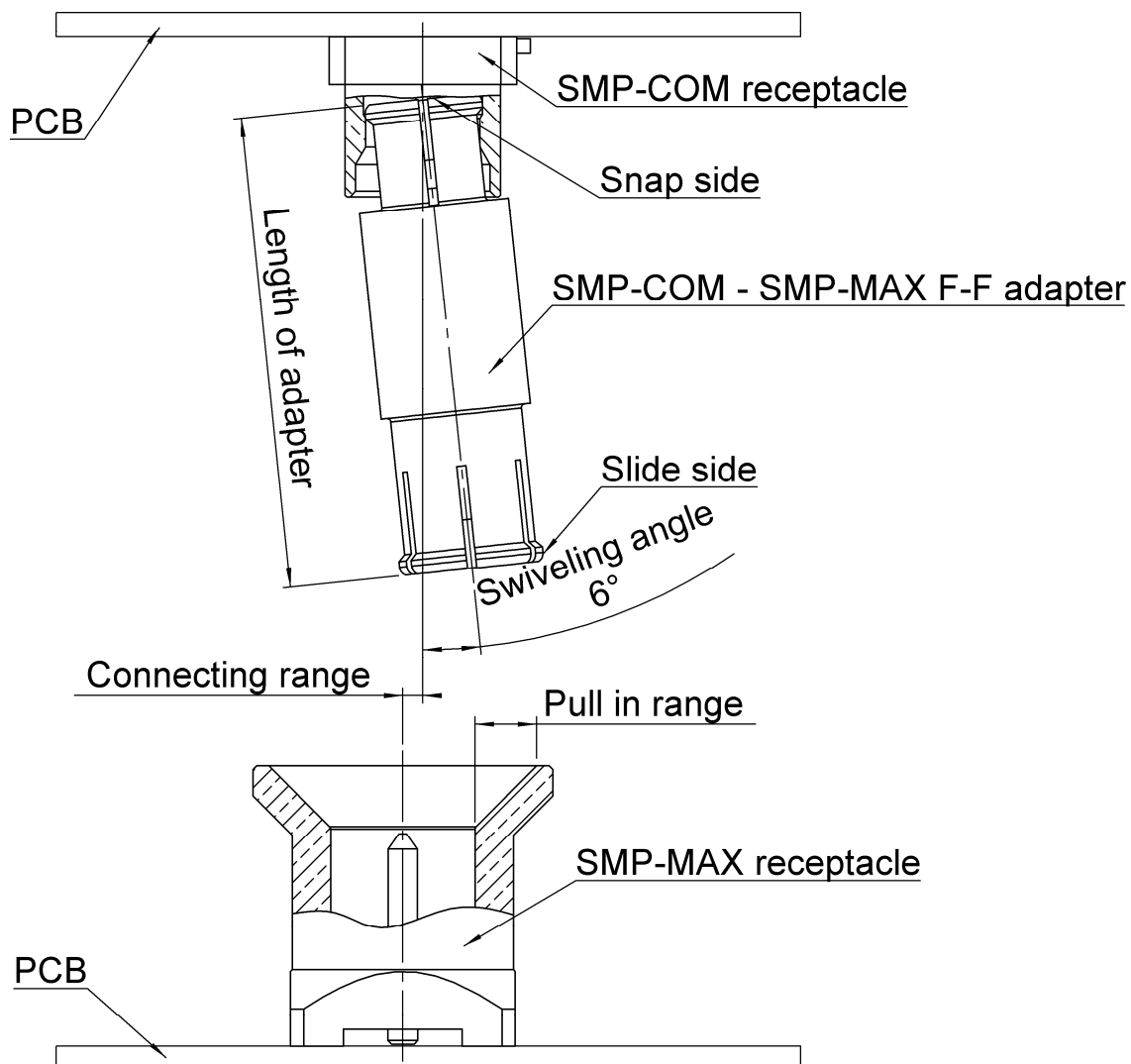
Issue : **1107** **A**

In the effort to improve our products, we reserve the rights to make changes judged to be necessary.

RADIAL 

SMP-MAX FEMALE SLIDE TYPE - SMP FEMALE**STRAIGHT ADAPTER****R191.996.110**Série : **ADAPTER**

SMP-MAX connecting range



The connecting range represents the maximum misalignment during connection.

The swiveling angle is the maximum possible angle of the adapter in a snap receptacle.

A blind assembly is guaranteed if radial misalignment is smaller than connecting range. Otherwise a manual lead-in is necessary.

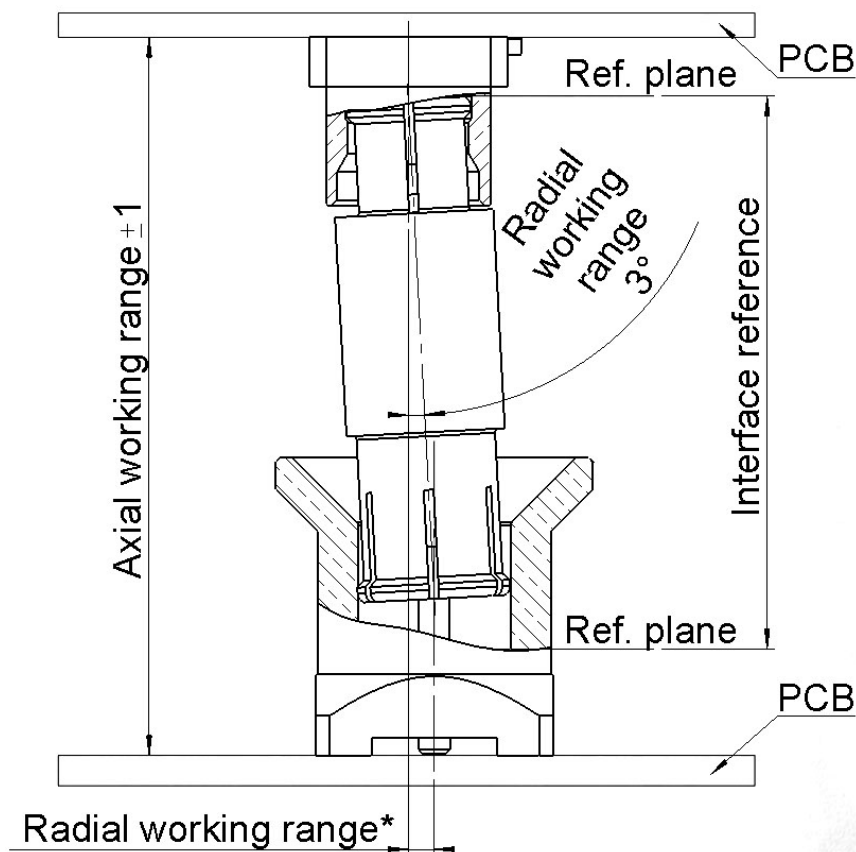
SMP-MAX FEMALE SLIDE TYPE - SMP FEMALE

STRAIGHT ADAPTER

R191.996.110

Série : ADAPTER

SMP-MAX radial and axial working range



Electrical performance is achieved when radial and axial misalignments are within their working ranges.

* Radial working range = (length of the adapter)* Sin(radial working angle).

Mouser Electronics

Authorized Distributor

Click to View Pricing, Inventory, Delivery & Lifecycle Information:

Radial:

[R191996110](#)