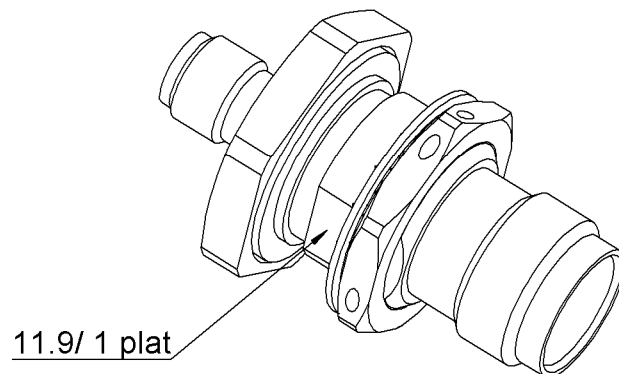
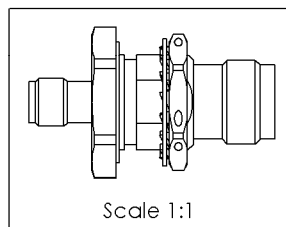
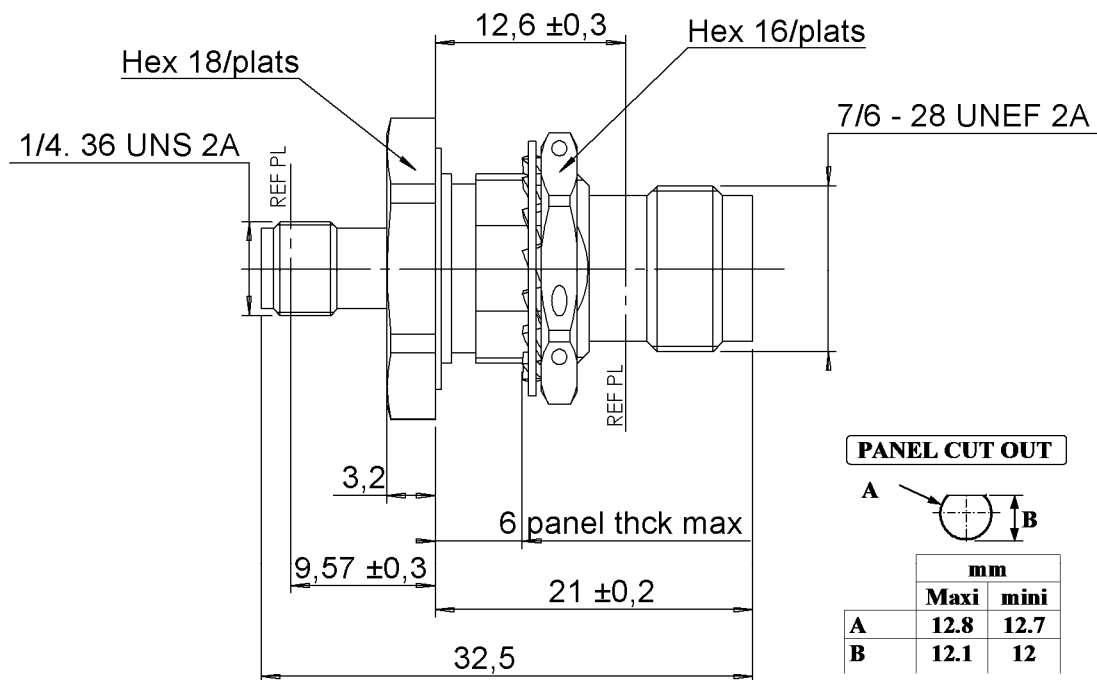
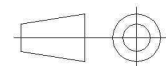


PAGE 1/2	ISSUE 1448C	SERIES ADAPT	PART NUMBER R191314700
----------	-------------	--------------	------------------------



All dimensions are in mm.



COMPONENTS	MATERIALS	PLATING (µm)
Body	STAINLESS STEEL	PASSIVATED
Center contact	BERYLLIUM COPPER	GOLD 2.5 OVER NICKEL 2
Outer contact	-	-
Insulator	PTFE	-
Gasket	BLACK FLUOROCARBON + NITRILE	PASSIVATED
Others parts	STAINLESS STEEL	-
-	-	-
-	-	-

PAGE <b>2/2</b>	ISSUE <b>1448C</b>	SERIES <b>ADAPT</b>	PART NUMBER <b>R191314700</b>
-----------------	--------------------	---------------------	-------------------------------

### PACKAGING

Standard	Unit	Other
<b>1</b>	<b>Contact us</b>	<b>Contact us</b>

### ELECTRICAL CHARACTERISTICS

Impedance		<b>50</b>	$\Omega$
Frequency		<b>0-12.4</b>	GHz
VSWR	<b>1.25</b>	<b>+</b>	<b>0,0350</b> x F(GHz) Maxi
Insertion loss		<b>0.35</b>	$\sqrt{F}$ (GHz) dB Maxi
RF leakage	<b>- (</b>	<b>60</b>	- F(GHz)) dB Maxi
Voltage rating		<b>500</b>	Veff Maxi
Dielectric withstanding voltage		<b>1000</b>	Veff mini
Insulation resistance		<b>5000</b>	M $\Omega$ mini

### MECHANICAL CHARACTERISTICS

Center contact retention			
Axial force – Mating End		<b>27</b>	N mini
Axial force – Opposite end		<b>27</b>	N mini
Torque		<b>NA</b>	N.cm mini

Recommended torque			
Mating	<b>SMA</b>	<b>0</b>	N.cm
	<b>TNC</b>	<b>0</b>	N.cm
	<b>-</b>	<b>0</b>	N.cm
Panel nut		<b>320</b>	N.cm

Mating life	<b>500</b>	Cycles mini
Weight	<b>12,0000</b>	g

### ENVIRONMENTAL

Operating	<b>-65/+125</b>	$^{\circ}\text{C}$
Hermetic seal	<b>NA</b>	Atm.cm3/s
Panel leakage		

### SPECIFICATION

### OTHER CHARACTERISTICS

**Internal and external seal: IP66**

# Mouser Electronics

Authorized Distributor

Click to View Pricing, Inventory, Delivery & Lifecycle Information:

Radial:

[R191314700](#)