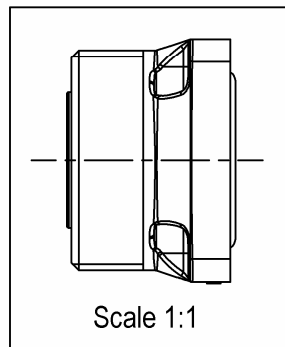
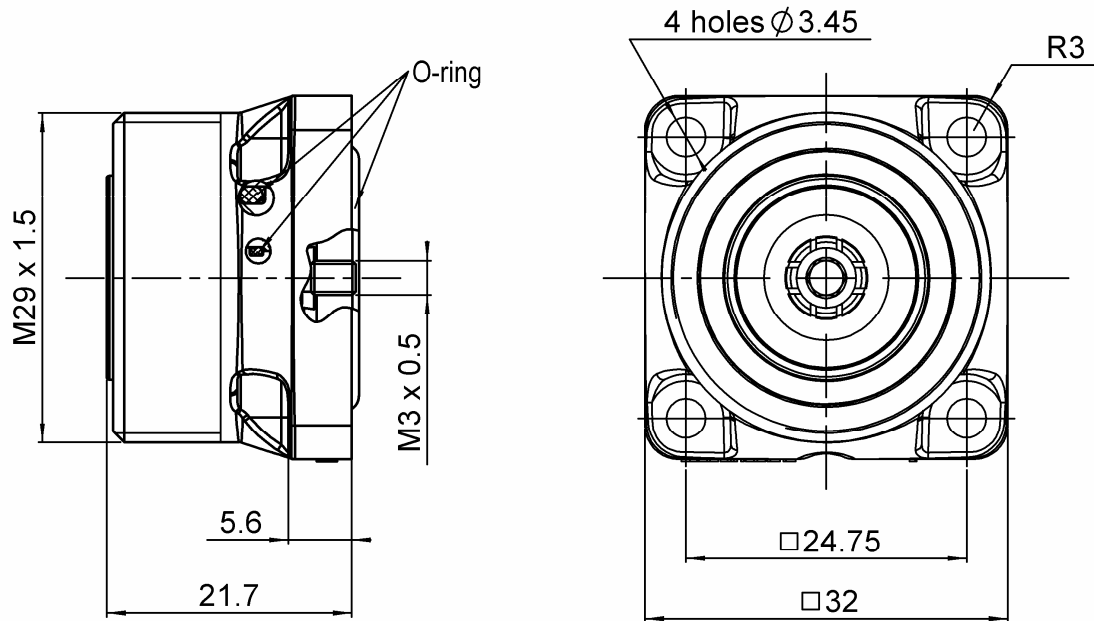


**COMPOSITE SQUARE FLANGE JACK RECEPTACLE-
PANEL SEAL**

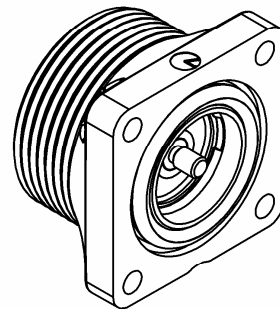
R187.403.100

Series : 7/16
COMPOSITE

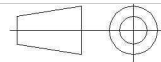
WATERPROOF INTERFACE-FRONT MOUNT M3 SCREW



PANEL CUT OUT		
A DIA		
B DIA		
4 holes		
	mm	
	Maxi	mini
A	16.2	16
B	3.7	3.6
C	24.8	24.7



All dimensions are in mm.



COMPONENTS	MATERIALS	PLATING (μm)
BODY	COMPOSITE MATERIAL - BLACK	-
CENTER CONTACT	BRONZE	SILVER 5 OVER COPPER 0.5
OUTER CONTACT	BRASS	SILVER 3 OVER BBR 0.5
INSULATOR	PTFE	-
GASKET	SILICONE RUBBER	-
OTHERS PARTS	-	-
-	-	-
-	-	-

Issue : 0935 C

In the effort to improve our products, we reserve the right to make changes judged to be necessary.

RADIAL

**COMPOSITE SQUARE FLANGE JACK RECEPTACLE-
PANEL SEAL****R187.403.100**Series : 7/16
COMPOSITE**WATERPROOF INTERFACE-FRONT MOUNT M3 SCREW****PACKAGING**

Standard	Unit	Other
60	'W' option	Contact us

SPECIFICATION**ELECTRICAL CHARACTERISTICS**

Impedance	50	Ω
Frequency	0-7.5	GHz
VSWR	*1.06 + 0.0000	x F(GHz) Maxi
Insertion loss	0.05	$\sqrt{F}(\text{GHz})$ dB Maxi
RF leakage	- (NA	- F(GHz)) dB Maxi
Voltage rating	1400	Veff Maxi
Dielectric withstanding voltage	2700	Veff mini
Insulation resistance	10000	M Ω mini

ENVIRONMENTAL

Operating temperature	-40/+85	$^{\circ}\text{C}$
Hermetic seal	NA	Atm.cm3/s
Panel leakage	IP67	

OTHER CHARACTERISTICS

Assembly instruction

Others :

*vswr : 1.06 between DC to 3 GHz

*vswr : 1.10 between 3 to 7.5 GHz

PIM3:-125 dBm under 2 carriers of +43dBm

MECHANICAL CHARACTERISTICS

Center contact retention	
Axial force – Mating end	200 N mini
Axial force – Opposite end	NA N mini
Torque	NA N.cm mini

Recommended torque	
Mating	NA N.cm
Panel nut	NA N.cm

Mating life	500 Cycles mini
Weight	14.5600 g

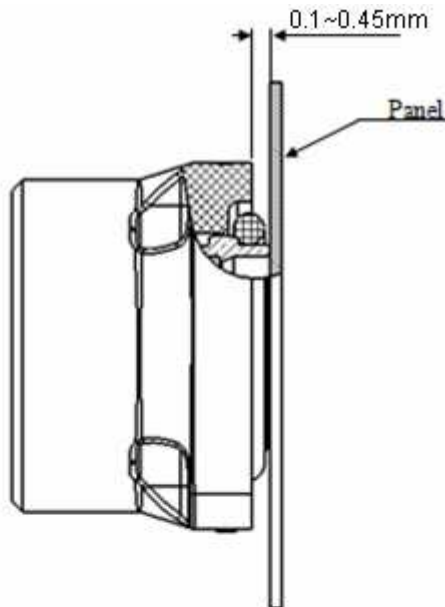
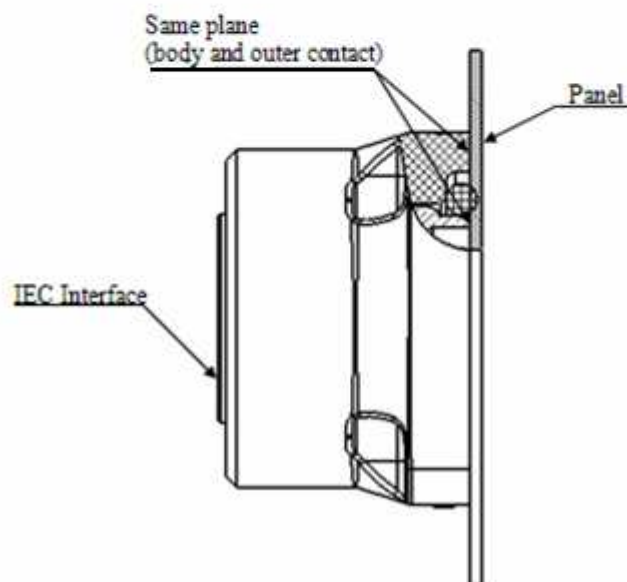
Issue : 0935 C

In the effort to improve our products, we reserve the right to make changes judged to be necessary.

RADIAL 

**COMPOSITE SQUARE FLANGE JACK RECEPTACLE-
PANEL SEAL****R187.403.100**Series : 7/16
COMPOSITE**WATERPROOF INTERFACE-FRONT MOUNT M3 SCREW****Assembly instruction**

Prior to the installation, the outer contact is slightly protruded from the rear flange (0.1~0.45mm). During the installation, the outer contact is pushed inside the composite housing. In its final position, the outer contact is aligned with the rear flange, and in contact with the panel. During mating, the outer contact is pressed against the panel, reducing significantly the IM3 generation.

**Before assembly****After assembly****Issue : 0935 C**

In the effort to improve our products, we reserve the right to make changes judged to be necessary.

RADIAL 

Mouser Electronics

Authorized Distributor

Click to View Pricing, Inventory, Delivery & Lifecycle Information:

Radial:

[R187403100](#)