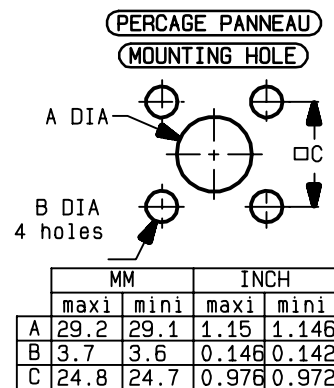
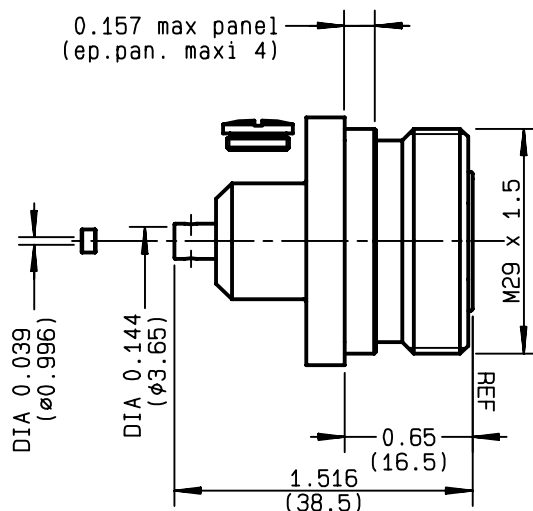
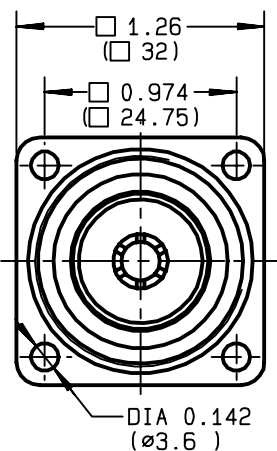


**STRAIGHT SQUARE FLANGE JACK SOLDER TYPE**  
**CABLE .141**
**R185.252.000**  
**SERIES 7-16**


NOMINAL IMPEDANCE	<b>50</b>	$\Omega$
FREQUENCY RANGE	<b>0-7.5</b>	GHz
TEMPERATURE RATING	<b>-55/+105</b>	$^{\circ}\text{C}$
V.S.W.R	<b>1.25</b> +	x F(GHz)Maxi
RF INSERTION LOSS	<b>0.05</b>	$\sqrt{F}(\text{GHz})$ dB Maxi
VOLTAGE RATING	<b>1000</b>	Veff Maxi
DIELECTRIC WITHSTANDING VOLTAGE	<b>1500</b>	Veff Mini
INSULATION RESISTANCE	<b>10000</b>	M $\Omega$ Mini
HERMETIC SEAL	<b>NA</b>	Atm.cm <sup>3</sup> /s
LEAKAGE (pressurized only)	<b>NA</b>	
MECHANICAL DURABILITY	<b>500</b>	Cycles
WEIGHT	<b>95</b>	gr
SPECIFICATION		

**CABLES : KS 2**  
**RG 402**

## OTHERS CHARACTERISTICS

**ROS : 1.10 a 3 GHz**

CABLE RETENTION	<b>500</b>	N Mini
CENTER CONTACT RETENTION		
Axial force - mating end	<b>200</b>	N Mini
Axial force - opposite end	<b>100</b>	N Mini
Torque	<b>25</b>	cm.N Mini
RECOMMENDED TORQUES		
Mating	<b>NA</b>	cm.N
Panel nut	<b>NA</b>	cm.N
Clamp nut	<b>NA</b>	cm.N

## CONNECTOR PARTS MATERIALS

BODY	BRASS
OUTER CONTACT	BRASS
CENTER CONTACT	BERYLLIUM COPPER
INSULATOR	PTFE
GASKET	
OTHERS PIECES	BRASS

## FINISH (all values are given in micrometers)

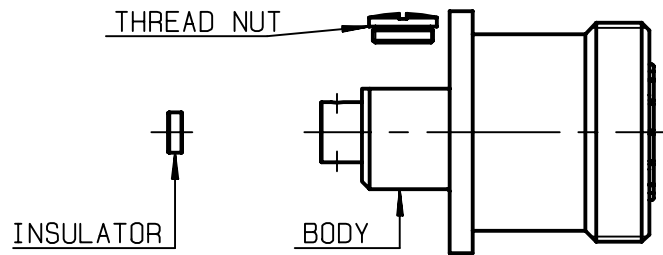
BBR 0.5 OVER SILVER 3
SILVER 5 OVER COPPER 0.5
SILVER 5 OVER COPPER 0.5
-
-
BBR 2





**R185.252.000**

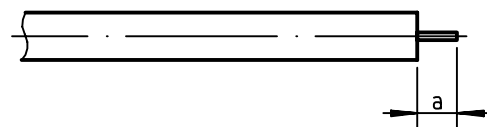
ISSUE **9944C00** SERIES **7-16**



We recommend a thermal preconditionning cable .

①

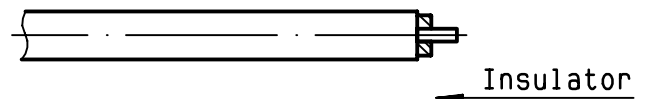
Strip the cable .  
Stripping tool R282 053 000  
Positioner R282 066 010  
-



Stripping	a	b	c	d	e
inch	0.177 0	0	0	0	0
mm	4.5				

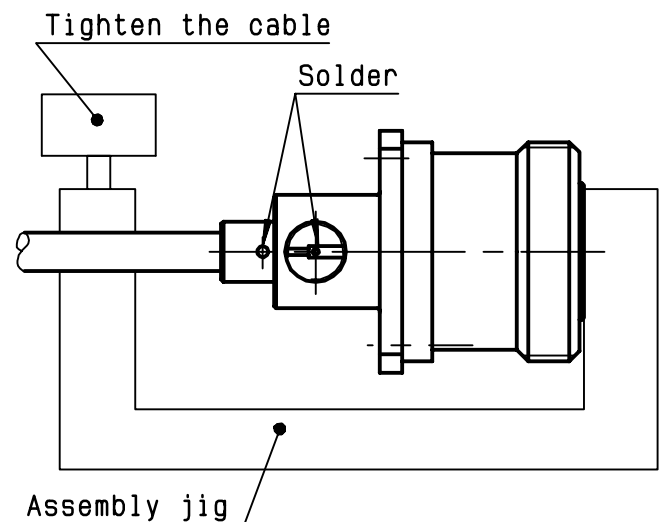
②

Slide the insulator onto the cable inner conductor .



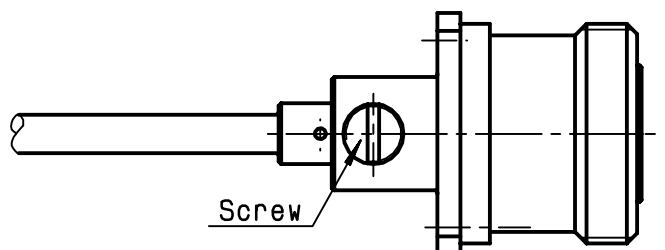
③

Introduce the cable into the connector body until it stops .  
Place the sub assembly into the assembly jig R282 740 030 (or equivalent) and thighten it .  
Solder the body onto the cable .  
Solder the body onto the cable .  
Let the asebmly cool down before removing it from the jig .



④

Screw the cap .



# Mouser Electronics

Authorized Distributor

Click to View Pricing, Inventory, Delivery & Lifecycle Information:

Radial:

[R185252000](#)