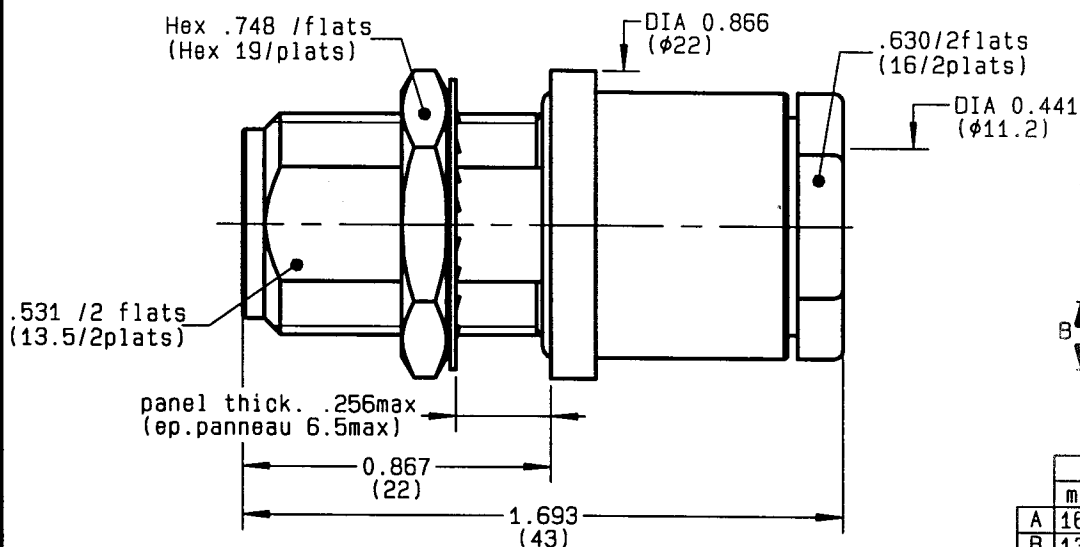
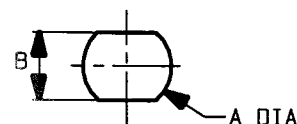


**STRAIGHT BULKHEAD JACK CLAMP TYPE**  
**PANEL SEAL CABLE 10+11/75**
**R162.332.000**
**SERIES**
**N 75**

**PERCAGE PANNEAU**  
**MOUNTING HOLE**


NOMINAL IMPEDANCE	<b>75</b>	$\Omega$
FREQUENCY RANGE	<b>0-1.5</b>	GHz
TEMPERATURE RATING	<b>-55/+155</b>	$^{\circ}\text{C}$
V.S.W.R	<b>1.06 +</b>	$\times F(\text{GHz})\text{Maxi}$
RF INSERTION LOSS	<b>0.15</b>	$\sqrt{F}(\text{GHz}) \text{ dB Maxi}$
VOLTAGE RATING	<b>1400</b>	$V_{\text{eff}} \text{ Maxi}$
DIELECTRIC WITHSTANDING VOLTAGE	<b>2500</b>	$V_{\text{eff}} \text{ Mini}$
INSULATION RESISTANCE	<b>5000</b>	$M\Omega \text{ Mini}$
HERMETIC SEAL	<b>NA</b>	$\text{Atm.cm}^3/\text{s}$
LEAKAGE (pressurized only)	<b>NA</b>	
MECHANICAL DURABILITY	<b>500</b>	Cycles
WEIGHT	<b>53.8</b>	gr
SPECIFICATION		

**CABLES : KX 8**  
**RG 11**  
**RG 144**  
**RG 216**
**OTHERS CHARACTERISTICS**

CABLE RETENTION	<b>300</b>	N Mini
CENTER CONTACT RETENTION		
Axial force - mating end	<b>NA</b>	N Mini
Axial force - opposite end	<b>NA</b>	N Mini
Torque	<b>NA</b>	cm.N Mini
RECOMMENDED TORQUES		
Mating	<b>NA</b>	cm.N
Panel nut	<b>500</b>	cm.N
Clamp nut	<b>800</b>	cm.N

**CONNECTOR PARTS**
**MATERIALS**
**FINISH**

 (all values are given)  
 in micrometers

BODY	BRASS
OUTER CONTACT	
CENTER CONTACT	BERYLLIUM COPPER
INSULATOR	PTFE
GASKET	SILICONE RUBBER
OTHERS PIECES	BRASS

BBR 2
GOLD 0.5 OVER NICKEL 2
-
-
BBR 2

**ISSUE**
**CREATION DATE**
**FILE PART-NUMBER**
**9733C00**
**07-FEB-94**

**RADIALL®**

 The information given here is subject to change without notice.  
 Design changes may be in order to improve the product.

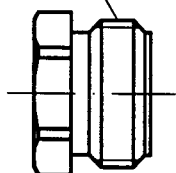
*Connect to the future*


**RADIALL®**
**R162.332.000**

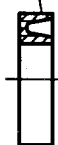
ISSUE 9733C00

 SERIES  
N 75

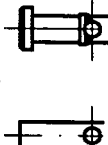
CLAMP NUT



'V' GROOVE GASKET



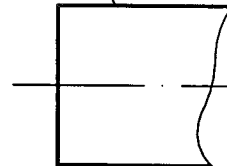
CLAMP BRAID SLEEVE



CENTRE CONTACT

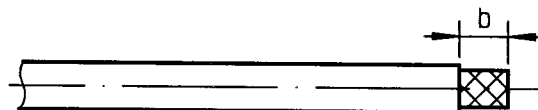


BODY



①

Strip the cable .

 -  
-  
-  
-


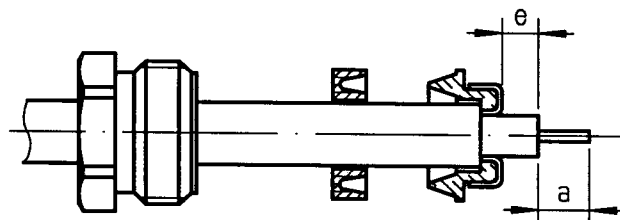
Stripping	a	b	c	d	e
inch	0.197	0.335	0	0	0.059
mm	5	8.5			1.5

②

Slide the clamp nut and the 'V' groove gasket onto the cable .

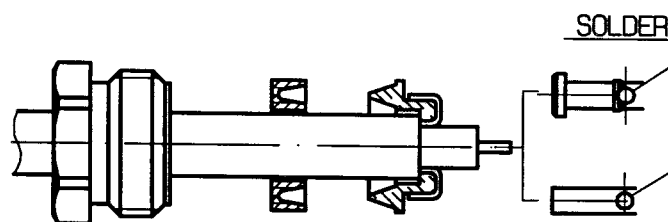
 Slide clamp braid sleeve over braid .  
Fold back braid and trim off surplus braid .

Trim back dielectric as shown .



③

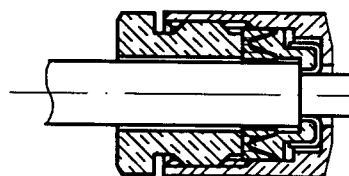
Solder the cable inner conductor into centre contact .

 -  
-  
-


④

Screw sub-assembly into the connector body .

( recommended coupling torque 70.87 in.lb )

 -  
-


Hex. : 0.63/flats

# Mouser Electronics

Authorized Distributor

Click to View Pricing, Inventory, Delivery & Lifecycle Information:

Radial:

R162332000