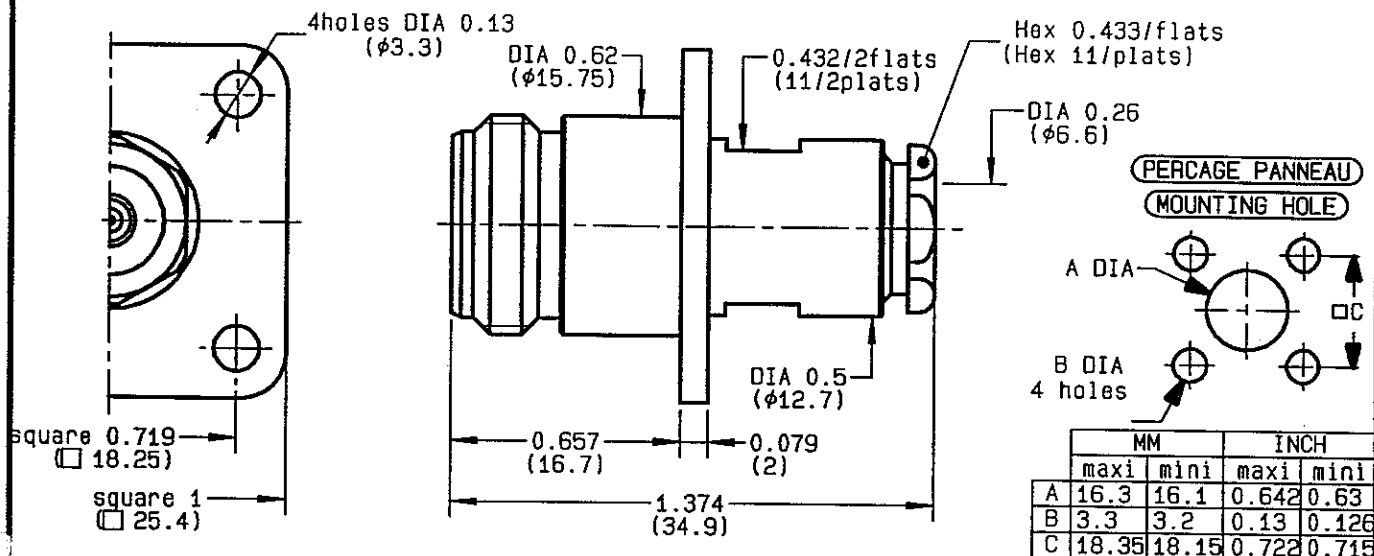


**STRAIGHT FLANGE JACK CLAMP TYPE**  
**CABLE 6/75+93 S**
**R162.262.000**  
**SERIES N 75**


NOMINAL IMPEDANCE	75	Ω
FREQUENCY RANGE	0-1.5	GHz
TEMPERATURE RATING	-55/+155	°C
V.S.W.R	1.06 +	x F(GHz)Maxi
RF INSERTION LOSS	0.15	√F(GHz) dB Maxi
VOLTAGE RATING	850	Veff Maxi
DIELECTRIC WITHSTANDING VOLTAGE	1500	Veff Mini
INSULATION RESISTANCE	5000	MΩMini
HERMETIC SEAL	NA	Atm.cm <sup>3</sup> /s
LEAKAGE (pressurized only)	NA	
MECHANICAL DURABILITY	500	Cycles
WEIGHTH	36.1	gr
SPECIFICATION		

**CABLES : KX 6A**  
**R6 59**  
**R6 62**

## OTHERS CHARACTERISTICS

CABLE RETENTION	200	N Mini
CENTER CONTACT RETENTION		
Axial force - mating end	NA	N Mini
Axial force - opposite end	NA	N Mini
Torque	NA	cm.N Mini
RECOMMENDED TORQUES		
Mating	NA	cm.N
Panel nut	NA	cm.N
Clamp nut	450	cm.N

## CONNECTOR PARTS

## MATERIALS

## FINISH

(all values are given)  
in micrometers

BODY	BRASS
OUTER CONTACT	BRASS
CENTER CONTACT	BERYLLIUM COPPER
INSULATOR	PTFE
GASKET	
OTHERS PIECES	BRASS

BBR 2
BBR 2
GOLD 0.5 OVER NICKEL 2
-
-
BBR 2

ISSUE

CREATION DATE

FILE PART-NUMBER

9733H00

26-OCT-93


**RADIALL®**

The information given here is subject to change without notice.  
Design changes may be in order to improve the product.

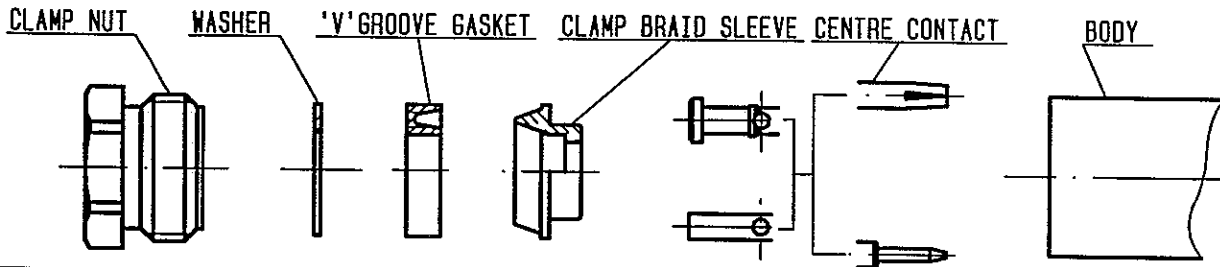
*Connect to the future*



**RADIALL®**

**R162.262.000**

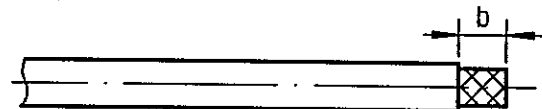
ISSUE 9733H00 SERIES N 75



①

Strip the cable .

-  
-  
-  
-

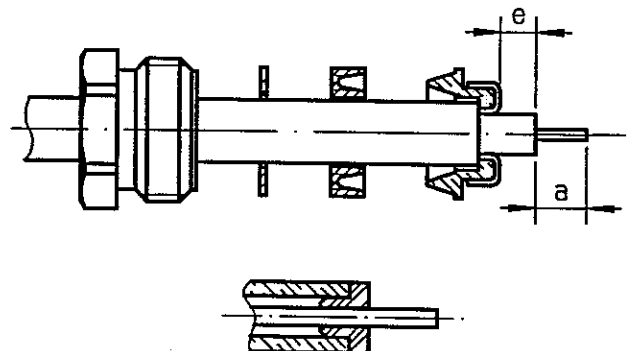


Stripping	a	b	c	d	e
inch	0.157	0.315	0	0	0.079
mm	4	8			2

②

Slide the clamp nut , the washer and the 'V'groove gasket onto the cable .  
Slide clamp braid sleeve over braid .  
Fold back braid and trim off surplus braid .  
Trim back dielectric as shown .

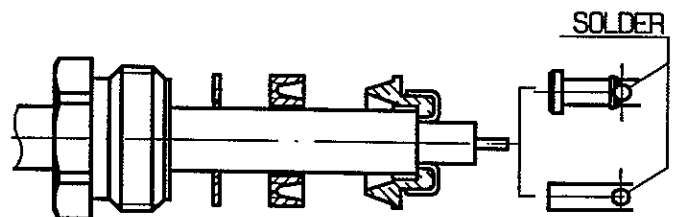
NOTA:For air-space PE cables , "e" =0.039  
Introduce insulator onto dielectric cable .



③

Solder the cable inner conductor into centre contact .

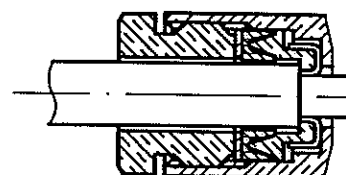
-  
-  
-



④

Screw sub-assembly into the connector body .  
( recommended coupling torque 39.82 in.lb )

-  
-



Hex. : 0.433/flats

# Mouser Electronics

Authorized Distributor

Click to View Pricing, Inventory, Delivery & Lifecycle Information:

Radial:

[R162262000](#) [R162262000W](#)