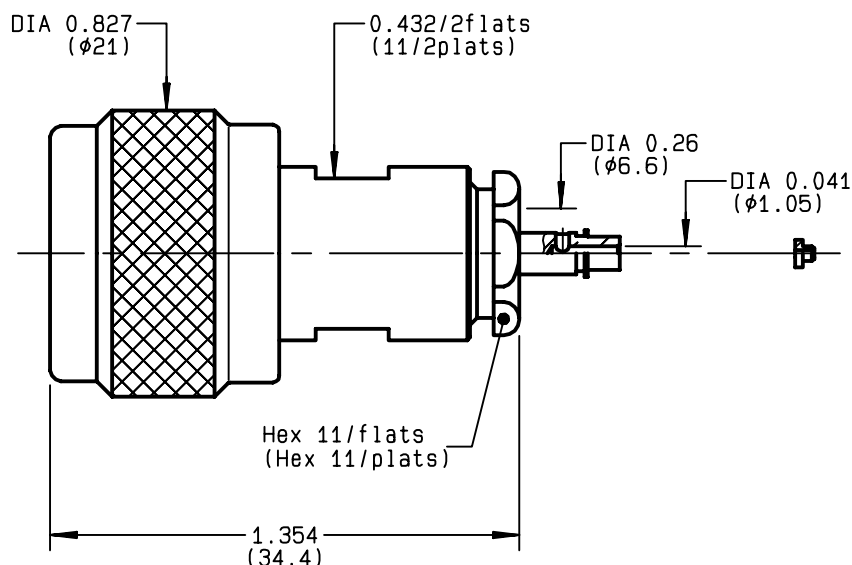


STRAIGHT PLUG CLAMP TYPE
CABLE 6/75+93 .
R161.012.000
SERIES N


NOMINAL IMPEDANCE	50	Ω
FREQUENCY RANGE	0-11	GHz
TEMPERATURE RATING	-55/+155	°C
V.S.W.R	NA +	x F(GHz)Maxi
RF INSERTION LOSS	0.048	\sqrt{F} (GHz) dB Maxi
VOLTAGE RATING	850	Veff Maxi
DIELECTRIC WITHSTANDING VOLTAGE	1500	Veff Mini
INSULATION RESISTANCE	5000	M Ω Mini
HERMETIC SEAL	NA	Atm.cm ³ /s
LEAKAGE (pressurized only)	NA	
MECHANICAL DURABILITY	500	Cycles
WEIGHT	32.5	gr
SPECIFICATION		

CABLES : **BICC T3304****KX 6A****RG 59****RG 62****RG 71**

OTHERS CHARACTERISTICS

CABLE RETENTION	200	N Mini
CENTER CONTACT RETENTION		
Axial force - mating end	NA	N Mini
Axial force - opposite end	27	N Mini
Torque	NA	cm.N Mini
RECOMMENDED TORQUES		
Mating	130	cm.N
Panel nut	NA	cm.N
Clamp nut	450	cm.N

CONNECTOR PARTS	MATERIALS	FINISH	(all values are given) in micrometers
BODY	BRASS	BBR 2	
OUTER CONTACT	BRASS	BBR 2	
CENTER CONTACT	BRASS	GOLD 0.5 OVER NICKEL 2	
INSULATOR	PTFE	-	
GASKET	SILICONE RUBBER	-	
OTHERS PIECES	BRASS	BBR 2	

ISSUE

9809C02

CREATION DATE

27/06/1995

FILE PART-NUMBER

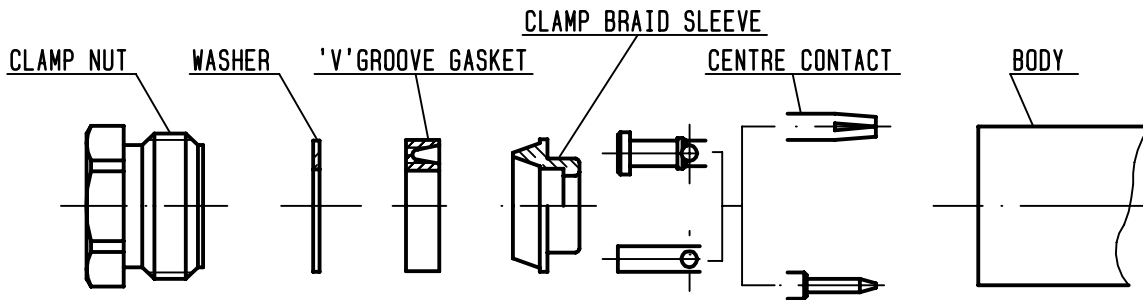
EPC 96-07
RADIALL®

The information given here is subject to change without notice.
Design changes may be in order to improve the product .

Connect to the future



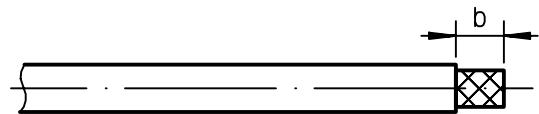
R161.012.000
 ISSUE 9809C02 SERIES N



①

Strip the cable .

-
-
-
-



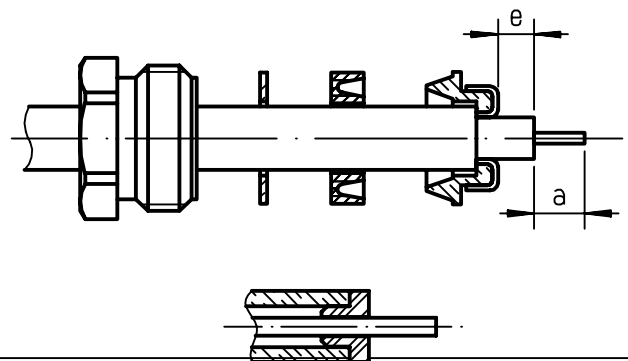
Stripping	a	b	c	d	e
inch	0.157	0.295	0	0	0.039
mm	4	7.5			1

②

Slide the clamp nut , the washer and the 'V'groove gasket onto the cable .
 Slide clamp braid sleeve over braid .
 Fold back braid and trim off surplus braid .
 Trim back dielectric as shown .

-

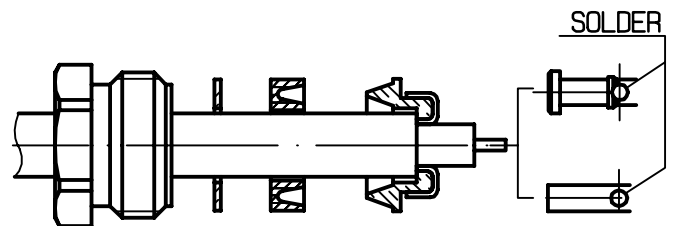
NOTA: For air-space PE cables , "e" = 0 .
 Introduce insulator onto dielectric cable .



③

Solder the cable inner conductor into centre contact .

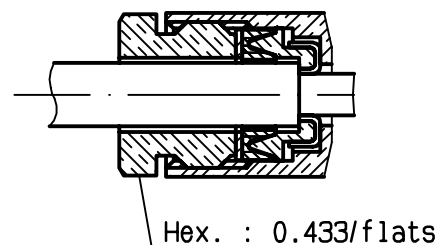
-
-
-
-
-



④

Screw sub-assembly into the connector body .
 (recommended coupling torque 39.83 in.lb)

-
-



Mouser Electronics

Authorized Distributor

Click to View Pricing, Inventory, Delivery & Lifecycle Information:

Radial:

R161012000