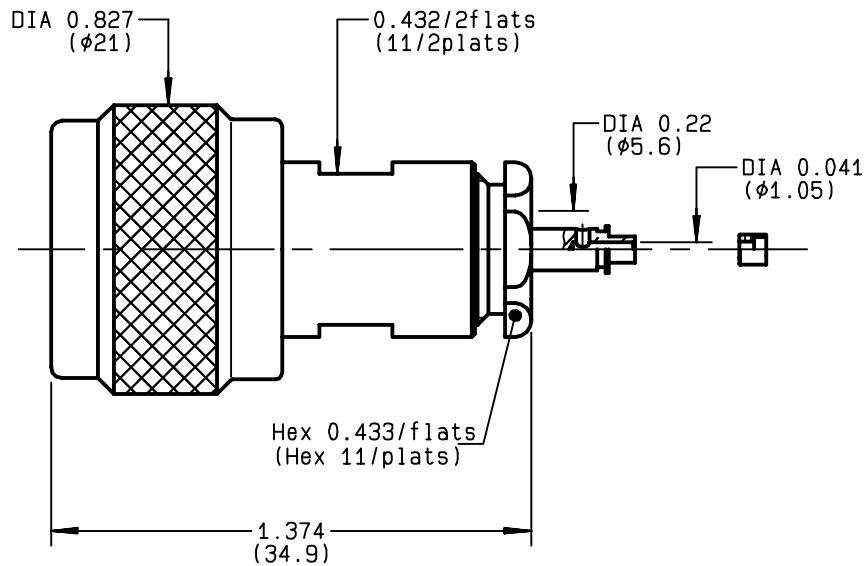


**STRAIGHT PLUG CLAMP TYPE**  
**CABLE 5/50 S+D**
**R161.010.000**  
**SERIES N**


|                                 |                 |                                |
|---------------------------------|-----------------|--------------------------------|
| NOMINAL IMPEDANCE               | <b>50</b>       | $\Omega$                       |
| FREQUENCY RANGE                 | <b>0-11</b>     | GHz                            |
| TEMPERATURE RATING              | <b>-55/+155</b> | $^{\circ}\text{C}$             |
| V.S.W.R                         | <b>1.30</b> +   | x F(GHz)Maxi                   |
| RF INSERTION LOSS               | <b>0.048</b>    | $\sqrt{F}(\text{GHz})$ dB Maxi |
| VOLTAGE RATING                  | <b>850</b>      | Veff Maxi                      |
| DIELECTRIC WITHSTANDING VOLTAGE | <b>1500</b>     | Veff Mini                      |
| INSULATION RESISTANCE           | <b>5000</b>     | M $\Omega$ Mini                |
| HERMETIC SEAL                   | <b>NA</b>       | Atm.cm <sup>3</sup> /s         |
| LEAKAGE (pressurized only)      | <b>NA</b>       |                                |
| MECHANICAL DURABILITY           | <b>500</b>      | Cycles                         |
| WEIGHT                          | <b>33.5</b>     | gr                             |
| SPECIFICATION                   |                 |                                |

CABLES : **KX 15**  
**KX 23**  
**RG 141**  
**RG 142**  
**RG 142 FTX**  
**RG 223**  
**RG 400**  
**RG 58**

## OTHERS CHARACTERISTICS

|                            |            |           |
|----------------------------|------------|-----------|
| CABLE RETENTION            | <b>150</b> | N Mini    |
| CENTER CONTACT RETENTION   |            |           |
| Axial force - mating end   | <b>27</b>  | N Mini    |
| Axial force - opposite end | <b>27</b>  | N Mini    |
| Torque                     | <b>NA</b>  | cm.N Mini |
| RECOMMENDED TORQUES        |            |           |
| Mating                     | <b>130</b> | cm.N      |
| Panel nut                  | <b>NA</b>  | cm.N      |
| Clamp nut                  | <b>450</b> | cm.N      |

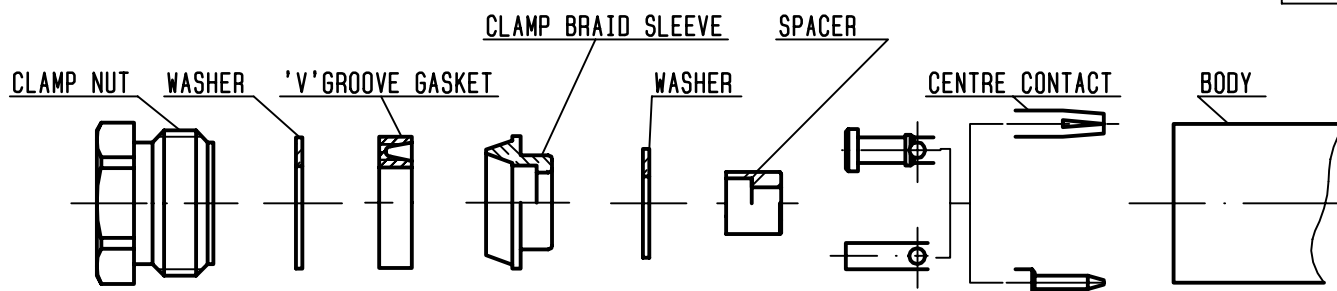
| CONNECTOR PARTS | MATERIALS       | FINISH                 | (all values are given )<br>in micrometers |
|-----------------|-----------------|------------------------|---|
| BODY            | BRASS           | BBR 2                  |   |
| OUTER CONTACT   | BRASS           | BBR 2                  |   |
| CENTER CONTACT  | BRASS           | GOLD 0.5 OVER NICKEL 2 |   |
| INSULATOR       | PTFE            | -                      |   |
| GASKET          | SILICONE RUBBER | -                      |   |
| OTHERS PIECES   | BRASS           | BBR 2                  |   |

|                |                   |                  |
|----------------|-------------------|------------------|
| ISSUE          | CREATION DATE     | FILE PART-NUMBER |
| <b>0306F01</b> | <b>12/10/1992</b> | <b>EPC 96-07</b> |

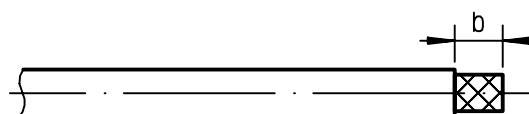

**RADIALL®**

The information given here is subject to change without notice.  
 Design changes may be in order to improve the product .

*Connect to the future*

**R161.010.000**ISSUE **0306F01** SERIES**N****①**

Strip the cable .

-  
-  
-  
-

| Stripping | a     | b     | c | d | e     |
|-----------|-------|-------|---|---|-------|
| inch      | 0.157 | 0.295 | 0 | 0 | 0.079 |
| mm        | 4     | 7.5   |   |   | 2     |

**②**

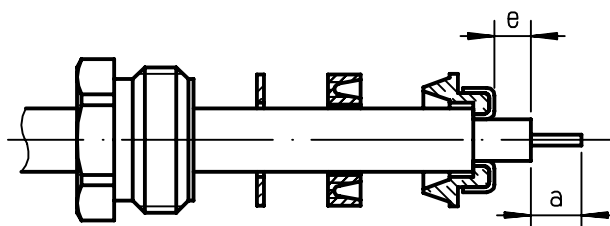
Slide the clamp nut , the washer and the 'V' groove gasket onto the cable .

Slide clamp braid sleeve over braid .

Fold back braid and trim off surplus braid .

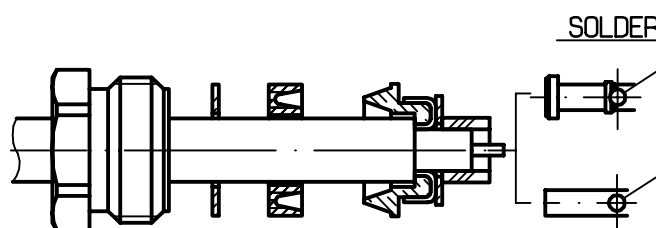
Trim back dielectric as shown .

-

**③**

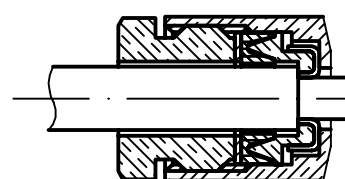
Slide the washer and the spacer onto the dielectric .

Solder the cable inner conductor into centre contact .

-  
-  
-**④**

Screw sub-assembly into the connector body .

( recommended coupling torque 39.83 in.lb )

-  
-

Hex. : 0.433/flats

# Mouser Electronics

Authorized Distributor

Click to View Pricing, Inventory, Delivery & Lifecycle Information:

Radial:

[R161010000](#) [R161010000W](#)