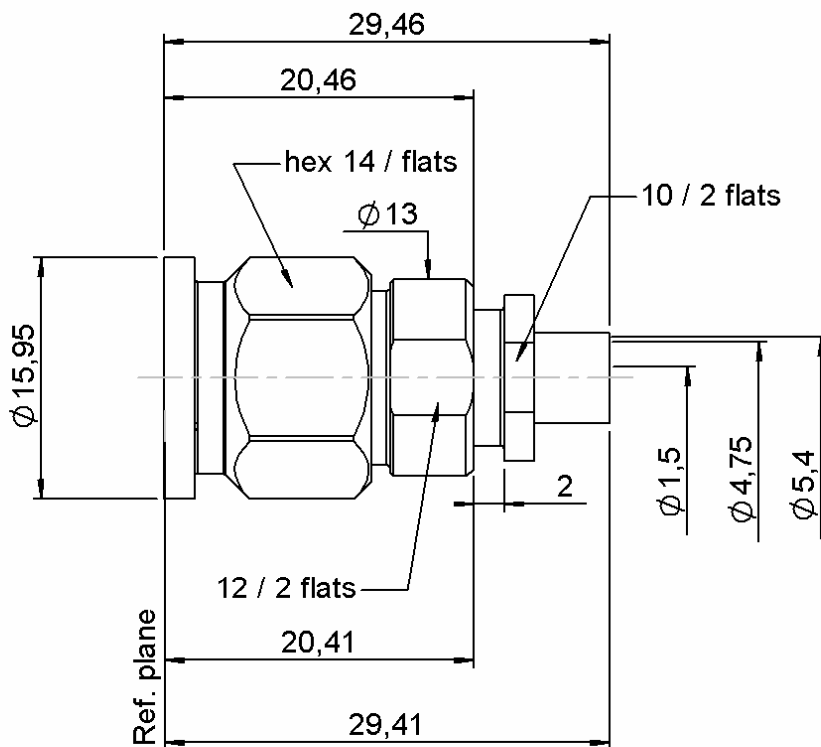


**STRAIGHT PLUG SOLDER TYPE**

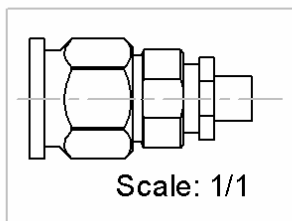
**CABLE SHF 5+5M**

**R143.065.L01**

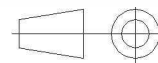
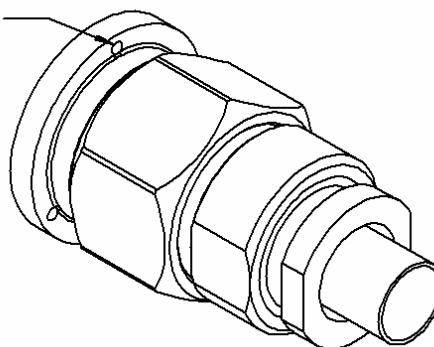
Series : TNC-18



3 holes  $\varnothing 0,95$  at  $120^\circ$



**MAT ASPECT**



All dimensions are in mm.

COMPONENTS	MATERIALS	PLATING ( $\mu\text{m}$ )
BODY	STAINLESS STEEL (316L)	PASSIVATED.
CENTER CONTACT	BRASS	GOLD 2.5 OVER NICKEL 2
OUTER CONTACT	-	-
INSULATOR	PTFE	-
GASKET	FLUOROSILICON	-
OTHERS PARTS	ST. STEEL (316L) , BRASS	GOLD , PASSIVATED
-	-	-
-	-	-

Issue : 1203 A

In the effort to improve our products, we reserve the right to make changes judged to be necessary.



**RADIALL**

**STRAIGHT PLUG SOLDER TYPE****CABLE SHF 5+5M****R143.065.L01**

Series : TNC-18

**PACKAGING**

Standard	Unit	Other
<b>100</b>	<b>'W' option</b>	<b>Contact us</b>

**ELECTRICAL CHARACTERISTICS**

Impedance	<b>50</b>	$\Omega$
Frequency	<b>0-18</b>	GHz
VSWR	<b>1.12 + 0,0000</b>	x F(GHz) Maxi
Insertion loss	<b>0.06</b>	$\sqrt{F}(\text{GHz})$ dB Maxi
RF leakage	- ( <b>90</b> )	- F(GHz)) dB Maxi
Voltage rating	<b>500</b>	Veff Maxi
Dielectric withstanding voltage	<b>1500</b>	Veff mini
Insulation resistance	<b>5000</b>	M $\Omega$ mini

**MECHANICAL CHARACTERISTICS**

Center contact retention		
Axial force – Mating end	<b>27</b>	N mini
Axial force – Opposite end	<b>27</b>	N mini
Torque	<b>NA</b>	N.cm mini

Recommended torque		
Mating	<b>330</b>	N.cm
Panel nut	<b>NA</b>	N.cm
Clamp nut	<b>350</b>	N.cm
A/F clamp nut	<b>10,0000</b>	mm

Mating life	<b>500</b>	Cycles mini
Weight	<b>19,0000</b>	g

**ENVIRONMENTAL**

Operating temperature	<b>-65/+165</b>	°C
Hermetic seal	<b>NA</b>	Atm.cm3/s
Panel leakage	<b>IP67</b>	

**SPECIFICATION****CABLE ASSEMBLY**

Stripping	a	b	c	d	e	f
mm	19,0	3,50	0,00	0,00	0,00	0,00

Assembly instruction :

Recommended cable(s)

SHF5MAF-2

SHF5LI

SHF5M

Characteristics indicated on this data sheet are those that can be achieved with the highest performance cable. Intrinsic limitations of the cable may diminish the performance of the assembly

Cable retention

- pull off	<b>*</b>	N mini
- torque	<b>NA</b>	N.cm

**TOOLING**

Part Number	Description	Hexagon
.	.	.

**OTHER CHARACTERISTICS**

\* See the TDS cable assembly

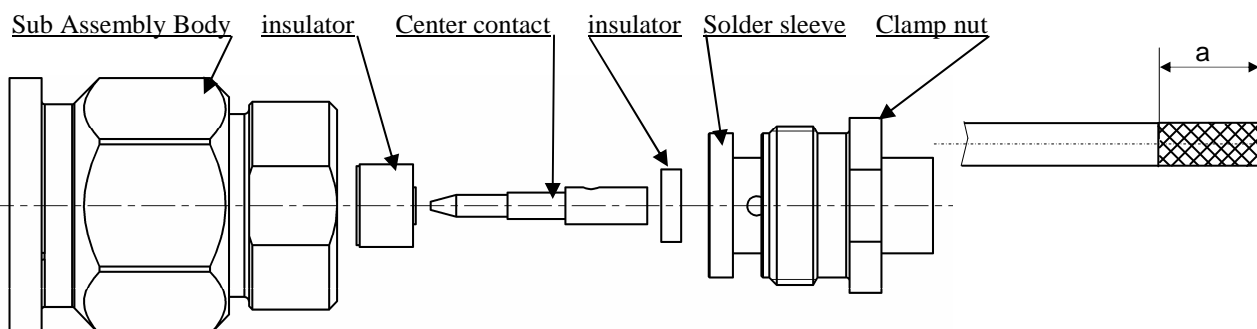
Issue : 1203 A

In the effort to improve our products, we reserve the right to make changes judged to be necessary.

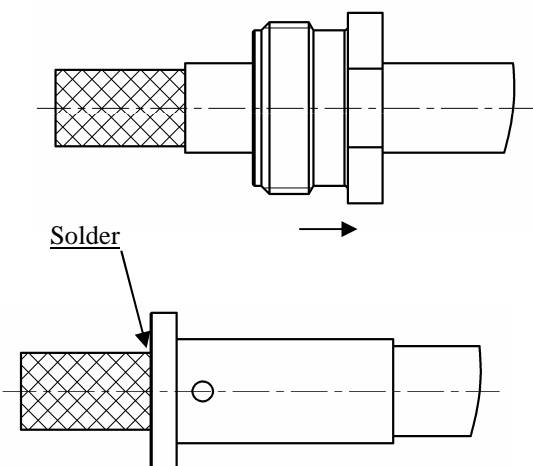
**RADIALL®**

**STRAIGHT PLUG SOLDER TYPE****CABLE SHF 5+5M****R143.065.L01**

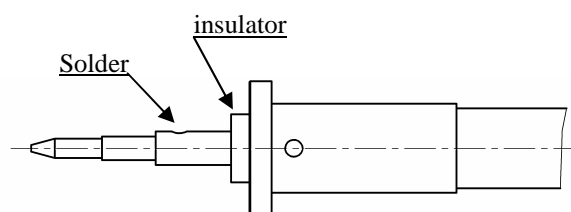
Series : TNC-18

**COMPONENTS****STRIPPING DIMENSIONS****1**

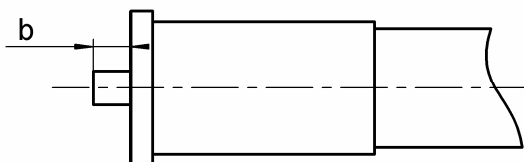
Strip the cable.  
Slide the clamp nut onto the cable.  
Solder the ferrule onto the braid of the cable.

**3**

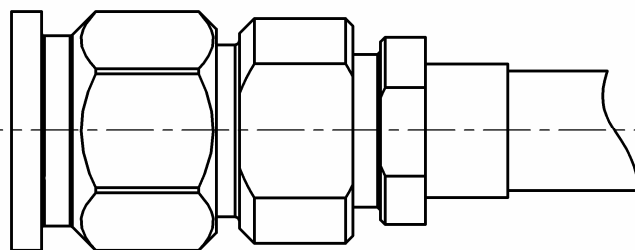
Slide the center contact onto the cable inserting  
between contact and ferrule the insulator.  
Solder the contact onto the inner conductor.

**2**

Cut the excess of braid and dielectric leveled  
on the sleeve.

**4**

Mount the whole body into the main sub assembly  
and screw the solder sleeve.  
(recommended coupling torque 350 N/cm)

**Issue : 1203 A**

In the effort to improve our products, we reserve the right to make changes judged to be necessary.

**RADIALL®**

# Mouser Electronics

Authorized Distributor

Click to View Pricing, Inventory, Delivery & Lifecycle Information:

Radial:

[R143065L01](#)