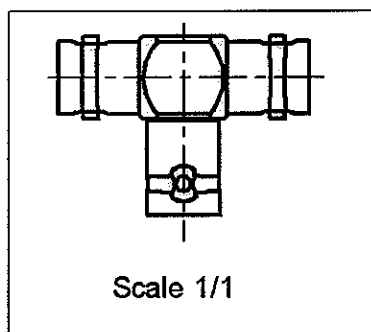
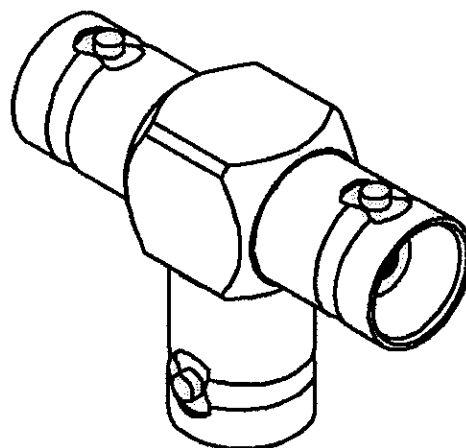
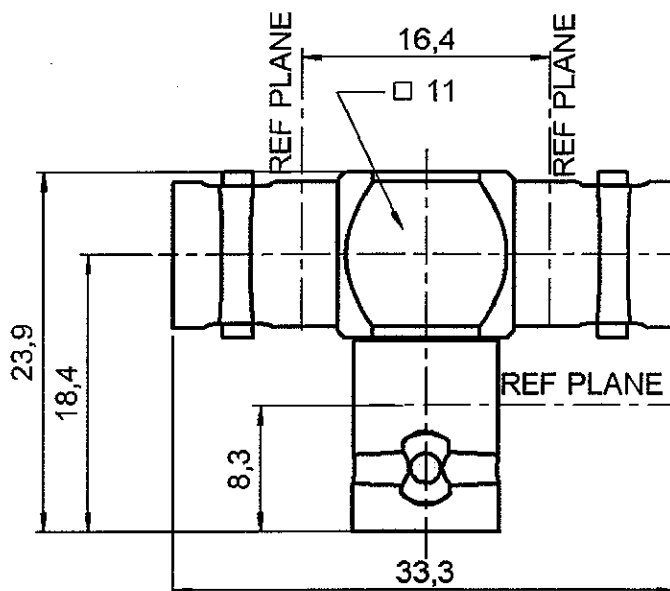


TE FEMALE-FEMALE/FEMALE ADAPTOR

R141.782.000

Series : BNC



All dimensions are in mm.

COMPONENTS	MATERIALS	PLATING
BODY	BRASS	NICKEL 2 μm
CENTRE CONTACT	BERYLLIUM COPPER	GOLD 0.5 OVER NICKEL 2 μm
OUTER CONTACT	-	- μm
INSULATOR	PTFE	- μm
GASKET	-	- μm
OTHERS PARTS	-	- μm
.	-	- μm
.	-	- μm



Edition : 9848 C

Design changes may be in order to improve the product.

TE FEMALE-FEMALE/FEMALE ADAPTOR**R141.782.000**Series : **BNC****ELECTRICAL CHARACTERISTICS**

Impedance		50 Ω
Frequency		0-4 GHz
VSWR	NA +	0.000 x F(GHz) Maxi
Insertion loss		0.175 $\sqrt{F(GHz)}$ dB Maxi
RF leakage	- (57 - F(GHz)) dB mini
Voltage rating		500 Veff Maxi
Dielectric withstanding voltage		1500 Veff mini
Insulation resistance		5000 MΩ mini

SPECIFICATION**ENVIRONMENTAL**

Operating temperature	-65/+165 °C
Hermetic seal	NA Atm.cm3/s
Leakage – pressurised only	NA Mpa

OTHERS CHARACTERISTICSAssembly instruction **NA**Others :
-**MECHANICAL CHARACTERISTICS**

Centre contact retention	
Axial force – Mating end	18 N mini
Axial force – Opposite end	18 N mini
Torque	2.8 N.cm mini

Recommended torque	
Mating	NA N.cm
Panel nut	NA N.cm

Mating life	500 Cycles mini
Weight	19.000 g



Mouser Electronics

Authorized Distributor

Click to View Pricing, Inventory, Delivery & Lifecycle Information:

Radial:

[R141782000](#)