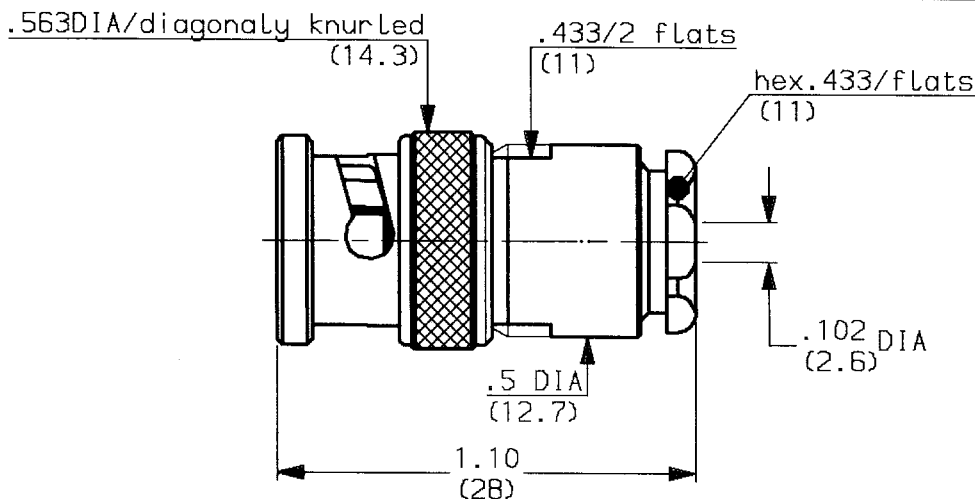


STRAIGHT PLUG-CLAMP TYPE
CABLE 2.2/50 DBR



weight - oz (- g)

(CABLE : TS 2619)

CHARACTERISTICS

NOMINAL IMPEDANCE	50 Ω
FREQUENCY RANGE	0-4 GHz
TEMPERATURE RATING	-65/+165 °C
VSWR	1,40 Maxi
RF INSERTION LOSS to 3 GHz	0,2 dB Maxi
VOLTAGE RATING	500 Vrms Maxi
DIELECTRIC WITHSTANDING VOLTAGE	1500 Vrms mini
INSULATION RESISTANCE	5000 M Ω mini
HERMETIC SEAL	NA cc/s - Atm.cm3/s
LEAKAGE (pressurized only)	NA psi - MPa

STANDARDISATION	NF-C-93564 CECC 22120
-----------------	--------------------------

CABLE RETENTION	24,75 Lb mini 110 N
CENTER CONTACT RETENTION	
Axial force - mating end	5.94 Lb mini 27 N
Axial force - opposite end	5.94 Lb mini 27 N
Torque (Min)	NA Inch.oz - cm.N
RECOMMENDED TORQUES	
Mating	NA Inch.Lb - cm.N
Panel nut	NA Inch.Lb - cm.N
Clamp nut	39.825 Inch.Lb 450 cm.N

CONSTRUCTION

CONNECTOR PARTS	MATERIALS	FINISH
BODY	BRASS	NICKEL
OUTER CONTACT	BRASS	NICKEL
CENTER CONTACT	BRASS	GOLD
INSULATORS	PTFE	-
-	-	-
-	-	-
-	-	-
-	-	-
-	-	-

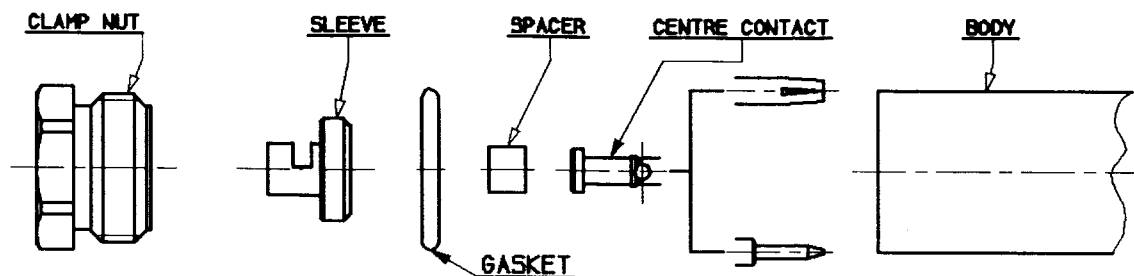
ISSUE	REVISION No	DESCRIPTION	BY	DATE
.
.
.
.

Initiated on 22-MAY-92

Superseded on

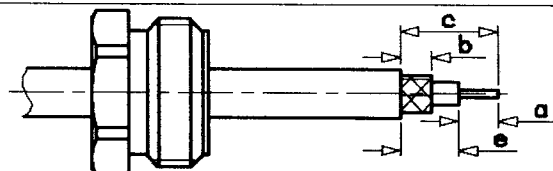
The Information given here is subject to change without notice. Design changes may be in order to improve the product.

STRAIGHT PLUG-CLAMP TYPE
CABLE 2.2/50 DBR



①

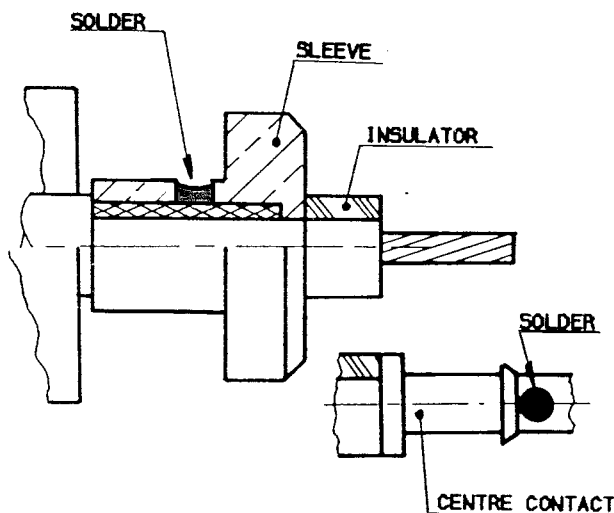
- 1-1 Slide clamp nut onto the cable .
- 1-2 Strip the cable .
- 1-3 Tin the cable inner conductor .



Stripping	a	b	c	d	e
Inch	.157	.216	.492	-	.334
mm	4	5.5	12.5	-	8.5

②

- 2-1 Slide the sleeve between the braid .
- 2-2 Solder the braid into the sleeve .
- 2-3 Slide the spacer .

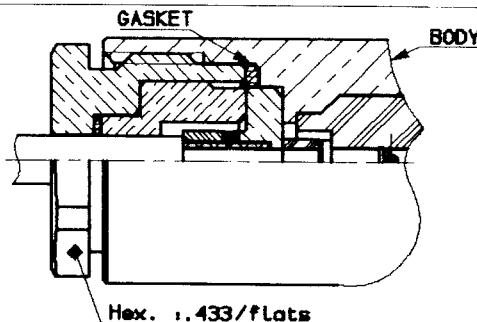


③

- 3-1 Solder the cable inner conductor into centre contact .
- 3-2 Slide the back nut over the clamp assembly .

④

- 4-1 Slide the gasket into the connector body .
- 4-2 Screw sub-assembly into the connector body .
recommended coupling torque
39.825 in.lb)



ISSUE	REVISION No	DESCRIPTION	BY	DATE
.
.
.
.

Initiated on 21-MAY-92

The information given here is subject to change without notice. Design changes may be in order to improve the product.



Superseded on

Mouser Electronics

Authorized Distributor

Click to View Pricing, Inventory, Delivery & Lifecycle Information:

Radial:

[R141003420](#)