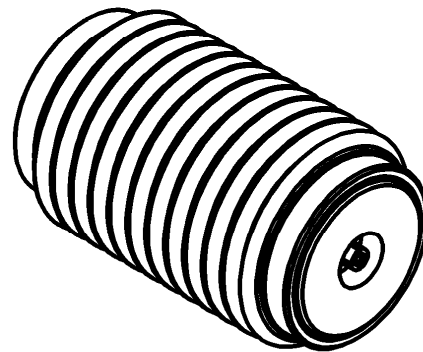
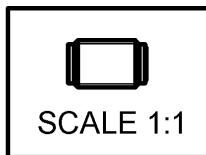
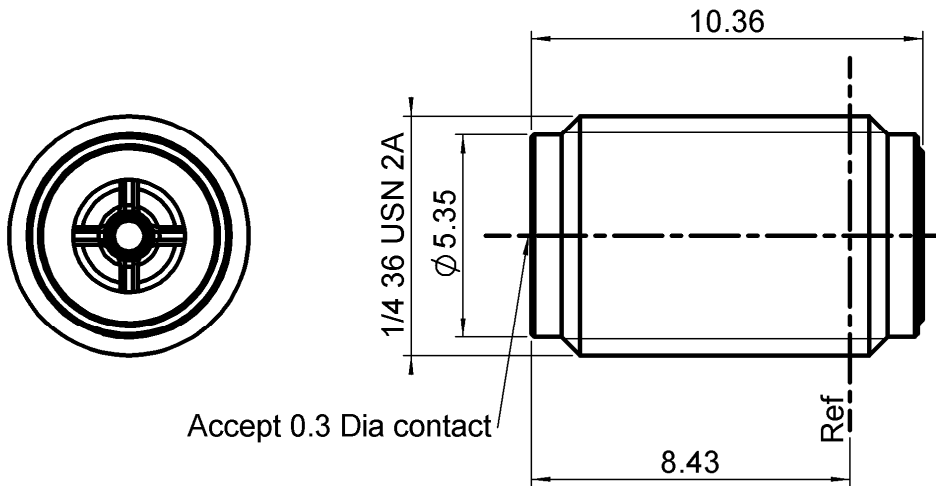


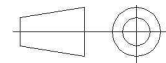
**UNIVERSAL SCREW RECEPTACLE**  
**FOR AXIS 0.3 MM**

**R127.601.001**

Series : SMA2.9



All dimensions are in mm.



| COMPONENTS     | MATERIALS             | PLATINGS (μm)          |
|----------------|-----------------------|------------------------|
| BODY           | STAINLESS STEEL       | PASSIVATED             |
| CENTER CONTACT | BERYLLIUM COPPER      | GOLD 1.3 OVER NICKEL 2 |
| OUTER CONTACT  | -                     | -                      |
| INSULATOR      | POLYIMIDE KAPTON 500H | -                      |
| GASKET         | -                     | -                      |
| OTHERS PARTS   | BRASS                 | GOLD 0.2 OVER NICKEL 2 |
| -              | -                     | -                      |
| -              | -                     | -                      |

Issue : 1018 C

In the effort to improve our products, we reserve the right to make changes judged to be necessary.



**UNIVERSAL SCREW RECEPTACLE****FOR AXIS 0.3 MM****R127.601.001**

Series : SMA2.9

**PACKAGING**

| Standard | Unit | Other             |
|----------|------|-------------------|
| <b>1</b> | -    | <b>Contact us</b> |

**SPECIFICATION****ELECTRICAL CHARACTERISTICS**

|                                 |                      |                                |
|---------------------------------|----------------------|--------------------------------|
| Impedance                       | <b>50</b>            | $\Omega$                       |
| Frequency                       | <b>0-46</b>          | GHz                            |
| VSWR                            | <b>1.05 + 0,0060</b> | x F(GHz) Maxi                  |
| Insertion loss                  | -                    | $\sqrt{F}(\text{GHz})$ dB Maxi |
| RF leakage                      | - (                  | - F(GHz)) dB Maxi              |
| Voltage rating                  | <b>250</b>           | Veff Maxi                      |
| Dielectric withstanding voltage | <b>750</b>           | Veff mini                      |
| Insulation resistance           | <b>5000</b>          | M $\Omega$ mini                |

**ENVIRONMENTAL**

|                       |                 |                    |
|-----------------------|-----------------|--------------------|
| Operating temperature | <b>-65,+165</b> | $^{\circ}\text{C}$ |
| Hermetic seal         | <b>NA</b>       | Atm.cm3/s          |
| Panel leakage         | <b>NA</b>       |                    |

**OTHERS CHARACTERISTICS**

Assembly instruction

Others :

-

**MECHANICAL CHARACTERISTICS**

|                            |                     |
|----------------------------|---------------------|
| Center contact retention   |                     |
| Axial force – Mating end   | <b>15</b> N mini    |
| Axial force – Opposite end | <b>15</b> N mini    |
| Torque                     | <b>NA</b> N.cm mini |

## Recommended torque

|           |                 |
|-----------|-----------------|
| Mating    | <b>NA</b> N.cm  |
| Panel nut | <b>190</b> N.cm |

|             |                        |
|-------------|------------------------|
| Mating life | <b>500</b> Cycles mini |
| Weight      | <b>1,8040</b> g        |

Issue : 1018 C

In the effort to improve our products, we reserve the right to make changes judged to be necessary.

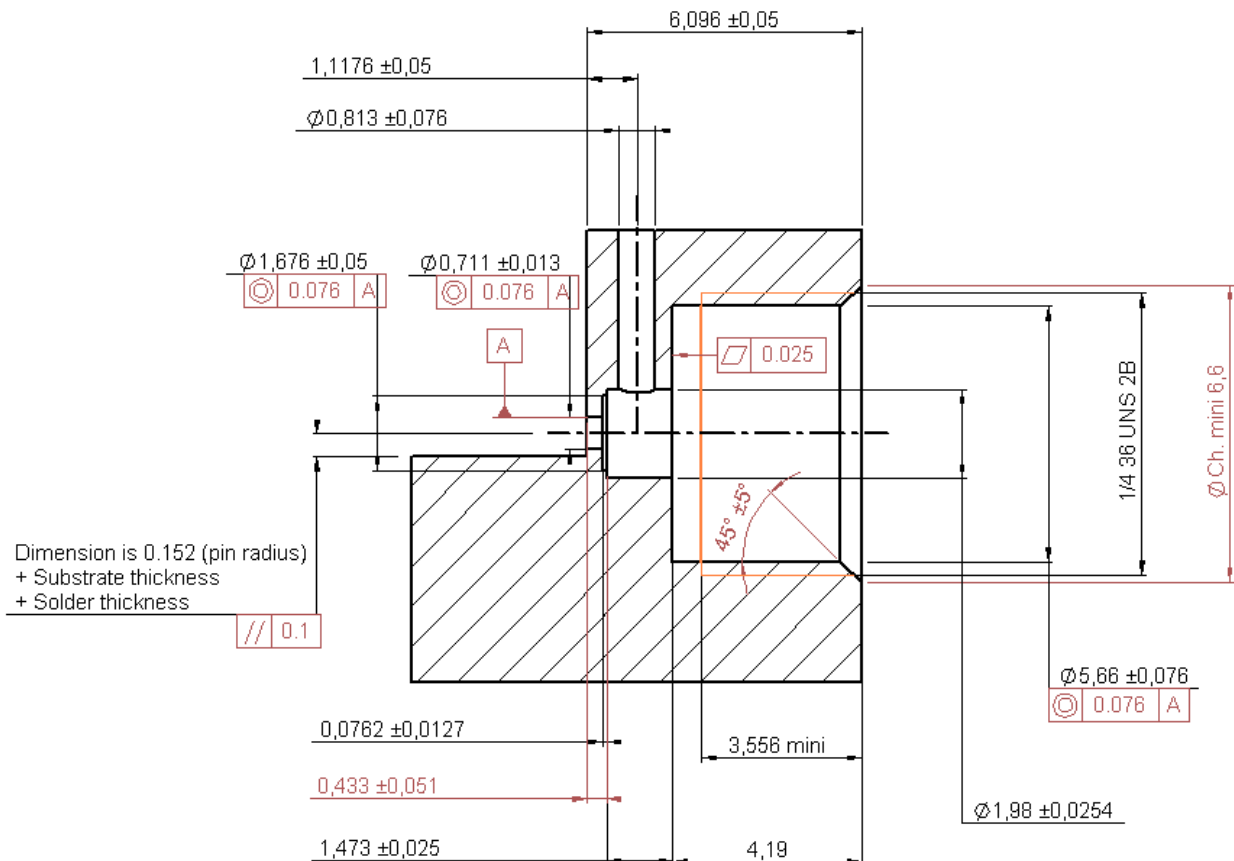


## UNIVERSAL SCREW RECEPTACLE

FOR AXIS 0.3 MM

**R127.601.001**

Series : SMA2.9

**Panel drilling for sercewing receptacle SMA 2.9**

To obtain correct concentricity and dimensions on the receptacle piercing,  
we recommend to use RADIALl special tools:

**R282.080.000** piercing tool  
and **R282.082.000** screwing tool

Issue : 1018 C

In the effort to improve our products, we reserve the right to make changes judged to be necessary.



# UNIVERSAL SCREW RECEPTACLE

FOR AXIS 0.3 MM

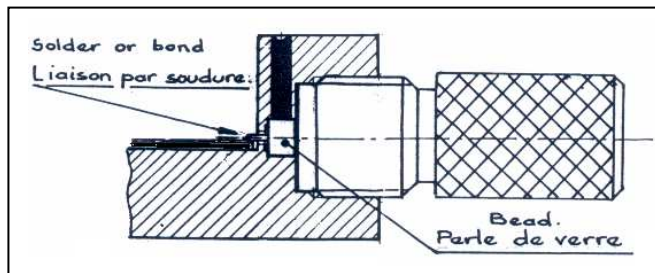
# R127.601.001

Series : SMA2.9

1

## SOLDERING of the glass bead

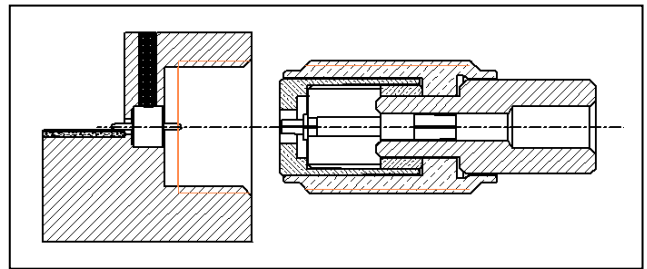
Set up of the R280.760.000 glass bead in the housing.  
keep the glass bead into position thanks to  
R282.745.000 positionner



3

## MOUNTING of the flange on the box

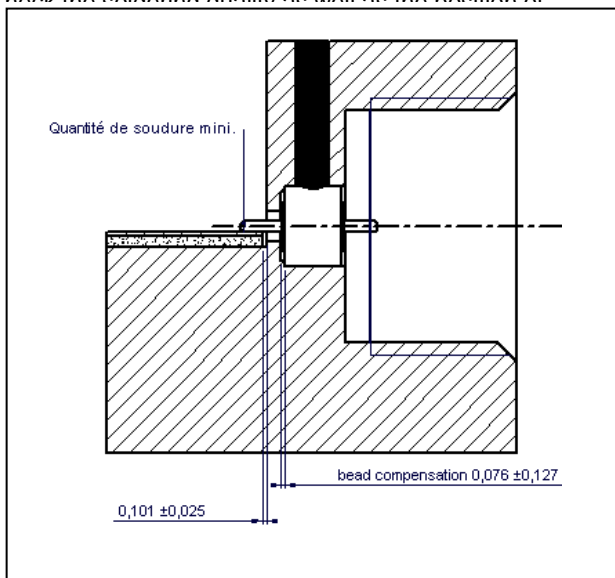
Set up the R282.860.000 position gauge on the flange  
to ensure a good concentricity.  
Screw the assembly on the housing.



2

## POSITION of the glass bead after soldering

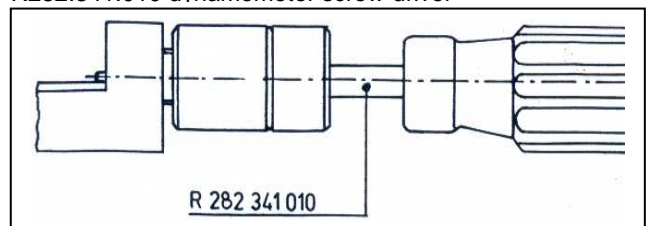
Check the soldering quality as well as the position of



4

## Locking of the flange on the box

Lock the flange on the housing thanks to  
R282.341.010 dynamometer screw-driver



Issue : 1018 C

In the effort to improve our products, we reserve the right to make changes judged to be necessary.

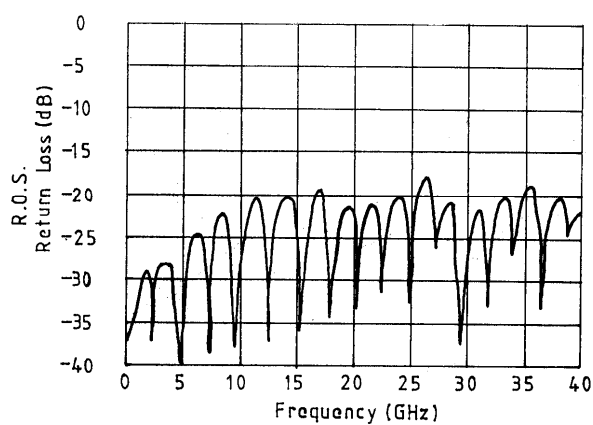


## UNIVERSAL SCREW RECEPTACLE

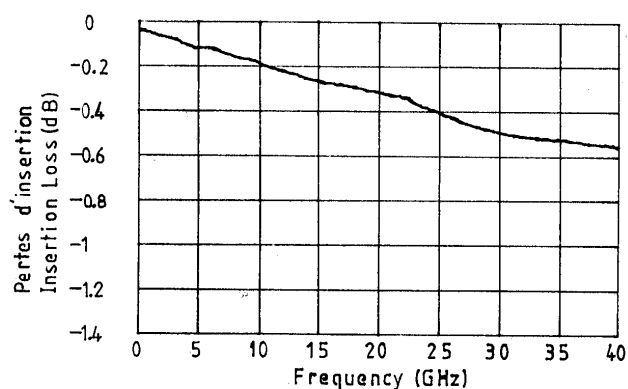
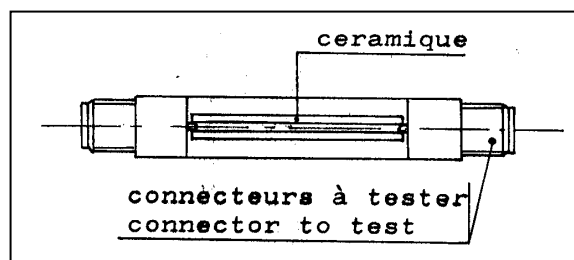
FOR AXIS 0.3 MM

**R127.601.001**

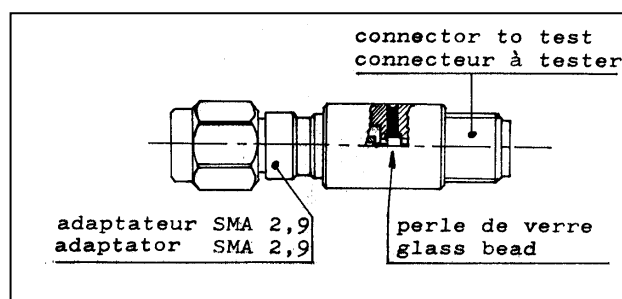
Series : SMA2.9



Typical return loss of a connector pair with two glass beads joined by 1 inch microstrip



Insertion loss measurements in coaxial circuit with glass bead



Issue : 1018 C

In the effort to improve our products, we reserve the right to make changes judged to be necessary.



# Mouser Electronics

Authorized Distributor

Click to View Pricing, Inventory, Delivery & Lifecycle Information:

Radial:

[R127601001](#)