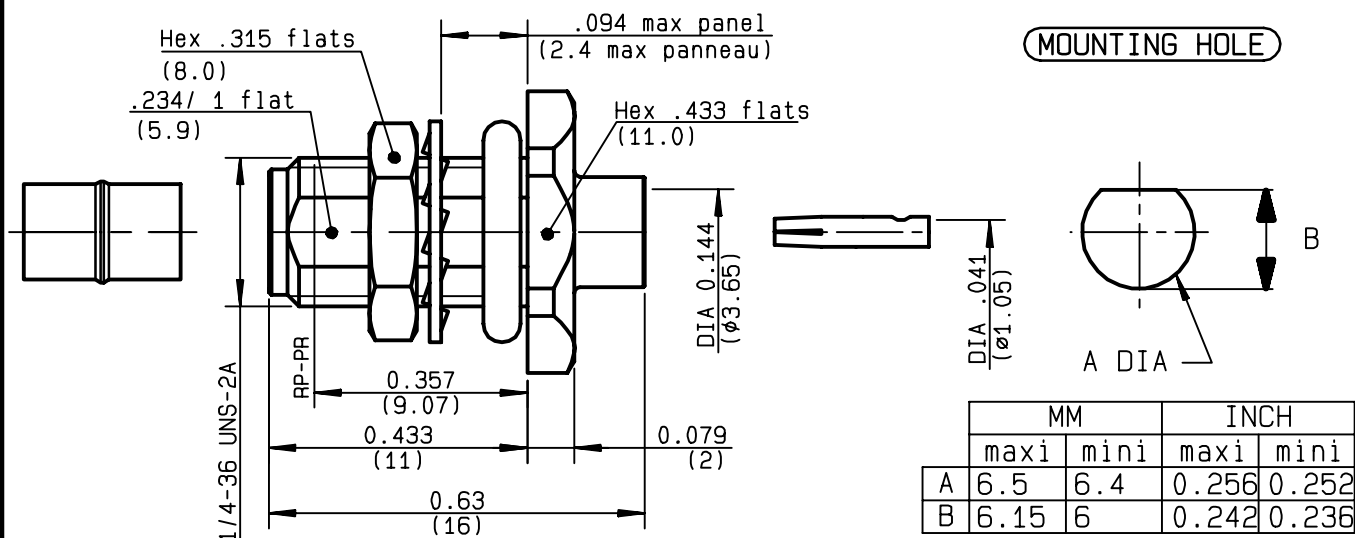


STRAIGHT BULKHEAD JACK PANEL SEAL
SOLDER TYPE - CABLE .141
R124.325.003
SERIES SMA-COM


NOMINAL IMPEDANCE	50	Ω
FREQUENCY RANGE	0-18	GHz
TEMPERATURE RATING	-65/+105	$^{\circ}\text{C}$
V.S.W.R	1.05 + .01 x F(GHz)Maxi	
RF INSERTION LOSS	0.05 \sqrt{F} (GHz) dB Maxi	
VOLTAGE RATING	500	Veff Maxi
DIELECTRIC WITHSTANDING VOLTAGE	1000	Veff Mini
INSULATION RESISTANCE	5000	M Ω Mini
HERMETIC SEAL	NA	Atm.cm ³ /s
LEAKAGE (pressurized only)	NA	
MECHANICAL DURABILITY	100	Cycles
WEIGHT	3.6	gr
SPECIFICATION		

 CABLES : **KS 2**
RG 402

OTHERS CHARACTERISTICS

CABLE RETENTION	270	N Mini
CENTER CONTACT RETENTION		
Axial force - mating end	NA	N Mini
Axial force - opposite end	NA	N Mini
Torque	NA	cm.N Mini
RECOMMENDED TORQUES		
Mating	NA	cm.N
Panel nut	150	cm.N
Clamp nut	NA	cm.N

CONNECTOR PARTS MATERIALS

BODY	BRASS
OUTER CONTACT	
CENTER CONTACT	BERYLLIUM COPPER
INSULATOR	PTFE
GASKET	SILICONE RUBBER
OTHERS PIECES	BRASS

FINISH (all values are given in micrometers)

GOLD 0.2 OVER NICKEL 2
GOLD 1.3 OVER COPPER 2.5
-
-
GOLD 0.2 OVER NICKEL 2

PERRIN

ISSUE	CREATION DATE	FILE PART-NUMBER
9847C00	23/09/1996	96-1200-090

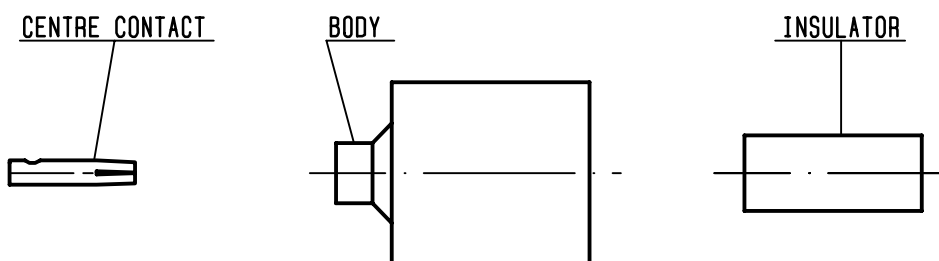

RADIALL®

 The information given here is subject to change without notice.
 Design changes may be in order to improve the product .

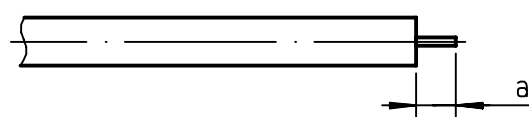
Connect to the future

**R124.325.003**ISSUE **9847C00** SERIES

SMA-COM

**①**

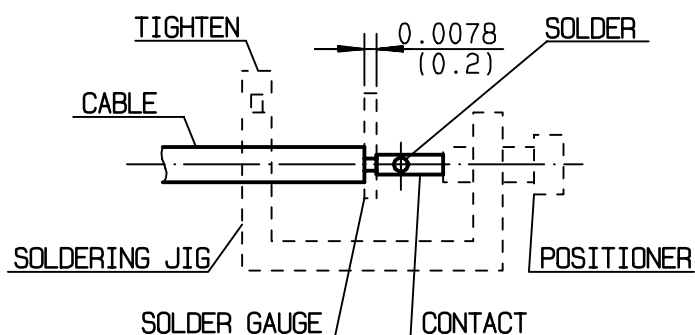
Take the tool kit : R282.120.000
Strip the dielectric of the cable .
Stripping tool cable : R282.053.000
Trimmer : R282.067.000
Clean the cable .
-



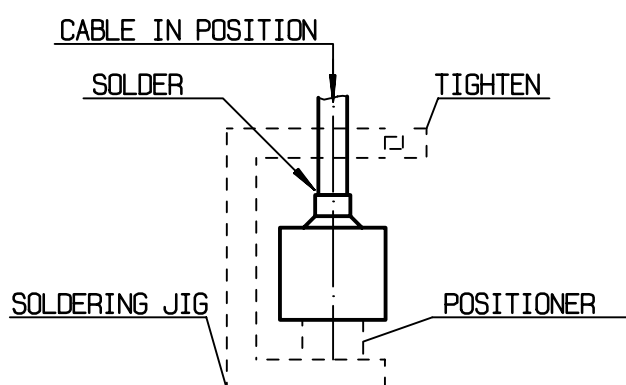
Stripping	a	b	c	d	e
inch	0.125	0	0	0	0
mm	3.17				

②

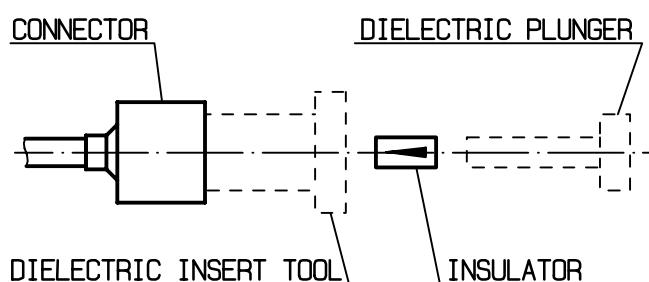
Screw the positioner R282.744.220 onto the soldering jig R282.740.000
Slide contact into positioner .
Insert solder gauge R282.862.060 between contact and cable .
Tighten and solder the contact .

**③**

After cooling remove cable assembly from the jig .
Screw positioner R282.744.011 into the connector .
Slide cable into the connector until it bottoms againsts positioner R282.744.011 .
Tighten .
Put 3 rings of solder around the cable and solder .

**④**

After cooling remove cable assembly from the jig .
Screw positioner cut R282.914.010
Cut the dielectric flush to clamp braid sleeve with tool R282.915.010.
Screw female dielectric insert tool onto connector and insert insulator with the dielectric plunger R282.730.043



Mouser Electronics

Authorized Distributor

Click to View Pricing, Inventory, Delivery & Lifecycle Information:

Radial:

[R124325003](#)