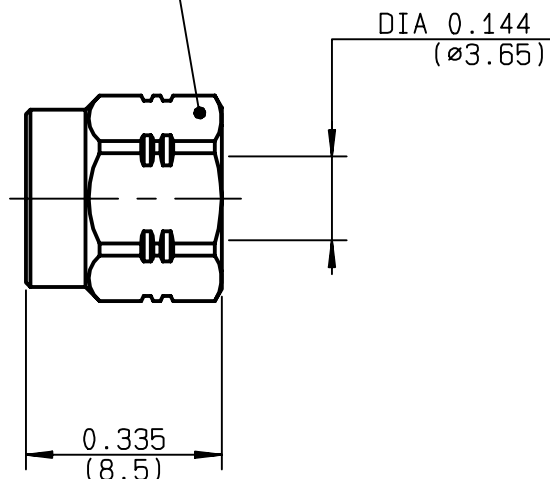


**STRAIGHT PLUG SOLDER TYPE**  
**CABLE .141**
**R124.054.003**  
**SERIES SMA-COM**

 Hex .315/flats  
 (hex. 8/Plats)


NOMINAL IMPEDANCE	<b>50</b> $\Omega$
FREQUENCY RANGE	<b>0-18</b> GHz
TEMPERATURE RATING	<b>-65/+105</b> °C
V.S.W.R	<b>1.05</b> + <b>.01</b> x F(GHz)Maxi
RF INSERTION LOSS	<b>0.05</b> $\sqrt{F}$ (GHz) dB Maxi
VOLTAGE RATING	<b>500</b> Veff Maxi
DIELECTRIC WITHSTANDING VOLTAGE	<b>1000</b> Veff Mini
INSULATION RESISTANCE	<b>5000</b> M $\Omega$ Mini
HERMETIC SEAL	<b>NA</b> Atm.cm <sup>3</sup> /s
LEAKAGE (pressurized only)	<b>NA</b>
MECHANICAL DURABILITY	<b>100</b> Cycles
WEIGHT	<b>2.1</b> gr
SPECIFICATION	

 CABLES : **KS 2**  
**RG 402**

## OTHERS CHARACTERISTICS

CABLE RETENTION	<b>270</b> N Mini
CENTER CONTACT RETENTION	
Axial force - mating end	<b>NA</b> N Mini
Axial force - opposite end	<b>NA</b> N Mini
Torque	<b>NA</b> cm.N Mini
RECOMMENDED TORQUES	
Mating	<b>60</b> cm.N
Panel nut	<b>NA</b> cm.N
Clamp nut	<b>NA</b> cm.N

CONNECTOR PARTS	MATERIALS	FINISH (all values are given in micrometers)
BODY	BRASS	GOLD 0.2 OVER NICKEL 2
OUTER CONTACT		
CENTER CONTACT		
INSULATOR		-
GASKET	SILICONE RUBBER	-
OTHERS PIECES	BRASS	GOLD 0.2 OVER NICKEL 2

TRIQUES

ISSUE	CREATION DATE	FILE PART-NUMBER
<b>9847A01</b>	<b>17/07/1996</b>	<b>96-1200-066</b>


**RADIALL®**

 The information given here is subject to change without notice.  
 Design changes may be in order to improve the product .

*Connect to the future*

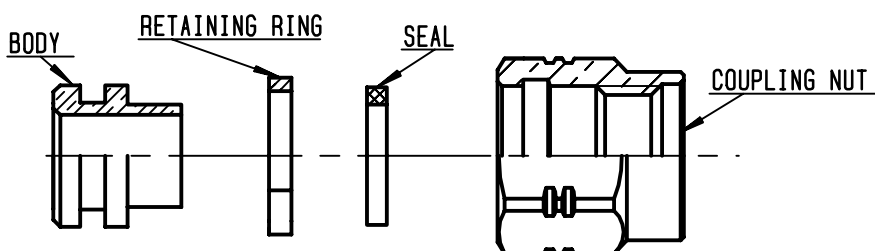


**R124.054.003**

ISSUE 9847A01

SERIES

SMA-COM



we recommend a cable thermal preconditionning before assembling

①

Place the cable into the assembly jig (R282.740.000)

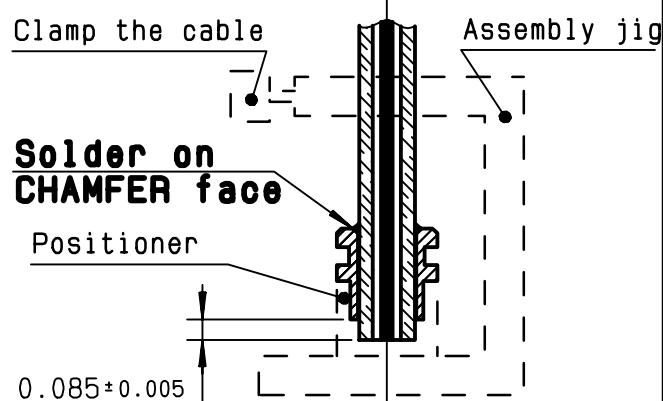
Place the connector body and positioner (R282.744.100) onto the cable and clamp cable.

Put 3 rings of solder around the cable.

Solder the body onto the cable.

-

-



②

Immobilize the cable using the thumb crew on the cable holder (R282.059.100).

Get the positioner into the connector groove, using knurled push-button.

Push button until it stops.

Tighten cable.

Present the stripping tool (R282.053.100) opposite the cable holder.

Push and turn both elements with respect to each other.

When the tool stop cutting : pull off without turning it.

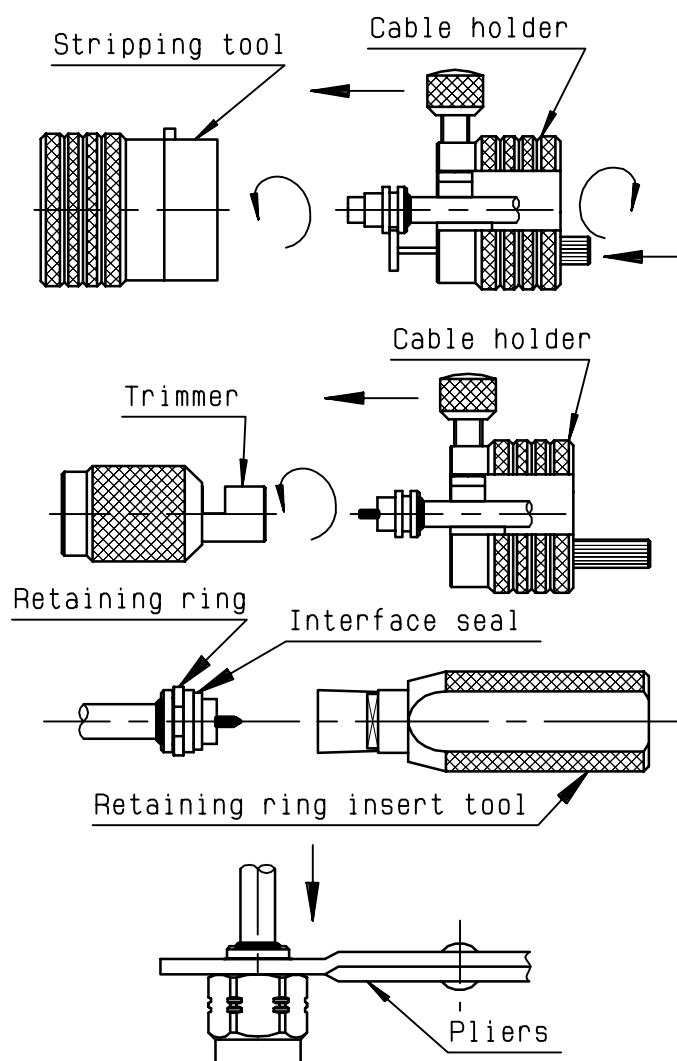
Present the trimmer (R282.066.100) opposite the cable holder, push and turn both elements with respect to each other until fully home.

Place retaining ring onto its insert tool (R282.760.000).

Push sub-assembly into the tool until the retaining ring snaps into place.

Place the interface seal O ring onto body.

Compress retaining ring using retaining ring pliers. Push coupling nut onto sub-assembly and over retaining ring.



# Mouser Electronics

Authorized Distributor

Click to View Pricing, Inventory, Delivery & Lifecycle Information:

Radial:

[R124054003](#)