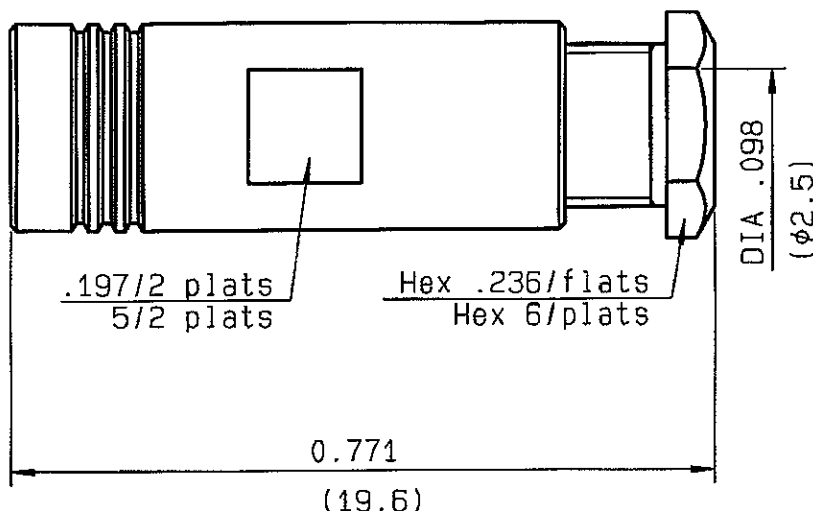


STRAIGHT PLUG CLAMP TYPE
CABLE 2/50 D
R114.003.420
SERIES
SMB


| | | |
|---------------------------------|-----------------------------|------------------------|
| NOMINAL IMPEDANCE | 50 | Ω |
| FREQUENCY RANGE | 0-4 | GHz |
| TEMPERATURE RATING | -65/+165 | $^{\circ}\text{C}$ |
| V.S.W.R | 1.30 + .04 x F(GHz)Maxi | |
| RF INSERTION LOSS | 0.25 $\sqrt{F(\text{GHz})}$ | dB Maxi |
| VOLTAGE RATING | 250 | Veff Maxi |
| DIELECTRIC WITHSTANDING VOLTAGE | 750 | Veff Mini |
| INSULATION RESISTANCE | 1000 | M Ω Mini |
| HERMETIC SEAL | NA | Atm.cm ³ /s |
| LEAKAGE (pressurized only) | NA | |
| MECHANICAL DURABILITY | 500 | Cycles |
| WEIGHT | | gr |
| SPECIFICATION | | |

CABLES : TS 2619
PACKAGING

| Standard | Unit | Other |
|----------|------------|------------|
| 100 | 'W' option | Contact us |

OTHERS CHARACTERISTICS

| | |
|----------------------------|--------------|
| | R-A-S |
| CABLE RETENTION | 58 N Mini |
| CENTER CONTACT RETENTION | |
| Axial force - mating end | 10 N Mini |
| Axial force - opposite end | 10 N Mini |
| Torque | NA cm.N Mini |
| RECOMMENDED TORQUES | |
| Mating | NA cm.N |
| Panel nut | NA cm.N |
| Clamp nut | 40 cm.N |

CONNECTOR PARTS : MATERIALS

| | |
|----------------|------------------|
| BODY | BRASS |
| OUTER CONTACT | BERYLLIUM COPPER |
| CENTER CONTACT | BERYLLIUM COPPER |
| INSULATOR | PTFE |
| GASKET | |
| OTHERS PIECES | BRASS |

FINISH

(all values are given in micrometers)

| |
|------------------------|
| GOLD 0.2 OVER NICKEL 2 |
| GOLD 0.5 OVER NICKEL 2 |
| GOLD 1.3 OVER NICKEL 2 |
| - |
| - |
| GOLD 0.2 OVER NICKEL 2 |

TRIPIER

| | | |
|---------------|-------------------|--------------------|
| ISSUE | CREATION DATE | FILE PART-NUMBER |
| 0701 E | 20/05/1992 | 91-0019-003 |


RADIALL®

 The information given here is subject to change without notice.
 Design changes may be in order to improve the product.

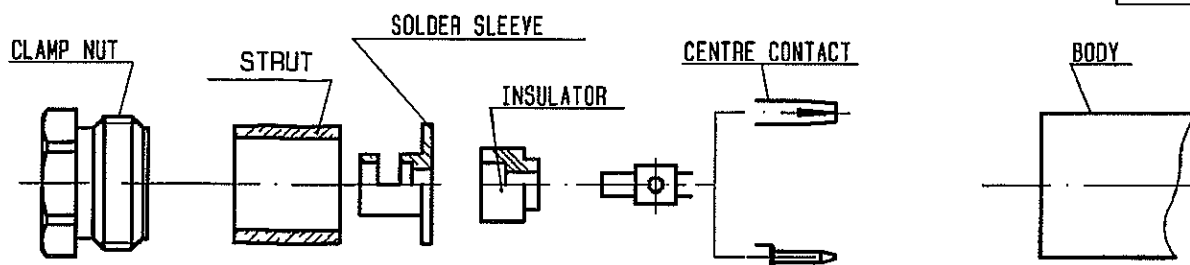
Connect to the future



RADIAL[®]

R114,003,420

| | | |
|-------|--------|--------|
| ISSUE | 0701 E | SERIES |
| | | SMB |

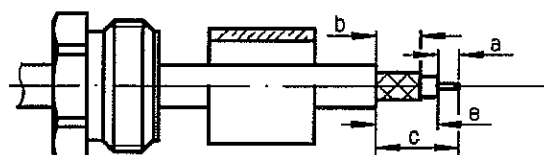


1

Slide the clamp nut ,the strut onto the cable

Strip the cable .

Dip tinned centre conductor of cable .

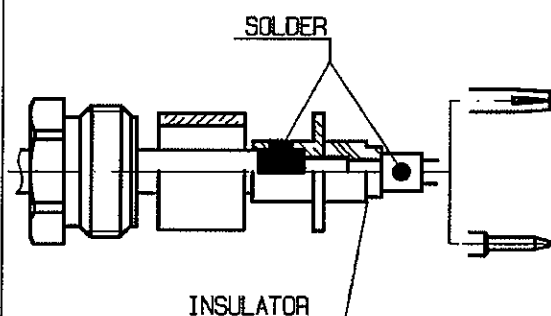
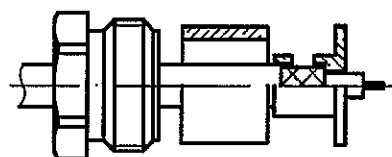


| Stripping | a | b | c | d | e |
|-----------|-------|-------|-------|---|-------|
| inch | 0.059 | 0.118 | 0.307 | 0 | 0.248 |
| mm | 1.5 | 3 | 7.8 | | 6.3 |

2

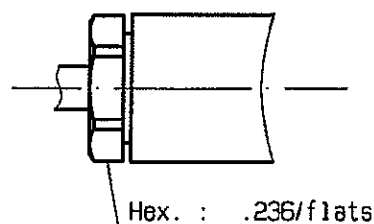
Solder the solder sleeve onto the braid .
Slide the insulator until it bottoms
against the solder sleeve .

Solder the centre contact until it bottoms against insulator .



3

Screw sub-assembly into the connector body .
(recommended coupling torque 3.53 in.lb)
Ref. wrench .236/flats : A282 318 000
Ref. wrench .250/flats : A282 319 010



Hex. : .236/flats

Mouser Electronics

Authorized Distributor

Click to View Pricing, Inventory, Delivery & Lifecycle Information:

Radial:

[R114003420W](#)